

## Product datasheet for **RR215433**

### **Nrg1 (NM\_031588) Rat Tagged ORF Clone**

#### **Product data:**

Product Type:	Expression Plasmids
Product Name:	Nrg1 (NM_031588) Rat Tagged ORF Clone
Tag:	Myc-DDK
Symbol:	Nrg1
Mammalian Cell Selection:	Neomycin
Vector:	pCMV6-Entry (PS100001)
E. coli Selection:	Kanamycin (25 ug/mL)



[View online »](#)

ORF Nucleotide  
Sequence:

>RR215433 representing NM\_031588  
Red=Cloning site Blue=ORF Green=Tags(s)

TTTTGTAATACGACTCACTATAGGGCGGCCGGGAATTCGTGACTGGATCCGGTACCGAGGAGATCTGCC  
GCC**CGGATCGCC**

ATGTCTGAGCGCAAAGAAGGCAGAGGCAAGGGGAAGGCAAGAAGAAGGACCGGGGATCCCGCGGGAAGC  
CCGGGCCCGCGAGGGCGACCCGAGCCAGCACTGCCTCCAGATTGAAAGAAATGAAGAGCCAGGAGTC  
AGCTGCAGGCTCCAAGCTAGTGCTCCGGTGCGAAACCAGCTCCGAGTACTCCTCACTCAGATTCAAATGG  
TTCAAGAATGGGAACGAGCTGAACCGAAAAATAAACAGAAAACATCAAGATACAGAAGAAGCCAGGGA  
AGTCAGAGCTTGAATTAACAAAGCATCCCTGGCTGACTCTGGAGAGTATATGTGCAAAGTGATCAGCAA  
GTTAGGAAATGACAGTGCCTCTGCCAACATCACCATTGTTGAGTCAAACGAGTTCATCACTGGCATGCCA  
GCCTCGACTGAGACAGCCTATGTGCTCAGAGTCTCCATTAGAATCTCAGTTTCAACAGAAGGCGCAA  
ACACTTCTTCATCCACATCGACATCCACGACTGGGACCAGCCATCTCATAAAGTGCAGGAGGAGAA  
AACTTTCTGTGTGAATGGGGCGAGTGCTTCACGGTGAAGGACCTGTCAAACCCGTAAGATACTTGTGC  
AAGTGCCCAAATGAGTTTACTGGTGATCGTTGCCAAAACCTACGTAATGGCCAGCTTCTACAAAGCGGAGG  
AACTCTACCAGAAGAGGGTGTGACAATTACTGGCATCTGTATCGCCCTGCTGGTGGTCCGCATCATGTG  
TGTGGTGGCTACTGAAAACCAAGAAGCAGCGGCAGAAGCTTCATGATCGGCTTCGGCAGAGTCTTCGG  
TCAGAACGGAGCAACCTGGTGAACATAGCGAATGGGCCTCACCACCCAAACCCACCGCCAGAGAAGCTGC  
AGCTGGTGAATCAATACGTATCTAAAAACGTCTCCTCAGTGAGCATATTGTTGAGAGAGAAGTGGAGAC  
TTCCTTTTCCACAGTCAATACACTTCCACAGCCCATCACTCCACGACTGTCACCCAGACTCCTAGTCAC  
AGCTGGAGTAATGGGCACACGGAGAGCATATTTTCAGAAAGCAACTCCGTAATCATGATGTCTTCGGTAG  
AGAACAGCAGGCACAGCAGTCCCAGGAGGAGGAGGAGGAGGAGGAGGAGGAGGAGGAGGAGGAGGAGGAG  
TAACAGCTTCTCAGGCATGCCAGAGAAACCCCTGACTCCTACAGAGACTCTCCTCATAGCGAAAGGTAT  
GTATCAGCCATGACCACCCGGCTCGTATGTACCTGTAGATTTCCACACGCCAAGCTCCCTAAATCGC  
CCCCTTCGAAATGTCTCACCCGTGTCCAGCATGACGGTGTCAATGCCCTCTGTGGCAGTCAGCCCTT  
TGTGGAAGAAGAGAGGCCTCTGTGCTTGTGACGCCACCAAGGCTACGGGAGAAGAAATATGATCATCAC  
CCCCAGCAACTCAACTCCTTTCATCACAACCCTGCACATCAGAGTACCAGCCTCCCCCTAGCCACTGA  
GGATAGTGGAGGATGAGGAGTACGAGACGACCCAGGAGTATGAGTCAGTTCAAGAGCCCCTTAAGAAAGT  
CACCAATAGCCGGCGGGCCAAAAGAACCAAGCCAATGGCCACATTGCCAATAGGTTGAAATGGACAGC  
AACACAAGTTCTGTGAGCAGTAACCTCAGAAAGTGAGACAGAAGACGAAAGAGTAGGTGAAGACACCCAT  
TCTGGGCATACAGAACCCCTGGCAGCCAGCCTTGAGGTGGCCCTGCCTTCCGTCTGGCTGAGAGCAG  
GACTAACCAGCAGGCCGCTTCTCCACACAGGAGGAATTACAGGCCAGGCTGTCTAGTGTAAATCGCTAAC  
CAAGACCTATTGCTGTA

**ACGCGT**ACGCGGCCGCTCGAGCAGAAACTCATCTCAGAAGAGGATCTGGCAGCAAATGATATCCTGGATT  
ACAAGGATGACGACGATAAGGTTTAA

**Protein Sequence:** >RR215433 representing NM\_031588  
Red=Cloning site Green=Tags(s)

MSEKKEGRGKGGKGGKDRGSRGKPGPAEGDPSPALPPRLKEMKSQESAAGSKLVLCETSSEYSSLRFKW  
 FKNGNELNRKNPENIKIQKPGKSELRINKASLADSGEYMCKVISKLGNDASANITIVESNEFITGMP  
 ASTETAYVSSSEPIRISVSTEGANTSSSTSTSTGTSHLIKCAEKEKTCVNGGECFTVKDLSNPSRYLC  
 KCPNEFTGDRQNYVMASFYKAEELYQKRVLITIGICIALLVGIMCVVAYCKTKKQKQLHDLRQSLR  
 SERSNLVNIANGPHHPNPPENVQLVNQYVSKNVISSEHIVEREVETSFSTSHYTSTAHHSTTVTQTPSH  
 SWSNGHTESIISESNSVIMSSVENSRRHSPAGGPRGRLHGLGGPRDNSFLRHARETPDSYRDSPHSERY  
 VSAMTTPARMSPVDFHTPSSPKSPPSEMSPVSSMTVSMPSVAVSPFVEEERPLLLVTPPRLREKDYHH  
 PQLNSFHHPAHQSTSLPPSPLRIVEDEEYETTQEYESVQEPVKVNTNSRRAKRTKPNGHIANRLEMDS  
 NTSSVSSNSESETEDERVGEDTPFLGIQNPLAASLEVAPAFRLAESRTNPAGRFSTQEELQARLSSVIAN  
 QDPIAV

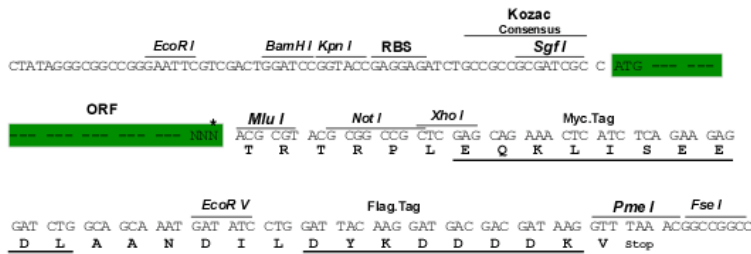
TRTRPLEQKLISEEDLAANDILDYKDDDDKV

**Chromatograms:** [https://cdn.origene.com/chromatograms/ja2607\\_b05.zip](https://cdn.origene.com/chromatograms/ja2607_b05.zip)

**Restriction Sites:** SgfI-MluI

**Cloning Scheme:**

Cloning sites used for ORF Shuttling:



\* The last codon before the Stop codon of the ORF

**ACCN:** NM\_031588

**ORF Size:** 1908 bp

**OTI Disclaimer:** Due to the inherent nature of this plasmid, standard methods to replicate additional amounts of DNA in E. coli are highly likely to result in mutations and/or rearrangements. Therefore, OriGene does not guarantee the capability to replicate this plasmid DNA. Additional amounts of DNA can be purchased from OriGene with batch-specific, full-sequence verification at a reduced cost. Please contact our customer care team at [custsupport@origene.com](mailto:custsupport@origene.com) or by calling 301.340.3188 option 3 for pricing and delivery.

The molecular sequence of this clone aligns with the gene accession number as a point of reference only. However, individual transcript sequences of the same gene can differ through naturally occurring variations (e.g. polymorphisms), each with its own valid existence. This clone is substantially in agreement with the reference, but a complete review of all prevailing variants is recommended prior to use. [More info](#)

**OTI Annotation:** This clone was engineered to express the complete ORF with an expression tag. Expression varies depending on the nature of the gene.

**Components:** The ORF clone is ion-exchange column purified and shipped in a 2D barcoded Matrix tube containing 10ug of transfection-ready, dried plasmid DNA (reconstitute with 100 ul of water).

**Reconstitution Method:**

1. Centrifuge at 5,000xg for 5min.
2. Carefully open the tube and add 100ul of sterile water to dissolve the DNA.
3. Close the tube and incubate for 10 minutes at room temperature.
4. Briefly vortex the tube and then do a quick spin (less than 5000xg) to concentrate the liquid at the bottom.
5. Store the suspended plasmid at -20°C. The DNA is stable for at least one year from date of shipping when stored at -20°C.

**RefSeq:** [NM\\_031588.2](#), [NP\\_113776.2](#)

**RefSeq Size:** 3272 bp

**RefSeq ORF:** 1911 bp

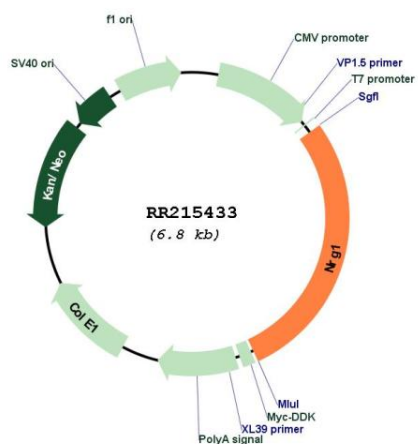
**Locus ID:** 112400

**Cytogenetics:** 16q12.3

**MW:** 70.6 kDa

**Gene Summary:** ligand for Erbb3 and Erbb4 receptors; gene produces many different alternative splicing isoforms; involved in neural and organ development [RGD, Feb 2006]

Product images:



Circular map for RR215433