

Product datasheet for **RR215400**

SytI5 (NM_178333) Rat Tagged ORF Clone

Product data:

Product Type:	Expression Plasmids
Product Name:	SytI5 (NM_178333) Rat Tagged ORF Clone
Tag:	Myc-DDK
Symbol:	SytI5
Mammalian Cell Selection:	Neomycin
Vector:	pCMV6-Entry (PS100001)
E. coli Selection:	Kanamycin (25 ug/mL)



[View online »](#)

ORF Nucleotide
Sequence:

>RR215400 representing NM_178333
 Red=Cloning site Blue=ORF Green=Tags(s)

TTTTGTAATACGACTCACTATAGGGCGGCCGGGAATTCGTCGACTGGATCCGGTACCGAGGAGATCTGCC
 GCC**CGGATCGCC**

ATGTCTAAGAACTCGGAGTTCATCAATCTGTCATTTTTATTGGATCATGAGAAGGAAATGATCCTCGGAG
 TCCTAAAGAGAGATGAATATTTGAAAAAGGTGGAAGACAAGAGGATAAGGAAGCTGAAAAATGAGCTTTT
 AGAAGCCAAGCGTAGGAGTGGGAAGACTCACCAAGAGGCGAATAGAGTCTGTGTTCACTGTCAGAAAAGC
 CTGGGCCCTCATCTTTGACCGGGGAGCTCCATGCCAAGCCTGTTCACTCAGAGTGTGCAGTGTGCGAG
 TCACGGGACTTGATGGCAGCTGGAAGTGCAGTGTCTGTGCTAAAGTCGCGCAGCTAAGGATCATAAGTGG
 AGAATGGTTCTTGAAGAAAAGGCAAAGCGTTTCAAACAAGTCAATGTTCTGGGCACTGATGTTGTTGCGA
 CAGTCCATCTTAAGAAGAAGTCCAGGGTCTGAAGAAATACAAAACCAAGAGCAAGCACACCAAGGTGCAG
 ACAAGTCAGATACTTTGTCTTCAGTCAGGCAGAAGGCCACTCATGATGGACCAAAGAGGAAGGGTTTTCT
 TCTTAGCAAGTTCAGATCAGCAACCAGAGGAGAAATCAAACTCCAAAAGCTGAAAGTGGAAGGAGCTAT
 AGCTTGGACCTAGACAATCAAAATCTTCAGAGTTTCAAGTCGGTCTCTGGCTCAGACAGGGGAAGTACCA
 CTTTCATCAGATCTCACTGACCAGGAGGCTGGACGAGGAGCACAAAAGGCAGCTGCAGCAATGGTGGAAAT
 CCCGGTACTCAGAGGTCACCAGCCCCAAGTGCTCGTAGTGTGACCTCCATCAGCAGCAGAGAACATGGT
 TTTGAAAATCCATGGCTTTGGTACCATTGAAAGCATCTCTGAGGAACTCACAAAGAGTCATCGCAGGA
 ACACGCTGGTACACCTCCATAGCAGTGTCTGGTACCTCGTGTCTCAGAGCGGAGTCGATCTGAGTT
 AGATTTGAGTGTGATCATTGTCAGAAGACTTAGAGGACACTTCAAGCATAAGAAGCAGATCTGTTCTGGG
 GCTTTAGACAAAAGACTTGAATTCCTTAGAAGACACAGAAGATGGTGTGGACTTAGTGTCTCCAGGTTTT
 CTGCAAAATACCCACAGTCTGGCAAGTGGCCTGTCAACTAGCTCCCAAGCAGGATCTGATAGGAAGAGGAG
 CTACCTACATGTGCCTGATGCTGACTCAGACACTACTAGCCTAACAGCATGATGAGTGTTCACAGTGAA
 ACGGGAGACTATGGCAATGTGAAAGTACCCGGTGAGATTCTTCTCCACATCAGCTACTGCTACAAAAGT
 GCGGGCTATACATTTTTGTCAAGAACTGCAGAAACCTGGCCATCGGAGATGAAAAGAAAACAGAGGACAGA
 TGCTTATGTCAAGTCATACCTTCTTCCAGACAAGACCCGAAACAATAAGCGAAAAGACAAAATCAGGACA
 GGTACCAATCCAGAATCAATGAAACATTAAGTATACTATCAGCCACACCCAGCTGGAACAAGAAGTCT
 TGCAGCTCTCAGTCTGGCACTACGATCGGTTTGGACGCAACAGTTTCTGGGAGAGGTGGAGATTGCTTT
 TGACTCATGGAACCTCGAAAATCCATGTGATGAATGGTTTGTGCTTACGCCAAGGTGGAGTTGGCTCCT
 GATATTAGCCTTCAATATAAAGGAGAGTAACCATTGTTTTGCGTTATATTCCTCCAGAGGAGAACCTTA
 TATTTCCAGTAGAACACCTCAAGGAAAGAAGATCTTTAAAAAGGGAAAGAAGAAAGAGTCACCTGCCAT
 TTCTGGGGGAATACTTGAAGTTTTTCATCAAGAAGCAAAGAATCTGACAGCAGTAAAAGCAGGGGGCACT
 TCTGACAGCTTCGTCAAGGGCTACCTGCTTCTGTGATGATAACAAAGCCACCAAGCACAAAAGTGCAGTTG
 TAAAAAGAGTGTCAATCCTCAGTGGAAACCATGTGTTCAATTCAGCGGTCTGTATCCTCAGGATATACA
 GAATGCTTGCCTAGAAGTCAACCTCAGTGGGATAAGGAGGCCTTTCCAGCAACATCTTTCTAGGAGGTGTT
 CGTTTAAATCCGGAAGCGGTATTAGCCATGGGAAGGCTGTGGACTGGATGGACTCTCGTGGGGAAGAAC
 AACGCCTTTGGCAAAAGATGGCTGACAACCTGGGACATCTGTAGAAGGAGTTCTCATGCTACGTTCTAG
 CATGGCGAAATGTAGGCTC

ACGCGTACGCGGCCGCTCGAGCAGAAACTCATCTCAGAAGAGGATCTGGCAGCAAATGATATCCTGGATT
 ACAAGGATGACGACGATAAGGTTTAA

Protein Sequence: >RR215400 representing NM_178333
 Red=Cloning site Green=Tags(s)

MSKNSEFINLSFLLDHEKEMILGVLKRDEYLKVKVEDKRIRKLNELLEAKRRSGKTHQEANRVCVHCQKS
 LGLIFDRGAPCQACSLRVCSECRVTGLDGSWKCTVCAKVAQLRIISGEWFLEEKAKRFKQVNVLGTDVVR
 QSILRRSPGSEEIQNQEQAHQGADKSDTLSSVRQKATHDGPKRKGFLLSKFRSATRGEIKTPKAESGRSY
 SLDLDNQNLQSFKSVSGSDRGSTTSSDLTDQEAGRGAPKGSCSNGGIPVTQRSPAPSARSVTSISSREHG
 FENSMALATIESISEELTKSHRRNTSGTPSIAVSGTSLSSERSRSELDLSEFAEDLEDTSSIRRSVPG
 ALDKDLNSLEDTEDGVDLVSSRFSANTHSLASGLSTSSQAGSDRKRSYLHVPDADSDTTSLNSMMSVYSE
 TGDYGNVKVTGEILLHISYCYKTGGYIFVKNCRNLAIGDEKKQRTDAYVKSYPKTRNNKRKTKIRT
 GTNPEFNETLKYTISHTQLETRTLQLSVWHYDRFGRNSFLGEVEIAFDSWNFENPCDEWFLQPKVELAP
 DISLQYKGETIVLRYIPPEENLIFPVEQPQGGKIFKKGKKKESPAISGGILEVFIKEAKNLAVKAGGT
 SDSFVKGYLLPDDNKATKHTAVVKKSNPQWNHVFIFSGLYPQDIQNACLELTIDWKEAFSSNIFLGGV
 RLNSGSGISHGKAVDWMDSRGEEQRLWQKMDNPGTSSVEGVLMLRSSMAKCRLL

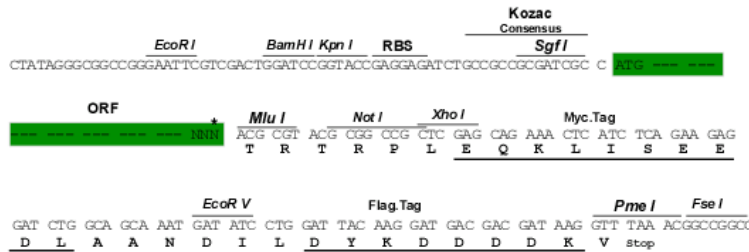
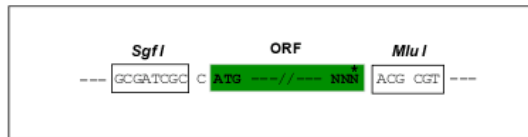
TRTRPLEQKLISEEDLAANDILDYKDDDDKV

Restriction Sites:

SgfI-MluI

Cloning Scheme:

Cloning sites used for ORF Shuttling:



* The last codon before the Stop codon of the ORF

ACCN: NM_178333

ORF Size: 2259 bp

OTI Disclaimer: The molecular sequence of this clone aligns with the gene accession number as a point of reference only. However, individual transcript sequences of the same gene can differ through naturally occurring variations (e.g. polymorphisms), each with its own valid existence. This clone is substantially in agreement with the reference, but a complete review of all prevailing variants is recommended prior to use. [More info](#)

OTI Annotation: This clone was engineered to express the complete ORF with an expression tag. Expression varies depending on the nature of the gene.

Components: The ORF clone is ion-exchange column purified and shipped in a 2D barcoded Matrix tube containing 10ug of transfection-ready, dried plasmid DNA (reconstitute with 100 ul of water).

Reconstitution Method:

1. Centrifuge at 5,000xg for 5min.
2. Carefully open the tube and add 100ul of sterile water to dissolve the DNA.
3. Close the tube and incubate for 10 minutes at room temperature.
4. Briefly vortex the tube and then do a quick spin (less than 5000xg) to concentrate the liquid at the bottom.
5. Store the suspended plasmid at -20°C. The DNA is stable for at least one year from date of shipping when stored at -20°C.

RefSeq: [NM_178333.1](#), [NP_848016.1](#)

RefSeq Size: 2262 bp

RefSeq ORF: 2262 bp

Locus ID: 302538

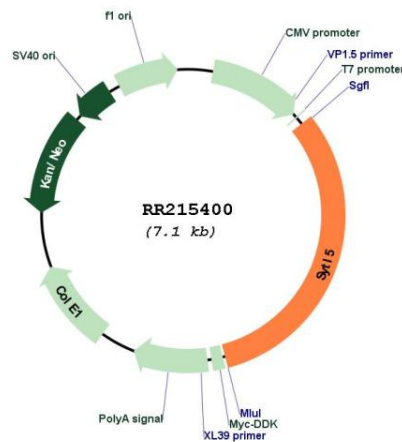
UniProt ID: [Q812E4](#)

Cytogenetics: Xq12

MW: 83.6 kDa

Gene Summary: human homolog binds specifically to the GTP-bound form of Rab27A, binding occurs via the Slp homology domain SHD; may play a role in membrane trafficking [RGD, Feb 2006]

Product images:



Circular map for RR215400