

Product datasheet for **RR215359**

Mrc2 (NM_001024687) Rat Tagged ORF Clone

Product data:

Product Type: Expression Plasmids
Product Name: Mrc2 (NM_001024687) Rat Tagged ORF Clone
Tag: Myc-DDK
Symbol: Mrc2
Synonyms: Endo180
Vector: pCMV6-Entry (PS100001)
E. coli Selection: Kanamycin (25 ug/mL)
Cell Selection: Neomycin
ORF Nucleotide Sequence: >RR215359 representing NM_001024687
Red=Cloning site Blue=ORF Green=Tags(s)

TTTTGTAATACGACTCACTATAGGGCGCCGGGAATTCGTCGACTGGATCCGGTACCGAGGAGATCTGCC
GCC**CGATCGCC**

ATGGGACCCATCCGACCTGCCCTGGCGCCCTGGCCTCGTCACCTGCTGCGCTGCGTCTTACTTCTCGGGG
GACTTCGTCTTGGCCACCCGGCAGACTCCGCCCGCCCTCCTGGAACCCGATGTCTTCTCATCTTCAG
CCAGGGGATGCAGGGCTGCCTGGAGGCCAGGGTGTGCAGTCCGAGTCATCCAGTCTGCAATGCCAGT
CTCCCTGCCAGCGCTGGAAGTGGTCTCCCGAACCGACTCTTCAACCTGGGGGCCATGCAGTGCCTGG
GTACCGGCTGGCCTGCCACCAACACCACAGTTTCCCTGGGCATGTATGAATGTGACCGAGAGGCCTTGAG
TCTTCGCTGGCAGTGTCTGACACTAGGGGACCAGTTGTCTCTGCTTCTGGGGCCCGTGCAACAATGCA
TCGAAGCCTGGTACCCTGGAGCGCGGCGACAGACCCGAGTGGCCATTGGAACATCTATGGCAGTGAAG
AAGACCTATGTGCTCGACCCTACTACGAGGTCTACACCATCCAGGGAACTCCACGGGAAGCCGTGTAC
TATCCCCTTCAAATACGACAACCAAGTGGTCCACGGCTGCACAGCAGCGGCGGGAAGATGGGCACCTG
TGGTGTGCCACCCAGGACTACGGCAAAGACGAGCGCTGGGGCTTCTGCCCATCAAGAGTAACGACT
GTGAGACATTCTGGACAAAGACCAGCTGACTGACAGCTGTTACCAGTTAACTTCCAATCCACACTGTC
CTGGAGGGAGGCCTGGCCAGCTGCGAGCAGCAGGGTGCAGACCTGTTGAGCATCACGGAGATCCACGAG
CAGACCTACATCAATGGACTCCTCACGGCTACAGCTCCACGCTGTGGATTGGCCTTAATGACTTGGACA
CCAGTGGAGGCTGGCAGTGGTCTGACAACCTCGCCCTCAAGTACCTCAACTGGGAGAGTGATCAGCCGGA
CAACCCAGGTGAGGAGAACTGTGGAGTGATCCGGACCGAGTCTCAGGTGGCTGGCAGAACCATGACTGC
AGCATCGCCCTGCCCTATGTCTGCAAGAAAAACCAACGCCACAGCCGAGCCATCCAGCCAGACAGGT
GGCCAATGTCAAGGTGGAGTGTGACCCAGCTGGCAGCCCTCCAGGGCCACTGCTACCGCTGCAGGC
GGAGAAGCGCAGCTGGCAGGAGTCCAAGAGGGCGTGCCTACGGGGCGGGGCGACCTCCTTAGCATCCAC
AGCATGACTGAGCTGGAGTTCATCACCACAGATCAAGCAAGAGGTGGAAGAGCTATGGATTGGCCTCA
ATGATTTGAAGCTGCAGATGAATTTTGTGAGTGGTCTGATGGGAGCCTCGTAGTTCACCCACTGGCACC
CTTTGAGCCCAACAATTCGGTGCAGCCTGGAAGACTGTGTACCATCTGGGGCCGGAAGGACGCTGG
AATGACAGTCCCTGTAACCAATCCTTGCCCTCCATCTGCAAGAAGGCAGGCCGACTGAGCCAGGGCACTG



CAGAGGAGGACCATGGCTGCCGGAAGGGTTGGACATGGCATAGCCCATCCTGCTACTGGCTGGGAGAGGA
CCAAGTGTACTACAGTGTGCCCGGCTGTGTACTGACCATGGCTCTCAGCTGGTCACCATCACCAAC
AGGTTTGAAGCAGGCCTTCGTGAGCAGCCTCATCTATAACTGGGAGGGCGAGTACTTCTGGACGGCCCTCC
AAGACCTCAACAGCACCGGCTCCTCCGTTGGCTCAGTGGGGATGAAGTCATGTATACCCATTGGAACCG
AGACCAGCCTGGGTACAGACGTGGGGCTGTGTGGCTTGGCCACGGGCAGTCCCATGGGACTGTGGGAG
GTGAAGAACTGCACGTCGTTCCGGGCTCGCTACATCTGCCGACAGAGCCTGGGCACACCAGTGACACCAG
AGTTGCCTGGCCAGACCCACACCCAGCCTACTGGCTCCTGTCCCCAGGGCTGGGTCTCAGACCCCAA
ACTCCGACACTGCTATAAGGTGTTTAGCTCAGAGCGGCTGCAGGAGAAGAAGAGTTGGATCGAGGCCCTC
GGGTTTTGCCGGGAGTTGGGGGCCAGCTGCTGAGTCTGGCCAGCTATGAGGAGGAACATTTTGTGGCCA
ACATGCTCAACAAGATCTTTGGTGTGAGTCAAGACCTGAGAACCATGAGCAGCACTGGTTTTGGATTGGCT
GAACCGCAGAGACCCTAGAGAGGGTACAGCTGGCGCTGGAGCGACGGTCTAGGGTTTTCTACCACAAT
TTTCCCGGAGCCAGCAGATGACGACAATATCCGAGGCTGTGCGGTGCTGGACCTGGCCTCCCTGCAGT
GGGTAGCCATGCAGTCCAGACACAACCTGACTGGATCTGCAAGATCCCTAGAGGTGTGGATGTGCGGGA
ACCAGACATTGGTCGGCAAGGCCGTCTGGAGTGGGTACGCTTTCAGGAGGCGGAGTACAAGTTTTTTGAG
CACCCTCCTCGTGGGCGCAGGCACAGCGCATCTGTACGTGGTCCAGGCAGAGCTGACCTCTGTTACA
GCCAGGCAAGAAGTGGACTTCTGGGGCAAATATGCAGAAGTTGCTCTCAGACCAGGAGCAGCACTGGTG
GATCGGCCTGCACACCTCAGAGAGCGACGGACGCTTCAGGTGGTCAGATGGTTCTGTTATAAACTTTGTC
TCTGGGCACCGGAAAACCTCGACCCATTGGCAAGGACAAGAAGTGTGTGTACATGACAGCTAGACAAG
AGGACTGGGGGACCAGAGGTGCCATACAGCCTTGCCTACATCTGTAACCGCAGCAATAGCTCTGGAGA
GACTCGGCCTCACGACCTGCCACCGTCAACCTAGGAGGCTGCCCTCCGGCTGGAACAGTTTCTCAAC
AAGTGTTCGGAATCCAGGGCCAGGACCCCAAGGACAGGGTGAATGGTCAGAGGCACAGTTCTCCTGTG
AACAGCAAGAAGCCAGCTGGTCAACATTGCAACCCCTTAGAGCAAGCGTACATCACGGCCAGCCTCCC
CAATGTGACCTTTGACCTCTGGATTGGCTGCATGGCTCTCAGAGGGACTTCCAGTGGATTGAGCAGGAA
CCTCTGCTCTATACCAATTGGGCACCAGGAGAGCCCTCTGGACCCAGCCCTGCTCCAGTGGCACCAAGC
CGACCAGCTGTGCGGTGATTCTGCACAGCCCTCAGCCACTTCACTGGCCGCTGGGATGATCGGAGCTG
CACAGAGGAGACGCACGGCTTCTCTGCCAGAAGGGCACAGACCCTCGTGAGCCCATCCCGGCAGCA
GCACTCCCTGCCCGAGCACCAGCTCTCCTACCTCAACCGCACCTTCCGGCTGCTGCAGAAGCCACTGC
GCTGGAAGATGCTCTCCTGCTGTGTGAGAGCCGGAATGCCAGCCTGGCACACGTGCCTGATCCCTACAC
CCAGGCCCTCCTTACGCAGGCTGCCCGGGGCTGCAAGCACCACTGTGGATCGGGCTGGCCAGTGAGGAG
GGCTCAAGGCGGTATTCCTGGCTCTCGGAGGAGCCTCTGAATTATGCGAGCTGGCAAGACGGGGAGCCCC
AGCACACAGGGGGCTGTGCCTATGTGGATGTGGATGGAACCTGGCGCACCCAGCTGTGACACCAAGCT
GCAGGGGCGAGTGTGTGGGTGAGCAGAGGGCCCTCCTCCAAGGATAAGCTACCGCGGACGCTGTCTC
CAGGGCCTGGCTGACTCGTCTGGATTCCCTTACGGGAGCACTGTACTCTTTCCACACGGAGCTGCTGC
TGGGCCACAAGGAGGCACTGCAGCGCTGCCAAAGAGCTGGTGGGACAGTTCTGTCCATTCTTGATGAGAT
GGAGAATGTGTTGTCTGGGAGCACCTGCAGACCCTGAAACCCAGAGTCGGGGTGCCTGGTTGGGCATG
AACTTCAATCCCAAAGGAGGCATGCTGGTCTGGCAAGACAATACAGCTGTGAACTATTCTAACTGGGGCC
CCCCTGGCCTGGGCCCTAGCATGCTAAGCCACAACAGCTGCTACTGGATCCAGAGCAGCAGCGGGCTGTG
GCGCCCCGGTGTGTACCAACGTCAACATGGGAGTTGTCTGCAAGCTCCCTAGAGTGGAGGAGAACGGC
TTCCTGCCATCAGCAGCGCTTCTGAGAACCCTGGTGGTGGTGGTGGTGGTGGTGGTGGTGGTGGTGGT
TCCCTCTGGCCTTGTGACAGGGGCCCTCATCCTCTACCGCGCCGACAGAGTGGGAGCGTGGGTCTTT
TGAGGGGGCTCGCTACAGTCGCAGCAGCGCTCTGGCCCGCAGAGGCCACCAGAGAACAATCCTGGTT
TCTGACATGGAATGAACGAACAACAAGAA

ACGCGTACGCGGCGGCTCGAGCAGAACTCATCTCAGAAGAGGATCTGGCAGCAATGATATCCTGGATT
ACAAGGATGACGACGATAAGGTTTAA

Protein Sequence: >RR215359 representing NM_001024687
 Red=Cloning site Green=Tags(s)

MGPIRPALAPWPRHLLRCVLLLGLRLGHPADSAAALLEPDVFLIFSQGMQGCLEAQGVQVRVIPVCNAS
 LPAQRWKWVSRNRLFNLGAMQCLGTGWPATNTTVSLGMYECDREALSLRWQCRTLGDQLSLLL GARANNA
 SKPGTLERGDQTRSGHWNIIYGSEEDLCARPYEVYTIQGNSHGKPCITPFKYDNQWFHGCTSTGREDGHL
 WCATTQDYGKDERWGFPCIKSNDCETFWDKQDLTDCYQFNFQSTLSWREAWASCEQQGADLLSITEIHE
 QTYINGLLTGYSSTLWIGLNDLDTSGGWQSDNSPLKYLNWE SDQPDNPGEEENCGVIRTESSGGWQNHDC
 SIALPYVCKKKPNATAEPIQPDRWANVKECDPSWQPFQGHYRLQAEKRSWQESKRACLRGGGDLLSIH
 SMTELEFITKQIKQEVEELWIGLNDLKLQMFESDGLVSFTHWHPFEPNFRDSEDCVTIWGPEGRW
 NDSPCNQSLPSICKKAGRLSQGTAEEDHGCRKGTWHSPSCYWLGEDQVIYSDARRLCDTHGSQLVITN
 RFEQAFVSSLIYNWEGEYFWTALQDLNSTGSRWL SGDEVMYTHWNRDQPGYRRGGCVALATGSAMGLE
 VKNCTSFARYICRQSLGTPVTPPELPGDPTPSLTGSCPQGWSDPKLRHCYKVFSSERLQEKKSWEIAL
 GVCRELGAQLSLASYEEHFVANMLNKIFGESEPENHEQHFWIGLNRDPREGHSWRWSDGLGF SYHN
 FARSQHDDDNIRGCAVLDLQWVAMQCQTQLDWICKIPRGVDVREPDIGRQGRLEWVRFQEA EYKFFE
 HHSSWAQAQRICTFWQAE LTVSVHSQAE LDFLGQNMQKLS SDQEQHWWIGLHTSESDGRFRWSDGSVIN
 FV SWAPGKPRPIGDKKCVYMTARQEDWGDQRCHTALPYICKRSNSSGETRPHDLPPSTLGGCPSGWNQFLN
 KCFRIQGGQDPQDRVKWSEAQFSC EQQEAQLVTIANPLEQAYITASL PNVTFDLWIGLHGSQRDFQWIEQ
 E PLLYTNWAPGEPSPAPSGTKPTSCAVILHSPSAHFTGRWDDRSCTEETHGFIQKGTDPSPSPAA
 ALPAPGTELSYLNRTFRLLQKPLRWKDALLLCESRNASLAHVDPYTAFLTQAARGLQAPLWIGLASEE
 GSRRYSWLSEEPLNYASWQDGE PQHTGGCAYVDVDTWRRTSCDTKLQGAVCGVSRGPPPPRISYRGSCP
 QGLADSSWIPFREHCYSFHTELLGHKEALQRCQ RAGGTVLSILDEMENVFVWEHLQTAETQSRGAWLGM
 NFNPKGGMLVWQDNTAVNYSNWGPPGLGPSMLSHNSCYWIQSSSGLWRPGACTNVTMGVVCKLPRVEENG
 FLPSAALPENPVALVVVLTAAVLLLLALLTGALILYRRRQSAERGSFEGARYSRSSRSGPAEATEKNILY
 SDMEMNEQQE

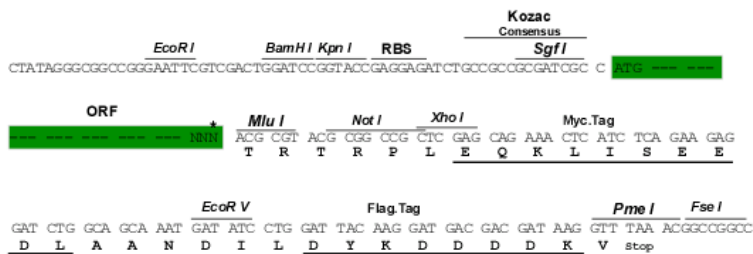
TRTRPLEQKLISEEDLAANDILDYKDDDDKV

Restriction Sites:

Sgfl-MluI

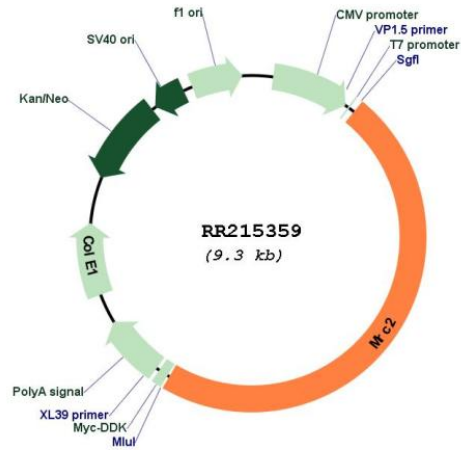
Cloning Scheme:

Cloning sites used for ORF Shuttling:



* The last codon before the Stop codon of the ORF

Plasmid Map:



ACCN: NM_001024687

ORF Size: 4440 bp

OTI Disclaimer: The molecular sequence of this clone aligns with the gene accession number as a point of reference only. However, individual transcript sequences of the same gene can differ through naturally occurring variations (e.g. polymorphisms), each with its own valid existence. This clone is substantially in agreement with the reference, but a complete review of all prevailing variants is recommended prior to use. [More info](#)

OTI Annotation: This clone was engineered to express the complete ORF with an expression tag. Expression varies depending on the nature of the gene.

Components: The ORF clone is ion-exchange column purified and shipped in a 2D barcoded Matrix tube containing 10ug of transfection-ready, dried plasmid DNA (reconstitute with 100 ul of water).

Reconstitution Method:

1. Centrifuge at 5,000xg for 5min.
2. Carefully open the tube and add 100ul of sterile water to dissolve the DNA.
3. Close the tube and incubate for 10 minutes at room temperature.
4. Briefly vortex the tube and then do a quick spin (less than 5000xg) to concentrate the liquid at the bottom.
5. Store the suspended plasmid at -20°C. The DNA is stable for at least one year from date of shipping when stored at -20°C.

RefSeq: [NM_001024687.1](#), [NP_001019858.1](#)

RefSeq Size: 4443 bp

RefSeq ORF: 4443 bp

Locus ID: 498011

UniProt ID: [Q4TU93](#)

Cytogenetics: 10q32.1

MW: 167 kDa

Gene Summary: May play a role as endocytotic lectin receptor displaying calcium-dependent lectin activity. Internalizes glycosylated ligands from the extracellular space for release in an endosomal compartment via clathrin-mediated endocytosis. May be involved in plasminogen activation system controlling the extracellular level of PLAUR/PLAU, and thus may regulate protease activity at the cell surface. May contribute to cellular uptake, remodeling and degradation of extracellular collagen matrices (By similarity). May participate in remodeling of extracellular matrix cooperating with the matrix metalloproteinases (MMPs) secreted by hepatic stellate cells. May mediate endocytosis of partially degraded collagens and glycoproteins produced in the extracellular matrix by MMPs.[UniProtKB/Swiss-Prot Function]