

## Product datasheet for **RR215317**

### Dapk1 (NM\_001107335) Rat Tagged ORF Clone

#### Product data:

**Product Type:** Expression Plasmids  
**Product Name:** Dapk1 (NM\_001107335) Rat Tagged ORF Clone  
**Tag:** Myc-DDK  
**Symbol:** Dapk1  
**Vector:** pCMV6-Entry (PS100001)  
**E. coli Selection:** Kanamycin (25 ug/mL)  
**Cell Selection:** Neomycin  
**ORF Nucleotide Sequence:** >RR215317 representing NM\_001107335  
Red=Cloning site Blue=ORF Green=Tags(s)

TTTTGTAATACGACTCACTATAGGGCGGCCGGAATTCGTCGACTGGATCCGGTACCGAGGAGATCTGCC  
GCCCGATCGCC

ATGACTGTGTTTCAGGCAGGAAAACGTGGACGACTACTACGACACCGGGCAGGAACTGGGCAGCGGACAGT  
TCGCCGTTGTGAAGAAATGTCGTGAGAAAAGTACCGGTCTTCAGTATCGCGCCAAGTTCATCAAGAAAAG  
GAGGACCAAGTCCAGCCGGCGGGCGTGAGCCGAGAGGACATCGAGCGGGAGGTCAGCATCCTGAAGGAG  
ATCCGGCACCCAAACGTCATCACCTGCATGAGGTCTACGAGAACAAGACAGACGTCATTCTGATCCTGG  
AGCTTGTGTCAGGAGGCGAGCTGTTGACTTCTGGCTGAGAAGGAATCTCTCACTGAAGAAGAAGCAAC  
CGAGTTCCTCAAGCAGATCCTCAGCGGCGTTTACTACCTGCACTCGCTTCAAATCGCCACTTTGACCTG  
AAGCCGAAAACATAATGCTTCTGGATAGAAATGTGCCAAAACCTCGGATCAAGATCATCGACTTCGGCC  
TGGCCATAAAATTGACTTTGAAATGAATTCAAAACATATTTGGGACACCAGAGTTTGTGGCTCCGGA  
GATCGTCAACTATGAGCCCTTGGTCTTGAGGCAGACATGTGGAGCATTGGGTAATAACCTATATCCTC  
CTAAGCGGGCCCTCCCTTTTCTTGAGACACCAAGCAAGAAACATTAGCGAATGTATCTGCTGCAACT  
ATGACTTTGAGGAGGAATTCCTCCGCAACACCAGTACCCTTGCCAAAGATTTTCATCAGAAGGCTGCTGGT  
CAAGGATCCAAAGAAGAGGATGACAATCCAGGACAGTTTGCAGCACCCCTGGATCAAGCCTAAAGACACC  
CAACAAGCACTTAGTCGAAAAGCCTCAGCAGTAAACATGGAGAAATTCAGAAAGTTTGCAGCTCGGAAAA  
AATGGAACAATCTGTTGCTTGATATCACTGTGCCAAAGATTATCCAGGTCAATTTTGTCCAGAAGTAA  
CATGAGCGTTGCCAGGAGCGATGATACTCTGGATGAGGAAGACTCCTTTGTGATGAAAGCCATCATTAT  
GCCATCAATGATGACAACGTCCCGGCTGCAGCACCTCCTGGGCTCATTGTCCAGCTATGATGTCAACC  
AGCCCAACAAGCACGGGACACCTCCATTACTGATTGCTGCAGGCTGTGGGAATATTCAGATGTTACAGTT  
ACTCATAAAACGGGGCTCAAGGATCGACGTCCAGGATAAGGGAGGATCCAATGCTATCTACTGGGCTCT  
CGGCATGGCCATGTGGATACTTTGAAGTTTCTCAATGAGAACAATGCCCTTTGGATGTTAAAGACAAGT  
CTGGAGAGACAGCTCTTACGTGGCAGCCGCTATGGCCATGCAGATGTGGTTCAACTCTTGTGCAGTTT  
TGGCTCTAATCCTGATTTCCAGGACAAGGAAGAGGAAACCCCTGCAGTGTGCTGCCTGGCAGGCTAT  
TACTCCGTGGCTAGAGCTCTTTGTGAAGTTGGCTGTAACGTGAATATCAAGAACCAGGAGGAGAGACCC  
CACTGCTGACAGCTTCTGCCAGGGGCTACCATGACATTGTGGAGTGTCTGGCTGAACATGGAGCTGACCT  
GAATGCTTCTGACAAGGATGGGCACATCGCCCTCATCTTGTGTGAGGCGCTGTCAGATGGAGGTCATC



[View online »](#)

AAGACCCTCCTTGCCATGGGTGCCTTGTGGATTTCCAGGATCGGCATGGCAACACCCCCCTGCATGTGG  
 CCTGCAAAGATGGGAGCGCGCCCATCGTGGTGGCCCTCTGTGAAGCCAGCTGCAACCTGGACATCTCAA  
 CAAGTATGGTCCGACTCCTCTCCACCTTGACGCAACAACGGGATCTAGATGTGGTCCGCTACCTCTGC  
 CTGATGGGCGCCAACGTGGAGGCTCTGACCTTGGATGGCAAGACGGCCGAGGACCTCGCCAAGGCAGAGC  
 AGCACGAGCACGTGGCAGGGCTCCTGGCAAGACTGCGGAAGGACACACCCGAGGGCTCTCATCCAGCA  
 GCTCCGACCCACGCAGAATCTCCAGCCCAGAATCAAGCTCAAACGTGTTTGGCCACTCGGGATCGGGGAAA  
 TCCACACTGGTGGAAATCTCAAGTGTGGGCTGTTAAGGAGTTTCTTCAGAAGGCGCCGGCCAGACTGT  
 CCTCTACCAACTCCACCCGCTTCCACCCGTCGCCCTGGCTACTAAGCCAACAGTCTCAGTGAGCATTAA  
 CAACCTGTACCCCGCTGTGAGAATGTGAGCGTGAGGAGCCGAAGCATGATGTTTGGCCAGGCCTCACC  
 AAAGGGATGCTGGAAGTGTTCGTGGCTCCGCTCACCACCTACACTGCTCGACCGATGACCAGTCCACCA  
 AAGCCATCGACATCCAGAATGCTTACTTGAACGGAGTTGGTGATTTTACGCGTATGGGAGTTCTCTGGAAA  
 CCCTGTGTACTTCTGTTGCTATGACTACTTCGCCGCCAACGATCCCACATCCATCCACATCATGTTTTT  
 AGTCTCGAAGAACCCTATGAGATCCAGCTGAACCAAGTATTTTCTGGCTTAGTTTCTTGAAGTCTCTGG  
 TCTCAGTTGAAGAACCCTATGATTTGGAGGCAAGCTGAAGAACCCTCTCCGAGTTGCTGGTGGCCAC  
 ACATGCTGACATCATGAACATCCCTCGGCTGCTGGGGGCGAGTTTGGATATGATAAAGATACATCCTTG  
 CTGAAAGAGATCAGGAACAGTTTGGGAATGACCTTCATGTCTCAAATAAGCTGTTTGTGCTGGATGCGAG  
 GAGCATCTGGGTCTAAGGACATCAAGTTCTCCGGAATCACCTGCAAGAAATACGGAGTCAGATTGTCTC  
 GGGGTGCCCTCCCATGACTCATCTGTGTGAGAAGATCATCTCCACTCTGCCCTCCTGGCGGAAGCTCAAC  
 GGGCCAAACCAGCTGATGTCGCTCCAGCAGTTTGTGTATGACGTGACGAGACCAGCTGAACCCCTGGCCT  
 CCGAGGATGACCTCAGGCGCATTGCACAGCAGCTGCACAGCACGGGAGAGATCAACATCATGCAGAGTGA  
 GACAGTGCAGGATGTGTTGCTGCTGGATCCTCGATGGCTCTGCACCAACGTCCTGGGGAAGCTGCTGTCT  
 GTGGAGACTCCCCGAGCCCTGCACCATTATCGGGGCCCTACACCATGGAAGATATCCAGCGTCTGGTCC  
 CCGACAGTGCAGTGGAGGAGCTGCTGCAGATCCTGGATGCCATGGATATCTGCGCCCGAGACCTGATGAG  
 CGGGACTATGGTGGATATCCCTGCTCTAATCAAAACAGACAGCCTGCAGCGCTCCTGGGCCGATGAGGAA  
 GACGAGGTGATGGTGTACGGAGGTGTGCGCATCGTCCCTGTAGAGCACCTCACTCCCTTCCCTGTGGCA  
 TCTTTCACAAAGTTCAGGTCAACCTGTGCCGTGGATCCACCAGCAGAGCACTGAGGGGGACGCGGACAT  
 CCGTCTGTGGGTGAGCGGCTGCAGGATCGCCAACCGTGGGGCTGAGTTGCTGGTGTGCTGGTCAATCAC  
 GGTGAGGGCATTGAGGTACAGGTGCGTGGACTGGAGACCGAGAAGATTAAGTGTGCTGCTGCTGGACT  
 CGGTGTGCAGCACCATCGAGACTGTCATGGCCACCACCTTGCCAGGGCTGTTGACGGTGAAGCACTACCT  
 GAGCCCCAGCAGCTAAGGGAGCATCACGAACCAGTATGGTCTACCAGCCCCGGGACTTCTCCGTGCG  
 CAGACCCTGAAAGAGAGCTCCCTCACCAACACCATGGGAGGGTACAAGGAGAGCTTCAGCAGCATCACGT  
 GCTTTGGGTGTCACGATGTCTACTCACAGGCCAGTCTTGGCATGGACATCCATGCATCAGACCTGAGTCT  
 CCTGACCCGAGGAAACTGAGTCGTCTTCTTGACCCACCGGACCCCATGGGGAAGGACTGGTGCCTTCTG  
 GCCATGAACTTGGGCCTCCCGGACATGGTGGCCAAACACAACGTCAATACCAGGGCTTCTAGGGATTTCC  
 TCCCCAGCCCAGTGCATGCCTTGTACAGGAATGGACCTCCTACCTGAGAGCACGGTGGGCATCCTTAT  
 ATCCAAACTTCGGGAGCTGGGGCGCCGGATGCTGCGGACTTTTTACTGAAGGCCTCCTCTGTGTTCAAG  
 ATCAACCTTGACGGCAATGGCCAGGAGGCTATGCCTCAAGCTGTAAACAGTGGCAGATCTACAATTCCA  
 TAAGCTCAGTGGTGTCCCGG

ACGCGTACGCGGCCGCTCGAGCAGAACTCATCTCAGAAGAGGATCTGGCAGCAAATGATATCCTGGATT  
 ACAAGGATGACGACGATAAGGTTTAA

Protein Sequence: >RR215317 representing NM\_001107335  
 Red=Cloning site Green=Tags(s)

MTVFRQENVDDYYDTGEELGSGQFAVVKKCREKSTGLQYAAKFIKKRRTKSSRRGVSREDIEREVSILKE  
 IRHPNVITLHEVYENKTDVILILELVAGGELDFLAEKESL TEEEA TEFLKQILSGVYYLHSLQIAHFDL  
 KPENIMLLDRNVPKPRIKIIDFGLAHKIDFGNEFKNIFGTPEFVAPEIVNYPELGLEADMWSIGVITYIL  
 LSGASPFLGDTKQETLANVSAVNYDFEEFFRNTSTLAKDFIRRLLVKDPKKRMTIQDSLQHPWIKPKDT  
 QQALSRKASAVNMEKFKKFAARKKWKQSVRLISLQRLSRSFLSRSNMSVARSDDTLDEEDSFVMKAIH  
 AINDDNVPLQLHLLGSLSSYDVNQPNKHGTPPLLIAAGCGNIQMLQLLIKRGSRIDVQDKGGSNAIYWAS  
 RHGHVDTLKFLNENKCPLDVKDKSGETALHVAARYGHADVQQLCSFGSNPDFQDKEETPLHCAAWHGY  
 YSVARALCEVGCNVNIKNREGETPLL TASARGYHDIVECLAEHGADLNASDKDGHIALHLAVRRCQMEVI  
 KTL L GHGCLVDFQDRHGNTPLHVACKDGSAPIVVALCEASCNLDISNKYGRTPHLAANNGILDVVRYLC  
 LMGANVEALTLDGKTAEDLAKAEQHEHVAGLLARLRKDTHRGLFIQQLRPTQNLQPRIKLLFGHSGSGK  
 STLVESLKCGLLSRFFRRRRPRLSSTNSTRFPSPPLATKPTVSVSINNL YPGCENVSVRSRSMFEPGLT  
 KGMLVVFVAPSHHLHCSTDDQSTKAIDIQNAYLNGVGFVWVEFSGNPVVFCCYDYFAANDPTSIHIIVF  
 SLEEPYEIQLNQVIFWLSFLKSLVSVVEEPIAFGGKLNPLRVVLVATHADIMNIPRPAGGEFGYDKDTSL  
 LKEIRNRFGNDLHVS NKLFVLDAGASGSKDIKVLRNHLQEIRSQIVSGCPPMTHLCEKIISTLPSWRKLN  
 GPNQLMSLQQFVYDVQDQLNPLASEDDLRIAQQQLHSTGEINIMQSETVQDVL LLDPRWLCTNVLGKLLS  
 VETPRALHHRGRYTMEDIQRLVPDSDVEELLQILDAMDICARDLSSGTMVDIPALIKTDSLQRSWADEE  
 DEVMVYGGVRIVPVEHLTPFPCGIFHKVQVNLCRWIHQQSTEGDADIRLWVSGCRIANRGAELLVLLVNH  
 GQGIEVQVRGLETEKIKCCLLLDSVCSTIETVMATTL PGLLTVKHVYLSPPQLREHHEPVMVYQPRDFRA  
 QTLKESSTNTMGGYKESFSITCFGCHDVYSQASLGMDIHASDLLTRRKL SRLLDPPDPMGKDWCLL  
 AMNLGLPDMVAKHNVNTRASRDFLPSVHALLQEWTSYPESTVGILISKRELGRRAADFLLKASSVFK  
 INLDGNGQEAYASSCNSGTSYNSISSVVS R

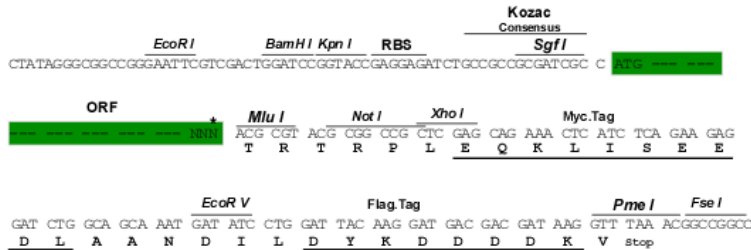
TRTRPLEQKLISEEDLAANDILDYKDDDDKV

Restriction Sites:

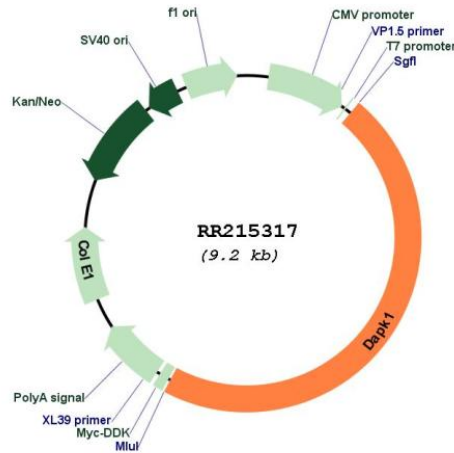
SgfI-MluI

Cloning Scheme:

Cloning sites used for ORF Shuttling:



\* The last codon before the Stop codon of the ORF

**Plasmid Map:**


**ACCN:** NM\_001107335

**ORF Size:** 4290 bp

**OTI Disclaimer:** The molecular sequence of this clone aligns with the gene accession number as a point of reference only. However, individual transcript sequences of the same gene can differ through naturally occurring variations (e.g. polymorphisms), each with its own valid existence. This clone is substantially in agreement with the reference, but a complete review of all prevailing variants is recommended prior to use. [More info](#)

**OTI Annotation:** This clone was engineered to express the complete ORF with an expression tag. Expression varies depending on the nature of the gene.

**Components:** The ORF clone is ion-exchange column purified and shipped in a 2D barcoded Matrix tube containing 10ug of transfection-ready, dried plasmid DNA (reconstitute with 100 ul of water).

**Reconstitution Method:**

1. Centrifuge at 5,000xg for 5min.
2. Carefully open the tube and add 100ul of sterile water to dissolve the DNA.
3. Close the tube and incubate for 10 minutes at room temperature.
4. Briefly vortex the tube and then do a quick spin (less than 5000xg) to concentrate the liquid at the bottom.
5. Store the suspended plasmid at -20°C. The DNA is stable for at least one year from date of shipping when stored at -20°C.

**RefSeq:** [NM\\_001107335.2](#), [NP\\_001100805.2](#)

**RefSeq Size:** 5878 bp

**RefSeq ORF:** 4293 bp

**Locus ID:** 306722

**Cytogenetics:** 17p14

**MW:** 160.1 kDa