

Product datasheet for **RR215235**

Efna5 (NM_053903) Rat Tagged ORF Clone

Product data:

Product Type:	Expression Plasmids
Product Name:	Efna5 (NM_053903) Rat Tagged ORF Clone
Tag:	Myc-DDK
Symbol:	Efna5
Synonyms:	Lerk7
Vector:	pCMV6-Entry (PS100001)
E. coli Selection:	Kanamycin (25 ug/mL)
Cell Selection:	Neomycin
ORF Nucleotide Sequence:	>RR215235 representing NM_053903 Red=Cloning site Blue=ORF Green=Tags(s)

TTTTGTAATACGACTCACTATAGGGCGCCGGAATTCGTCGACTGGATCCGGTACCGAGGAGATCTGCC
GCC**GCGATCGCC**

ATGTTGCACGTGGAGATGTTGACGCTGCTTTTCTGGTGTCTGGATGTGTGTGTT**CAGCCAGGACCCGG**
GCTCCAAAGTCGTCGCCGACCGCTACGCCGTCTACTGGAACAGCAGCAACCCAGATTCCAGAGGGTGA
CTACCACATCGATGTCTGTATCAATGACTACCTGGATGTTTTCTGCCCTCACTATGAGGACTCTGTACCA
GAGGATAAGACTGAGCGCTATGTCTGTACATGGTGAATTTTGATGGCTACAGTGCCTGCGACCACACAT
CCAAAGGGTTCAAGAGATGGGAATGTAACCGGCCCTCACTCTCAAACGGACCGCTGAAGTTCTCGGAGAA
ATTCCAGCTTTCACTCCCTTTTCTTTAGGATTTGAATTCAGGCCAGGCCGAGAGTATTTCTACATCTCC
TCTGCAATCCCAGACAATGGAAGAAGATCCTGCCTAAAGCTCAAAGTCTTTGTGAGGCCAACAAACAGCT
GTATGAAAATATAGGTGTTCTGTGATCGTGTTCGATGTTAACGACAAAGTAGAAAATTCATTAGAACC
AGCAGATGACACCGTACATGAGTCAGCCGAGCCATCCCGCGGAGAGAACGCGGCACAAACACCAAGGATA
CCAGCCGCCTTTGGCAATCCTACTGTTCCCTCTGGCGATGCTTTTGACATTA

ACGCGTACGCGGCCGCTCGAGCAGAAACTCATCTCAGAAGAGGATCTGGCAGCAAATGATATCCTGGATT
ACAAGGATGACGACGATAAGGTTTAA



[View online »](#)

Protein Sequence: >RR215235 representing NM_053903
 Red=Cloning site Green=Tags(s)

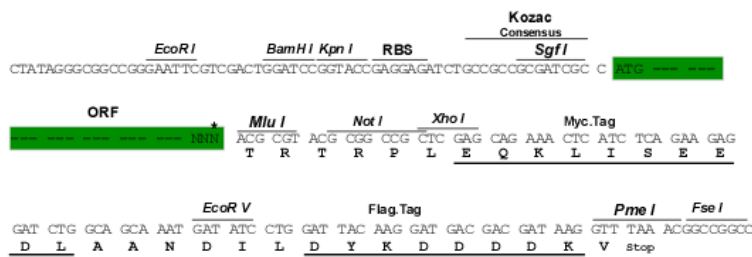
MLHVEMLTLLFLVLWMCVFSQDPGSKVVADRYAVYWSSNPRFQRGDYHIDVCINDYLDVFCPHYEDSVPE
 EDKTERYVLYMVNFDGYSACDHTSKGFKRWE CNRPHSPNGPLKFSEKFQLFTPFSLGF EFRPGREYFYIS
 SAIPDNRRSCLKLVFVRPTNSCMKTI GVRDRVFDVNDKVENSL E PADDTVHESAEP SRGENAAQTPRI
 PSRLLA ILLFLLAMLLTL

TRTRPLEQKLISEEDLAANDILDYKDDDDKV

Restriction Sites: Sgfl-MluI

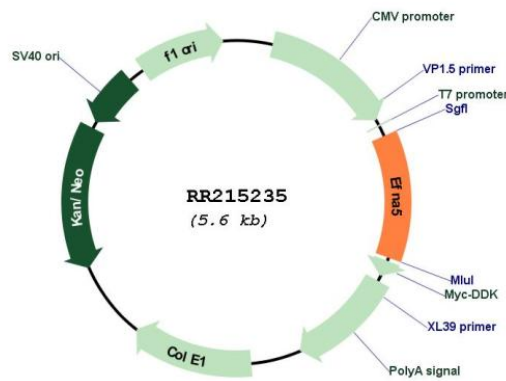
Cloning Scheme:

Cloning sites used for ORF Shuttling:



* The last codon before the Stop codon of the ORF

Plasmid Map:



ACCN: NM_053903

ORF Size: 684 bp

OTI Disclaimer:	The molecular sequence of this clone aligns with the gene accession number as a point of reference only. However, individual transcript sequences of the same gene can differ through naturally occurring variations (e.g. polymorphisms), each with its own valid existence. This clone is substantially in agreement with the reference, but a complete review of all prevailing variants is recommended prior to use. More info
OTI Annotation:	This clone was engineered to express the complete ORF with an expression tag. Expression varies depending on the nature of the gene.
Components:	The ORF clone is ion-exchange column purified and shipped in a 2D barcoded Matrix tube containing 10ug of transfection-ready, dried plasmid DNA (reconstitute with 100 ul of water).
Reconstitution Method:	<ol style="list-style-type: none">1. Centrifuge at 5,000xg for 5min.2. Carefully open the tube and add 100ul of sterile water to dissolve the DNA.3. Close the tube and incubate for 10 minutes at room temperature.4. Briefly vortex the tube and then do a quick spin (less than 5000xg) to concentrate the liquid at the bottom.5. Store the suspended plasmid at -20°C. The DNA is stable for at least one year from date of shipping when stored at -20°C.
RefSeq:	NM_053903.1 , NP_446355.1
RefSeq Size:	768 bp
RefSeq ORF:	687 bp
Locus ID:	116683
UniProt ID:	P97605
Cytogenetics:	9q37
MW:	26.4 kDa
Gene Summary:	Ephrin-related tyrosine-kinase receptor, designated ephrin-A5 based on structure and sequence relationships; implicated in nervous system development, particularly with axon pathfinding and fasciculation [RGD, Feb 2006]