

Product datasheet for **RR215177**

Sts (NM_012661) Rat Tagged ORF Clone

Product data:

Product Type:	Expression Plasmids
Product Name:	Sts (NM_012661) Rat Tagged ORF Clone
Tag:	Myc-DDK
Symbol:	Sts
Vector:	pCMV6-Entry (PS100001)
E. coli Selection:	Kanamycin (25 ug/mL)
Cell Selection:	Neomycin



[View online »](#)

ORF Nucleotide Sequence:

>RR215177 representing NM_012661
 Red=Cloning site Blue=ORF Green=Tags(s)

TTTTGTAATACGACTCACTATAGGGCGGCCGGAATTCGTCGACTGGATCCGGTACCGAGGAGATCTGCC
 GCCGCGATCGCC

ATGCTCTGGCCCTGTCTCCTTGCCTGCTCCTCTCCAGCTCAACTTTCTGTGTCTGCCGTCTGCTG
 CTGGACCTAACTTCTGCTCATCATGGCTGATGACCTTGGCATTGGGGACCTAGGCTGCTATGGCAACCG
 CACACTCAGGACGCCACACATCGACCGCTGGCCCTTGAGGGGGTGAAGTTGACTCAGCACCTGGCGGT
 GCGCCCTGTGCACCCCGAGCCGCTGCCTTCTTACCGGGCGTACCCTGTGCGGTGAGGATGGCAT
 CACATGGCCGCTGGGTGATTCTGTTCTCGGCATCATCTGGGGGCTCCCGCCAATGAAGTACCTT
 TGCAAAGTTGCTCAAGGGTCAAGGCTACACCACCGGGCTGTAGGGAAGTGGCATCTGGGGCTGAGCTG
 CAAGCAGCCTCTGACTTCTGCCACCACCTGGGCGCATGGCTTTGACCGCTTCTGGGCACGCCACCA
 CCAACTGAGGGACTGCAAGCCAGGGGGCGGGACCGTGTGGCTCTGCCAACAAGTATTCGTGGTCT
 GCCATGAATATTCTGGGGCAGTGTCTGGCCATGGCACTTGGCGGTGGGCAGGGCTGGCCCGCCC
 CCAGGGTGGGTGTCTGGGGTACAGTGGCTGCCATGGCGCGGTGGGCGGGCCATGTGGCCTTCTCT
 ACCACTCCGCCCAGCCAACTGCTTCTCATGGCCGACTTACCATCACCAACAGCCCACGGACTACAA
 GGGGCTCACACAGCGCTGGCAAGCGAGGCTGGGGACTTCTGCGCAGGAACAGGGACACGCCCTTCTG
 CTATTCCTGTCTTTCATGCATGTGCACACGGCACACTTCCCAACCTGAGTTTCCGGGCGAGAGCTGC
 ATGGGGCTATGGAGATGCTGTGGAGGAGATGGACTGGCCGTAGGCCAGGTCTTGGCACACTGGCAA
 GCTGGGCTCGCCAACAACACTCGTGTACTTACGTCGACCTGGCGCACAGTGGAGGAGCTTGGC
 CCCAACGGTGAACGGCATGGCGGGAGCAACGGAATTTACAGGGGGCGGAAGGCCAACACGTGGGAGGGT
 GCATCCGTGTGCCTGGACTTGTGCGCTGGCCCGCGTGATTGTGCCCGCCAGGAGGTGAGGAGCCCA
 GAGCAACATGGACGTCTTCCCCTGTGGCCAGGCTTGCAGGGGAGAGCTGCCGACTGACAGGGTGATT
 GACGGGCTGACTTGATGCCCTGCTGCTGGCCATGTACAACACTCTGAGCATGAATTCCTGTTCCACT
 ACTGCAATGCCTACCTCAGCGCTGTGGCATGGCGGCCCAACAGCTCGTCCGTGGAAGGCGTTTTTA
 CTTACACCGAACTTCGACCCCCGGGCTAATGGTGTCTTCCACACAGTGTGCATGTGCCACGGC
 CACCATGTACGCACCATGATCCGCCCTGCTTTCGACATTGCCCGTACCCCAGGGAGCGCCACCCGC
 TCACGCCTGAAACAGAGCCGCGCCATGGTGAATCCTGCGCAACATGGATGCTGCGGCCCGTGCACAGT
 TGCTACCTAGAGGAGGCCCAATCAGCTTTCATGTCAAATGTGCATGGAAGCCATGGCTGCAGCTC
 TGCTGCCTTCCAAGCCCCACCCACTCGCATGCCGCTGTGCTGGCGACGGG

ACGCGTACGCGGCCGCTCGAGCAGAACTCATCTCAGAAGAGGATCTGGCAGCAAATGATATCCTGGATT
 ACAAGGATGACGACGATAAGGTTTAA

Protein Sequence:

>RR215177 representing NM_012661
 Red=Cloning site Green=Tags(s)

MLWPCLLALLLSQLNFLCAARPGPGPNFLLIMADDLIGDLGCGYGNRTLRTPHIDRLALEGVKLTQHLAA
 APLCTPSRAAFLTGRYPVRSGMASHGRLGVFLFSASSGGLPPNEVTFKLLKQGQYTTGLVGKWHLGLSC
 QAASDFCHHPGRHGFDRFLGPTTNLRDCKPGGTTFVGSAAQVVFVLPNMLGAVLLAMALARWAGLARP
 PGWVFGVTVAAMAAGGAYVAFLYHFRPANCFLMADFTITQQPTDYKGLTQRLASEAGDFLRRNRDTPFL
 LFLSFMHVHTAHFANPEFAGQSLHGAYGDAVEEMDWAQGVLATLTKLGLANNTLVYLTSDHGAHVEELG
 PNGERHGGNSGIYRGGKANTWEGGIRVPGVLRWPGVIVPQVEVEPTSNMDFVPTVARLAGAELPTDRVI
 DGRDLMPLLLGHVQHSEHEFLFHYCNAYLSAVAWRPHNSSVWKAFFYFTPNFDPGSGCFSTHVMCHG
 HHVTHDPLLLFDIARDPRERHPLTPETEPRHGEILRNMDAAARAHAHVATLEEAPNQLSMSNVAWKPLWL
 CLPSKPHPLACRCAGDG

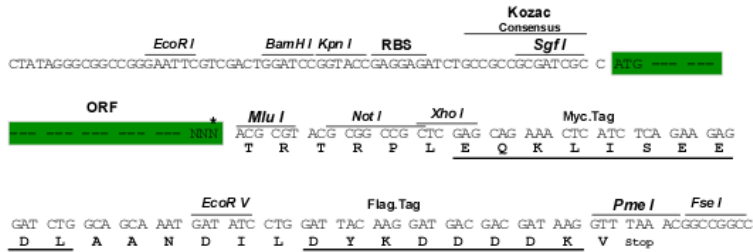
TRTRPLEQKLI SEEDLAANDILDYKDDDDKV

Restriction Sites:

Sgfl-MluI

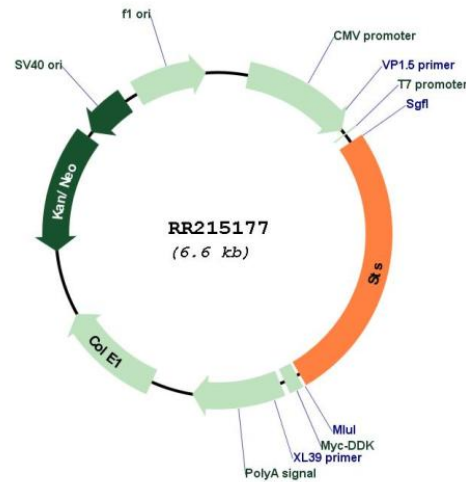
Cloning Scheme:

Cloning sites used for ORF Shutting:



* The last codon before the Stop codon of the ORF

Plasmid Map:



ACCN:

NM_012661

ORF Size:	1731 bp
OTI Disclaimer:	The molecular sequence of this clone aligns with the gene accession number as a point of reference only. However, individual transcript sequences of the same gene can differ through naturally occurring variations (e.g. polymorphisms), each with its own valid existence. This clone is substantially in agreement with the reference, but a complete review of all prevailing variants is recommended prior to use. More info
OTI Annotation:	This clone was engineered to express the complete ORF with an expression tag. Expression varies depending on the nature of the gene.
Components:	The ORF clone is ion-exchange column purified and shipped in a 2D barcoded Matrix tube containing 10ug of transfection-ready, dried plasmid DNA (reconstitute with 100 ul of water).
Reconstitution Method:	<ol style="list-style-type: none">1. Centrifuge at 5,000xg for 5min.2. Carefully open the tube and add 100ul of sterile water to dissolve the DNA.3. Close the tube and incubate for 10 minutes at room temperature.4. Briefly vortex the tube and then do a quick spin (less than 5000xg) to concentrate the liquid at the bottom.5. Store the suspended plasmid at -20°C. The DNA is stable for at least one year from date of shipping when stored at -20°C.
RefSeq:	NM_012661.1 , NP_036793.1
RefSeq Size:	2472 bp
RefSeq ORF:	1734 bp
Locus ID:	24800
UniProt ID:	P15589
Cytogenetics:	Xq21
MW:	62.7 kDa
Gene Summary:	enzyme that converts sulfated precursors to estrogen during pregnancy [RGD, Feb 2006]