

Product datasheet for **RR215150**

Apc2 (NM_001106769) Rat Tagged ORF Clone

Product data:

Product Type: Expression Plasmids
 Product Name: Apc2 (NM_001106769) Rat Tagged ORF Clone
 Tag: Myc-DDK
 Symbol: Apc2
 Vector: pCMV6-Entry (PS100001)
 E. coli Selection: Kanamycin (25 ug/mL)
 Cell Selection: Neomycin
 ORF Nucleotide Sequence: >RR215150 representing NM_001106769
 Red=Cloning site Blue=ORF Green=Tags(s)

TTTTGTAATACGACTCACTATAGGGCGGCCGGGAATTCGTCGACTGGATCCGGTACCGAGGAGATCTGCC
 GCC**CGATCGCC**

ATGGCCAGCTCCGTGGCCTCGTACGAGCAGCTGGTGGCCAGGTGGAGGCCTGAAGGGCGGAGAACA
 ACTTAAGACAGGAGCTGAGGGATAACTCTAGCCATCTCTCCAAGCTGGAGACAGAGACTTCTGGCATGAA
 GGAGGTCCTGAAACACCTTCAGGGCAAGCTGGAGCAGGAGGCGAGAGTGTGGTATCCTCCGGCCAGACA
 GAAGTGTAGAGCAACTGAAAGCTTTCAGACTGACATCAGTAGCCTCTATAACCTGAAGTTCCATGCC
 CGGCCCTGGGCCCTGAGCCTGCTGCCAGACTCCAGAGGGAAGCCAGTACATGGCCCTGCACCGTCCAA
 GGACAGCTTCGGAGAGCTGAGCCGGGCCACCATCCGCCTGCTGGAAGAACTAGACCAGGAGAGATGCTTC
 CTGCTGAGCGAGATAGAGAAAGAGGAGAAGGAGAAGCTGTGGTATTACTCTCAGCTCCAGGGCCTCTCTA
 AGCGCTTGGATGAACTGCCACACGTAGACACGCAGTTTTTCGATGCAGATGGATCTAATTCGGCAGCAGCT
 GGAGTTCGAAGCCAGCACATCCGCTCGTTGATGGAGGAGCGCTTCGGTACCTCAGACGAGATGGTGCAG
 CGGGCTCAGATCCGGGCTTCACGCCTGGAGCAGATTGACAAGGAGCTGTTGGAAGCCAGGACCGGGTGC
 AGCAGACGGAGCCCGAGCGCTGCTGGCGGTGAAGCCTGTGGCAGTGGAGGAGCAGGAGGAGAAGTTCC
 CACACACCCTGAGGATGTCACCCCCAGCCTGGCAACAGCAAGGTGGAGGTCGTGTTCTGGCTTCTATCT
 ATGTTGGCAACGCGCAGCAGGAAGATACTGCGGCACGCTGCTCGCCATGTCCAGCTCGCCAGAGAGCT
 GCGTAGCCATGCGCCGCTCGGGATGTCTGCCACTGCTGCTCCAGATCCTCATGGCACTGAGGCTGGGT
 TGTGGGGCGCACAGGAACCCCGGAGCGCTGGTGCCAAAGATGCACGCATGCGTGCCAACGCGGCCCTG
 CACAACATAGTCTTCTCCAGCCGGATCAGGGCCTGGCACGCAAGGAGATGCGTGTGCTGCACGTGCTGG
 AGCAGATCCGAGCCTACTGCGAGACCTGCTGGGACTGGCTTCAGGCGCGGACAGCGGGACAGAGAGTGG
 TACAGGAGACACTCCTGTCCCTATCGAGCCTCAGATCTGCCAGGCCGCTGTGCAGTGTGAAGCTGTCA
 TTTGACGAGGAATACCGTCGGGCTATGAATGAGCTAGGGGGCTGCAGGCTGTGGCCGAGCTACTGCAGG
 TGGATTATGAGATGCACAAGATGACCCAGGATCCACTCAACCTCGCCCTGCGCCGCTACGCTGGCATGAC
 CCTCACCAACCTCACCTTCGGAGACGTTGCCAACAAGGCCACTCTGTGTGCCCGCCGAGGCTGCATGGAA
 GCCATTGTGGCCAGCTGGCCTCTGAGAGCGAGGAGCTGCATCAGGTTGTTTCCAGTATTCTGCGTAACC
 TGTGTTGGAGGGCGGACATCAACAGCAAGAAGGTGCTGAGGGAGGTTGGCAGCATGACCGCTTTGATGGA
 ATGTGTGCTGCGGGCCTCAAGGAGTCCACTCTAAGAGCGTGCTCAGTGTCTGTGGAACCTGTCCGCA



[View online »](#)

CACAGCACAGAGAACAAGGCAGCTATCTGCCAGGTGGATGGCGCCTGGGTTTCCTGGTGAGCACCTAA
 CATAACCGTTGCCAAGGGAACCTCCCTAGCAGTATCGAGAGTGGCGGTGGGATCCTGCGCAACGTGTCAAG
 CCTCATTGCCACGCGGGAGGACTACAGGCAGGTGCTCCGTGACCACAACCTGCCTACAGACTGTGCGAG
 CACCTCACGTGCGACAGCTTACTATCGTGAGCAATGCCTGCGGCACCCCTTGGAACTGTCTGCCCGCA
 GCCCCCGCAGCAGGAAGTGTGGGACCTGGGGCTGTGGGCATGCTACGAAACCTCGTCCACTCAA
 ACACAAGATGATCGCCATGGGTAGCGCTGCCGCTCTGCGGAACCTGCTGGCCACCGACCGGCAAGTAT
 CAGGCCCGACCCATGGCAGTCTCCCGAGCACCTGCGTGGCCAGTCTGTACGTCCGCAAGCAGAGGGCCC
 TGGAGCCGAGCTGGACACTCGGCACCTGGTGCATGCGCTCGGTCACTTGGAGAAGCAGGGTCTGCCTGA
 GGCAGAGACCACTTCAAAGAAGCCCTGCCACCCCTCCGCCACCTGGACGGGCTGGTGCAGGACTATGCC
 TCTGATTCTGGCTGCTTTGATGATGATGATGCACCATCCCTGGCTGCTGCGGCCACCACAGCTGAGCCCG
 CCAGCCCAGCAGTGATGTCTATGTTCTTGGTGGTCCCTTCTTTCAGGGCCAGGCACTGGCCCGACCCC
 ACCTGCCCGCCAGGGTGGCTAGAAGCTGAGAAGGAGACTGGTGGGGAGGCACTGTGGCTGCTAAAGCC
 AAGGCCAAGCTAGCGTTGGCTGTGGCTCGCATCGACCGACTGGTGGAGGACATCTCTGCCCTGCACACT
 CATCAGACGACAGCTTCACTCTAGCTCGGGGACCCGGGGCAGGAGGCCCAAGGGAGGGCCGTGCGCA
 GTCTGCTCTCCATGCCGGGACACAGAGGGTGGGCGGCTGAGGCTGGCAGCCGGGCGCACCTCTGCTG
 AGGCTCAAAGCGGCCACACCAGCTCTCAACGACAGCCTGAACAGTGGTAGCACCAGCGATGGCTACT
 GTACCCGGGAACACATGACGCCTTGCCACTGGCCGTGTGACCGAGCACCGCATGGCCAGTATGCGG
 ACAGACTCGGCCAGCCGACTGGACCTAGACCTTCCAGCCGGGCTGAGCTTCTGCCCGGGACACAGCA
 GCCACTGATGCCCGAGTGCACACCTAAGTTATCCCAACCTATCAGCAGTGCCTACTGCTTATGGGG
 CCCCGGGGCAAGTGTACAGACCCTGGTGGGCTTGGAACTCCCGGGGACTCGGAAACAGGCATGGAT
 ACCTGCAGATAGTTTGTAAAGTCCCGAGAAGCTGGTGGCTCCCGACTGCCGGTACTAGCAAGGTG
 CTGCAGAAGCTGGTGGCAGGATGGGCCGATGTCCCTCTCCAGGTGCAGTTCCTGTCTCTGTCTT
 CCACGGGCCATGCAGTCCCGCAGGTTGAGAACCTTGTGACAGCGATTATCCCTGGAAAGGCTTGA
 GGAGGCTGGTCCGCGAGGCCGAGCTAGACAGGGCGTGGAGAGCATCCGGGTCCACTCTCTCCGGTG
 TCCATCCCGGCCACAGCGGGTCAAGTCAAGTCTTGGGGTGGAGGATGCTACACCATCCAGTTCAT
 CTGAGAACTGCGTCCAGGAGACACCTTGGTCTGAGCCGCTGTAGCTCTGTGAGCTCCCTGGGAGCTT
 CGAGAGCCGTTCCATCGCCAGCTCCATCCCGAGCGACCCCTGAGTGCCTGGGAGTGGTACAGTGA
 CCCAGCGAGTGCAGACAGCCCGGCCAGACAATGCCACCCAGCCGAGCAGGACTCCACCGGCACCTC
 CCGGGCAGCCGAGGCCAGCAGTTCAGCTGCAGTGGGAAAGTACGTGAAGCGCTTCTGGACATCGC
 AGACTGTCCGGAAGATGCCAGCCGCCCTCGGAGCTGGACGCGGGCAGCGTACGCTTACCGTGGAGAAG
 CCGGACGAGAATTTCTTGTGCTTCCAGCTCAGCGACTGGCCCTGCATGAGTGTATGTCCAGCAGG
 ACGTGGAACTGCGCTGAGGCCACCAGCCTGTCCAGAAGTGCCTGGTGGTGGTGGGGGCCACCGTCCG
 GAGGGACGAGGCTACCAGCCGCTGGATGGCCAGCACCAGCTGGCTCTAGGGCTCGGTACGCGGCTGAT
 AAAGAAGTAGAGGCGCTGCGTGAATGTCTGGGGCAGCCATGCCGGCCCGGCTCCGCAAGGTGGCCTCGG
 CCTTGGTGCCTGGCCGCGTGCCTGCGGTCCCGTGTACATGTTAGTGCCTCCCGGCTCGGGGTGA
 TGACTCGGGCACAGACTGTGAGAGGACAGCCTGTCACTTTCCAGTGCAGCCTCTCTCAGTGCAGAG
 ACCTTACAGGGACCTCCAGGATAAGCCGGCCAGGCTGGGGACAGGCAGAACTACAGGCCGAGCTG
 CTCCTGCCAGGCAGACCCGTGGGCACCGGCCAAGGCAGCAGGAGCAGGTGCTGGTAAGAGCACAGGCA
 CACACGGGGGCTAATAGGAACCGGGCAGGATTGGAACCTACCCCTCAGCCGGCCAGAGTGTCTCGGTCC
 AACAGGGATGGCTCATGCCAGACCCGGACCCGTGGAGACGGTGCCTGCAGTGCCTATGCCTCACGACAC
 CCACAGAGGAAGCTGTGTACTGTTCTATGACTCTGACGAGGAGCCACCAGCCACAGCACCACCAACTCG
 GCGGGGCTCCGCCATCCCTCGGGCTCTTAAACGTGAGAAACCCGAGGCAGGAAAGAGACCCCAACCAGG
 GCGACACAGCCTGCCACACTCCCTGTGAGGGCGCAGCCGAGACTGATAGTAGATGAGACCCACCCTGCT
 ATTCCTGACTTCTCGGCTAGTTCCTCAGCGAGCCTGAGGCCTCTGAACAGCCAGCCTGCCACCCTCG
 AGTGGAGGAGCAGGGCAGTAAACAAGATAGTAGCCCAAGGGCAGAAGAGGAGCTCCTGCAGAGATGATC
 AGTTTAGCTATGCCAGGCGCCGACCCAGGTACCCAGCTCACGGCGTGCAGCCAGAGCTGTGAGGT
 CAGACATAAGGCCCACTGAGTTACCACAGAAATGCCGTGAAGAGGTTCTGGTCTGATCCAGCCTCTGA
 CCTAGATAGCGTGCAGTGGCAGGCTATCCAAGAGGGCGCAAACCTCCATTGTACAGTGGCTGCATCAGGCA
 GCGGCCAAAGCCAGCCTGGAAGTCTTCTGAGTCTGACTCCCTCTTGTCTTGGTGTCTGGGCTGTGAG
 CAAGCTCCACCCTCCAGCCCTCCAAGCTCAGAAAAGGGCGAAAGCCAGTGGCTGAGGCTGGGGGTGCTG
 GCGTCTGAGAAAACGGGGCACAACCTTCCACTAAGGGCAGTGGGAGTCCCGGTTTCTAGTGGCCCTGAG
 AAGGCAAAGGGTACCCAGAAAACGATGGCAGGGGAGTCAAGCATGCTCCGGGAAGGACAGTGTCTACA

CTGCCAGCCCTGCTTCCCGGGCTCAGTCCAAAGGTATTTCTGGACCTTGTTCCGCACCTAAGAAGATGGG
GACATCTGGTACCACTCAGCCAGAACTGCCACAAAACCCAGCCCTGAGCAACAACGTTCTCGGAGC
CTGCACCGACCAGGCAAGATCTCTGAGTTGGCAGCCTTGAGCCACCCGCCAGGAGTGCTACTCCTCCAG
CCCGCCTACCAAGACCCCGTCTTCAAGCTTTACAGACCTCCCGGCATCCCAGTCCCTGCCTAGGCG
GTCCCCACTGGCCACTCCAACAGGAGGGCTCTGCCTGGACCTGGGGGTCCCGGTGCCAAGTCACCA
GCCCCGGCTCTTCTGGCTAAGCAACACAAGACCCAGAAGTCACCCGTGGTATCCCATTTCATGCAAAGGC
CAGCCAGGCGAGTGCCACCTCCACTGGCCAGGCCATCCCAGAGCCTGGCTCCAGGGCCGAGCTGGGGC
TGAGGGAACCTCTGGGGCACGTGGCAGCCGCTGGGCCTGGTACGTGTGGCCTCAACTCGCTCTAGCGGC
AGTGAGTCTCAGACCGCTCCGGCTTCAAGGACAGTACCTTCATTAAGGAGTCCCCAGGTCTCTCC
GGCGCCGTAGATCGGAGCTGTCTCTGCGGACTCCACGGTCTCCACCTCCCAGACCGCTTCGCCCTGCCG
CGGACGGCCCGCACTCCCGCTGTCTTCTCTGCTCCTCTCGCTGTGATGAGCTGCGAGCGTCTCCACGG
CAGCCCCGTCAGCACAGAGGGTCCCGCAGGCCAAGCCAGGTCTTGCCCCAGTGCGCCAGACGCACCA
GCTCCGAGAGCCCTCACGCCTGCCTGTACGGGCGACCCCTGGGCGGCCGAGACAGTCAAGAGGTACGC
CTCCCTGCCACATATTAGTGTGTCCCGCAGGCCGATAGCGCTGTCTCTGTGCCACCACCAGGCCAAT
GCCACTCGCAGGGGAAGTGATGGCGAGGCCAGGCCGCTGCCAGGGTGGCTGCGCCGGGTACGACCTGGC
GTCGTATCAAAGATGAAGATGTCCCCACATCCTGCGCAGCACACTGCCGCCACTGCCCTGCCTCTCAG
GGGCTCATCACCCGAAGACAGTCTGTGGAATCCACACCGCAAGACTAGCGACGCAAGTGTACAGACA
GAGGATGTGGCCACCTCTAAAACCAACTCCAGCACGTGCGCCAGCCTGGAGAGCAGGGATCCCCACAGG
CCCCGATCAGTGGCCCTGTTGCTCCACTGGGCAGCGATGTGGATGGACCAGTACTTGCCAAGCCTCCTGC
CTCAGCGCCCTTACCCATGAGGGTCTGAGTGTGTGTCACGGGGGGCTTCTACTAGCAGGCATGGCTCC
CCCAGTAGGGCTGCACGGGTTCCCCCTTCAACTACGTGCCAGCCCTATGGTAGTGGCTACAATGACCA
GTGACTCAGCTGTGGAGAAAGCCCCTGTTACCTCTCCAGCCAGCCTCCTGGAG

ACGCGTACGCGGCCGCTCGAGCAGAACTCATCTCAGAAGAGGATCTGGCAGCAAATGATATCCTGGATT
ACAAGGATGACGACGATAAGGTTTAA

Protein Sequence: >RR215150 representing NM_001106769
 Red=Cloning site Green=Tags(s)

```

MASSVASYEQLVRQVEALKAENTHLRQELRDNSSHL SKLETETSGMKEVLKHLQGKLEQEARVLVSSGQT
EVLEQLKALQTDISSLYNLKFHAPALGPEPAAQTPEGSPVHGPAPSKDSFGELSRATIRLLEELDQERCF
LLSEIEKEEKEKLWYYSQLQGLSKRLDELPHVDTQFSMQMDLIRQQLEFEAQHIRSLMEERFGTSDVMVQ
RAQIRASRLEQIDKELLEAQDRVQQTPEQALLAVKPVAVEEQEAEVPTHPEDEVTPQPGNSKVEVFWLLS
MLATRDQEDTARTLLAMSSSPESCVMRRSGCLPLLLQILHGTEAGSVGRGTGTPGAPGAKDARMRANAAL
HNIVFSQPDQGLARKEMRVLHVLEQIRAYCETCWDWLQARDSGTESGTGDTVPVIEPQICQAAACAVMKLS
FDEEYRRAMNELGGLQAVAELLQVDYEMHKMTQDPLNLALRRYAGMTLTNLTFGDVANKATLCARRGCM
AIVAQLAESEELHQVSSILRNL SWRADINSKVLREVGSMTALMECVLRASKESTLKSVL SALWNL SA
HSTENKAAICQVDGALGFLVSTLTYRCQGNLAVIESGGGILRNVSSLIATREDYRQVLRDHNCLQTLQ
HLTSHSLTIVSNACGTLWNL SARSPRDQELLWDLGAVGMLRNLVHSHKHKMIAMGSAALRNLLAHRPAKY
QAAAMAVSPGTCVPSLYVRKQRALEAELDRHLVHALGHLEKQGLPEAETT SKKPLPPLRHL DGLVQDYA
SDSGCFDDDDAPSLAAAATTAEPASPAVMSMFLGGPFLQGQALARTPPARQGGLEAEKETGGEAAVAKA
KAKLALAVARIDRLVEDISALHTSSDDSFSLSSGDPGQEAAPREGRAQSCSPCRGTEGGRREAGSRAHPLL
RLKAAHTSLSNSLNSGSTSDGYCTREHMTPCPLAVL TEHRDGPVCGQTRPSRLDL DLPRAELPARDTA
ATDARVRTIKLSPTYQHVPLLDGAPGAGVRPLVGLGTSPGTRKQAWIPADSLSKVPEKLVASPLPVT SKV
LQKLV AQDGPMSL SRCSSSL SSGTGHAVPSQVENLDDSDSLEEL EEEAGPGEAELDRAWRASGSTSLPV
SIPAPQGRSRGLGVEDATPSSSENCVQETPLVLSRCSVSSLGSEFESRIASSIPSDPCSALGSGTVS
PSELPDSPGQTMPPSRSRTPAPPGQPEASQFSLQWESYVKRFLDIADCRERCQPPSEL DAGSVRF TVEK
PDEFNSCASSL SALALHEL YVQQDVELRLRPPACPERAVGGGGHRRRDEATSRLDGPAPAGSRARSAD
KELEALRECLGAAMPARLRKVASALVPGRRALPVPVYMLVPAPARGDSDGTD SAEGTPVNFSSAASL SDE
TLQGPSRDKPARPGDRQKPTGRAAPARQTRGRHPKAAGAGAGKSTEHRGANRNRAGLELPLSRPQSARS
NRDGSCQTRTRGDGALQSLCLTTPTEEAVYCFYDSDEEPPATAPPTRASAIPRALKREKPAGRKETPTR
ATQPATLPVRAQPRLIVDETPPCYSLTSSASSLSEPEASEQPACHPRVEEQGSKQDSSPRAEEELLQRCI
SLAMP RRRRTQVPSRRRK PRAVRS DIRPTEL POKCREEVPGSDPASDLD SVEWQAIQEGANSIVTWHQA
AAKASLEASSESDSLSLVSGLSASSTLQPSKLRKGRKPVAEAGGAWRPEKRGTTSTKSGSGSPRFPSPGPE
KAKGTQKTMAGESAMLRGRTVIY TASPASRAQSKGISGPCSAPKKMGTS GTTQPETATKTPSPEQQR SRS
LHRPGKISELAALSHPPRSATPPARLTKTPSSSSSQTSPASQSLPRRSPLATPTGGPLPGPGGSPVPKSP
ARALLAKQHKTKQSPVRI PFMQRPARRVPPPLARPSPEPGSRGRAGAEGTPGARGSRLGLVRVASTRSSG
SESSDRSGFRRLTFIKESPGLLRRRRSELSSADSTVSTQ TASPGRPALPAVFLCSSRCDEL RASPR
QPLAAQVRPQAKPGLAPRAPRRTSSESPSRLPVRATPGRPETVKRYASLPHISVSRPPDSAVSVPTTQAN
ATTRGSDGEARPLPRVAAPGTTWRRIKDEDVPHILRSTLPATALPLRGSSPEDSPAGTPHRKTS DAVVQT
EDVATSKTNSSTSPSLESRDPPQAPISGPVAPLGSVDVGPVLAKPPASAPF THEGLSVVTGGFPTS RHGS
PSRAARVPPFNYPSPMVVATMTSDSAVEKAPVTSPASLLE
  
```

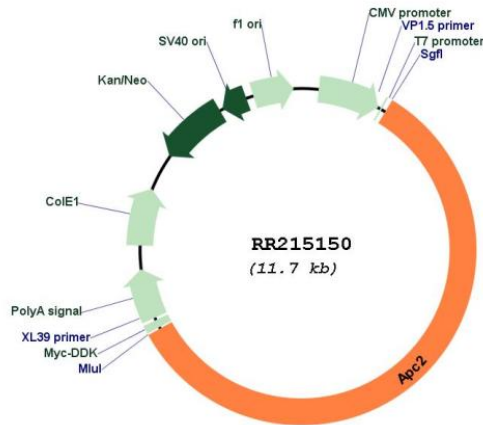
TRTRPLEQKLI SEEDLAANDILDYKDDDDKV

Restriction Sites: Sgfl-MluI

Cloning Scheme:



Plasmid Map:



ACCN:

NM_001106769

ORF Size:

6843 bp

OTI Disclaimer:

The molecular sequence of this clone aligns with the gene accession number as a point of reference only. However, individual transcript sequences of the same gene can differ through naturally occurring variations (e.g. polymorphisms), each with its own valid existence. This clone is substantially in agreement with the reference, but a complete review of all prevailing variants is recommended prior to use. [More info](#)

OTI Annotation:

This clone was engineered to express the complete ORF with an expression tag. Expression varies depending on the nature of the gene.

Components:

The ORF clone is ion-exchange column purified and shipped in a 2D barcoded Matrix tube containing 10ug of transfection-ready, dried plasmid DNA (reconstitute with 100 ul of water).

Reconstitution Method:

1. Centrifuge at 5,000xg for 5min.
2. Carefully open the tube and add 100ul of sterile water to dissolve the DNA.
3. Close the tube and incubate for 10 minutes at room temperature.
4. Briefly vortex the tube and then do a quick spin (less than 5000xg) to concentrate the liquid at the bottom.
5. Store the suspended plasmid at -20°C. The DNA is stable for at least one year from date of shipping when stored at -20°C.

RefSeq: [NM_001106769.2](#), [NP_001100239.2](#)

RefSeq Size: 9594 bp

RefSeq ORF: 6846 bp

Locus ID: 299611

Cytogenetics: 7q11

MW: 243.9 kDa