

Product datasheet for **RR215145**

Rab2a (NM_031718) Rat Tagged ORF Clone

Product data:

Product Type: Expression Plasmids
Product Name: Rab2a (NM_031718) Rat Tagged ORF Clone
Tag: Myc-DDK
Symbol: Rab2a
Synonyms: Rab2
Vector: pCMV6-Entry (PS100001)
E. coli Selection: Kanamycin (25 ug/mL)
Cell Selection: Neomycin
ORF Nucleotide Sequence: >RR215145 representing NM_031718
Red=Cloning site Blue=ORF Green=Tags(s)

TTTTGTAATACGACTCACTATAGGGCGCCGGGAATTCGTCGACTGGATCCGGTACCGAGGAGATCTGCC
GCC**CGATCGCC**

ATGGCGTACGCCTATCTCTTCAAGTACATCATCATCGGCGACACAGGTGTTGGTAAATCGTGCTTATTGC
TACAGTTTACAGACAAGAGGTTTCAGCCGGTGCATGACCTCACAATGGGTGTAGAGTTTGGTGCTCGAAT
GATAACCATTGATGGGAAACAGATAAACTCCAGATCTGGGATACAGCAGGGCAGGAGTCCTTTCTGTTCT
ATCACAAGGTCATATTACAGAGGTGCAGCGGGGCTTTACTAGTGTATGATATTACAAGGAGAGACACGT
TCAACCACTTGACAACCTGGTTAGAAGACGCCCGTCAGCATTCCAATCCAACATGGTCATCATGCTTAT
TGGAAATAAAAGTGACTTAGAATCTAGGAGAGAAGTAAAAAGGAAGAAGGTGAAGCTTTTGCACGAGAG
CATGGACTTATCTTATGGAAACTTCTGCCAAGACTGCTTCTAATGTAGAGGAGGCATTTAATACACAG
CAAAAGAAATTTATGAAAAATCCAAGAAGGGTCTTTGACATTAATAATGAGGCAAACGGCATCAAAAT
TGGCCCTCAGCATGCTGCTACCAATGCATCTCACGGAGGCAACCAAGGAGGGCAGCAGGCAGGGGGAGGC
TGCTGC

ACGCGTACGCGGCGCTCGAGCAGAACTCATCTCAGAAGAGGATCTGGCAGCAAATGATATCCTGGATT
ACAAGGATGACGACGATAAGGTTTAA



[View online »](#)

Protein Sequence: >RR215145 representing NM_031718
 Red=Cloning site Green=Tags(s)

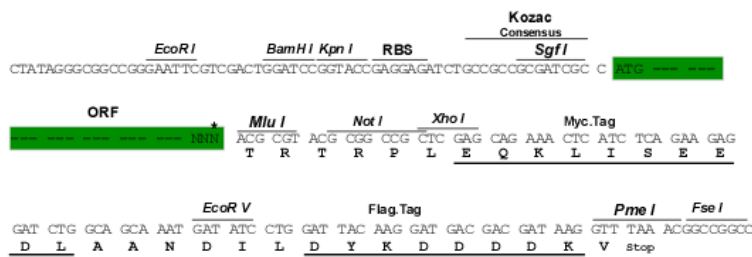
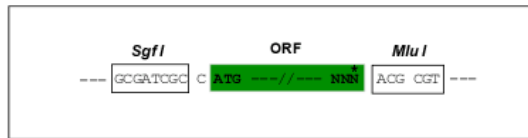
MAYAYLFKYIIIGDVGKSCLLLQFTDKRFQPVHDLTMGVEFGARMITIDGKQIKLQIWDTAGQESFRS
 ITRSYRGAAGALLVYDITRRDTFNHLTTWLEDARQHSNSNMVIMLIGNKSDLESRRVKKKEGEAFARE
 HGLIFMETSAKTASNVEEAFINTAKEIYEKIQEGVFDINNEANGIKIGPQHAATNASHGGNQGQQAGGG
 CC

TRTRPLEQKLISEEDLAANDILDYKDDDDKV

Restriction Sites: SgfI-MluI

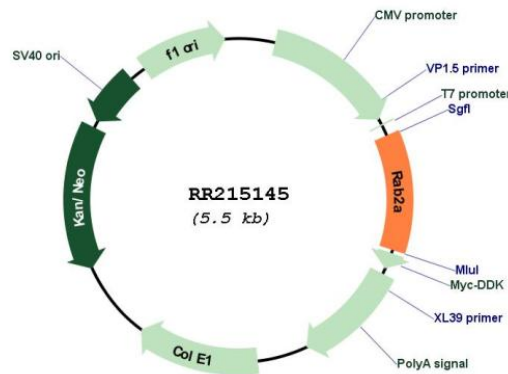
Cloning Scheme:

Cloning sites used for ORF Shuttling:



* The last codon before the Stop codon of the ORF

Plasmid Map:



ACCN: NM_031718

ORF Size: 636 bp

OTI Disclaimer:	The molecular sequence of this clone aligns with the gene accession number as a point of reference only. However, individual transcript sequences of the same gene can differ through naturally occurring variations (e.g. polymorphisms), each with its own valid existence. This clone is substantially in agreement with the reference, but a complete review of all prevailing variants is recommended prior to use. More info
OTI Annotation:	This clone was engineered to express the complete ORF with an expression tag. Expression varies depending on the nature of the gene.
Components:	The ORF clone is ion-exchange column purified and shipped in a 2D barcoded Matrix tube containing 10ug of transfection-ready, dried plasmid DNA (reconstitute with 100 ul of water).
Reconstitution Method:	<ol style="list-style-type: none">1. Centrifuge at 5,000xg for 5min.2. Carefully open the tube and add 100ul of sterile water to dissolve the DNA.3. Close the tube and incubate for 10 minutes at room temperature.4. Briefly vortex the tube and then do a quick spin (less than 5000xg) to concentrate the liquid at the bottom.5. Store the suspended plasmid at -20°C. The DNA is stable for at least one year from date of shipping when stored at -20°C.
RefSeq:	NM_031718.1 , NP_113906.1
RefSeq Size:	639 bp
RefSeq ORF:	639 bp
Locus ID:	65158
UniProt ID:	P05712
Cytogenetics:	5q13
MW:	23.5 kDa
Gene Summary:	may have GTPase activity; may regulate exocytic and endocytic membrane traffic; may play a role in the secretory pathway [RGD, Feb 2006]