

## Product datasheet for **RR215067**

### Rpia (NM\_001108632) Rat Tagged ORF Clone

#### Product data:

Product Type:	Expression Plasmids
Product Name:	Rpia (NM_001108632) Rat Tagged ORF Clone
Tag:	Myc-DDK
Symbol:	Rpia
Mammalian Cell Selection:	Neomycin
Vector:	pCMV6-Entry (PS100001)
E. coli Selection:	Kanamycin (25 ug/mL)
ORF Nucleotide Sequence:	>RR215067 representing NM_001108632 Red=Cloning site Blue=ORF Green=Tags(s)

TTTTGTAATACGACTCACTATAGGGCGGCCGGGAATTCGTCGACTGGATCCGGTACCGAGGAGATCTGCC  
GCC**CGATCGCC**

ATGCAGCGCCCCGGGCCCTTCAGCACCTCTACGGCGGGTCCTGGCCCCACTGCCCGGGCGGGCCGGG  
GCGCGCCTCGGGTGGGGCGGGAACAACCTGGGCCTCTCGGGCTCCACGTGCAGTTGCCGGGCGTAC  
ACAGTCGAGACCCGCGGCACAAGGGAGGCTCGAGCGGGCGGCCCGCCCCCTCCACGATGTCCAAG  
GCCGAGGAGGCTAAGAACTGGCAGCCACACGGCAGTGGAGAACCACGTGAAGAATAACCAAGTGTGG  
GAATTGGAAGTGGTTCTACAATTGTCCATGCTGTGCAGCGAATAGCTGAAAGAGTGAAGCAAGAGAACCT  
GGACCTCATCTGCATCCCCACATCTTCCAGGCCAGGCAGCTTATCCTACAGTATGGCTTAACCCTCAGT  
GACCTGGATCAACACCCGGAGATCGACCTTGCCATCGATGGTGTGATGAAGTGGATGCTGAGCTCAATC  
TCATCAAGGGTGGTGGAGGCTGCCTGACCCAGGAGAAGATTGTGGCTGGTTATGCCAGTCGCTTCATTGT  
GATCGCTGATTTCAAGAAAGATTCAAAGAACCTTGGGGATCGGTGGCACAAGGGGATTCTATTGAAGTC  
ATCCCAATGGCCTATGTCCAGTGAGTCGAGCTGTGACCCAGAAGTTGGGGGTGAGGTGGAACCTCGAA  
TGGCTGTCAACAAGGCAGGGCCTGTGGTGACAGATAATGGGAATTTATCCTGGACTGGAAGTTCGATCG  
GGTACATAAAATGGGGTGAAGTGAACACAGCTATCAAGATGACTCCAGGCGTGGTGGACACAGGACTTTTC  
ATCAACATGGCAGAGAGAGTCTACTTCGGGATGCAGGATGGCTCAGTGAACGTGAGGGAGAAGCCCTTC

**ACGCGT**ACGCGGCCGCTCGAGCAGAAACTCATCTCAGAAGAGGATCTGGCAGCAAATGATATCCTGGATT  
ACAAGGATGACGACGATAAGGTTTAA



[View online »](#)

**Protein Sequence:** >RR215067 representing NM\_001108632  
 Red=Cloning site Green=Tags(s)

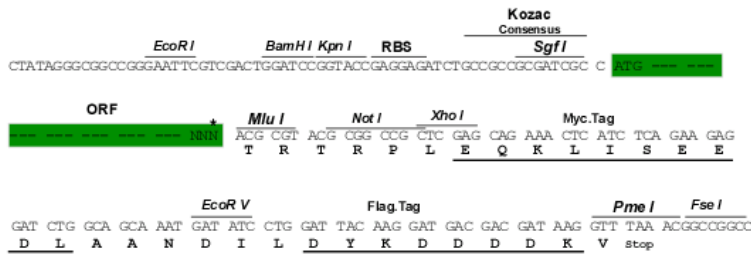
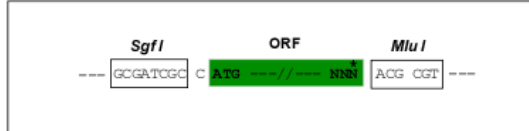
MQRPGPFSTLYGRVLAPLPGRAGGAASGGGGNNWGLSGSHVQLPGRTQSETRGDKGGSSAGGPAPSTMSK  
 AEEAKKLASHTAVENHVKNQVLGIGSGSTIVHAVQRIAEVKQENLDLICIPTSFAQRLILQYGLTSL  
 DLDQHPEIDLAIDGADEVDAELNLIKGGGGCLTQEKIVAGYASRFIVIADFRKDSKNLGDRWHKGIPIEV  
 IPMAYVPSRAVTQKFGGEVELRMAVKNAGPVVTDNGNFILDWKFDRVHKWGEVNTAIKMTPGVVDTGLF  
 INMAERYVYFGMQDGSVNVREKPF

TRTRPLEQKLISEEDLAANDILDYKDDDDKV

**Restriction Sites:** SgfI-MluI

**Cloning Scheme:**

Cloning sites used for ORF Shuttling:



\* The last codon before the Stop codon of the ORF

**ACCN:** NM\_001108632

**ORF Size:** 909 bp

**OTI Disclaimer:** The molecular sequence of this clone aligns with the gene accession number as a point of reference only. However, individual transcript sequences of the same gene can differ through naturally occurring variations (e.g. polymorphisms), each with its own valid existence. This clone is substantially in agreement with the reference, but a complete review of all prevailing variants is recommended prior to use. [More info](#)

**OTI Annotation:** This clone was engineered to express the complete ORF with an expression tag. Expression varies depending on the nature of the gene.

**Components:** The ORF clone is ion-exchange column purified and shipped in a 2D barcoded Matrix tube containing 10ug of transfection-ready, dried plasmid DNA (reconstitute with 100 ul of water).

**Reconstitution Method:**

1. Centrifuge at 5,000xg for 5min.
2. Carefully open the tube and add 100ul of sterile water to dissolve the DNA.
3. Close the tube and incubate for 10 minutes at room temperature.
4. Briefly vortex the tube and then do a quick spin (less than 5000xg) to concentrate the liquid at the bottom.
5. Store the suspended plasmid at -20°C. The DNA is stable for at least one year from date of shipping when stored at -20°C.

**RefSeq:** [NM\\_001108632.1](#), [NP\\_001102102.1](#)

**RefSeq Size:** 1812 bp

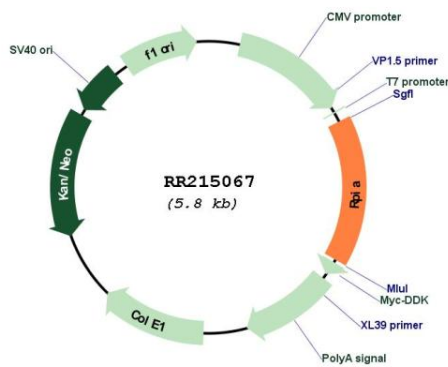
**RefSeq ORF:** 912 bp

**Locus ID:** 362383

**Cytogenetics:** 4q31

**MW:** 32.5 kDa

**Product images:**



Circular map for RR215067