

Product datasheet for **RR215051**

Serpib9 (NM_001007732) Rat Tagged ORF Clone

Product data:

Product Type: Expression Plasmids
Product Name: Serpib9 (NM_001007732) Rat Tagged ORF Clone
Tag: Myc-DDK
Symbol: Serpib9
Synonyms: MGC94010
Vector: pCMV6-Entry (PS100001)
E. coli Selection: Kanamycin (25 ug/mL)
Cell Selection: Neomycin
ORF Nucleotide Sequence: >RR215051 representing NM_001007732
Red=Cloning site Blue=ORF Green=Tags(s)

TTTTGTAATACGACTCACTATAGGGCGCCGGAATTCGTCGACTGGATCCGGTACCGAGGAGATCTGCC
GCC**CGATCGCC**

ATGAATACTCTGTCTGAAGCAAATGGCACCTTTGCCATCCATCTTTGAAGATGCTATGTCAAAGCAACC
CTTCAGAAAATGTATGTTACTCTCCTGTGAGCATCTCCTCTGCTCTAGCTATGGCTCTTTGGGGGCAA
GGGACAGACCCAAGTCCAGATATCTCAGGCACTGGTTTTGAACAAGAGAAAGACCTCCATCAGGGCTTC
CAGTTGCTTCTCAGTAACTGAACAAGCCAGAGAGAAAATACTCCCTTAGAGTGGCCAACAGGCTCTTTG
CAGACAAAACCTGTGAACCTCCCAACCTATAAGGAGTCTGTCTTCGATTCTATAATTCAGAGATGGA
GCAGCTCTCCTTTGCCGAAGCTGCAGAGGAGTCAAGGAAACACATAAACACGTGGGTCTCCAAACAGACT
GAAGGCAAATTCCTGAGCTGTTGTGAGGTGGTTCAGTTGATTCAGAGACCAGGCTGGTTCGTCAATG
CCTTATATTTCAAAGGAAGGTGGCATCAACATTTAACAAAGAATACACAGTGGATATGCCCTTTAAAT
AAACAAGAATGAGAAACGACTAGTGCAGATGATGTTGTGAGGACACATATAACCTTGCCCATGTGAAG
GAGGTGCAGGCGCAAGTGCTCATGATGCCATATGAAGGAATGGAGCTGAGCTTCGTGGTCTGCTCCAG
ATAATGACGGGGACCTCAGCAAGGTGGAAGCAATCTCACTTTTGAGAAGTTAACAGCCTGGACCAACCC
AGACTTTATGAAGAACACTAATGTTGAGGTTTTCTTCCAAAATTTAAACTGCAAGAGGATTATGACATG
GAGTCTGTGTTTCAGCGCTTGGGAATAGTGGATGTCTTCCAAGAGGCCAAGGCTGACTTATCAGCAATGT
CTCCAGAGAGAAACCTGTGTGTGCCAAGATTGTTCAACAAGAGCTTAGTGGAGGTCAATGAGGAAGGCAC
AGAGGCTGCAGCAGCCTCCGCTGTATAGAATACTGCTGTGCTGCTTTTGTCCCAACATTCTGTGCTGAC
CACCCCTCTTTTCTTCATCAAGCACAACAAACCAACAGCATTCTGTTCTGTGGCAGGTTCTCATCTC
CA

ACGCGTACGCGGCGGCTCGAGCAGAAACTCATCTCAGAAGAGGATCTGGCAGCAAATGATATCCTGGATT
ACAAGGATGACGACGATAAGGTTTAA



[View online »](#)

Protein Sequence: >RR215051 representing NM_001007732
 Red=Cloning site Green=Tags(s)

MNTLSEANGTFAIHLKMLCQSNPSENCYSPVSISSALAMVLLGAKGQTQVQISQALGLNKEKDLHQGF
 QLLL SNLNKPERKYSLRVANRLFADKTCCELLPTYKESCLRFYNSEMEQLSFAEAAEESRKHINTWVSKQT
 EGKIPPELLSGGSVDSETRLVNLALYFKGRWHQPFNKEYTVDMPPFKINKNEKRLVQMCCEDTYNLAHVK
 EVQAQVLMMPYEGMELSFVLLPDNDGDL SKVESNLTFEKLTAWTNPDFMKNTNVEVFLPKFKLQEDYDM
 ESVFQRLGIVDFQEAADLSAMSPERNLCVSKIYHKSLVEVNEEGTEAAAASAVIEYCCAAFVPTFCAD
 HPFLFFIKHNKNTNSILFCGRFSSP

TRTRPLEQKLISEEDLAANDILDYKDDDDKV

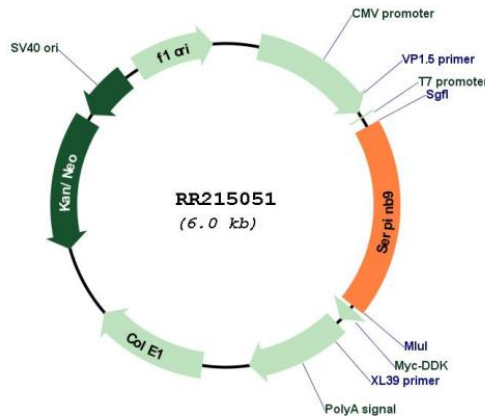
Restriction Sites:

Sgfl-MluI

Cloning Scheme:



Plasmid Map:



ACCN: NM_001007732

ORF Size:	1122 bp
OTI Disclaimer:	The molecular sequence of this clone aligns with the gene accession number as a point of reference only. However, individual transcript sequences of the same gene can differ through naturally occurring variations (e.g. polymorphisms), each with its own valid existence. This clone is substantially in agreement with the reference, but a complete review of all prevailing variants is recommended prior to use. More info
OTI Annotation:	This clone was engineered to express the complete ORF with an expression tag. Expression varies depending on the nature of the gene.
Components:	The ORF clone is ion-exchange column purified and shipped in a 2D barcoded Matrix tube containing 10ug of transfection-ready, dried plasmid DNA (reconstitute with 100 ul of water).
Reconstitution Method:	<ol style="list-style-type: none">1. Centrifuge at 5,000xg for 5min.2. Carefully open the tube and add 100ul of sterile water to dissolve the DNA.3. Close the tube and incubate for 10 minutes at room temperature.4. Briefly vortex the tube and then do a quick spin (less than 5000xg) to concentrate the liquid at the bottom.5. Store the suspended plasmid at -20°C. The DNA is stable for at least one year from date of shipping when stored at -20°C.
RefSeq:	NM_001007732.1 , NP_001007733.1
RefSeq Size:	1833 bp
RefSeq ORF:	1125 bp
Locus ID:	361241
Cytogenetics:	17p12
MW:	42.3 kDa