

Product datasheet for **RR214997**

Aldh4a1 (NM_001134698) Rat Tagged ORF Clone

Product data:

Product Type:	Expression Plasmids
Product Name:	Aldh4a1 (NM_001134698) Rat Tagged ORF Clone
Tag:	Myc-DDK
Symbol:	Aldh4a1
Synonyms:	Aldh4a1
Vector:	pCMV6-Entry (PS100001)
E. coli Selection:	Kanamycin (25 ug/mL)
Cell Selection:	Neomycin



[View online »](#)

ORF Nucleotide Sequence:

>RR214997 representing NM_001134698
 Red=Cloning site Blue=ORF Green=Tags(s)

TTTTGTAATACGACTCACTATAGGGCGGCCGGGAATTCGTCGACTGGATCCGGTACCGAGGAGATCTGCC
 GCC**GCGATCGCC**

ATGCTGCCCGCGCTTGTCTCGCCGATCCCTGCTGTCTACGCCTGGAGGGCTCTGGGCTGCGGTGGA
 AACATGCCTCCTCTGAAGGTGGCCAATGAGCCCATTTAGCGTTTACTCAGGGCAGCCCCGAACGGGA
 CGCACTGCAGAAGGCTCTGAACGACCTGAAGGACCAGACAGAAGCCATCCCCTGCGTTGTTGGGGACGAG
 GAGGTGTGGACCTCTGATGTGCGGTACCAGCTGTCGCCTTTTAACCATGGACACAAGGTGGCCAAGTTCT
 GTTATGCCGACAAGGCCCTTGCTCAACAAAGCCATCGAAGCTGCCGTGCTTGCCAGGAAAGAGTGGGACCT
 GAAGCCCGTGGCAGACCGGGCCAGATCTTCTGAAGGCGGCAGATATGCTGAGCGGGCCCCGAAGGGCT
 GAAATCCTTGCCAAGACCATGGTGGACAGGGCAAGACCGTAATCCAAGCAGAGATTGACGCCGACGCCG
 AACTCATCGACTTCTTCAGTTCAATGCCAAGTTCGCCGTGGAAGTGGAGGGGAAACAACCCATCAGCGT
 GCCACCCAGTACCAACCAGTGGTGTACCGGGGACTGGAGGGCTTCGTGGCGGCCATCTCTCCCTTCAAC
 TTCACCGCGATCGGAGGCAACCTGGCAGGCGCACCGGCCTAATGGGCAACGTGGTTCTCTGGAAGCCCA
 GTGACACTGCCATGTTGGCTAGCTATGCTGTCTACCGCATCCTCCGGGAGGCCGGCTTGCCCCAACGT
 AATCCAGTTTGTGCCAGCTGATGGGCCGACATTCGGGGACACAGTACCAGCTCAGAGCACCTCTGTGGT
 ATCAACTTCACAGGCAGTGTGCCACCTTTAAACCTGTGGAAGCAGGTGGCCAGAATCTGGACCGGT
 TCCGTACCTTCCCACGCCTGGCTGGAGAGTGTGGCGGGAAGAATTTCCATTTCTGTCACAGCTCGGCCGA
 CGTGGACAGCGTGGTGAAGCGGACGCTGCGCTCGGCCTTCAGATATGGCGGTGAGAAGTGTCTCAGCTGC
 TCGCGCTCTACGTGCCACAGTCTCTGTGGCCACAGATCAAAGGGCAGTCTGGAGGACACAGCAGGA
 TCAAAGTGGCAACCTGCAGAGGACTTTGGGACCTTCTCTCTGCAAGTATTGATGCCAAGGCCCTTCGC
 CCGCATAAAGAAGTGGCTGGAGCATGCGCGTTCTCGCCAGCCTCAGCATCCTGGCAGGCGGCCAGTGT
 AACGAGTCGTTGGTTACTTCTGTTGAGCCGTGTATCATTGAGAGCAAGGACCCACAGGAGCCCATATGA
 AGGAGGAGATCTTCGGCCCTGTGCTGACAGTGTATGTGTACCGGATGAGAAATACAGAGAGACGCTGCA
 ACTGGTCGACAGCACCACAGCTATGGCCTCACGGGGCAGTGTTCGCCAGGATAAAACAATTGTCCAA
 GAAGCCACGAGGATGCTGAGGAACGCTGCTGGCAACTTACATCAACGACAAGTCTACTGGATCTGTGG
 TGGGCCAGCAGCCCTTTGGGGCGCCCGGCCTCAGGAACCAATGACAAACCAGGAGGCCCCACTACAT
 CTTACGCTGGACCTACCCAGGTATCAAGGAGACTATAAGCCCTGGGGACTGGCGATACTCTAC
 ATGCAG

ACGCGTACGCGGCCGCTCGAGCAGAAACTCATCTCAGAAGAGGATCTGGCAGCAAATGATATCCTGGATT
 ACAAGGATGACGACGATAAGGTTTAA

Protein Sequence:

>RR214997 representing NM_001134698
 Red=Cloning site Green=Tags(s)

MLPPALLRRSLLSYAWRGSGLRWKHASSLKVANEPILAFQTGSPERDALQKALNDLKDQTEAIPCVVGDE
 EVWTSDEVRYQLSPFNHGHKVAKFCYADKALLNKAIEAAVLARKEWDLKPVADRAQIFLKAADMLSGPRRA
 EILAKTMVGQKTVIQAIEDAAELIDFFRNFNAKFAVELEGEQPI SVPPSTNHVVYRGLGEGFVAASPFN
 FTAIGGNLAGAPALMGNVVLWKPSTAMLASVAVYRILREAGLPPNVIQFVPADGPTFGDVTSSSEHLCG
 INFVTSVPTFKHLWKQVAQNLDLRFRTFPRLAGECGGKFNHVFHSSADVDSVVSGLRSAFEYGGQKCSAC
 SRLYVPQSLWPQIKGRLLLEHSRIKVGNAEDFGTFFSAVIDAKAFARIKKWLEHARSSPSLSILAGGQC
 NESVGYFVEPCIIESKDPQEPIMKEEIFGPVLTYYVYPDEKYRETLQLVDSTTSYGLTGAVFAQDKTIVQ
 EATRMLRNAAGNFYINDKSTGSVVGQPPFGGARASGTNDKPGPHYILRWTSPQVIKETHKPLGDWRYSY
 MQ

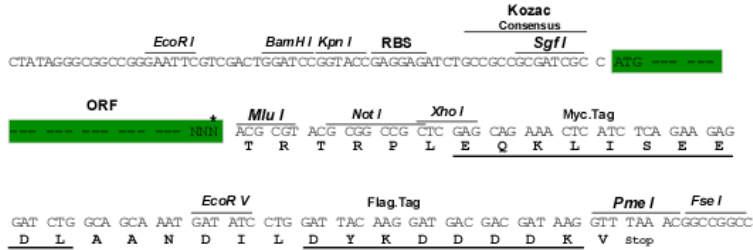
TRTRPLEQKLISEEDLAANDILDYKDDDDKV

Restriction Sites:

Sgfl-MluI

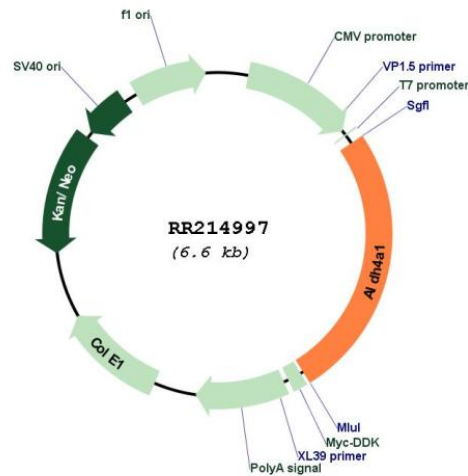
Cloning Scheme:

Cloning sites used for ORF Shutting:



* The last codon before the Stop codon of the ORF

Plasmid Map:



ACCN: NM_001134698
 ORF Size: 1686 bp

OTI Disclaimer:	The molecular sequence of this clone aligns with the gene accession number as a point of reference only. However, individual transcript sequences of the same gene can differ through naturally occurring variations (e.g. polymorphisms), each with its own valid existence. This clone is substantially in agreement with the reference, but a complete review of all prevailing variants is recommended prior to use. More info
OTI Annotation:	This clone was engineered to express the complete ORF with an expression tag. Expression varies depending on the nature of the gene.
Components:	The ORF clone is ion-exchange column purified and shipped in a 2D barcoded Matrix tube containing 10ug of transfection-ready, dried plasmid DNA (reconstitute with 100 ul of water).
Reconstitution Method:	<ol style="list-style-type: none">1. Centrifuge at 5,000xg for 5min.2. Carefully open the tube and add 100ul of sterile water to dissolve the DNA.3. Close the tube and incubate for 10 minutes at room temperature.4. Briefly vortex the tube and then do a quick spin (less than 5000xg) to concentrate the liquid at the bottom.5. Store the suspended plasmid at -20°C. The DNA is stable for at least one year from date of shipping when stored at -20°C.
RefSeq:	NM_001134698.1 , NP_001128170.1
RefSeq Size:	3171 bp
RefSeq ORF:	1689 bp
Locus ID:	641316
Cytogenetics:	5q36
MW:	61.8 kDa