

Product datasheet for **RR214956**

Slc16a1 (NM_012716) Rat Tagged ORF Clone

Product data:

Product Type:	Expression Plasmids
Product Name:	Slc16a1 (NM_012716) Rat Tagged ORF Clone
Tag:	Myc-DDK
Symbol:	Slc16a1
Synonyms:	MCT1; RATMCT1; RNMCT1
Vector:	pCMV6-Entry (PS100001)
E. coli Selection:	Kanamycin (25 ug/mL)
Cell Selection:	Neomycin



[View online »](#)

ORF Nucleotide Sequence:

>RR214956 representing NM_012716
 Red=Cloning site Blue=ORF Green=Tags(s)

TTTTGTAATACGACTCACTATAGGGCGGCCGGAATTCGTCGACTGGATCCGGTACCGAGGAGATCTGCC
 GCC**CGCATCGCC**

ATGCCACCTGCGATTGGCGGGCCAGTGGGGTACACCCCCCAGATGGAGGCTGGGGCTGGCGGTGGTAG
 TTGGAGCCTTCATTTCTATTGGCTTCTCCTATGCATTTCCAAATCCATCACTGTCTTTAAAGAGAT
 TGAAATTATATTCAGTGAACGACCAGTGAAGTGTGATGATATCGTCCATCATGCTGGCTGTCATGAT
 GCCGGAGGTCCTATCAGCAGTATCTTGGTGAATAAATATGGCAGCCGTCAGTAATGATTGCTGGTGGCT
 GCCTGTCTGGCTGGCTTATTGCAGCTTCTTTCTGTAACACGGTGCAGGAACCTTACTTCTGCATTGG
 TGTCAATTGGAGGCTTGGGCTTGGCTTCAACTGAACCCAGCTCTGACTATGATTGGCAAGTATTTCTAC
 AAGAAGCGACCATTGGCCAATGGCTGGCTATGGCAGGCAGCCAGTGTCTCTACCTGGCTCCAC
 TTAATCAGGCTTTCTTTGGTATTTTGGCTGGAGAGGAAGCTTCTAATCTTGGGGCCCTCTCTCAA
 CTGTTGTGTAGCTGGATCCCTGATGCGACCAATAGGGCCTCAGCAAGGCAAGGTGAAAACTCAAGTCC
 AAAGAGTCTCTCCAGGAAGCTGGGAAGTCTGATGCAAATACAGATCTCATTGGAGGAAGTCCAAAGGAG
 AAAAGCTGTCAGTCTTCAAACAGTTAATAAATCCTGGACTTGTCCCTGTTTACCCATAGAGGCTTTTT
 GCTGTACCTGTCTGAAAATGTGGTCATGTTCTTTGGGCTCTTACCCCTTGGTCTTTCTTAGTAATTAT
 GGTAAGAGTAAGCATTTTCCAGTGAGAAGTCAGCCTTCTCCTTTCCATTTTGGCTTTTGTGATATGG
 TGGCCAGACCGTCCATGGGTCTTGCAGCCAACACCAGTGGATCAGACCTCGAGTCCAGTACTTTTTTGC
 TGCTTCTGTTGTTGCGAATGGAGTGTGCCATTTGCTGGCACCTTGTCTACGACCTATGTTGGTCTGC
 ATCTACGCGGGAGTCTTTGGATTTGCCTTTGGTTGGCTCAGCTCCGATTTGTTGAGACGTTGATGGAC
 TCGTTGGACCCAGAGGTTCTCCAGTGTGGGCTTGGTACCATTGTGGAATGTTGCTCTGCTCCTCCT
 GGGACCACCACTTTTAGGCCGCCTCAATGACATGTATGGAGACTACAAATACACATACTGGGCTTGTGGC
 GTGATCCTCATCATCGCAGGCTCTACCTTCTATTGGTATGGGCATCAATTATCGACTGTGGCCAAAG
 AACAGAAAGCGGAGGAAAAGAAGAGGGACGGTAAAGAGGACGAGACCAGCACTGATGTTGATGAGAAGCC
 CAAGAAGACAATGAAAGAAACACAGTCGCCAGCGCCACTGCAGAACAGCTCTGGAGACCCCGGAGGAG
 GAGAGCCAGTC

ACGCGTACGCGGCCGCTCGAGCAGAAACTCATCTCAGAAGAGGATCTGGCAGCAAATGATATCTGGATT
 ACAAGGATGACGACGATAAGGTTTAA

Protein Sequence:

>RR214956 representing NM_012716
 Red=Cloning site Green=Tags(s)

MPPAIGGPVGYTPPDGGWGWAVVVGAFISIGFSYAFPKSITVFFKEIEIIFSATTSEVSWISSIMLAVMY
 AGGPISSILVNKYGSRPVMIAAGCLSGCGLIAASFNTVQELYFCIGVIGGLGLAFNLPALTMIGKYFY
 KKRPLANGLAMAGSPVFLSTLAPLNQAFIFGWRGSFLILGLLLNCVAGSLMRPIGPQQGKVEKLKS
 KESLQEAGKSDANTDLIGGSPKGEKLSVFQTVNKFLDLSLFTHRGFLLYLSGNVVMFFGLFTPLVFLSNY
 GKSKHFSSEKSAFLLSILAFVDMVARPSMGLAANTRWIRPRVQYFFAASVVANGVCHLLAPLSTTYVGF
 IYAGVGFAGWLVSSVLFETLMDLVGPQRFSSAVGLVTIVECCPVLLGPPLLGRLLNDMYGDYKYTYWACG
 VILIIAGLYLFI GMGINYRLVAKEQKAEEKKRDGKEDETSTDVDEKPKKTMKETQSPAPLQNSSGDPAAE
 ESPV

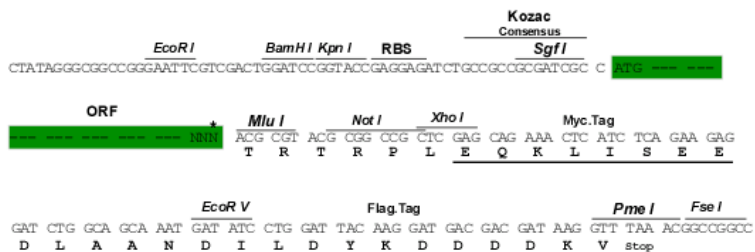
TRTRPLEQKLISEEDLAANDILDYKDDDDKV

Restriction Sites:

Sgfl-MluI

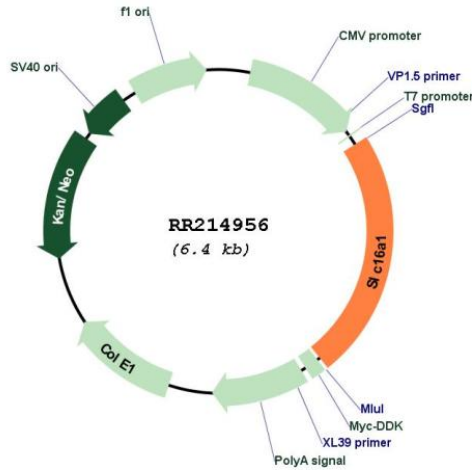
Cloning Scheme:

Cloning sites used for ORF Shutting:



* The last codon before the Stop codon of the ORF

Plasmid Map:



ACCN: NM_012716

ORF Size: 1482 bp

OTI Disclaimer: The molecular sequence of this clone aligns with the gene accession number as a point of reference only. However, individual transcript sequences of the same gene can differ through naturally occurring variations (e.g. polymorphisms), each with its own valid existence. This clone is substantially in agreement with the reference, but a complete review of all prevailing variants is recommended prior to use. [More info](#)

OTI Annotation: This clone was engineered to express the complete ORF with an expression tag. Expression varies depending on the nature of the gene.

Components: The ORF clone is ion-exchange column purified and shipped in a 2D barcoded Matrix tube containing 10ug of transfection-ready, dried plasmid DNA (reconstitute with 100 ul of water).

Reconstitution Method:

1. Centrifuge at 5,000xg for 5min.
2. Carefully open the tube and add 100ul of sterile water to dissolve the DNA.
3. Close the tube and incubate for 10 minutes at room temperature.
4. Briefly vortex the tube and then do a quick spin (less than 5000xg) to concentrate the liquid at the bottom.
5. Store the suspended plasmid at -20°C. The DNA is stable for at least one year from date of shipping when stored at -20°C.

RefSeq: [NM_012716.2](#), [NP_036848.1](#)

RefSeq Size: 2517 bp

RefSeq ORF: 1485 bp

Locus ID: 25027

UniProt ID: [P53987](#)

Cytogenetics: 2q34

MW: 53.2 kDa

Gene Summary: transports lactic acid and other monocarboxylic acids [RGD, Feb 2006]