

Product datasheet for **RR214952**

Sgk1 (NM_019232) Rat Tagged ORF Clone

Product data:

Product Type:	Expression Plasmids
Product Name:	Sgk1 (NM_019232) Rat Tagged ORF Clone
Tag:	Myc-DDK
Symbol:	Sgk1
Synonyms:	Sgk
Mammalian Cell Selection:	Neomycin
Vector:	pCMV6-Entry (PS100001)
E. coli Selection:	Kanamycin (25 ug/mL)



[View online »](#)

ORF Nucleotide Sequence:

>RR214952 representing NM_019232
 Red=Cloning site Blue=ORF Green=Tags(s)

TTTTGTAATACGACTCACTATAGGGCGGCCGGAATTCGTCGACTGGATCCGGTACCGAGGAGATCTGCC
 GCC**CGATCGCC**

ATGACCGTCAAACCCGAGGCTGCTCGAAGTACCCTCACCTACTCCAGAATGAGGGGAATGGTAGCAATCC
 TCATCGCTTTCATGAAACAGAGAAGGATGGGCCTGAACGATTTTATTGAGAAGCTTGCCAACAACCTCCTA
 TGCATGCAAACACCCTGAAGTTCATCCTATTTGAAAATCTCCCAACCTCAGGAGCCCGAACTTATGAAC
 GCCAACCCCTCACCTCCTCAAGTCCCTCTCAACAAATCAACCTGGGTCCATCCTCAAATCCCCACGCCA
 AACCCCTGACTTCCACTTCTTGAAAGTGATCGGAAAAGGCAGTTTTGGAAAGGTTCTTCTAGCAAGGCA
 CAAGGCAGAAGAAGCATTCTATGCCGTCAAAGTTTTGCAGAAGAAAGCCATCTTGAAGAAGAAGGAGGAG
 AAGCATATTATGTCAGAGCGCAATGTTCTGTTGAAGAATGTGAAGCACCCCTTCTGGTGGGCTTCACT
 TCTCTTCCAGACTGCTGACAACTCTACTTCGTCCTAGACTACATTAATGGCGGAGAGCTGTTCTACCA
 TCTCCAGAGGGAGCGCTGCTTCCGGAACCCCGTCTCGCTTCTACGCAGCTGAAATAGCCAGTGCCTTG
 GGTATATGCACTCCCTAAACATCGTTTATCGAGACTTAAAACCAGAGAAATTTCTCTAGACTCACAGG
 GACACATCGTCTCACTGACTTTGGGCTCTGCAAGGAGAACATCGAGCACAATGGGACAACGTCCACCTT
 CTGTGGCACGCCTGAGTATCTCGCTCCTGAGGTTCTCCATAAGCAGCCGTACGACCGGACAGTGGACTGG
 TGGTGCCTCGGGGCTGTCTTGTATGAGATGCTCTATGGCCTGCCTCCGTTCTACAGCCGGAACACAGCCG
 AGATGTATGACAATTTCTGAACAAGCCTCTCCAGCTGAAACCAATATCACCAACTCAGCAAGGCACCT
 GCTGGAGGGCCTCCTGCAGAAGGACCGGACCAAGAGGCTGGGTGCCAAGGATGACTTTATGGAGATTAAG
 AGTCATATTTCTCTCTTTGATTAAGTGGGATGATCTCATTAAAGAAGATCACGCCCCCATTTAACCC
 CAAATGTGAGCGGGCCAGTGACCTTCGGCACTTTGATCCCGAGTTTACTGAGGAGCCGGTCCCCAGCTC
 CATCGGGCGATCCCTGACAGCATCCTTGTACAGCCAGTGTGAAGAAGCCGCGGAAGCCTTCTTGGC
 TTCTCCTATGCCCTCCTATGGACTCCTTCCTC

ACGCGTACGCGGCCGCTCGAGCAGAACTCATCTCAGAAGAGGATCTGGCAGCAAATGATATCCTGGATT
 ACAAGGATGACGACGATAAGGTTTAA

Protein Sequence:

>RR214952 representing NM_019232
 Red=Cloning site Green=Tags(s)

MTVKTEAARSTLTYSRMRGMVAIIIAFMKQRRMGLNDFIQKLANNSYACKHPEVQSYLKISQPQPELMN
 ANPSPPPSPSQIINLGPSSNPHAKPSDFHFLKVIKGSFGKVLARHKAEEAFYAVKVLQKKAIIKKKEE
 KHIMSERNVLLKNVKHPFLVGLHFSFQTADKLYFVLDYINGGELFYHLQRERCFLEPRARFYAAEIASAL
 GYLHSLNIVYRDLKPENILLDSQGHIVLTDGLCKENIEHNGTTSTFCGTPEYLAPEVLHKQPYDRTVDW
 WCLGAVLYEMLYGLPPFYSRNTAEMYDNILNKPLQLKPNITNSARHLEGLLQKDRTKRLGAKDDFMEIK
 SHIFFSLINWDDLINKKIITPPFNPNVSGPSDLRHFDFEFTEEPVPSISGRSPDSILVTASVKEAAEAFGL
 FSYAPPMDNFL

TRTRPLEQKLISEEDLAANDILDYKDDDDKV

Restriction Sites:

SgfI-MluI

Cloning Scheme:

ACCN: NM_019232

ORF Size: 1293 bp

OTI Disclaimer: The molecular sequence of this clone aligns with the gene accession number as a point of reference only. However, individual transcript sequences of the same gene can differ through naturally occurring variations (e.g. polymorphisms), each with its own valid existence. This clone is substantially in agreement with the reference, but a complete review of all prevailing variants is recommended prior to use. [More info](#)

OTI Annotation: This clone was engineered to express the complete ORF with an expression tag. Expression varies depending on the nature of the gene.

Components: The ORF clone is ion-exchange column purified and shipped in a 2D barcoded Matrix tube containing 10ug of transfection-ready, dried plasmid DNA (reconstitute with 100 ul of water).

Reconstitution Method:

1. Centrifuge at 5,000xg for 5min.
2. Carefully open the tube and add 100ul of sterile water to dissolve the DNA.
3. Close the tube and incubate for 10 minutes at room temperature.
4. Briefly vortex the tube and then do a quick spin (less than 5000xg) to concentrate the liquid at the bottom.
5. Store the suspended plasmid at -20°C. The DNA is stable for at least one year from date of shipping when stored at -20°C.

RefSeq: [NM_019232.3](#), [NP_062105.2](#)
RefSeq Size: 2467 bp

RefSeq ORF: 1296 bp

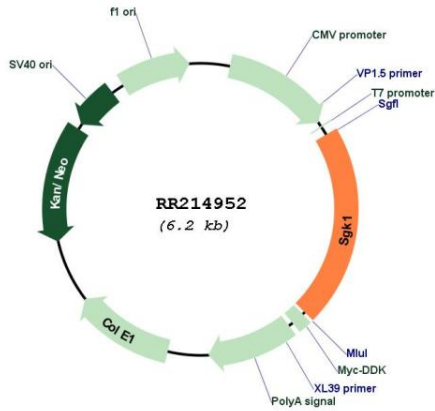
Locus ID: 29517

Cytogenetics: 1p12

MW: 49 kDa

Gene Summary: may play a role in memory consolidation and spatial learning; may mediate aldosterone-induced signaling [RGD, Feb 2006]

Product images:



Circular map for RR214952