

## Product datasheet for **RR214949**

### **Klf4 (NM\_053713) Rat Tagged ORF Clone**

#### **Product data:**

Product Type:	Expression Plasmids
Product Name:	Klf4 (NM_053713) Rat Tagged ORF Clone
Tag:	Myc-DDK
Symbol:	Klf4
Synonyms:	GKLF
Mammalian Cell Selection:	Neomycin
Vector:	pCMV6-Entry (PS100001)
E. coli Selection:	Kanamycin (25 ug/mL)



[View online »](#)

**ORF Nucleotide Sequence:**

>RR214949 representing NM\_053713  
 Red=Cloning site Blue=ORF Green=Tags(s)

TTTTGTAATACGACTCACTATAGGGCGGCCGGAATTCGTCGACTGGATCCGGTACCGAGGAGATCTGCC  
 GCC**CGCATCGCC**

ATGAGGCAGCCACCTGGCGAGTCTGACATGGCTGTGACGACGCTCTGCTCCCGTCTTCTCCACGTTCCG  
 CGTCCGGCCCGCGGGAAGGGAGAAGACTGCGTCCAGCAGGTGCCCGACTAACCGTTGGCGAGAGGA  
 ACTCTCTCACATGAAGCGACTTCCCCACTTCCCGGCCGCCCTACGACCTGGCGGCGACGGTGGCCACA  
 GACCTGGAAAGTGGTGGAGCTGGTGCAGCTTGCAGCAGTAACAACCCGGCCCTACCCCGAGGGAGACCG  
 AGGAGTTCAACGATCTCCTGGACCTAGACTTTATCCTTTCCAACCTCGCTATCCCACCAGGAATCGGTGGC  
 CGCCACCGTGACCACCTCGGCGTCAGCTTCATCCTCGTCTTCCCGAGCTAGCAGCGGCCCTGCCAGCGCG  
 CCCTCCACCTGCAGCTTCAGCTATCCGATCCGGGCCGGGGTACCCGGGCGTGGCTGCGGGCAACACAG  
 GTGGAGGGCTCCTCTACAGCCGAGAATCTGCGCCACCTCCACGGCCCCCTTCAACCTGGCGGACATCAA  
 TGACGTGAGCCCCCTCGGCGGCTTCGTGGCTGAGCTCCTGCGGCCGGAGTTGGACCCAGTATACATTCCG  
 CCACAGCAGCCTCAGCCGCCAGGTGGCGGGCTGATGGCAAGTTTGTGCTGAAGGCGTCTCTGAGCACCC  
 CTGGCAGCGAGTACACCAGCCCTTCGGTCATCAGTGTAGCAAAGGAAGCCAGACGGCAGCCACCCCTGT  
 GGTAGTGGCGCCCTACAGCGGTGGCCCGCCGCGTATGTGCCCAAGATTAAGCAAGAGGCGCTCCCGTCC  
 TGCACGGTCAGCCGGTCCCTAGAGGCCACTTGAGCGCTGGACCCAGCTCAGCAACGGCCACAGGCCCA  
 ACACACACGACTTCCCCCTGGGGCGGACGCTCCCACCAGGACTACCCCTACACTGAGTCCCAGGAACT  
 GCTGAACAGCAGGACTGTACCCTGGCCTGCCTTCCCCAGGATTCCATCCCATCCGGGGCCAGC  
 TACCCTCCTTCTGCCAGACCAGATGCAGTCGCAAGTCCCCTCTCTCCATTATCAAGAGCTCATGCCAC  
 CGGGACCTGTGACTATGCAGGCTGTGGCAAAACCTATACGAAGAGTTCTCATCTCAAGGCACACCTG  
 CGAACTCACACAGGCGAGAAACCTTACCCTGTGACTGGGACGGCTGTGGGTGAAATTCGCCCGCTCAG  
 ATGAACTGACCAGGCACTACCGCAAACACCGGGCACCGGCCCTTTCAGTGCCAGAAGTGCACAGGGC  
 CTTTTCCAGTCCGACCACCTTGCCTTACACATGAAGAGGCATTT

**ACGCGT**ACGCGGCCGCTCGAGCAGAACTCATCTCAGAAGAGGATCTGGCAGCAATGATATCCTGGATT  
 ACAAGGATGACGACGATAAGGTTTAA

**Protein Sequence:**

>RR214949 representing NM\_053713  
 Red=Cloning site Green=Tags(s)

MRQPPGESDMAVSDALLPSFSTFASGPAGREKTLRPAGAPTNRWREELSHMKRLPPLPGRPYDLAATVAT  
 DLESGGAGAACSSNNPALPRRETEEFNDLLDLDFILSNLSHQESVAATVTTASASSSSSPASSGPASA  
 PSTCSFSYPIRAGDGPVAAGNTGGLLYSRESAPPPTAPFNLADINDVSPSGGFVAELLRPELDPVYIP  
 PQQPQPPGGGLMGKFLKASLSTPGSEYTPSVISVSKGSPDGSHPVVVAPYSGGPPRMCPKIKQEAVPS  
 CTVSRSLAEHL SAGPQLSNGHRPNTHDFPLGRQLPTRTPTLSPEELLNSRDCHPLPLPPGFHPHPGS  
 YPPFLPDQM QSQVPSLHYQELMPPGSCLPEEPKPKRGRRSWPRKRTATHTCDYAGCGKTYTKSSHLKAHL  
 RHTHGEKPYHCDWDGCGWKFARSDDELTRHYRKHTGHRPFQCQKCDRAF SRSDHLALHMKRHF

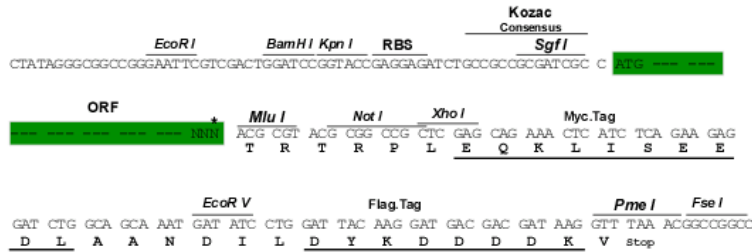
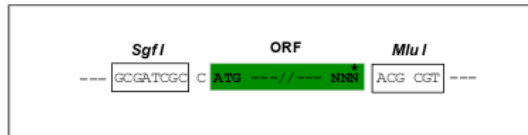
**TR**TRPLEQKLISEEDLAANDILDYKDDDDKV

**Restriction Sites:**

SgfI-MluI

**Cloning Scheme:**

Cloning sites used for ORF Shutting:



\* The last codon before the Stop codon of the ORF

**ACCN:** NM\_053713

**ORF Size:** 1446 bp

**OTI Disclaimer:** The molecular sequence of this clone aligns with the gene accession number as a point of reference only. However, individual transcript sequences of the same gene can differ through naturally occurring variations (e.g. polymorphisms), each with its own valid existence. This clone is substantially in agreement with the reference, but a complete review of all prevailing variants is recommended prior to use. [More info](#)

**OTI Annotation:** This clone was engineered to express the complete ORF with an expression tag. Expression varies depending on the nature of the gene.

**Components:** The ORF clone is ion-exchange column purified and shipped in a 2D barcoded Matrix tube containing 10ug of transfection-ready, dried plasmid DNA (reconstitute with 100 ul of water).

**Reconstitution Method:**

1. Centrifuge at 5,000xg for 5min.
2. Carefully open the tube and add 100ul of sterile water to dissolve the DNA.
3. Close the tube and incubate for 10 minutes at room temperature.
4. Briefly vortex the tube and then do a quick spin (less than 5000xg) to concentrate the liquid at the bottom.
5. Store the suspended plasmid at -20°C. The DNA is stable for at least one year from date of shipping when stored at -20°C.

**RefSeq:** [NM\\_053713.1](#), [NP\\_446165.1](#)
**RefSeq Size:** 2393 bp

**RefSeq ORF:** 1449 bp

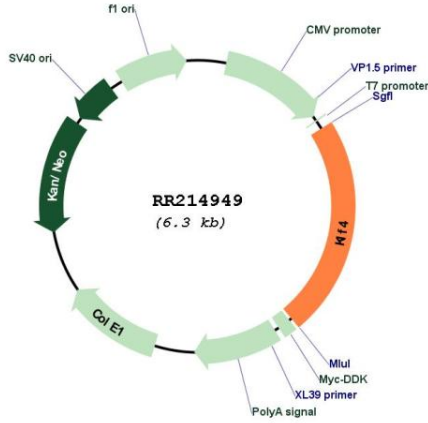
**Locus ID:** 114505

**Cytogenetics:** 5q24

**MW:** 51.7 kDa

**Gene Summary:** a transcription factor that works with Sp1 to activate the Laminin gamma1 chain gene [RGD, Feb 2006]

**Product images:**



Circular map for RR214949