

## Product datasheet for **RR214935**

### **Pou5f1 (NM\_001009178) Rat Tagged ORF Clone**

#### Product data:

Product Type:	Expression Plasmids
Product Name:	Pou5f1 (NM_001009178) Rat Tagged ORF Clone
Tag:	Myc-DDK
Symbol:	Pou5f1
Mammalian Cell Selection:	Neomycin
Vector:	pCMV6-Entry (PS100001)
E. coli Selection:	Kanamycin (25 ug/mL)
ORF Nucleotide Sequence:	>RR214935 representing NM_001009178 Red=Cloning site Blue=ORF Green=Tags(s)

TTTTGTAATACGACTCACTATAGGGCGGCCGGGAATTCGTCGACTGGATCCGGTACCGAGGAGATCTGCCGCC**CGATCGCC**

ATGGCTGGACACCTGGCTTCAGACTTCGCCTTCTACCCCCACCTGGTGGGGGTGATGGGTGAGCAGGGC  
TGGAGCCGGGCTGGGTGGACCCTCGAACCTGGCTAAGCTTCCAGGGGCCTCAAGTGGGCCTGGAATCGG  
ACCAGGTTCCAGAGGTGCTGGGGATCTCCCCGTGTCCCCAGCATAACGAGTTCTGTGGAGGGATGGCATA  
TGTGGACCTCAGGTTGGACTGGGCCTAGTCCCCAAGTTGGCGTGGAGACTCTGCAGCCCCAGGGCCAGG  
CAGGAGCACGAGTGGAGAGCAACTCGGAGGGAGCCTCCTCTGGGCCCTGTACTGCCGCCCCAGCGCCGT  
GAAGTTGGAGAAGGTGGAACCTAGTCCCGAGGAGTCCCAGGATATGAAAGCCCTGCAGAAGGAGCTAGAG  
CAGTTTGCCAAGCTGCTGAAACAGAAGAGGATCACCTTGGGGTACACCCAGGCCGACGTGGGGCTCACCC  
TGGCGTCTCTTTGAAAGGTGTTAGCCAGACAACCATCTGCCGCTTCGAGGCCCTGCAGCTCAGCCT  
TAAGAACATGTGTAAGCTGCGGCCCTGCTGGAGAAGTGGGTGGAGGAAGCTGACAACAACGAGAACCTT  
CAGGAGATATGCAATCGGAGACCCTGGTGCAGGCCCGGAAGAGAAAGCGGACTAGCATTGAGAACCCTG  
TGAGGTGGAACCTGGAGAACATGTTTCTGCAGTCCCCAAGCCCTCCTGCAGCAGATCACTAGCATTGC  
CAAGCAGCTTGGGCTGGAGAGGGATGTGGTTCGAGTGTGGTTCTGTAACCGGCCCCAGAAGGGGAAAAGA  
TCGAGCATTGAATATTCCAACGAGAAGAGTATGAGGCCGGGGAAACCTTTCCAGGGGGGGCTGTGT  
CCTTTCCTCTGCCCCAGGCCCCCACTTTGGTGTCTCCAGGCTATGGGAGCCCCATTTACCACACTCTA  
CTCGGTCCCTTTCTGAGGGCGAGGCCTTTCCTCTGTTCTGTCACTGCTCTGGGCTCTCCATGCAT  
TCAAACCAAAC

**ACGCGT**ACGCGGCCGCTCGAGCAGAAACTCATCTCAGAAGAGGATCTGGCAGCAAATGATATCCTGGATT  
ACAAGGATGACGACGATAAGGTTTAA



[View online »](#)

**Protein Sequence:** >RR214935 representing NM\_001009178  
Red=Cloning site Green=Tags(s)

MAGHLASDFAFSPPPGGGDSAGLEPGWVDPRTWLSFQGPSPGPGI GPGSEVLGISPCPPAYEFCGGMAY  
 CGPQVGLGLVPQVGVETLQPEGQAGARVESNSEGASSGPCTARPSAVKLEKVEPSPEESQDMKALQKELE  
 QF AKLLKQKRITLGYTQADVGLTLGVLFGKVFSSQTTICRFEALQLSLKNMCKLRPLLEKWVEEADNNENL  
 QEICKSETLVQARKRKRSTIENRVRWNLENMFLQCPKPSLQQITSIKQLGLERDVVRVWFENRRQKGR  
 SSIEYSQREEYEAGKPFPPGGAVSFPLPPGPHFGAPGYGSPHFTTLYSVPFPEGEAFPSVPVTALGSPMH  
 SNSN

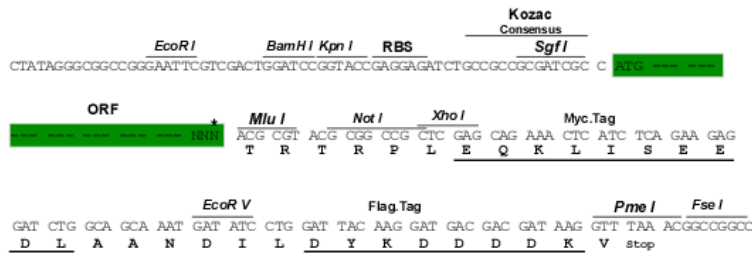
TRTRPLEQKLISEEDLAANDILDYKDDDDKV

**Chromatograms:** [https://cdn.origene.com/chromatograms/ja1453\\_b08.zip](https://cdn.origene.com/chromatograms/ja1453_b08.zip)

**Restriction Sites:** Sgfl-MluI

**Cloning Scheme:**

Cloning sites used for ORF Shuttling:



\* The last codon before the Stop codon of the ORF

**ACCN:** NM\_001009178

**ORF Size:** 1056 bp

**OTI Disclaimer:** The molecular sequence of this clone aligns with the gene accession number as a point of reference only. However, individual transcript sequences of the same gene can differ through naturally occurring variations (e.g. polymorphisms), each with its own valid existence. This clone is substantially in agreement with the reference, but a complete review of all prevailing variants is recommended prior to use. [More info](#)

**OTI Annotation:** This clone was engineered to express the complete ORF with an expression tag. Expression varies depending on the nature of the gene.

**Components:** The ORF clone is ion-exchange column purified and shipped in a 2D barcoded Matrix tube containing 10ug of transfection-ready, dried plasmid DNA (reconstitute with 100 ul of water).

**Reconstitution Method:**

1. Centrifuge at 5,000xg for 5min.
2. Carefully open the tube and add 100ul of sterile water to dissolve the DNA.
3. Close the tube and incubate for 10 minutes at room temperature.
4. Briefly vortex the tube and then do a quick spin (less than 5000xg) to concentrate the liquid at the bottom.
5. Store the suspended plasmid at -20°C. The DNA is stable for at least one year from date of shipping when stored at -20°C.

**RefSeq:** [NM\\_001009178.2](#), [NP\\_001009178.1](#)

**RefSeq Size:** 1388 bp

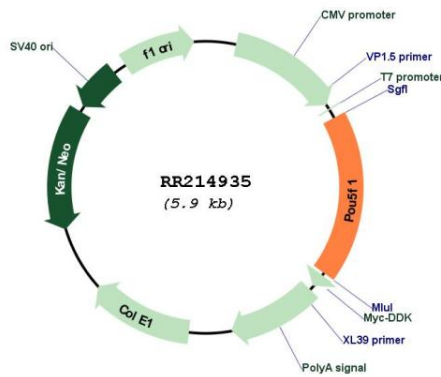
**RefSeq ORF:** 1059 bp

**Locus ID:** 294562

**Cytogenetics:** 20p12

**MW:** 38.1 kDa

**Product images:**



Circular map for RR214935