

Product datasheet for **RR214908**

Col1a2 (NM_053356) Rat Tagged ORF Clone

Product data:

Product Type: Expression Plasmids
Product Name: Col1a2 (NM_053356) Rat Tagged ORF Clone
Tag: Myc-DDK
Symbol: Col1a2
Vector: pCMV6-Entry (PS100001)
E. coli Selection: Kanamycin (25 ug/mL)
Cell Selection: Neomycin
ORF Nucleotide Sequence: >RR214908 representing NM_053356
Red=Cloning site Blue=ORF Green=Tags(s)

TTTTGTAATACGACTCACTATAGGGCGGCCGGGAATTCGTCGACTGGATCCGGTACCGAGGAGATCTGCC
GCC**CGATCGCC**

ATGCTCAGCTTTGTGGATACGCGGACTCTGTTGCTGCTTGCAGTAACGTCGTGCCTAGCAACATGCCAAT
CTTTACAATGGGATCTGTACGGAAGGGCCCACTGGAGACAGAGACCGCGTGGACAAAGGGGCCAGC
AGGTCCCCGAGGCAGAGATGGTGTGATGGTCCCGTTGGCCCTCTGGTCCCCCTGGCCCTGGCCCC
CCTGGTCCCCCTGGCCCCCTGGTCTTACTGGAACTTTGCTGCTCAGTATTCTGACAAAGGAGTTTCAG
CTGGCCCCGACCAATGGGCTTAATGGGACCCAGAGGCCCTCTGGTGTGTCGGAGCCCCCTGGCCCTCA
AGGTTTCCAAGGACCTGCTGGTGAAGCTGGTGAAGCCTGGAAACCGGTCTGCAGGTTCCCGTGGGCCA
GCTGGCCCTCTGGCAAGGCCGGTGAAGATGGTCAACCCTGGAAAACCTGGAAGACCTGGCAGAGAGGAG
TCGTTGGGCCACAAGGTGCTCGTGGTTTCCCTGGGACTCTGGACTTCTGGCTTCAAAGGCATTGAGG
ACACAACGGTCTGGATGGATTGAAAGGACAGCCTGGTCCCAGGGTGTGAAGGTGAACCCGGTGGCCCT
GGAGAGAATGGAACCCAGGTCAAGCAGGAGCCCAGGGCTTCTGGTGAAGAGGGCGTGTGCGAGCTC
CTGGTCCAGCTGGTGGCCGTGGCAGTGTGGCAGTGTGGCCCCGTCGGCCCTGCTGGTCCCATTGGGTC
TGCTGGTCTCTGGTTTCCAGGTGCTCTGGTCCCAAGGGTGAACCTGGGCCTGTTGGTAACCCCTGGC
CCTGCTGGTCTGCTGGTCCCCGTGGTGAAGCGGGTCTTCCGGGTCTTCTGGCCCCGTTGGACCTCCTG
GCAACCCCTGGAGCAAATGGCCTCACTGGTGCAAGGGAGCCACTGGACTCCCTGGTGTGCTGGGGCTCC
TGGTCTCCCCGGTCCCCGTGGTATTCTGGCCCCGTTGGTGTGCTGGTCCACTGGTCCCAGAGGACTT
GTTGGTGAACCTGGTCTGCTGGCTCCAAGGAGAGACTGGTAACAAGGGTGAGCCTGGCTCTGCTGGAG
CCCAAGGTCTCTGGTCCCAGCGGTGAAGAAGGAAAGAGAGGGTCCCCTGGAGAGCCTGGATCTGCTGG
TCCTGCAGGGCCTCCAGGGCTGAGAGGCAGCCCTGGTTCTCGAGGTCTTCTGGAGCTGATGGCAGAGCT
GGTGTGATGGGCCCTCTGGCAATCGTGTTCACTGGCCCTGCTGGAGTCCGAGGTCTAATGGAGATG
CCGGTCGCCCTGGAGAACCTGGTCTCATGGGACCCAGAGGTCTTCCCGGTCTCCTGGAAAATGTTGGCCC
AGCTGGTAAAGAAGGCCCTGTGGGTCTCCTGGCATCGATGGCAGACCTGGCCCAATTGGCCAGCTGGA
CCAAGAGGTGAAGCTGGCAACATCGGATTCCCTGGACCCAAAGGCCCTCTGGTGTGCTGGCAACCTG
GTGAGAAAAGGCCATCCCGGTCTCGTGGTGTGCTGGGGAGCTCCAGGTCCCAGCGCAACAATGGTGTCA
GGGCCCTCTGGACCTCAGGGTGTCAAGGTGGCAAAGGTGAACAGGGCCCTGCTGGTCTCCAGGCTTC



CAGGGTCTCCCGGTCCCTCTGGTACCGCTGGAGAAGTTGGCAAGCCGGGAGAAAGGGTCTTCCCGGTG
AATTCCGGTCTCCCTGGTCTGCTGGTCCAAGAGGAGAACGTGGTCCCCAGGTGAGAGTGGAGCTGCTGG
TCCTTCTGGTCTATTGGAATCCGAGGTCCCTCTGGAGCCCCAGGGCCTGATGGGAACAAGGGTGAAGCT
GGTGCAGTCGGTCTCCAGGCTCTGCTGGTGCCTCTGGTCTGGTGGCTTCCAGGAGAGAGGGGTGCTG
CTGGCATACTGGAGGCAAAGGAGAAAAGGGTAAACTGGTCTCAGAGGTGAAATCGGCAACCCTGGTAG
AGATGGTCTCGAGGTCTCTGGTCTATAGGTGCCCTGGTCCCGCTGGAGCCTCAGGTGACCGGGGC
GAAGTGGTCTGCTGGTCTTCTGGCCCTGCTGGTCTCGAGGTAGCCCTGGTGAACGTGGTGAAGTTG
GTCCTGCTGGCCCAATGGATTTGCTGGTCTGCTGGTTCTGCTGGCCAACCTGGTCTAAAGGAGAAAA
GGGAACCAAAGGGCTAAGGGAGAAAATGGCATCGTTGGTCCAACCGGACCTGTCGGAGCTGCTGGCCCA
TCTGGTCTAATGGCCACCTGGCCCTGCTGGAAGTCGTGGTATGGAGGGCCCCCTGGTATGACTGGCT
TCCCTGGTCTGCTGGACGGACTGGTCCCCCGGACCCAGTGGTATTACTGGCCCCCTGGTCCCCCTGG
TGCTGCTGTAAGAAGGTATTCGTGGTCCCGTGGTACCAAGGTCCAGTTGGCCGAACTGGAGAAATA
GGTGCATCTGGTCCCCCTGGATTTGCTGGCGAGAAGGGTCTTCTGGAGAACCTGGTACCACAGGACCCC
CTGGCACTGCAGGTCTCAGGGTCTTCTGGTCTCCCGTATTCTGGTCTCCCTGGCTCTCGAGGTGA
ACGTGGCCAGCCAGGTATTGCTGGTCTCTGGGTAACTGGTCTCTGGCATTGCAGGCCCTCCTGGG
GCCCGTGGTCCCCCTGGTCTGTGGGCAGTCTGGAGTTAATGGTGGCCCTGGTGAAGCCGGTCTGATG
GTAACCCTGGCAGTGATGGTCCCCAGGTCTGATGGTCAACCCGGACACAAGGGAGAGCGTGGTTACCC
TGGCAACATTGGTCCCCTGGTCTGACAGTCTCCTGGTCTCATGGTTCTGTGGGTCCTGCTGGGAAA
CATGGAACCGTGGTGGAGCTGGTCTGCTGGTCTGTTGGTCCCGTGGTGGTCTGCTGGTCCAAGAGGT
CTAGTGGCCCTCAAGGTATTCGAGGTGACAAGGGAGAGCTGGTGAACAAGGGCCAGAGGTCTTCTGG
CTTAAAAGGACACAATGGATTACAGGGTCTTCTGGTCTGCTGGGTCATGGTGAACAAGGAGTCTCT
GGTCCCGTGGTCTGCTGGTCCCAGGGTCTGCTGGTCTTCTGGCCCATTTGGCAAAGATGGTAGAT
CTGGACATCCTGGACAGTCGGTCTGCTGGCGTTCGTGGTCTCAGGGTAGCCAAGGTCCCGCTGGTCC
CCCTGGTCCCCCTGGGCTCCTGGGCTCCTGGTGTGAGCGGAGGAGGCTATGACTTTGGTTTCGAAGGA
GGTTCTACAGGGCTGACCAGCCTCGCTCACAGCCTTCACTCAGACCCAAGGACTATGAAGTTGATGCAA
CTCTGAAATCTCTCAATAACCAAATCGAGACCCTTCTCACTCCTGAAGGCTCTAGAAAGAACCCTGCCCG
CACATGCCGTGACTTAAGACTCAGCCACCCAGAGTGGAAGAGCGATTACTACTGGATTGACCCTAACCAA
GGATGCACTATGGATGCCATCAAAGTGTACTGCGATTTCTACTGGTGAACCTGCATCCAGGCCAAC
CTGTCAACACCCAGCCAAGAATGCATACAGCCGTGCCAGGCCAACAAAGCATGTCTGGTTAGGAGAGAC
CATCAATGGTGGCAGCCAGTTTGAATACAACGCAGAAGGGGTGCTCTCAAGGAAATGGCAACTCAGCTC
GCCTTCATGCGCCTGCTAGCCAACCGTCTTCTCAGAACATCACCTACCCTGCAAGAACAGCATTGCGT
ACCTGGACGAGGAGACAGGCCCTGAATAAGGCTGTCATTCTGCAGGGCTCCAACGACGTGCAACTTGT
TGCTGAGGGCAACAGCAGATTACCTACACTGTCTTGTGATGGCTGCTCCAAAAGACAAATGAATGG
GACAAGACAGTCAATTGAATACAAAACGAATAAGCCATCTCGCCTGCCATTCTTGACATTGCACCTCTGG
ACATCGGTGGTACTAACCAAGAATTCGTGTGGAGGTTGGCCCTGTCTGTTTCAA

ACGGTACGCGGCCGCTCGAGCAGAACTCATCTCAGAAGAGGATCTGGCAGCAATGATATCCTGGATT
ACAAGGATGACGACGATAAGGTTTAA

Protein Sequence: >RR214908 representing NM_053356
 Red=Cloning site Green=Tags(s)

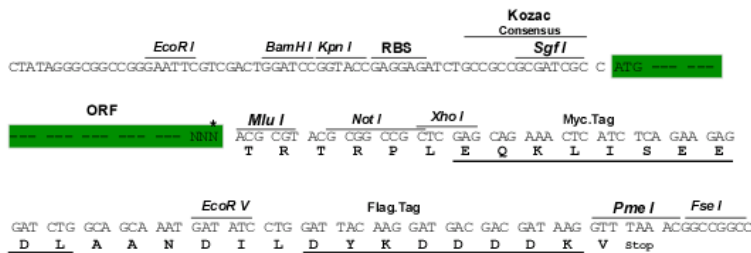
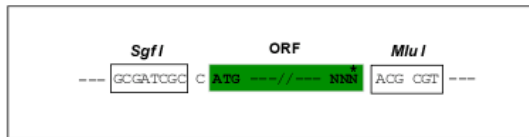
MLSFVDTRLLLLAVTSLATCQSLQMGSVRKPTGDRGPRGQRGPAGPRGRDGDVGPVGGPPGAPGP
 PGPPGPPGLTGNFAAQYSDKGVSAAGPMGLMGRGPPGAVGAPGQGFQGPAGEPEPGQTGPAGSRGP
 AGPPGKAGEDGHPGKPRPGERGVVGPQGARGFPGTGPLPGFKGIRGHNLGDGLKQPGAQGVKGEFGAP
 GENGTPGQAGARGLPGERGRVGPAGPAGARGSDGSVGPVGPAGPIGSAGPPGFPAGPAGPKGELGPVGNPG
 PAGPAGPRGEAGLPGLSGPVGPPNPGANGLTGAKGATGLPGVAGAPGLPGPRGIPGPVGAAGATGPRGL
 VGEPPAGSKGETGNKGEPSAGAQQPPGPSGEEGKRSGPGEPSAGPAGPPGLRGPSPGSRGLPGADGRA
 GVMGPPNRRGSTGPAGVRGPNGDAGRPGEPLMGRPLPGSPGNVGPAGKEGPVGLPGIDGRPGPIGPAG
 PRGEAGNIGFPGPKGPSGDGPKGEGKHPGLAGARGAPDPGNGAQQPPGPQGVQGGKGEQGPAGPPGF
 QGLPGSGTAGEVGKPGERLPGFGLPGPAGPRGERGPPGESGAAGPSGPIGIRGSPGAPDPGNKGEA
 GAVGAPGSAGASGGLPGERGAAGIPGKGEKGETGLRGEIGNPGRDGARGAPGAI GAPGAGASGDRG
 EAGAAGPSGAPRSPGERGEVGPAGNFGAPAGSAGQPAKGEKGTGPKGENGIVGPTGPVGAAGP
 SGPNPPGAPSRDGGPPGMTGFPAAGRTGPPGPSGITGPPGPPGAAGKEGIRGPRGDQGPVVRTGEI
 GASGPPGFAKEKPSGEGTTGPPGTAGQGLL GAPGILGLPSRGERGQPIAGALGEPPLGIAGPPG
 ARGPPGAVGSPVNGAPGEAGRDGNPGSDGPPGRDQPGHKGERGYPGNIGPTGAAGAPGPHGSVPAGK
 HGNRGEPPAGSVGPVAVGPRGSPGQIRGDKGEPGDKGARGLPGLKGHNLQGLPGLAGLHGDQGP
 GPVGPAGPRGAPSGPIGKDGSRGHPGPVGPAGVRSQSQGPAGPPGPPGPPGVPVSGGGYDFGFEF
 GFYRADQPRSQPSLRPKDYEVDTLTKSLNNQIETLLTPEGSRKNPARTCRDLRLSHPKSDYYWIDPNQ
 GCTMDAIKVVYCDFSTGETCIQAQPVNTPAKNAYSRAQANKHWLGETINGGSQFEYNAEYVSSKEMATQL
 AFMRLLANRASQNIYHCKNSIAYLDEETGRLNKAVILQGSNDVELVAEGNSRFTYTVLVDGCSKKTNEW
 DKTVIEYKTNKPSRLPFLDIAPLDIGGTNQEFVVEVGPVCFK

TRTRPLEQKLISEEDLAANDILDYKDDDDKV

Restriction Sites:
 Cloning Scheme:

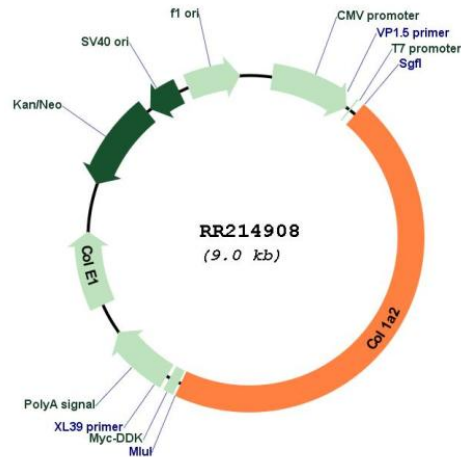
SgfI-MluI

Cloning sites used for ORF Shuttling:



* The last codon before the Stop codon of the ORF

Plasmid Map:



ACCN: NM_053356

ORF Size: 4116 bp

OTI Disclaimer: The molecular sequence of this clone aligns with the gene accession number as a point of reference only. However, individual transcript sequences of the same gene can differ through naturally occurring variations (e.g. polymorphisms), each with its own valid existence. This clone is substantially in agreement with the reference, but a complete review of all prevailing variants is recommended prior to use. [More info](#)

OTI Annotation: This clone was engineered to express the complete ORF with an expression tag. Expression varies depending on the nature of the gene.

Components: The ORF clone is ion-exchange column purified and shipped in a 2D barcoded Matrix tube containing 10ug of transfection-ready, dried plasmid DNA (reconstitute with 100 ul of water).

Reconstitution Method:

1. Centrifuge at 5,000xg for 5min.
2. Carefully open the tube and add 100ul of sterile water to dissolve the DNA.
3. Close the tube and incubate for 10 minutes at room temperature.
4. Briefly vortex the tube and then do a quick spin (less than 5000xg) to concentrate the liquid at the bottom.
5. Store the suspended plasmid at -20°C. The DNA is stable for at least one year from date of shipping when stored at -20°C.

RefSeq: [NM_053356.1](#), [NP_445808.1](#)

RefSeq Size: 4474 bp

RefSeq ORF: 4119 bp

Locus ID: 84352

UniProt ID: [P02466](#)

Cytogenetics: 4q21

MW: 129.6 kDa

Gene Summary: structural constituent of the extracellular matrix [RGD, Feb 2006]