

Product datasheet for RR214905

Rhd (NM_022505) Rat Tagged ORF Clone

Product data:

Product Type:	Expression Plasmids
Product Name:	Rhd (NM_022505) Rat Tagged ORF Clone
Tag:	Myc-DDK
Symbol:	Rhd
Synonyms:	Rh; Rhced
Vector:	pCMV6-Entry (PS100001)
E. coli Selection:	Kanamycin (25 ug/mL)
Cell Selection:	Neomycin
ORF Nucleotide Sequence:	>RR214905 representing NM_022505 Red=Cloning site Blue=ORF Green=Tags(s)

TTTTGTAATACGACTCACTATAGGGCGCCGGAATTCGTCGACTGGATCCGGTACCGAGGAGATCTGCC
GCCGCGATCGCC

ATGGGCTCTAAGTACCCAAGTCCCTCCGCTGCTGCCTGCCCTGTGGGCTTCGGGCTACAGGTGACTT
TTATCCTCCTTCTATTTTCTCATCGGCAAGACCCTATCCAGGCAGATACAAGTTCATGGCGATCTA
TCAAGTATCCAGGATTTGACCCTTGTGGCAGCCTTGGGTTTCGGCTTCCTGTCCTCATCTTTTCGGAGA
CACGGCTGGAGCAGTGTGGCCTTCAGCTTCTTCATGTTGGCCCTTGGGGTACAGGGGACAATCTTGCCTGG
ACTATTTCTGAATTGGGTCTCGACTGGAACATGATCAAGAATCCGTTTCACTCCGTTTCTCAGCATCCA
GAGAGCTACCATAAGCACCTTACCGCTGCTGATCTCAGCGGGCGCTGTCTTGGGAAGGTCAACTTGGTG
CAGCTGGCCGTGATGGTCTGGTGAAGCTATGACCTTTGGTGCCATCAGAGTCGCTGACAAGAAGGTCT
TCAGAATTGAAGACCACATAATCATGATGTACGGACACGTGTTTGGGGCCTATTTTGGGCTGACTGTGGC
ATGGTGGCTTTCCAAGTCTTGCCAGGAGAAGGCATGAGAACGCCAGACAGAAAAGGTTCAAGTACGAC
ACGAGCTCCAGTCTGTTTGGCATGCTGGCACCCTCTTCTGTGGATATCTGGCCAAGTATCAACTCTG
CTCTCTGGAAGGACAAAGAAAAGAACGCAGTGTCAACACCTACTACGCCCTGGCAGTCAGCACAGT
GACAGCCACCTCCATGTCCGCCCTGAGTCACCCAAAGGGAAGATCAACATGGTTTACATCCACAACGCA
GTGCTGGCTGGGGTGTGGCTGTGCGGTGCCCGAGTTGCCTGATTTCTTCTCCTTGGATTGCTATGGTCC
TGGGCTCACAGCTGGGTTGATCTCCATCTGGGGAGCCAAGTGTCCACAGGTGTGTTTGGAGCAGTTGCT
GCTGAACCCAGTGGGATCCACTACACCTTCGGCTTGGCCGCGCTGCTCGGAGCACTCACCTACTACTGC
CTCCATAAATAGCCGAGTCCAGGCCCTCAATCTCTGGATTGTACCCAAACGATCACTGACGTCGGGG
CTCTCAGCTTTGCTATGGCGATGGGAATGGTACTGGACTGCTGACAGGTTGTCTCCTAAGTGTCAAAGT
GTGGAGGGCTCCCATGCAGTCAAGTACTTTGATGATCAGGCTTCTGGGAGTTCACCCACTTGGCTGTC
GAATTT

ACGCGTACGCGGCCGCTCGAGCAGAACTCATCTCAGAAGAGGATCTGGCAGCAAATGATATCCTGGATT
ACAAGGATGACGACGATAAGGTTTAA



[View online »](#)

Protein Sequence: >RR214905 representing NM_022505
 Red=Cloning site Green=Tags(s)

MGSKYPRSLRCLPLWAFGLQVTFILLFYFLIGQDPIQADHKFMAIYQVIQDLTLVAALGFGFLSSSFRR
 HGWSSVAFSFFMLALGVQGTILLDYFLNWVLDWNMIKNPFPFLSIQRATISTLPLLSAGAVLGKVNLV
 QLAVMVLVEAMTFGAIRVADKKVFRIEDHIIMMYGHVFGAYFGLTVAWWLSKSLPRRRHENAQTEKVQMT
 TSSSLFAMLGTLFLWIFWPSINSALLEGTKKKNAVFNTYYALAVSTVTATSMSALSHPKGKINMVHIHNA
 VLAGGVAVGAPSLISSPWIAMVGLGLTAGLISIWGAKCPQVCLSDLLLNPSGIHYTFGLPGLLGALTYYC
 LHIIAESRPSNLWIVTQTITDVGALSFAMAMGMTGLLTGCLLSVKVWRAPHAVKYFDDQAFWEFPHLAV
 EF

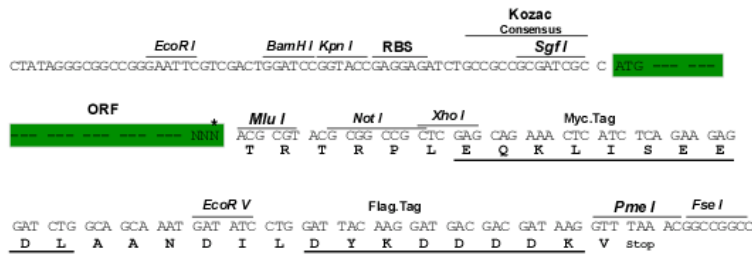
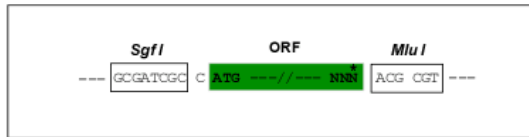
TRTRPLEQKLISEEDLAANDILDYKDDDDKV

Restriction Sites:

SgfI-MluI

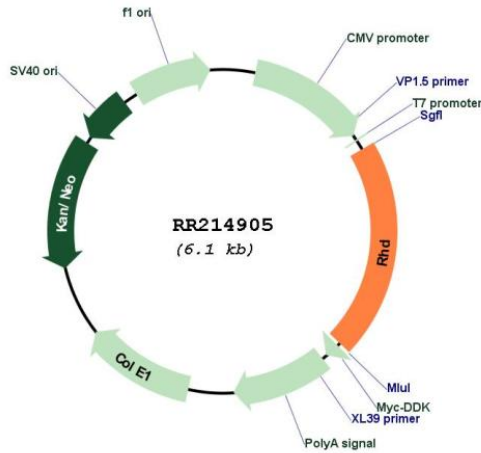
Cloning Scheme:

Cloning sites used for ORF Shuttling:



* The last codon before the Stop codon of the ORF

Plasmid Map:



ACCN:

NM_022505

ORF Size:	1266 bp
OTI Disclaimer:	The molecular sequence of this clone aligns with the gene accession number as a point of reference only. However, individual transcript sequences of the same gene can differ through naturally occurring variations (e.g. polymorphisms), each with its own valid existence. This clone is substantially in agreement with the reference, but a complete review of all prevailing variants is recommended prior to use. More info
OTI Annotation:	This clone was engineered to express the complete ORF with an expression tag. Expression varies depending on the nature of the gene.
Components:	The ORF clone is ion-exchange column purified and shipped in a 2D barcoded Matrix tube containing 10ug of transfection-ready, dried plasmid DNA (reconstitute with 100 ul of water).
Reconstitution Method:	<ol style="list-style-type: none">1. Centrifuge at 5,000xg for 5min.2. Carefully open the tube and add 100ul of sterile water to dissolve the DNA.3. Close the tube and incubate for 10 minutes at room temperature.4. Briefly vortex the tube and then do a quick spin (less than 5000xg) to concentrate the liquid at the bottom.5. Store the suspended plasmid at -20°C. The DNA is stable for at least one year from date of shipping when stored at -20°C.
RefSeq:	NM_022505.2 , NP_071950.1
RefSeq Size:	1509 bp
RefSeq ORF:	1269 bp
Locus ID:	60414
UniProt ID:	O88298
Cytogenetics:	5q36
MW:	46.6 kDa
Gene Summary:	blood group gene; produces antigens on the surface of erythrocytes [RGD, Feb 2006]