

Product datasheet for **RR214851**

Plpp6 (NM_001034854) Rat Tagged ORF Clone

Product data:

Product Type:	Expression Plasmids
Product Name:	Plpp6 (NM_001034854) Rat Tagged ORF Clone
Tag:	Myc-DDK
Symbol:	Plpp6
Synonyms:	Ppapdc2
Mammalian Cell Selection:	Neomycin
Vector:	pCMV6-Entry (PS100001)
E. coli Selection:	Kanamycin (25 ug/mL)
ORF Nucleotide Sequence:	>RR214851 representing NM_001034854 Red=Cloning site Blue=ORF Green=Tags(s)

TTTTGTAATACGACTCACTATAGGGCGGCCGGAATTCGTCGACTGGATCCGGTACCGAGGAGATCTGCC
GCC**CGATCGCC**

ATGCCGAGCCCCGGAGGACTATCGAGGGACGACCGCTAGGCTCCTCGGGCGGAAGCAGCGTCCCGGGCA
GCCCGGCCACGGCGGGCGGGCGGGCAGGGCAGGTTTCGAGTTCCAGTCGCTGCTGAGCTGCCGCTC
GGGCGCGGACCCCGCTGCGCCCGGCTGCGCGCTCCGACAGCCCGGTGCATCGGCGGGCTCCTCCCG
CTGGCTGCCGCTGCCCTGCACAAGTAGCTCCTGCCCCACGCGGAGGACGCCGGCATGAACCTGAACC
CGTCCTTCTGGGCATCGCCCTGCGCTCCCTGCTGCCATCGACCTGTGGCTGTCCAAGAAGCTGGGGT
GTGTGCTGGGAGAGCTCGGCCTGGGGCAGCGTGCGGCCCTGATGAAGCTGCTGGAGATCTCAGGACAT
GGCATCCCTGGTTGCTGGGCACCTCTACTGCCTGCTTAGGAGCGACAGCTGGCCGGGCGCGAAGTGC
TGATGAACCTGCTCTTCGCCCTGCTGTTGGACCTACTGCTGGTGGCTGTGATTAAGGGTTGGTCCGCGAG
GCGCCGACCGGCGACAATCAGATGGACATGTTTTTACCCTCTCGGTGGACAAGTACTCCTTTCCCTCG
GGTCATGCCACGAGGGCCGCCCTGGTGTGCGGTTTCATCTGAACCACCTGGTACTGGCCATTCCACTGA
GGGTGCTGGTGGTCTGTGGGCTTCGTTGGGTCTCTCCAGGGTCATGCTTGGGCGGCACAACGTCAC
TGATGTGGCGTTTGGCTTTTTCTGGGCTACATGCAGTACAGCATTGTGGATTATTGCTGGCTGTACCC
CTCAATGTTCCAGTCTTTTTGTACTGTGAATCAACAG

ACGCGTACGCGGGCGCTCGAGCAGAAACTCATCTCAGAAGAGGATCTGGCAGCAAATGATATCCTGGATT
ACAAGGATGACGACGATAAGGTTTAA



[View online »](#)

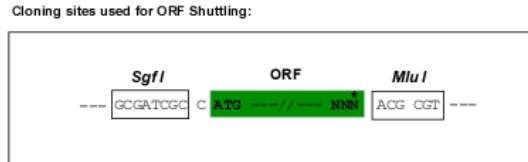
Protein Sequence: >RR214851 representing NM_001034854
Red=Cloning site Green=Tags(s)

MPSPRRTIEGRPLGSSGGSSVPGSPAHHGGGGGSGRFEFQSLSCRSGADPACARLRASDSPVHRRGSFP
 LAAACPAQVAPAPPEDAGMNLNPSFLGIALRSLLAIDLWL SKKLGVCAGESSAWGSVRPLMKLLEISGH
 GIPWLLGTLYCLLRSDSWAGREVLNLLFALLDLLLVAVIKGLVRRRRPAHNQMDMFFTL SVDKYSFPS
 GHATRAALVSRFILNHLVLAIPLRVLLVWAFVLGLSRVMLGRHNVTDVAFGFFLGYMQYSIVDYCWLS
 LNVPVLFVWLNQQ

TRTRPLEQKLISEEDLAANDILDYKDDDDKV

Restriction Sites: SgfI-MluI

Cloning Scheme:



* The last codon before the Stop codon of the ORF

ACCN: NM_001034854

ORF Size: 879 bp

OTI Disclaimer: The molecular sequence of this clone aligns with the gene accession number as a point of reference only. However, individual transcript sequences of the same gene can differ through naturally occurring variations (e.g. polymorphisms), each with its own valid existence. This clone is substantially in agreement with the reference, but a complete review of all prevailing variants is recommended prior to use. [More info](#)

OTI Annotation: This clone was engineered to express the complete ORF with an expression tag. Expression varies depending on the nature of the gene.

Components: The ORF clone is ion-exchange column purified and shipped in a 2D barcoded Matrix tube containing 10ug of transfection-ready, dried plasmid DNA (reconstitute with 100 ul of water).

Reconstitution Method:

1. Centrifuge at 5,000xg for 5min.
2. Carefully open the tube and add 100ul of sterile water to dissolve the DNA.
3. Close the tube and incubate for 10 minutes at room temperature.
4. Briefly vortex the tube and then do a quick spin (less than 5000xg) to concentrate the liquid at the bottom.
5. Store the suspended plasmid at -20°C. The DNA is stable for at least one year from date of shipping when stored at -20°C.

RefSeq: [NM_001034854.1](#), [NP_001030026.1](#)

RefSeq Size: 2874 bp

RefSeq ORF: 882 bp

Locus ID: 619549

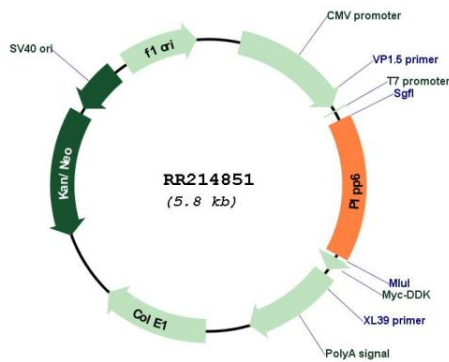
UniProt ID: [Q66H88](#)

Cytogenetics: 1q52

MW: 31.7 kDa

Gene Summary: Phosphatase that dephosphorylates presqualene diphosphate (PSDP) into presqualene monophosphate (PSMP), suggesting that it may be indirectly involved in innate immunity. PSDP is a bioactive lipid that rapidly remodels to presqualene monophosphate PSMP upon cell activation. Displays diphosphate phosphatase activity with a substrate preference for PSDP > FDP > phosphatidic acid (By similarity).[UniProtKB/Swiss-Prot Function]

Product images:



Circular map for RR214851