

Product datasheet for **RR214806**

Ttc39b (NM_001106665) Rat Tagged ORF Clone

Product data:

Product Type:	Expression Plasmids
Product Name:	Ttc39b (NM_001106665) Rat Tagged ORF Clone
Tag:	Myc-DDK
Symbol:	Ttc39b
Synonyms:	RGD1305797
Vector:	pCMV6-Entry (PS100001)
E. coli Selection:	Kanamycin (25 ug/mL)
Cell Selection:	Neomycin



[View online »](#)

ORF Nucleotide Sequence:

>RR214806 representing NM_001106665
 Red=Cloning site Blue=ORF Green=Tags(s)

TTTTGTAATACGACTCACTATAGGGCGGCCGGAATTCGTCGACTGGATCCGGTACCGAGGAGATCTGCC
 GCC**GCGATCGCC**

ATGGCGCTCGTGGCAGCCGAGTGAATTGGACGCGGACGAGGACATCTTTGAAGATGCCTTGGAGACCA
 TCTCTAGGTCTCCATCAGACATGGCAACCAGCGCTTTCACTTTGTACCGTGTGACACCAACCGGACTTC
 CAGACAGCTGGGAGCGCCTGCTGTGGGAAGAGCAGAAGGTTTCATCAGCCAAGGTGGATCTCAAGAGCGGC
 TTGGAGGAGTGTGCAGCGGCGCTGAACCTGTTTCTCAGTAACAGATTCAAAGATGCCTTAGAGTTGCTTC
 GCCCATGGGCCAAGGAGAGCATGTACCACGCTTGGGCTACAGTACTATTGTGGTGTGCAGGCTGCAT
 GACCTTTGAGCAACAGGACATCCAGAATGGCATTTCGCCATGAAGGACGCTTTACAAACGTGCCAAAA
 TACAGGAAGAAGTGCACAGTTGTGGAGTCTTCTCCAGTCTCTTTCTCGGGGTACTGGAACAACCTGA
 GTGAAGAGGAGATGCATGCCGAATCTGTTATGCCGAGTGTCTCCTACAGAAAGCAGCACTCACGTTTGT
 GCAGGATGAAAAATGATCAACTTCATCAAAGGTGGACTCAAAATTAGAACAAGTTACCAATATATAAA
 GAGTGCCTTTCTATCCTGCACGTATTCAGAAGAACAAAGAGAGCAGCATTTCTTCTACGAGTTTGAAG
 GAGGAGTCAAGCTTGAACGGGGCCTTAATTTGATGCTGTCTTTTTACCAGCAAGAATCATCCGATT
 ACTAGAATTTATTGGATTTCTGGAAACAGGGACTGGGCCTTCTGCAGCTACGGGAAGGTGCATCAGGA
 AGCAGCATGCCGTCCCCTCTGTTGCCTTACAATTCTGGCTTCCATACCTACATTTCCCTGATTCTCG
 GTACAGGAGAAGTGAATGTTGCGGAAGCAGAGAGTCTCCTTGACCGTTCCTTCAGCAGTCCCAATGG
 CTCCCTCATCTCTTCTATCATGCCGAATCGAGCTGTGAAAGGCAACGCTGAAAGGCTCAAGAAACA
 TTTCGAAAATGCATTTCAAGTCAAGAAGAGTGGAAACAGTTTACCATCTTTGTTACTGGGAATTAATGT
 GGATTTATATACCAACAAAAATGGATGCAGGCGTATTACTATTCAGATCTACTTTGCAAGAGAGATAA
 ATGGTCCAAGGCAACATATGTGTTCTTGAAGCTGCCATTTTGGAGCATGCTTCCAGAGGAAGAGTGGCA
 GTGACTAAGGAGAATGTAGTGTCTCTGTTCCAGACAGGTAGATGGCTTGAAGCAGAGAATCGCCGGAAAT
 CTCTCCAACCGAGAAGTTCGCTGTGAGGAAGGCTCGGAGGACTCTCCCTCTTCGGGTGTCCAGGAAA
 ACTCGTCTTGCCAGCCCTGGAAATGATGTACGTCTGGAACGGCTTTTCAATAGTGGGCAAAAGAAAGGAC
 CTTTCTGAAAACCTCTTGGTACTGTGGAGAAGGCTGAAGAGGCTTACAAAATCAAACCTTACTGACT
 ACTCCGTGGACGACGAATGCTTGGTGAAGTACTGAAAGGATGTTGCCTCAAAAACCTACAGCGGCCCTT
 GCAAGCCGAGCTGTGTTCAACCATGTTTGGAAAGTGAAGCTATTGAAGTATGACCACTACCTGGT
 CCATTCCTCTGTTTGAAGTGGCATTGTTGATAAAAAGTCAAGGGGAAATCGACAAGGCCATCAAGTCC
 TCGAAACCGCAAGAAACAACATAAAGATTACTCCTTGGAGTCCAGACTACACTCAGAATTCAGCAGC
 TCTTCATCTCTGGAAGAAGCCATCTCAGAT

ACGCGTACGCGGCCGCTCGAGCAGAAACTCATCTCAGAAGAGGATCTGGCAGCAATGATATCCTGGATT
 ACAAGGATGACGACGATAAGGTTTAA

Protein Sequence:

>RR214806 representing NM_001106665
 Red=Cloning site Green=Tags(s)

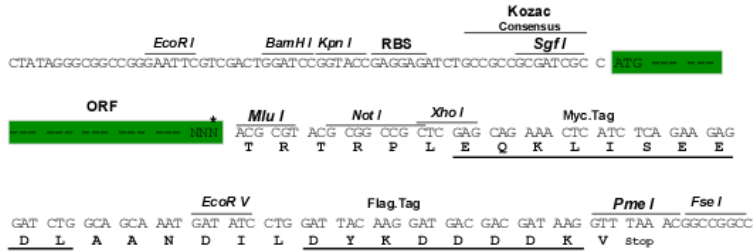
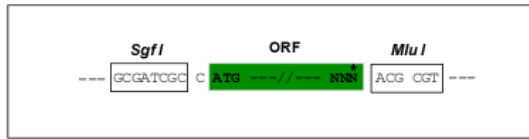
MALVGSRVELDADEDIFEDALETISRSPSDMATSGFHFVPCDKRTSRQLGAPAVGRAEGSSAKVDLKS
 LEECAAALNLFSLNRFKDALELLRPWAKESMYHALGYSTIVVLQAVMTFEQDIQNGISAMKDALQTCQK
 YRKKCTVVEFSLLSRGSLEQLSEEEMHAEICYAECLLQKAALTFVQDENMINF IKGGLKIRTSYQIYK
 ECLSLHVIQKNKEEQHFFYEFEGGVKLTGAFNLMLSLLPARIIRLLEF IGFSGNRDLGLLQLREGASG
 SSMRSPCLCLTILAFHTYISLILGTGEVNVAAESLLAPFLQFPNGSLILFYHARIELLKNAEKAQET
 FRKCVSQEHWKQFHHLCYWELMWIYIYQNWMAQYYSDDLCKESKWSKATYVFLKAAILSMLPEEEVA
 VTKENVVSLFRQVDGLKQRIAGKSLPTEKF AVRKARRYSPPSSGVPGLVLPALEMMYVWNGFSIVGKRKD
 LSENLLVTVEKAEELQNQNFDTYSVDDECLVKLLKGCCLKNLQRPLQAEFCFNHVLESEKLLKYDHYLV
 PFTLFELAFLYKSQGEIDKAIKIVLETARNYKDYSLERLHFRIQAALHLWKKPSSD

TRTRPLEQKLISEEDLAANDILDYKDDDDKV

Restriction Sites: SgfI-MluI

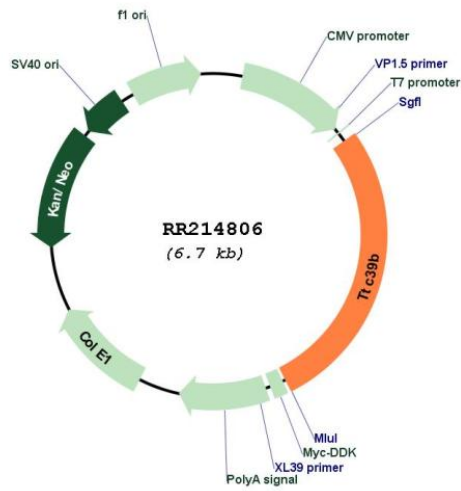
Cloning Scheme:

Cloning sites used for ORF Shuttling:



* The last codon before the Stop codon of the ORF

Plasmid Map:



ACCN: NM_001106665

ORF Size: 1851 bp

OTI Disclaimer:	The molecular sequence of this clone aligns with the gene accession number as a point of reference only. However, individual transcript sequences of the same gene can differ through naturally occurring variations (e.g. polymorphisms), each with its own valid existence. This clone is substantially in agreement with the reference, but a complete review of all prevailing variants is recommended prior to use. More info
OTI Annotation:	This clone was engineered to express the complete ORF with an expression tag. Expression varies depending on the nature of the gene.
Components:	The ORF clone is ion-exchange column purified and shipped in a 2D barcoded Matrix tube containing 10ug of transfection-ready, dried plasmid DNA (reconstitute with 100 ul of water).
Reconstitution Method:	<ol style="list-style-type: none"> 1. Centrifuge at 5,000xg for 5min. 2. Carefully open the tube and add 100ul of sterile water to dissolve the DNA. 3. Close the tube and incubate for 10 minutes at room temperature. 4. Briefly vortex the tube and then do a quick spin (less than 5000xg) to concentrate the liquid at the bottom. 5. Store the suspended plasmid at -20°C. The DNA is stable for at least one year from date of shipping when stored at -20°C.
RefSeq:	NM_001106665.1 , NP_001100135.1
RefSeq Size:	2676 bp
RefSeq ORF:	1854 bp
Locus ID:	298186
UniProt ID:	D3ZC96
Cytogenetics:	5q31
MW:	70.2 kDa
Gene Summary:	Regulates high density lipoprotein (HDL) cholesterol metabolism by promoting the ubiquitination and degradation of the oxysterols receptors LXR (NR1H2 and NR1H3). [UniProtKB/Swiss-Prot Function]