

Product datasheet for **RR214746**

Trip10 (NM_053920) Rat Tagged ORF Clone

Product data:

Product Type:	Expression Plasmids
Product Name:	Trip10 (NM_053920) Rat Tagged ORF Clone
Tag:	Myc-DDK
Symbol:	Trip10
Synonyms:	Cip4; STP
Vector:	pCMV6-Entry (PS100001)
E. coli Selection:	Kanamycin (25 ug/mL)
Cell Selection:	Neomycin



[View online »](#)

ORF Nucleotide Sequence:

>RR214746 representing NM_053920
 Red=Cloning site Blue=ORF Green=Tags(s)

TTTTGTAATACGACTCACTATAGGGCGGCCGGGAATTCGTCGACTGGATCCGGTACCGAGGAGATCTGCC
 GCC**GCGATCGCC**

ATGGATTGGGGTACCGAGTTGTGGGATCAGTTTGGAGTGTGGAACGCCACACACAGTGGGGCTGGATC
 TGTGGACAAATACGTGAAGTTCGTGAAAGAACCGTCGAGGTGGAGCAGTCTTATGCGAAGCAACTCAG
 GAGTCTGGTGA AAAAGTATCTTCCCAAGAGACCTGCCAAAGATGACCCCGAAATCAAGTTTATGCCAGCAA
 CAGTCAATTTGTCCAGCTTCTCCAGGAGGTCAATGATTTTGCAGGCCAACGAGAGCTGGTGGCCGAGAGCC
 TTGGCATCCGAGTGTGTCTGGAGCTGGCTAAGTATTCACAGGAGATGAAGCAAGAGAGGAAGATGCACTT
 CCAAGAAGGCCGTCGGGCCCAGCAGCAGCTGGAAAATGGCTTCAAACAGCTGGAGAATAGTAAGCGAAAG
 TTTGAACGAGACTGTCGCGAGGCTGAGAAAAGCGGCTCACACCGCAGAGCGGCTGGACCAGGACATTAATG
 CCACCAAGGCCGATGTGGAGAAGGCCAAGCAGCAAGCCACCTTCGGAACCATGGCAGAAGAGAGCAA
 GAACGAATACGCGGCCAGCTGCAGCGCTTCAACGGGACCAGGCTCACTTCTACTTCTCACAGATGCCG
 CAGATATTCGACAAGCTGCAGGACATGGATGAACGCGCGGCCACCCGCCTTGGGGCCGGGTATGGGCTCT
 TATCTGAAGCTGAACTGCAGGTGGTTCCTATTATTGGCAAATGCTTGGAGGGCATGAAGTGGCCGAGA
 GTCCGTGGATGCTAAGAACGACTCGAAGGTCTCATCGAATTACACAAGTCAGGGTTTGGCCGCCGGGT
 GACTTGGAAATTTGAAGACTTCAGCCAAGTTATGAACCGAGTCCGTCGGACAGCAGCCTGGGCACCCAG
 ATGGCAGGCCTGAGCTCCGAGCAGCTTCCAGCCGATGTCGTGCCAAGCGTTGGCTTTTGGGAAAAAGAA
 CAAGACCGTGGTCAACGAAGATTTCACTCACCTGCCCGGAGCAGCAGAGAAAGCGACTCCAGCAACAG
 TTGGAAGAGCGGAACCGAGAGTTGCAGAAGGAGGAGGACCAGAGGGAGGCCCTGAAGAAGATGAAAGATG
 TATATGAGAAAAACACCACAAATGGGGGACCCCGCAGCTTAGAGCCCGCATTGCAGAGCCCTGGGCAA
 CATTGAAAGGCTGAACGTGGAAGTGCAGAAGTATGAGGCTTGGTTGGCAGAAGCTGAAACGCGGGTCCCTC
 AGTAACCGAGGGGACAGCCTAAGCCGTCACTAGGCCTCCTGATCCCCCACTACTGCCCCACCTGATA
 GTAGCAGTAGCAGCAACAACAGTGGATCCCAGGATAATATGGAGAGCTCAGAAGAGCCCCCTTCAGAAGA
 AGGCCAGGACACCCCATCTACACTGAGTTCGATGAGGACTTTGAAGAACCTGCATCCCCCATCGGCCAG
 TGTGTGGCTATCTACATTTTGAAGGATCCAGTGAAGGGACCGTCTCCATGTCCGAGGGGGAAGACTCA
 GTCTGATGGAGGAAGACAAGGGTATGGATGGACCGGGTGAAGGAGAAACAGGGAGGCGAGGGCTATGT
 GCCCACCTCTTACCTCCGAGTCACACTCAAC

AG**CGGACCG**ACGCGTACGCGGCCGCTCGAGCAGAACTCATCTCAGAAGAGGATCTGGCAGCAAATGATATCC
 TGGATTACAAGGATGACGACGATAAGGTTTAA

Protein Sequence:

>RR214746 representing NM_053920
 Red=Cloning site Green=Tags(s)

MDWGTTELWDQFEVLERHTQWGLDLLDKYVKFVKERVEVEQSYAKQLRSLVKKYLPKRPKDDPEIKFSQQ
 QSFVQLLQEVNDFAGQRELVAESLGIRVCLLAKYSQEMKQERKMHFQEGRRQQQLLENGFKQLENSKRK
 FERDCREAEKAAHTAERLDQDINATKADVEKAKQQAHLRNHMAEESKNEYAAQLQRFNRDQAHFYFSQMP
 QIFDKLQDMDERRATRLGAGYGLLSEAELQVVP.IIGKCLEGMKVAAESVDAKNDKSKVLIELHKSGFARPG
 DLEFEDFSQVMNRVPSDSSLGTPDGRPELRAASSRSRAKRWPF GKKNKTVVTEDFSHLPPEQQRKRLQQQ
 LEERNRELQKEEDQREALKKMKDVYEKTPQMGDPASLEPRIAETLGNIERLNVEVQKYEAWLAEATRVL
 SNRGDSL SRHTRPPDPTTAPPDSSSSNNSGSQDNMESSEEPPEEGQDTPITYEFDDEDFEEPASPIGQ
 CVAIYHFEGSSEGTVSMSEGEDLSLMEEDKGDGWTRVRRKQGGEGYVPTS YLRVTLN

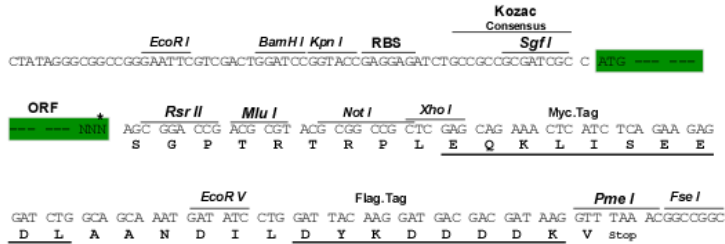
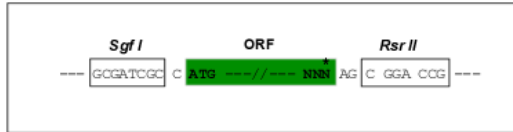
SGP**TRTRPLEQKLI**SEEDLAANDILDYKDDDDKV

Restriction Sites:

Sgfl-RsrII

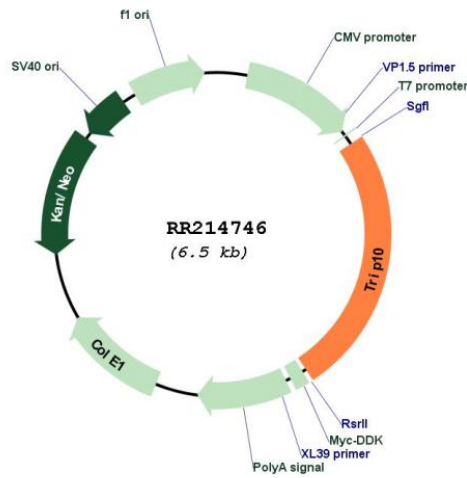
Cloning Scheme:

Cloning sites used for ORF Shuttling:



* The last codon before the Stop codon of the ORF

Plasmid Map:



ACCN:	NM_053920
ORF Size:	1641 bp
OTI Disclaimer:	The molecular sequence of this clone aligns with the gene accession number as a point of reference only. However, individual transcript sequences of the same gene can differ through naturally occurring variations (e.g. polymorphisms), each with its own valid existence. This clone is substantially in agreement with the reference, but a complete review of all prevailing variants is recommended prior to use. More info
OTI Annotation:	This clone was engineered to express the complete ORF with an expression tag. Expression varies depending on the nature of the gene.
Components:	The ORF clone is ion-exchange column purified and shipped in a 2D barcoded Matrix tube containing 10ug of transfection-ready, dried plasmid DNA (reconstitute with 100 ul of water).
Reconstitution Method:	<ol style="list-style-type: none">1. Centrifuge at 5,000xg for 5min.2. Carefully open the tube and add 100ul of sterile water to dissolve the DNA.3. Close the tube and incubate for 10 minutes at room temperature.4. Briefly vortex the tube and then do a quick spin (less than 5000xg) to concentrate the liquid at the bottom.5. Store the suspended plasmid at -20°C. The DNA is stable for at least one year from date of shipping when stored at -20°C.
RefSeq:	NM_053920.1 , NP_446372.1
RefSeq Size:	1958 bp
RefSeq ORF:	1644 bp
Locus ID:	116717
UniProt ID:	P97531
Cytogenetics:	9q12
MW:	62.8 kDa
Gene Summary:	may mediate salt tolerance by modulating the cation transport system [RGD, Feb 2006]