

Product datasheet for **RR214738**

Rrm1 (NM_001013236) Rat Tagged ORF Clone

Product data:

Product Type:	Expression Plasmids
Product Name:	Rrm1 (NM_001013236) Rat Tagged ORF Clone
Tag:	Myc-DDK
Symbol:	Rrm1
Synonyms:	MGC94742
Mammalian Cell Selection:	Neomycin
Vector:	pCMV6-Entry (PS100001)
E. coli Selection:	Kanamycin (25 ug/mL)



[View online »](#)

ORF Nucleotide Sequence:

>RR214738 representing NM_001013236
 Red=Cloning site Blue=ORF Green=Tags(s)

TTTTGTAATACGACTCACTATAGGGCGGCCGGGAATTCGTCGACTGGATCCGGTACCGAGGAGATCTGCC
 GCC**CGCATCGCC**

ATGCATGTGATCAAGCGAGATGGCCGCCAAGAGCGAGTTATGTTTGACAAAATTACATCCCGAATCCAGA
 AACTCTGTATGGACTCAATATGGACTTTGTGGATCCTGCTCAGATCACCATGAAAGTAATCCAAGGCCT
 ATACAGTGGGGTACCACAGTGGAACTGGACACCTGGCTGCTGAGACAGCTGCCACCTTGACTACGAAG
 CACCCTGACTATGCCATCCTGGCAGCAAGGATCGCTGTCTCTAACTTGACAAAGGAAACAAAGAAAGTGT
 TCAGTGACGTGATGGAGGATCTCTACAACACATAAAATCCACACAACGGCAGACATTCTCCCATGGTGGC
 CAGCTCAACACTCGAGATTGTTATGGCCATAAAGGATCGCTGAATTCTGCCATTATCTATGACCGGGAT
 TTCTCTTACAACACTTTGGTTTTAAGACTGGAACGGTCATATTTGTTGAAGATCAATGGAAAAGTGG
 CTGAAAGACCACAGCACATGTTGATGAGGGTATCTGTGGGGATTACAAAAGAAGATATTGATGCTGCAAT
 TGAACATACAATCTACTTTCTGAGAAGTGGTTACTCACGCCTCTCCGACTCTCTCAATGCTGGGACC
 AACCGCCACAGTTGCCAGCTGTTTCTCTTGTAGTATGAAAGATGACAGCATTGAGGGGATTTATGATA
 CTCTGAAGCAGTGTGCCTTGATTCTAAGTCTGCTGGAGGAATTGGTGTGCCGTGAGTTGTATTGGGGC
 CACTGGCAGCTACATTGCTGGGACTAATGGCAATTCTAATGGCCTTGCCCAATGCTGAGAGTCTATAAC
 AACACAGCTCGTTATGTGGATCAAGGTGGAAAACAGCGCCAGGGGCATTTGCTATTTACCTGGAGCCTT
 GGCACCTGGACATCTTTGAGTTTCTTGACTTGAAGAAGACACAGGCAAGGAAGAAGACAGCGCGCGGGGA
 TCTCTTTTGCAGTGTGGATCCAGATCTCTTATGAAGCGAGTGGAGACCAACCAGGACTGGTCACTG
 ATGTGTCCCAATGAGTGTCTGGTCTGGACGAGGTCTGGGAGAGGAGTTTGAAGTTATATGAAAAGTT
 ACGAGAAGCAGGGCCGTGTCCGAAAAGTTGTGAAGGCTCAGCAGCTTTGGTACGCCATCATTGAGTCTCA
 GACGGAGACGGGCACCCATACATGCTCTACAAAGACTCCTGTAACCGGAAGAGCAACCAGCAGAACCCTG
 GGAACCATCAAGTGCAGCAACCTGTGCACAGAGATAGTAGAGTACACCAGTAAAGATGAGGTTGCGGTTT
 GTAACCTGGCTTCTGCTGCTGAACATGTATGTACACCAGAACACACGTATGACTTTGAGAACTGGC
 AGAAGTCACTAAAGTCATTGTCCGAAATCTGAATAAAATAATTGATATAAACTACTATCCTATTCCAGAG
 GCACACTTATCAATAAACGCCATCGGCCATTGGAATTGGGGTACAAGGTCTAGCAGATGCTTTCATCC
 TGATGAGGTATCCCTTTGAGAGCCAGAAGCCAGCTACTAAATAAGCAAATCTTTGAAACCATCTATTA
 TGGAGCCCTGGAAGCCAGCTGTGACCTAGCCAAGGAGTATGGCCCTACGAAACGTATGAGGGATCTCCA
 GTCAGCAAGGGTATTCTTCAGTATGATATGTGGAATGTTACTCCTACAGACCTGTGGGACTGGAAGCTTC
 TCAAGGAGAAGATTGCAAAGTACGGTATAAGAAACAGTTTACTTATTGCCCAATGCCTACTGCTTCAAC
 TGCTCAGATTCTGGGGAATAATGAGTCCATTGAGCCTTACACCAGTAAACATCTACACTCGCAGAGCTTG
 TCAGGAGAATTTAGATTGTGAATCCTCACTTACTGAAAGATCTTACTGAGCGGGCTTGTGGAATGAAG
 AGATGAAAAATCAGATTATTGCCTGCAATGGCTCCATTAGAGCATACCAGAAATTCCTGAGGACCTGAA
 GCAGCTCTATAAGACCGTGTGGGAAATCTCTCAGAAGACTGTTCTCAAGATGGCAGCCGAGAGAGGTGCT
 TTCATCGATCAAAGCCAGTCTTTAAACATCCATATCGCTGAGCCCACTATGGCAAACCTCACTAGTATGC
 ACTTCTACGGTTGGAAGCAGGGTTTAAAGACTGGGATGTATTATTAAGGACAAGACCTGCCGCTAATCC
 AATCCAGTTCCTCTGAACAAGGAAAAGCTGAAAGATAAGGAAAAGGCACTGAAGGAGGAAGAAGAGAAG
 GAGAGGAACACAGCAGCCATGGTGTCTTTGGAGAACAGAGAGGAGTGTCTGATGTGTGGATCC

ACGCGTACGCGGCCGCTCGAGCAGAAACTCATCTCAGAAGAGGATCTGGCAGCAAATGATATCCTGGATT
 ACAAGGATGACGACGATAAGGTTTAA

Protein Sequence: >RR214738 representing NM_001013236
 Red=Cloning site Green=Tags(s)

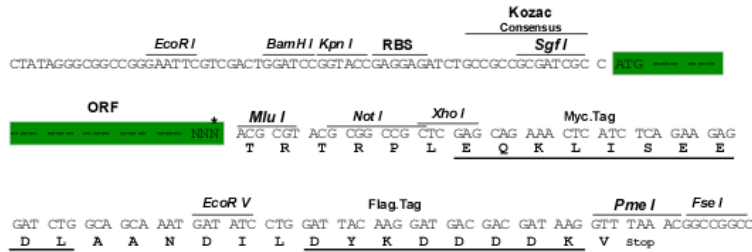
```
MHVIKRDGRQERVMFDKITSRIQKLCYGLNMFVDPAQITMKVIQGLYSGVTTVELDTLAAETAATLTTK
HPDYAILAARIAVSNLHKETKKVFSVDMEDLYNYINPHNGRHSMPVASSTLEIVMAHKDRLNSAIIYDRD
FSYNYFGFKTLERSYLLKINGKVAERPQHMLMRVSVGIHKEDIDAAIETYNLLSEKWFTHASPTLFNAGT
NRPQLSSCFLLSMKDDSIIEGIYDTLKQCALISKSAGGIGVAVSCIRATGSYIAGTNGNSNGLVPMLRVYN
NTARYVDQGGNKRPGAFIYLEPWHLDFEFDLKKNKGKEEQARDLFFALWIPDLFMKRVETNQDWSL
MCPNECPGLDEVWGEEFEKLYESYEKQGRVRKVVKAQQLWYAIIESQTETGTPYMLYKDSCNRKSNQQNL
GTIKCSNLCTEIVEYTSKDEVAVCNLASLALNMYVTPEHTYDFEKLAEVTKVIVRNLNKIIDINYPIPE
AHLNKRHRPIGIGVQGLADAFILMRYPFESPEAQLLNKQIFETIYYGALEASCDLAKEYGPYETEGSP
VSKGILQYDMWNVPTDLWDWKLKKEKIAKYGIRNSLLIAPMPTASTAQILGNNEIEPYTSNIYTRRVL
SGEFQIVNPHLLKDLTERGLWNEEMKNQIIACNGSIQSIPEDLKQLYKTVWEISQKTVLKMAAERGA
FIDQSQSLNIHIAEPNYGKLTSMHFYGWKQGLKTGMYLRTTPAANPIQFTLNKEKLDKKEKALKEEEEK
ERNTAAMVCSLENREECLMCGS
```

TRTRPLEQKLISEEDLAANDILDYKDDDDKV

Restriction Sites: Sgfl-MluI

Cloning Scheme:

Cloning sites used for ORF Shuttling:



* The last codon before the Stop codon of the ORF

ACCN: NM_001013236

ORF Size: 2376 bp

OTI Disclaimer: The molecular sequence of this clone aligns with the gene accession number as a point of reference only. However, individual transcript sequences of the same gene can differ through naturally occurring variations (e.g. polymorphisms), each with its own valid existence. This clone is substantially in agreement with the reference, but a complete review of all prevailing variants is recommended prior to use. [More info](#)
OTI Annotation: This clone was engineered to express the complete ORF with an expression tag. Expression varies depending on the nature of the gene.

Components: The ORF clone is ion-exchange column purified and shipped in a 2D barcoded Matrix tube containing 10ug of transfection-ready, dried plasmid DNA (reconstitute with 100 ul of water).

Reconstitution Method:

1. Centrifuge at 5,000xg for 5min.
2. Carefully open the tube and add 100ul of sterile water to dissolve the DNA.
3. Close the tube and incubate for 10 minutes at room temperature.
4. Briefly vortex the tube and then do a quick spin (less than 5000xg) to concentrate the liquid at the bottom.
5. Store the suspended plasmid at -20°C. The DNA is stable for at least one year from date of shipping when stored at -20°C.

RefSeq: [NM_001013236.1](#), [NP_001013254.1](#)

RefSeq Size: 3038 bp

RefSeq ORF: 2379 bp

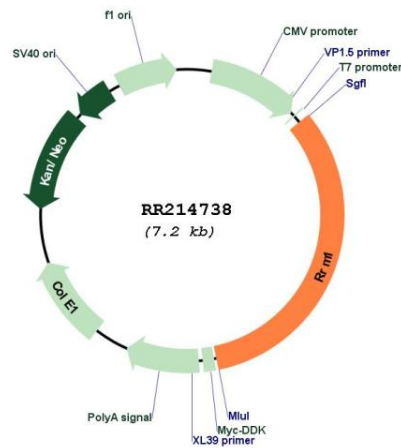
Locus ID: 685579

Cytogenetics: 1q32

MW: 90.3 kDa

Gene Summary: putative ribonucleotide reductase enzyme; human homolog encodes an enzyme required for production of deoxyribonucleotides prior to DNA synthesis [RGD, Feb 2006]

Product images:



Circular map for RR214738