

Product datasheet for **RR214734**

Hells (NM_001106371) Rat Tagged ORF Clone

Product data:

Product Type:	Expression Plasmids
Product Name:	Hells (NM_001106371) Rat Tagged ORF Clone
Tag:	Myc-DDK
Symbol:	Hells
Synonyms:	Tbc1d12
Vector:	pCMV6-Entry (PS100001)
E. coli Selection:	Kanamycin (25 ug/mL)
Cell Selection:	Neomycin



[View online »](#)

ORF Nucleotide Sequence:

>RR214734 representing NM_001106371
 Red=Cloning site Blue=ORF Green=Tags(s)

TTTTGTAATACGACTCACTATAGGGCGGCCGGAATTCGTCGACTGGATCCGGTACCGAGGAGATCTGCC
 GCC**CGGATCGCC**

ATGCCTGCGGAGCGGCCCGCAGCAGCAGCGGCCCTTGCTCCAGAAATGGCTGAGCAAACGGAGCCTG
 CAGTGATTACCCAGCCATGCTGGAGGAGGAAGAACAGCTCGAGGCTGAGGGACTTGAGAAGGAACGGAA
 GATGTTAGAAGAGGCTCGAAAGTCTGGGACAGAGAGTCCACTGAAATTCGGTACCGCAGACTGCAACAT
 TTGCTTAAAAAAGCAATATCTACTCAAAATTTTTGTTGACTAAAATGGAACAACAGCAGTTGGAGGAAC
 AGAAGAAAAAGAGAAGTTGGAGAAAAAAAACGGTCATTAAGTTACAGAGGGTAAAAATTTAATTGA
 TGGAAATGAAGAGAATACAGTCATGAAAAAGAAAAGGAAGAGAAGATGAATCTTATAATATTTTCAGAG
 GTCATGTCAAAGAGGAAATTTGTCAGTGGCTAAAAACATAAGGATAATGAGGATGAAAACCTTCCA
 CTAATACTTTGTGTAAGATCTTCAGAAAAATAAGGATCAAAATAGTATGATTAAGATAGATTGTC
 TCAAACGTAGGACAGAAATCTAAATCTTTTTGATCCAGTTCCGAAATGTAATGGACAGCCTGTACCC
 TTTCAACAACCCAAAGCATTTCACAGGAGGAGTGATGAGGTGGTACCAAGTAGAAGGCATGGAATGGCTTA
 GGATGCTTTGGGAAAATGGAATTAATGGCATTAGCAGATGAAATGGGTTTGGGAAAGACGGTTCAAGT
 CATTGCTACAATTGCATTGATGATTACAGAGGGAGTACCTGGACCTTTCCTTGTGTGGCCCTTTGCT
 ACACCTTCAACTGGATGGCTGAGTTCAAAAGATTTACTCCAGAAATTCCTACTTTGCTGTATCATGGAA
 ACCGGCAGGAACGTCGAAAATTAGTAAAGAATATTCACAAAAGACAAGGGACGTTGCAGATTCATCCTGT
 TGTAATCACATCATTTGAAATAGCTATGAGAGACCAGAATGCTTTACAGCATTGCTATTGGAAATACTTA
 ATAGTAGATGAAGGACACAGGATTAAGAATATGAAGTCCCGCTAATCAGGGAGTTAAAACGGTTCAATG
 CTGATAACAAACTCTTTTGTGACTGGTACTCCCTTGCAAAAACAATTTATCAGAACTTTGGCTATTGCTAAA
 CTTTTTGTACCAGATGATTTGATGACTTGAAAAGCTTTGAGTCTGGTTTGATACACTAGTCTTTCT
 GAAACTGCTGAAGATATTATAGCTAAAGAAAGAGAACAGAACGTTTTACATATGCTGCACCAGATTTTAA
 CGCCTTTCCTACTGAGAAGACTGAAGTCTGATGTTGCTCTTGAAGTCCCTCCTAAGCGGGAAGTGGTTGT
 TTATGCACCCTTTGCAATAAACAGAGATCTTCTATACAGCTATTGTGAACCGCACAATTGCAAACATG
 TTTGGATCTGTGAGAAGGAAACAGTTGAGTTAAGTCTACTGGAAGACCAAAACGGCGAAGTAGAAAGT
 CAATAAATACAGCGAACTGGATCAGTTCCTAGTGAATTAGAAAACTAATAAGTCAAATACAGCCAGA
 AGTAAAAAGAGAGAGGACTGTTGTGGAAGTAATATCCCTATAGAATCTGAAGTTAATCTGAAGCTGCAG
 AATATAATGATGCTACTTCGAAAGTGTGCAATCATCCATATATGATTGAGTACCCTATAGACCCTGTCA
 CACAGGAGTTAAGATTGATGAAGAATTGGTAACAAATCTGGGAAGTTCCTAATTTGGATCGAATGCT
 GCCAGAACTTAAAAAAGATGTCACAAGTTCTGGTTTTTTCACAAATGACAAGCATGTTGGACATCTTG
 ATGGATTATTGCCATCTTAGAACTTTACCTTTAGCAGACTTGATGGGTCCATGTCTTATTCGGAAGAG
 AAAAAATATATACAGTTTCAACACGGATCCAGAGTTTTTCTTTTCTTAGTGAGTACACGAGCTGGTGG
 CTTAGGCATTAATTTGACTGCAGCAGATACAGTATGATTTATGACAGTATTGGAATCCTCAGTCTGAT
 CTCCAGGCCAAGATAGATGTATAGAATTGGTCAGACAAAGCCAGTTGTTGTCTATCGCCTCGTGACAG
 CAAATACTATTGACCAGAAAATTTGTGAAAGAGCAGCTGCTAAAAGAAAGTTGGAGAAAGTGAATAATCCA
 TAAAAATCATTCAAAGTGGTCACTGGGTTAAGTCAATCTAAGAATTTCTTAGATGCAAAGGAATTA
 ATGGAGTTATTAATCTAGAGATTATGAAAGGGAAGTAAAAGGATCCAGAGAGAAGGTCATTAGTGATG
 AAGATCTAGAATTGTTATTAGATCGAAGTATCTCATTGATCAAATGAAGGCTTCAAGACCAATTAAGA
 GAAAACGGGGATTTCAAATACTAGAAAATCTGAAGATTCCAGTGCTGAATGTTGTTT

ACGCGTACGCGGCCGCTCGAGCAGAACTCATCTCAGAAGAGGATCTGGCAGCAAATGATATCCTGGATT
 ACAAGGATGACGACGATAAGGTTTAA

Protein Sequence: >RR214734 representing NM_001106371
Red=Cloning site Green=Tags(s)

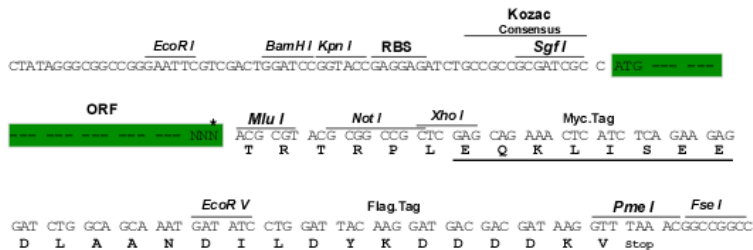
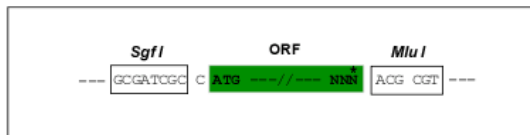
MPAERPASSSGPLAPEMAEQTEPAVITPAMLEEEEQLEAEGLEKERKMLEEARKSWDRESTEIRYRRLQH
LLEKSNIYSKFLTKMEQQLEEQKKKEKLEKKRSLKVTEGKNLIDGNEENTVMKKKRGREDESYNISE
VMSKEEILSVAKKHKDNEDENSSTTNLCVEDLQKNKDSNSMIKDRLSQTVRQNSKFFFDPPVRKCNQGPVP
FQQPKHFTGGVMRWYQVEGMEWLRMLWENGINGLADEMGLGKTVQCIATIALMIQRGVPFPFLVCGPLS
TLPNWMAEFKRFTEIPTLLYHG NRQERRKLVKNIHKRQGLQIHPVVITSFEIAMRDQNALQHCYWKYL
IVDEGHR IKNMKCR LIRELKR FNADNKL LLLTGTP LQNNLSELWSLLN FLLPDVFDLKS FESWFDITSL S
ETAEDII AKEREQ NVLHMLHQ I LTPFLLRRLKSDVALEVPPKREV VVYAPL CNKQEIFYTAIVNRTIANM
FGSCEKETVELSPTGRPKRRSRKSINYSELQFPSELEKLISQIQPEVKRERTVVEGNPIESEVNKLQ
NIMMLLRCCNHPYMI EYPIDPVTQEFKIDEELVTNSGKFLILDRMLPELKKRCHKVLVFSQMTSMLDIL
MDYCHLRNFTFSRLDGSMYSEREKNIYSFNTDPEVFLFLVSTRAGGLGINLTAADTVIIYSDWN PQSD
LQAQDRCHRIGQTKPVVYRLVTANTIDQKIVERAAAKRKLKLIHKNHFKGGQSGLSQSKNFLDAKEL
MELLKSRDYEREVKGSREKVISDELELLLD RSDLIDQMKASRP I KEKTGIFKILENSEDSSAECLF

TRTRPLEQKLI SEEDLAANDILDYKDDDDKV

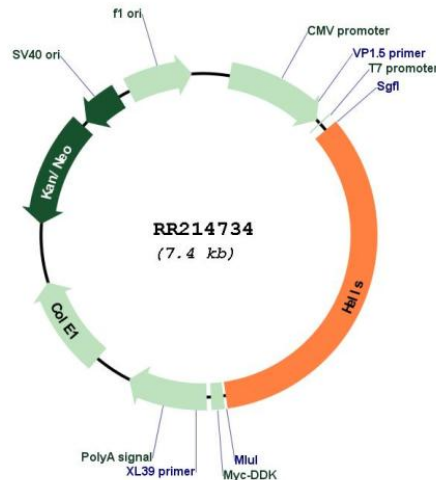
Restriction Sites: Sgfl-MluI

Cloning Scheme:

Cloning sites used for ORF Shutting:



* The last codon before the Stop codon of the ORF

Plasmid Map:


ACCN: NM_001106371

ORF Size: 2511 bp

OTI Disclaimer: The molecular sequence of this clone aligns with the gene accession number as a point of reference only. However, individual transcript sequences of the same gene can differ through naturally occurring variations (e.g. polymorphisms), each with its own valid existence. This clone is substantially in agreement with the reference, but a complete review of all prevailing variants is recommended prior to use. [More info](#)

OTI Annotation: This clone was engineered to express the complete ORF with an expression tag. Expression varies depending on the nature of the gene.

Components: The ORF clone is ion-exchange column purified and shipped in a 2D barcoded Matrix tube containing 10ug of transfection-ready, dried plasmid DNA (reconstitute with 100 ul of water).

Reconstitution Method:

1. Centrifuge at 5,000xg for 5min.
2. Carefully open the tube and add 100ul of sterile water to dissolve the DNA.
3. Close the tube and incubate for 10 minutes at room temperature.
4. Briefly vortex the tube and then do a quick spin (less than 5000xg) to concentrate the liquid at the bottom.
5. Store the suspended plasmid at -20°C. The DNA is stable for at least one year from date of shipping when stored at -20°C.

RefSeq: [NM_001106371.1](#), [NP_001099841.1](#)

RefSeq Size: 3164 bp

RefSeq ORF: 2514 bp

Locus ID: 294071

Cytogenetics: 1q53

MW: 97.1 kDa