

Product datasheet for **RR214731**

Trpm4 (NM_001136229) Rat Tagged ORF Clone

Product data:

Product Type: Expression Plasmids
Product Name: Trpm4 (NM_001136229) Rat Tagged ORF Clone
Tag: Myc-DDK
Symbol: Trpm4
Synonyms: LTrpC-4; MIs2s
Mammalian Cell Selection: Neomycin
Vector: pCMV6-Entry (PS100001)
E. coli Selection: Kanamycin (25 ug/mL)
ORF Nucleotide Sequence: >RR214731 representing NM_001136229
Red=Cloning site Blue=ORF Green=Tags(s)

TTTTGTAATACGACTCACTATAGGGCGGCCGGAATTCGTCGACTGGATCCGGTACCGAGGAGATCTGCC
 GCCCGATCGCC

ATGGTGGGGCAGGAGAAAGAGCAGAGTTGGATCCCTAAGATCTTCAGGAAGAAGGTGTCACGACGTTCA
 TAGTGGACCTCCACGATGATGCGGGAGGGACCTTGTGCCAGTGTGGGCAACCTCGGGATGCCACCCTTC
 TGTGGCTGTGGAGGATGCCTTTGGGGCAGCCGTAGTTACCGAGTGAACAGTGTGAGCACACCACGGAG
 AAGCCCACAGATGCCTACGGGGACCTGGACTTCACATACTCTGGCCGAAAGTCCAGCAACTTCCTCCGGC
 TGTCTGATCGCACGGATCCGGCCACTGTGTACAGTCTCGTCACCCGCTCTTGGGGCTTTCGTGCTCCAAA
 CTTGGTGGTGTGAGTGTGGGGGGTCCGAGGGCCCCGTGCTACAGACCTGGCTGCAGGACCTTCTGCGT
 CGTGGGCTGGTGCAGCAGCCCAGAGCACAGGGCCCTGGATCGTCACTGGGGGACTGCACACAGGCATTG
 GTCGGCATGTGGGTGTGGCTGTGAGGGACCACCAGACGGCCAGCACCGGGGGCAGCAAGGTGGTGGCCAT
 GGGTGTGGCCCCCTGGGGAGTGGTCCGGAACAGAGACATGCTGATCAACCCCAAGGGCTCATTCCCTGCA
 AGATACCGGTGGCGTGGTACCTGAGGACGGAGTTGAGTTCCCCCTGGACTATAACTATTCTGCTTTCT
 TCTTGGTGGATGATGGTACCTATGGCCGCATGGTGGTGAACCGCTCCGCTTCGGTTTGAGTCCTA
 TGTGGCTCAGCAGAAGACCGGAGTGGGAGGGACTGGAATTGACATCCCTGTACTCCTTCTCTCATCGAA
 GGCGATGAGAAGATGTTAAAGCGGATAGAGGATGCCACCCAGGCTCAGCTCCCCGCCTTGGTGGCTG
 GCTCTGGGGTGTGTCAGACTGCCTGGTGGAGACCCTGGAAGATACTCTGGCCCCAGGGAGTGGGGGACT
 CAGGCGAGGTGAAGCCCCGGGATCGAATTAGACGTTACTTCCCTAAAGGAGACCCCGAGGCTCTGCAGGCC
 CAGGTAGAGAGGATCATGACCCGAAAGGAGCTGCTGACAGTCTATTATCAGAGGACGGCTCCGAGGAGT
 TTGAGACTATCGTTTTGAGGGCTCTGTGAAAGCCTGTGGGAGCTCCGAGGCCTCGGCTTACCTGGATGA
 ACTGCGTTTGGCTGTGGCTTGAACCGCGTGGACATCGCCCAAAGTGAACTTTTCCGTGGGGACATCCAG
 TGGCGGCTCTCCACCTGGAGGCCTCTCTCATGGACGCTCTGCTGAATGACCGGCCTGAGTTGTGCGCT
 TGCTCATCTCCCATGGCCTTAGTCTGGGACACTCCTGACCCCGTGCCTGGCCAGCTGTACAGCGC
 AGTGTCCCCAACTCGTGATCCGCAATCTTCTGGACCAGGCGTCCCACGCTAGTAGCAGCAAATCTCCA



[View online >](#)

CCTGCAAATGGAGCTGCAGAGCTCCGGCCTCCTAATGTGGGGCAAGTTCTGAGGACTCTGTTGGGAGAAA
 CGTGTGCACCGCGGTACCCCGCCAGGAACACCCGACACTCCCTGCTGGGCCAGGACCACAGAGAGAATGA
 CTCTCTGCTCATGGACTGGGCAACATGCAACAGGATGCAAGCTTTGAACAAGCCCCCTGGAGTGACCTG
 CTTATCTGGGCTCTGTTGTTGAACCGAGCCAGATGGCCATTTATTTCTGGGAGAAGGGCTCCAACCTCAG
 TGGCCTCTGCTCTCGGGCTTGTCTTACTCCGAGTGATGGCTCGCCTTGAGTGGGAGGCTGAGGAAGC
 TGCACGGCGGAAGGACCTTGTGCCAAGTTTAAAAGCATGAGCGTGGACCTCTTTGGAGAGTGTTACCAC
 AACAGTGAATATCGAGCAGCCCGCTTCTTCTGCGTCGCTGTCCCCTCTGGGGAGAGGCCACCTGTCTCC
 AGCTTGCCATGCAGGCTGACGCCGTGCGTTCTTTGCCAGGATGGAGTACAGTCTCTGCTGACACAGAA
 GTGGTGGGGGAGATGGACAGCAGAACCTATCTGGGCCTGCTTCTCACCTTCTTCTGCCCGCTCTC
 ATCTACACCAACCTCATCTCTTTCAGGAAGTCAAGGAGGAGCCACACAGAAGGATCTTGACTTCGATA
 TGGACAGCAGCATGAATGGAGCAGTCTCTTGGGCCTGCGGAGCCCTCAGCAAAGGTGGCCCTTGAGAG
 GCGGGCGGCGGCGGCCAGGACATACCCTCTGCTGTGGCGGTGCTCCAAGCGCTGGTCTACTTTTGG
 GGGCCCCAGTGACCGCTTCTGGGTAACTGGTCACTTACCTGCTGTTCTGCTGCTGTTTGACACAG
 TGTTGCTGGTGGATTTCCAGCCTACAAAGCCGGGCGTCTTCGAGCTGCTGCTGTACTTCTGGGCCTTAC
 GCTGCTATGCGAGGAGCTGCGCCAGGGCTGGGCGGTGGCTGGGTACCCTGGCCAACGGGGGACCTGGT
 CCTGGCAAAGCTCCCCTGCGCCATCGTCTGCACCTCTACCTCTTGATACTTGAACCAAGTGCAGACTTGC
 TGGCACTCACCTGCTTCTGCTGGGCGTGGCTGCAGGCTGACTCCTGGCCTGTTTACTTGGGACGCAC
 AGTCTCTGTCTTGACTTCATGATCTTCACTGCGCCTGCTGCACATCTTACGGTGAACAAGCAGCTG
 GGGCCCAAGATTGTCATCGTGAGCAAGATGATGAAGGATGATTTCTTTTCTCTTCTCTGCGTGT
 GGCTTGTAGCTTATGGGGTGGCCACAGAGGGGATCCTGAGGCCCCAGGACCGCAGTCTACCGAGCATCT
 GCGCAGGGTCTTCTACCGTCCGTATCTGCAGATCTTCGGACAAATTTCCAGGAGGAAATGGATGTGGCC
 CTCATGAATCCCAGTAACTGCTCTGCCGAGCGGGCTCCTGGGCTCACCCGGAGGGGCGGTGCGCAGGCT
 CCTGTGTGTCCCAGTATGCCAACTGGCTGGTGGTGGTGGTCTCTCATCGTCTTCTTGGTGGCCAATAT
 CCTGCTGCTCAATCTGCTCATCGCCATGTTCAAGCTACACCTTCAACAAAGTGCATGGCAACAGCGACCTC
 TACTGGAAGGCGCAGCGCTACAGCCTCATCCGGGAATTCATTGCGGCCTGCCCTGGCCCCACCCCTCA
 TCATCATCTCTCACCTGCGTCTCTCTTCAAGTGGCTGCGCAGGTGTCATAGGACTAACTTGCCCGCTC
 CCCAGTCTTCGAGCACTCCGTGTCTGTCTCTAAGGAAGCAGAGAGGACGCTGCTGACTTGGGAGTCT
 GTGCACAAAGAGAACTTCTATTGGCACAAGCTCGTGACAAGCGAGACAGCGACTCGGAGCGTCTGAAAC
 GCACGTCCAGAAGGTGGACTGCACTGAAGCAGCTGGGACAGATCAGAGAGTATGACCGGCGTCTGAG
 GGGGCTGGAGAGAGAGTCCAACACTGTTCTCGAGTCTGACTTGGATGGCTGAGGCCCTTAGCCACTCT
 GCCTTACTGCCTCCAGGGGGCCACCCCTCCAAGCCCCACTGGGTCAAAGAC

ACGCGTACGCGGCGGCTCGAGCAGAACTCATCTCAGAAGAGGATCTGGCAGCAAATGATATCCTGGATT
 ACAAGGATGACGACGATAAGGTTTAA

Protein Sequence: >RR214731 representing NM_001136229
 Red=Cloning site Green=Tags(s)

MVGQEKEQSWIPKIFRKKVCTTFIVDLHDDAGGTL CQCGQPRDAHPSVAVEDAFGAAVTEWNSDEHTTE
 KPTDAYGDLDF TYSGRKSNNFLRLSDRTDPATVYSLVTRSWGFRAPNLVSVLGGSEGPVLQTLQDLLR
 RGLVRAAQSTGAWIVTGG LHTGIGRHVGVAVRDHQ TASTGGSKVVAMGVAPWGVVVRNRM L INPKGSFPA
 RYRWRGDPEDGVEFPLDYNYS AFFLVDDGTYGRMGGENRFRLRFESYVAQQKTGVGGTGIDIPVLLLLIE
 GDEKMLKRIEDATQAQLPCLLVAGS GGAADCLVETLEDTLAPGSGGLRRGEARDRIRRYFPKGDPEVLQA
 QVERIMTRKELLTVYSS EDGSEEFETIVLRALVKACGSSEASAYLDELRLAVAWNRVDIAQSELFRGDIQ
 WRSFHLEASLMDALLNDRPEFVRL LISHL SLGHFLTPVRLAQLYS AVSPNSLIRNLLDQASHASSKSP
 PANGAAELRPPNVGQVLR TLLGETCAPRYPARNTRHSL LGQDHRENSL LMDWANMQDASFEQAPWSDL
 LIWALLNRAQMAIYFWEKGSNSVASALGACLLLRVMARLEWEAEEAARRKDLAAKFESMSVDLFGECYH
 NSEYRAARLLLRCP LWGEATCLQLAMQADARAFFAQDGVQSL L TQKWWGEMDSTNPIWALLL TFFCPPL
 IYTNLILFRKSEEEPTQKDLDFDMDSSMNGAGPLGPAEPSAKVALERRRRRPGHTLCCGGCSKRWSYFW
 GAPVTAFLGNVSYLL FLLLFAHVLLVDFQPTKPGVFELLLYFWAFTLLCEELRQGLGGGWGTLANGGPG
 PGKAPLRHRLHLYLLDTWNQCDLLALTCFLLGVGCRLTPGLFDLGRVLCDFMIFTLRLLHIFTVNKQL
 GPKIVIVSKMMKVFFFLFCVWLVAYGVATEGILRPQDRSLPSILRRVFRPYLQIFGQIPQEEMDVA
 LMNPSNCSAERGSWAHP EGPVAGSCVSYANWLVVLLLVFLLVANILLNLLIAMFSYTFNKVHGNSDL
 YWKAQRYSLIREFH SRPALAPPLIIISHLRLLFKWLR RCHRTNLPASPVEHFVRVCLSKEAERTLLTWES
 VHKENFLLAQARDKRDSERLKR TSQKVDTALKQLGQIREYDRRLRGLEREVQHCSRVL TWMAEALSHS
 ALLPPGGPPPPSPTGSKD

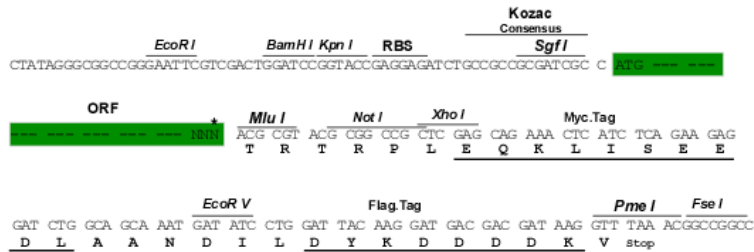
TRTRPLEQKLISEEDLAANDILDYKDDDDKV

Restriction Sites:

SgfI-MluI

Cloning Scheme:

Cloning sites used for ORF Shuttling:



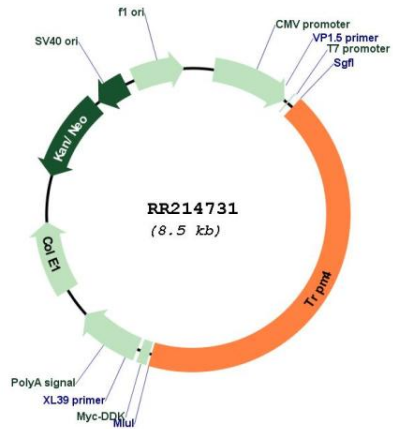
* The last codon before the Stop codon of the ORF

ACCN: NM_001136229

ORF Size: 3624 bp

OTI Disclaimer:	The molecular sequence of this clone aligns with the gene accession number as a point of reference only. However, individual transcript sequences of the same gene can differ through naturally occurring variations (e.g. polymorphisms), each with its own valid existence. This clone is substantially in agreement with the reference, but a complete review of all prevailing variants is recommended prior to use. More info
OTI Annotation:	This clone was engineered to express the complete ORF with an expression tag. Expression varies depending on the nature of the gene.
Components:	The ORF clone is ion-exchange column purified and shipped in a 2D barcoded Matrix tube containing 10ug of transfection-ready, dried plasmid DNA (reconstitute with 100 ul of water).
Reconstitution Method:	<ol style="list-style-type: none">1. Centrifuge at 5,000xg for 5min.2. Carefully open the tube and add 100ul of sterile water to dissolve the DNA.3. Close the tube and incubate for 10 minutes at room temperature.4. Briefly vortex the tube and then do a quick spin (less than 5000xg) to concentrate the liquid at the bottom.5. Store the suspended plasmid at -20°C. The DNA is stable for at least one year from date of shipping when stored at -20°C.
RefSeq:	NM_001136229.1 , NP_001129701.1
RefSeq Size:	4203 bp
RefSeq ORF:	3627 bp
Locus ID:	171143
UniProt ID:	Q9ESQ5
Cytogenetics:	1q22
MW:	135.3 kDa
Gene Summary:	member of a family of calcium permeable channels [RGD, Feb 2006]

Product images:



Circular map for RR214731