

## Product datasheet for **RR214684**

### Clu (NM\_053021) Rat Tagged ORF Clone

#### Product data:

Product Type:	Expression Plasmids
Product Name:	Clu (NM_053021) Rat Tagged ORF Clone
Tag:	Myc-DDK
Symbol:	Clu
Synonyms:	APOJ; CLI; DAG; RATRPM2B; SGP-2; SGP2; SP-40; SP40; TRPM-2; Trpm2; TRPM2B; Trpmb
Vector:	pCMV6-Entry (PS100001)
E. coli Selection:	Kanamycin (25 ug/mL)
Cell Selection:	Neomycin



[View online »](#)

**ORF Nucleotide Sequence:**

>RR214684 representing NM\_053021  
 Red=Cloning site Blue=ORF Green=Tags(s)

TTTTGTAATACGACTCACTATAGGGCGGCCGGGAATTCGTCGACTGGATCCGGTACCGAGGAGATCTGCC  
 GCCGCGATCGCC

ATGAAGATTCTCCTGCTGTGTGGCACTGCTGCTGACCTGGGACAATGGCATGGTCTGGGAGAGCAGG  
 AGTTCTCTGACAAATGAGCTCCAAGAAGTGTCCACTCAAGGAAGTAGGTATGTTAATAAGGAGATTGAGAA  
 CGCCGTCAGGGGGTGAAGCACATAAAGACCCTCATAGAAAAACCAACGCAGAGCGCAAGTCCCTGCTC  
 AACAGTTTAGAGGAAGCCAAAAAGAAGAAAGAGGGTCTAGATGACACCAGGGATTCTGAAATGAAGC  
 TGAAGGCTTCCCGGAAGTGTGTAAACGAGACCATGATGGCCCTCTGGGAAGAGTGAAGCCCTGCCTGAA  
 GCACACCTGCATGAAGTTCTACGCACGCGTCTGCAGGAGCGGCTCGGGGCTGGTGGTGCAGCTAGAG  
 GAGTTTCTGAACCAGAGCTCACCTTCTACTTCTGGATGAACGGGACCGCATCGACTCCCTGCTGGAGA  
 GTGACCGGCAGCAGGCAAGTCTAGATGCTATGCAGGACAGCTTCACTCGGGCGTCTGGCATCATACA  
 TAGCTTTTCCAGGACCGTTCTTACCCTATGAGCCCCAGGACATCCACCATTTCTCCCCATGGGCTTC  
 CCACACAAGCGGCTCATTTCTGTACCCCAAGTCCCGCTTGGTCCGCAGCCTCATGCCTCTCTCCCACT  
 ACGGGCTCTGAGCTTCCACAACATGTTCCAGCCTTTCTTTGATATGATACACCAGGCTCAACAGGCCAT  
 GGACGTCCAGCTCCATAGCCAGCTTTACAGTCCCGGATGTGGATTTCTAAAAGAAGGTGAAGATGAC  
 CCGACAGTGTGAAGGAGATCCGCCATAACTCCACAGGATGCCTGAAGATGAAGGGCCAGTGTGAGAAGT  
 GCCAAGAGATCTGTCTGTGGACTGTTCCAGCAACAATCTGCCAGGCTAACCTGCGCCAGGAGCTAAA  
 CGACTCGCTCCAGGTGGTGTGAGAGGCTGACCCAGCAGTACAACGAGCTGCTTATTCCCTCCAGTCCAAG  
 ATGCTCAACACCTCATCCCTGCTGGAACAGCTGAACGACCAGTTCACGTGGGTGTCCAGCTGGCTAACC  
 TCACACAGGGCGATGACCAGTACCTTCGGGTCTCCAGTGAACAACCCATTCTTCTGACTCAGAAGTCCC  
 CTCTCGTCTACTGAGGTGGTGGTGAAGCTGTTTGAAGTCTGACCTGACCCCATCACAGTGGTGTACCAGAAGAA  
 GTCTCCAAGGATAACCTAAGTTTATGGACACAGTGGCAGAGAAAGCGCTACAGGAATACCGCAGGAAAA  
 GCCGCATGGAA

AGCGGACCGACGCGTACGCGGCCGCTCGAGCAGAACTCATCTCAGAAGAGGATCTGGCAGCAAATGATATCC  
 TGGATTACAAGGATGACGACGATAAGGTTTAA

**Protein Sequence:**

>RR214684 representing NM\_053021  
 Red=Cloning site Green=Tags(s)

MKILLLCVALLLTWNGMVLGEQEFSDNELQELSTQGSRYVNKEIQNAVQGVKHIKTLIEKTNAERKSL  
 NSLEEAKKKKEGALDDTRDSEMKLKAFPEVCNETMMALWEECKPCLKHTCMKFYARVCRSGSLVGRQLE  
 EFLNQSSPFYFWMNGDRIDSLLSDRQSQVLDAMQDSFTRASGIHTLFDQDRFFTHEPQDIHHSFPMGF  
 PHKRPHFLYPKSRLVRSMLPLSHYGPLSFHNMFPFFDMIHQAAQAMDVQLHSPALQFPDVFDFLKEGEDD  
 PTVCKEIRHNSTGCLKMKGQCEKQCEILSVDCSTNNPAQANLRQELNDSLQVAERLTQQYNELLHSLQSK  
 MLNTSSLLEQLNDQFTWVSQLANLTQDDQYLRVSTVTTHSSDSEVPSRVTEVVVKLFSDSPITVVLPEE  
 VSKDNPKFMDTVAEKALQEYRRKSRME

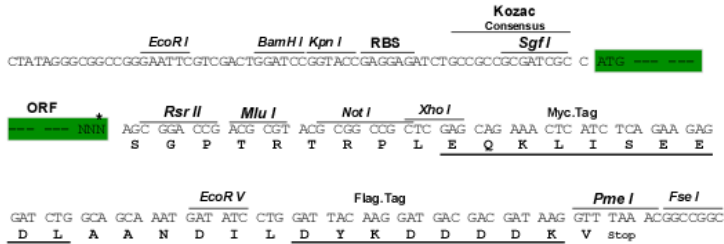
SGPTRTRPLEQKLI SEEDLAANDILDYKDDDDKV

**Restriction Sites:**

Sgfl-RsrII

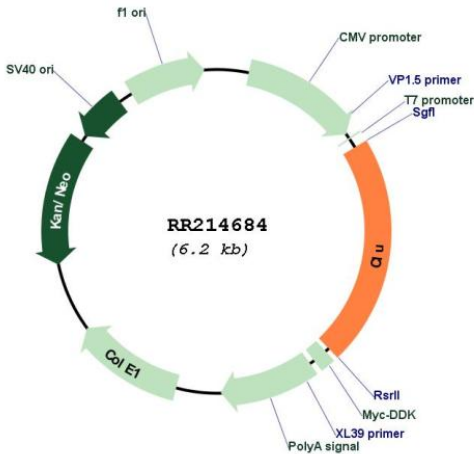
Cloning Scheme:

Cloning sites used for ORF Shuttling:



\* The last codon before the Stop codon of the ORF

Plasmid Map:



ACCN: NM\_053021  
 ORF Size: 1341 bp

<b>OTI Disclaimer:</b>	<p>Due to the inherent nature of this plasmid, standard methods to replicate additional amounts of DNA in E. coli are highly likely to result in mutations and/or rearrangements. Therefore, OriGene does not guarantee the capability to replicate this plasmid DNA. Additional amounts of DNA can be purchased from OriGene with batch-specific, full-sequence verification at a reduced cost. Please contact our customer care team at <a href="mailto:custsupport@origene.com">custsupport@origene.com</a> or by calling 301.340.3188 option 3 for pricing and delivery.</p> <p>The molecular sequence of this clone aligns with the gene accession number as a point of reference only. However, individual transcript sequences of the same gene can differ through naturally occurring variations (e.g. polymorphisms), each with its own valid existence. This clone is substantially in agreement with the reference, but a complete review of all prevailing variants is recommended prior to use. <a href="#">More info</a></p>
<b>OTI Annotation:</b>	<p>This clone was engineered to express the complete ORF with an expression tag. Expression varies depending on the nature of the gene.</p>
<b>Components:</b>	<p>The ORF clone is ion-exchange column purified and shipped in a 2D barcoded Matrix tube containing 10ug of transfection-ready, dried plasmid DNA (reconstitute with 100 ul of water).</p>
<b>Reconstitution Method:</b>	<ol style="list-style-type: none"><li>1. Centrifuge at 5,000xg for 5min.</li><li>2. Carefully open the tube and add 100ul of sterile water to dissolve the DNA.</li><li>3. Close the tube and incubate for 10 minutes at room temperature.</li><li>4. Briefly vortex the tube and then do a quick spin (less than 5000xg) to concentrate the liquid at the bottom.</li><li>5. Store the suspended plasmid at -20°C. The DNA is stable for at least one year from date of shipping when stored at -20°C.</li></ol>
<b>RefSeq:</b>	<p><a href="#">NM_053021.2</a>, <a href="#">NP_444180.2</a></p>
<b>RefSeq Size:</b>	<p>1857 bp</p>
<b>RefSeq ORF:</b>	<p>1344 bp</p>
<b>Locus ID:</b>	<p>24854</p>
<b>UniProt ID:</b>	<p><a href="#">P05371</a></p>
<b>Cytogenetics:</b>	<p>15p12</p>
<b>MW:</b>	<p>51.4 kDa</p>
<b>Gene Summary:</b>	<p>The protein encoded by this gene is a secreted chaperone that can under some stress conditions also be found in the cell cytosol. It has been suggested to be involved in several basic biological events such as cell death, tumor progression, and neurodegenerative disorders.[provided by RefSeq, May 2011]</p>