

## Product datasheet for **RR214508**

### Fmo5 (NM\_144739) Rat Tagged ORF Clone

#### Product data:

Product Type:	Expression Plasmids
Product Name:	Fmo5 (NM_144739) Rat Tagged ORF Clone
Tag:	Myc-DDK
Symbol:	Fmo5
Vector:	pCMV6-Entry (PS100001)
E. coli Selection:	Kanamycin (25 ug/mL)
Cell Selection:	Neomycin



[View online »](#)

**ORF Nucleotide Sequence:**

>RR214508 representing NM\_144739  
 Red=Cloning site Blue=ORF Green=Tags(s)

TTTTGTAATACGACTCACTATAGGGCGGCCGGAATTCGTCGACTGGATCCGGTACCGAGGAGATCTGCC  
 GCC**GCGATCGCC**

ATGCCAAGAAAAGGATCGCTGTAATTGGATCAGGAGCCAGCGGGCTCACCTGCATCAAGTCTGCCTAG  
 AAGAGGGTTTGGAACTGTCTGCTTTGAAAGTCTGATGACATCGGAGGACTGTGGAGGTACCAGGAAAA  
 CCCTGAGAAAGGAAGGGCCAGTATTTAAGTCTGTGATCATCAACACTTCCAAGGAGATGATGTGTTTC  
 AGTGACTACCCTATTCCAGATCATTACCCTAATTTCATGCACAACCTCCAGGTCCTGGAGTATTTTCAGGA  
 TGTACGCCAAAGAGTTTGGCCTTCTCAAAATATATCCAATTCAAGACCACAGTGTGCAGCGTGAAGAAGCA  
 GCCTGATTTCTCTACCTCAGGCCAGTGGCAAGTGGTCACTGAGCATGAAGGAAACAGCAGGTAGACGTC  
 TTCGATGGAGTCTGGTTTGCACAGGTCATCACACGGACCCTCACCTGCCCTGGACAGCTTTCTGGAA  
 TTGAAAAGTTCAAAGGAAAGTACTTCCACAGTCGAGAATAAAGAACCAGTGAATTTACCGGGAAAAG  
 GGTCAATTGTCATTGGCATTGGGAATTCTGGAGGAGATCTGGCTGTAGAGATCAGCCACACAGCCAAGCAG  
 GTGTTCTCAGTACCAGGAGAGGAGCTTGATCTTGAACCGCGTAGGGAAACGTGGATATCTATTGATA  
 TTCTGCTTTCTTCTCGAATTACCAACTATCTGTCAAAGATCTGTGGCTCAGCCCTGAAAAACAGATATAT  
 GGAAAAACAGTTGAACCAAAGGTTTGATCATGAAATGTTTGGCCTGAAGCCTAAGCACAGTGCTCTGGGT  
 CAGCATCCAACGATAAACGATGACCTGCCCAATCGTATCATTTCTGGCTTGGTGAAGGTGAAAGGCAATG  
 TGAAGGAATTCACAGAGACGGCCGCATATTTGAAGATGGCTCCAGGGAGGATGACATTGATGTGGTCAT  
 CTTTGGCCACAGGCTACAGCTTTGCCTTTCTTTCTTGGAGACTCTGTCAAAGTAGTCCAAAACAAGGTC  
 TCCTTGATATAAAAAGGCTTTTCCCCTAACCTGGAAAAACCAACTTTGCAATCATCGGTTAATTACAGC  
 CCTTGGGAGCCATTATGCCTATTTAGAGCTCCAAGGACGCTGGGCCACTCAGGTGTTCAAAGGGTAAA  
 GAAATTGCCCTCCCAAAGTGAAATGATGGCAGAAATAAATAAGACTCGAGAGGAAATGGCAAAAAGGTAT  
 GTGGACAGCCAGCGTCATACCATCCAGGGAGACTATATAGACACCATGGAAGAGATTGCAGATTTGGTGG  
 GTGTCAGGCCCAATCTCCTGTCTCTGGCCTTACCAGCCCTAAGCTGGCATTCCAGTTACTGTAGGACC  
 CTGACTCCGGTCCAGTATCGTCTACAGGGCCCGGGAAGTGGGCTGGAGCCGAAAAACTATTCTCACC  
 ACAGAAGATCGTATACGAAAGCCTCTGATGACAAGAGTGGTGGAAAGGGACAGCTCTGGGACGTCAGTGG  
 TGACTGTGCGTCTCATGCTGGCTGCACTTCTGGCTGTCATCCTGGCTTATTT

**ACGCGT**ACGCGGCCGCTCGAGCAGAAACTCATCTCAGAAGAGGATCTGGCAGCAAATGATATCTGGATT  
 ACAAGGATGACGACGATAAGGTTTAA

**Protein Sequence:**

>RR214508 representing NM\_144739  
 Red=Cloning site Green=Tags(s)

MAKKRIAVIGSGASGLTICKCLEEGLEPVCFERSDDIGGLWRYQENPEKGRASIYKSVIINTSKEMMCF  
 SDYPIPDHYPNFMHNSQVLEYFRMYAKEFGLLKYIQFKTTVCSVKKQPDFSTSGQQVQVTEHEGKQVQDV  
 FDGVLVCTGHHTDPLPLDSFPGIEKFKGKYFHSREYKNPVEFTGKRVIIVIGIGNSGGDLAVEISHTAKQ  
 VFLSTRRGAWILNRVKGKRGYPIDILLSSRITNYLSKICGSALKNRYMEKQLNQRFDHEMFLKPKHSALG  
 QHPTINDDLNRIISGLVKVKGNVKEFTETAALFEDGSREDDIDVVIFATGYSFAFPFLDSVKVQNKV  
 SLYKKVFPNLEKPTLAIIGLIQPLGAIMPISELQGRWATQVFKGLKLPQSEMMAEINKTREEMAKRY  
 VDSQRHTIQGDYIDTMEIADLVGVRPNLLSLAFDTPKLAFLQLLVGPCTPVQYRLQGPWKWAGARKTILT  
 TEDIRKPLMTRVVERDSSGTSLVTVRVLMLAVTFLAVILAYF

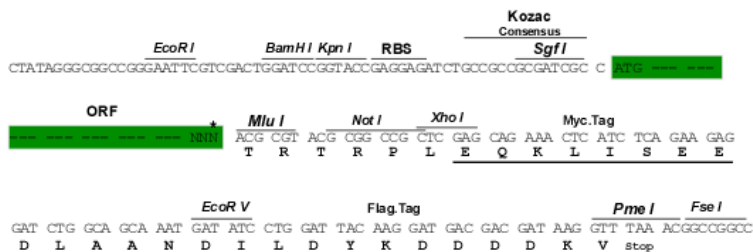
**TR**TRPLEQKLISEEDLAANDILDYKDDDDKV

**Restriction Sites:**

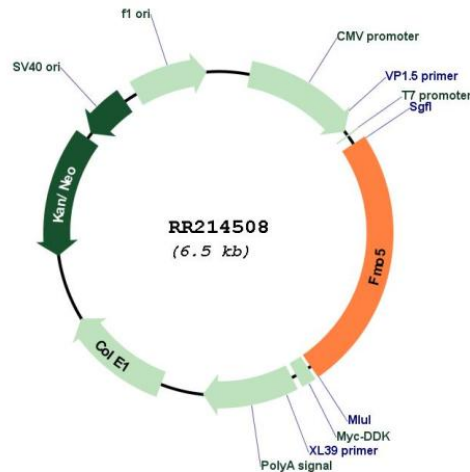
SgfI-MluI

Cloning Scheme:

Cloning sites used for ORF Shuttling:



\* The last codon before the Stop codon of the ORF

**Plasmid Map:**


**ACCN:** NM\_144739

**ORF Size:** 1599 bp

**OTI Disclaimer:** The molecular sequence of this clone aligns with the gene accession number as a point of reference only. However, individual transcript sequences of the same gene can differ through naturally occurring variations (e.g. polymorphisms), each with its own valid existence. This clone is substantially in agreement with the reference, but a complete review of all prevailing variants is recommended prior to use. [More info](#)

**OTI Annotation:** This clone was engineered to express the complete ORF with an expression tag. Expression varies depending on the nature of the gene.

**Components:** The ORF clone is ion-exchange column purified and shipped in a 2D barcoded Matrix tube containing 10ug of transfection-ready, dried plasmid DNA (reconstitute with 100 ul of water).

**Reconstitution Method:**

1. Centrifuge at 5,000xg for 5min.
2. Carefully open the tube and add 100ul of sterile water to dissolve the DNA.
3. Close the tube and incubate for 10 minutes at room temperature.
4. Briefly vortex the tube and then do a quick spin (less than 5000xg) to concentrate the liquid at the bottom.
5. Store the suspended plasmid at -20°C. The DNA is stable for at least one year from date of shipping when stored at -20°C.

**RefSeq:** [NM\\_144739.1](#), [NP\\_653340.1](#)

**RefSeq Size:** 2706 bp

**RefSeq ORF:** 1602 bp

**Locus ID:** 246248

**UniProt ID:** [Q8K4C0](#)

**Cytogenetics:** 2q34

**MW:** 60.1 kDa

**Gene Summary:** In contrast with other forms of FMO it does not seem to be a drug-metabolizing enzyme.  
[UniProtKB/Swiss-Prot Function]