

## Product datasheet for **RR214499**

### Casp3 (NM\_012922) Rat Tagged ORF Clone

#### Product data:

Product Type:	Expression Plasmids
Product Name:	Casp3 (NM_012922) Rat Tagged ORF Clone
Tag:	Myc-DDK
Symbol:	Casp3
Synonyms:	CPP32-beta; Lice; Yama
Vector:	pCMV6-Entry (PS100001)
E. coli Selection:	Kanamycin (25 ug/mL)
Cell Selection:	Neomycin
ORF Nucleotide Sequence:	>RR214499 representing NM_012922 Red=Cloning site Blue=ORF Green=Tags(s)

TTTTGTAATACGACTCACTATAGGGCGCCGGAATTCGTCGACTGGATCCGGTACCGAGGAGATCTGCC  
GCC**CGGATCGCC**

ATGGACAACAACGAAACCTCCGTGGATTCAAAATCCATTAATAATTTTGAACAAAGACTATCCATGGAA  
GCAAGTCGATGGACTCTGGAATATATCTGGACAGCAGTTACAAAATGGATTACCCTGAAATGGGCTTG  
TATAATAATTAATAAAGAAGTCCATAAAAGCACTGGAATGTCAGCTCGCAATGGTACCGATGTCGAT  
GCAGCTAACCTCAGAGAGACATTCATGGCCCTGAAATACGAAGTCAGGAATAAAAATGACCTTACTCGT  
AAGAAATTATGGAATTGATGGATAGTGTCTAAGGAAGATCACAGCAAAAGGAGCAGTTTTGTGTGTGT  
GATTCTAAGTCATGGAGATGAAGGAGTAATTTTGAACGAACGGACCTGTGGACCTGAAAAACTAACT  
AGTTTCTCAGAGGCGACTACTGCCGAGTCTGACTGGAAGCCGAAACTCTTCATCATTAGGCCTGCC  
GAGGTACAGAGCTGGACTGCGGTATTGAGACAGACAGTGGAACTGACGATGATATGGCATGCCAGAAGAT  
ACCAAGTGGAGGCCGACTTCTGTATGCTTACTCTACCGCACCCGGTACTATTCTGGAGAAATTCAGG  
GACGGGTCATGGTTCATCCAGTCACTTTGCGCCATGCTGAAACTGTACGCGCACAAGCTGGAATTCATGC  
ACATCTCACTCGTGTTAACCGAAGGTGGCCACGGAATTTGAGTCCTTCTCCCTGGACGCCACTTTCCA  
TGCAAAGAAACAGATCCCGTGTATTGTGCAATGCTCACAAAAGAAGTACTTTTATCAC

**ACGCGT**ACGCGGCCGCTCGAGCAGAAACTCATCTCAGAAGAGGATCTGGCAGCAATGATATCCTGGATT  
ACAAGGATGACGACGATAAGGTTTAA



[View online »](#)

**Protein Sequence:** >RR214499 representing NM\_012922  
Red=Cloning site Green=Tags(s)

MDNNETSVDKSKINNFETKTIHGSKSMDSGIYLDSSYKMDYPEMGLCIIINNKNFHKSTGMSARNGTDVD  
 AANLRETFMALKYEVNRKNDL TREEIMELMDSVSKEDHSKRSSFVCVILSHGDEGVIFGTNGPVDLKLT  
 SFFRGDYCRSLTGKPKLFI IQACRGTELDGCIETD SGTDDDMACQKIPVEADFL YAYSTAPGYYSWRNSR  
 DGSWFIQSLCAMLKLYAHKLEFMHILTRVNRKVATEFESFSLDATFHAKKQIPCIVSMLTKELYFYH

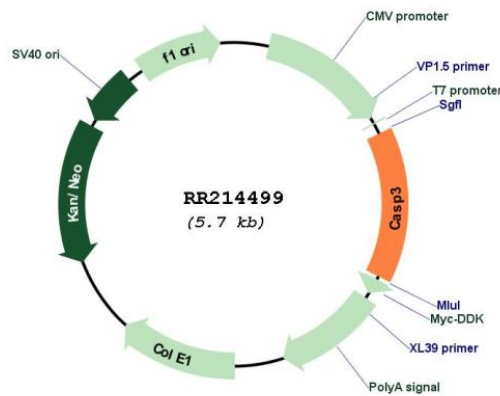
TRTRPLEQKLISEEDLAANDILDYKDDDDKV

**Restriction Sites:** SgfI-MluI

**Cloning Scheme:**



**Plasmid Map:**



**ACCN:** NM\_012922  
**ORF Size:** 831 bp

<b>OTI Disclaimer:</b>	The molecular sequence of this clone aligns with the gene accession number as a point of reference only. However, individual transcript sequences of the same gene can differ through naturally occurring variations (e.g. polymorphisms), each with its own valid existence. This clone is substantially in agreement with the reference, but a complete review of all prevailing variants is recommended prior to use. <a href="#">More info</a>
<b>OTI Annotation:</b>	This clone was engineered to express the complete ORF with an expression tag. Expression varies depending on the nature of the gene.
<b>Components:</b>	The ORF clone is ion-exchange column purified and shipped in a 2D barcoded Matrix tube containing 10ug of transfection-ready, dried plasmid DNA (reconstitute with 100 ul of water).
<b>Reconstitution Method:</b>	<ol style="list-style-type: none"><li>1. Centrifuge at 5,000xg for 5min.</li><li>2. Carefully open the tube and add 100ul of sterile water to dissolve the DNA.</li><li>3. Close the tube and incubate for 10 minutes at room temperature.</li><li>4. Briefly vortex the tube and then do a quick spin (less than 5000xg) to concentrate the liquid at the bottom.</li><li>5. Store the suspended plasmid at -20°C. The DNA is stable for at least one year from date of shipping when stored at -20°C.</li></ol>
<b>RefSeq:</b>	<a href="#">NM_012922.2</a> , <a href="#">NP_037054.1</a>
<b>RefSeq Size:</b>	2484 bp
<b>RefSeq ORF:</b>	834 bp
<b>Locus ID:</b>	25402
<b>UniProt ID:</b>	<a href="#">P55213</a>
<b>Cytogenetics:</b>	16q11
<b>MW:</b>	31.5 kDa
<b>Gene Summary:</b>	apoptotic cysteine-aspartic acid protease that may play a role in neuronal cell death regulation and other apoptotic processes [RGD, Feb 2006]