

Product datasheet for **RR214493**

Lrsam1 (NM_001107833) Rat Tagged ORF Clone

Product data:

Product Type:	Expression Plasmids
Product Name:	Lrsam1 (NM_001107833) Rat Tagged ORF Clone
Tag:	Myc-DDK
Symbol:	Lrsam1
Synonyms:	RGD1564403
Mammalian Cell Selection:	Neomycin
Vector:	pCMV6-Entry (PS100001)
E. coli Selection:	Kanamycin (25 ug/mL)



[View online »](#)

ORF Nucleotide Sequence:

>RR214493 representing NM_001107833
 Red=Cloning site Blue=ORF Green=Tags(s)

TTTTGTAATACGACTCACTATAGGGCGGCCGGGAATTCGTCGACTGGATCCGGTACCGAGGAGATCTGCC
 GCC**GCGATCGCC**

ATGCCTCTCTTTTCGGAAGCGGAAACCCAGTGAAGAGCTCGGAAACGCCTGGAGTACCAGATGTGTC
 TGGCAAAAAGAAGCTGGGGCAGATGACATCCTTGACATCTCTAAGTGCAGCTTTCCGAGATTCCATTGG
 GGCTTTTGCAACGTGCAAAGTTCTACAGAAAAAGGTGTTGATTGTCCACAAAACCATCTCACCTCCCTG
 CTGCCAAGTCTGCAGCCTCTTGAGCCTCGCCACCATCAAGTTCTGGATCTCCATGACAAACAGCTGA
 CAGCCCTTCTGACGATATTGGGCAGCTGACAGCCCTGCAGGTATTGAATGTAGAAAAGGAATCAACTGAC
 ACACCTCCCACGCTCTGTTGGGAACCTGCTGCAGCTCCAGACCCTCAACGTAAAAGACAACAAGTAAAG
 GAGCTTCCGGACACCCTGGGGGAGCTGCGGAGCCTGCGTACCCTCGACATCAGTAAAAATGAGATCCAGA
 GACTTCCCAGATGCTGGCTCATGTGCGGACCCTGGAGACGCTGAGCCTCGATGCCTTGCAATGGTCTA
 CCCCCACCAGAGGTGTGTGGCGCTGGCACTGCGGCCGTGCAGCAGTTCTCTGCAAAGAGTCAGGCCTG
 GACTATTACCCACCTTCTCAGTACCTGCTGCCAGTCTGGAGCAAGATGGAGCCGAGAACCTCCAGGACA
 GCCCTGATGGACCACACGCAGATTCTCCAGGGAGGAGGCTGAATGGCAGAATCGGTTCTCCGACTACGA
 GAAGCGAAAGGAGCAGAAGATGCTGGAGAAGCTGGAGTTCGAGCGGCCTGGACCTCGGGCAGCGGGAG
 CATGCTGAGTGTCCAGCAGAGCCACAGCCACAAGGACGAGATCCTGCAGACGGTCAAGCAGGAGCAGA
 CACGGCTCGAGCAGGGCCTGAGTGAAGCGCCAGCGCTGCCTGGATGCAGAACGGCAGCAGCTGCAGGAGCA
 GCTCAAGCAGTCGGAGCAGAGCATTGCCAGCCGATCCAGAGACTCCTGCAGGACAATCAGAGGCAAAAAG
 AAGAGTTCTGAGATTCTGAAATCACTGGAGAATGAGAGAATACGAATGGAGCAGCTGATGTCCATTACCC
 AGGAGGAGACCGAGAACCTCAGGCAGCTGAGATCGCCGCGCCATGCAGCAGATGCTGACCCGAGACTG
 TAAGAGCCGGCTCATCCAGATGGCTATGAGTCCAGAGGCAGAGCCTGGTGCAGCAGGCCCTGTTCCAGC
 ATGGCTGAAATGGACAAGCGGTTCCAGCAGATTCTGTCATGGCAGCAGATGGACCAGAACAAGCCATCA
 GCCAGATCCTCAGGAGAGTGTGATGCAGAAGGCTGCATTGAGGCTCTCCAGGTAAAGAAAGACCTCAC
 GCATCGGCAGATCAGGAGCCAGATTAGGCTAATAGAAACTGAGTTACTGCAGCTGACACAGCTGGAGTTA
 AAGAGGAAGTCCCTGGACACAGAGACGCTTCCAGGAGATGGTCTCAGAGCAGCGCTGGGCGCTCAGCAACC
 TGCTCCAGCAGCTCCTCAAAGAGAAGAAGCAGCGGGAAGAGGAGCTCCATGGCATCTGGCGGAATTAGA
 GGCCAAGAGTGAACGAAGCAGGAAAATTAAGGCTCATCCAGTACCAACGGCTTTTGAACCAGAAGCCT
 TTGTCCTTGAAGTGCAGGAAGAAGGCATGGAGCGGCAGCTGGTGGCCCTGCTGGTGGAGCTGTCTGCTG
 AGCACTACCTGCCCTCTTCGCCACCACCGCATCACACTGGACATGCTGAGCCGGATGGGTCTGGAGA
 TCTGGCTAAGGTGGGTGTCTCAGAAGCAGGCCTGCAACATGAAATCCTGCGAAGAGCCCGGGACCTGCTG
 GATGTGGCCAGGGTCCAACCAGAGTTGAAACCACCAAGAATGAGGTCTTTGGTGTCTCTGAGCCCCCA
 CAGCCCCCAGGAGCTTCTGAGTCCGTGAGACCATCTGCCCCCAGCTGAACTGGACGTGCCGACCTC
 AGAGTGTGTTGTGTGCCTGGAACGTGAGGCCAGATGGTCTTCTCACCTGCGGCCATGTCTGCTGCTGC
 CAGCAGTGTGCCAGCCGCTGCGCACCTGCCACTGTGCCCCAGGAGATCTCCAGCGCCTCCGGATCT
 ACCACAGCAGC

ACGCGTACGCGGCCGCTCGAGCAGAAACTCATCTCAGAAGAGGATCTGGCAGCAAATGATATCCTGGATT
 ACAAGGATGACGACGATAAGGTTTAA

Protein Sequence: >RR214493 representing NM_001107833
 Red=Cloning site Green=Tags(s)

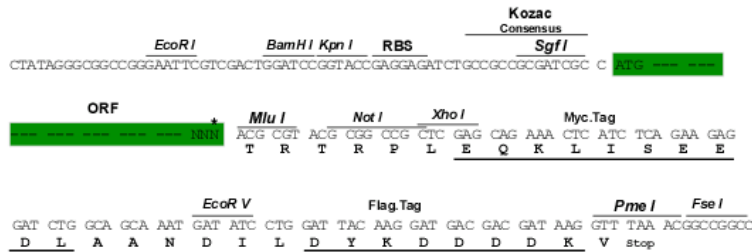
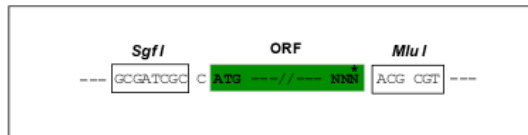
MPLFFRKRKPSEEARKRLEYQMCLAKEAGADDILDISKCELSEIPFGAFATCKVLQKKVLIVHTNHLTSL
 LPKSCSLLSLATIKVLDLHDNQLTALPDDIGQLTALQVLNVERNQLTHLPRSVGNLLQLQTLNVKDNKLLK
 ELPDTLGELRSLRTLDISENEIQRLPQMLAHVRTLETLSLDALSMVYPPPEVCGAGTAAVQQFLCKESGL
 DYPPSQYLLPVLEQDGAENSQDSPDGPTRRF SREEAEWQNRFS DYEKRKEQKMLEKLEFERRLDLQORE
 HAELLQQSHSHKDEILQTVKQEQRLEQGLSERQRCLDAERQQLQEQLKQSEQSIASRIQRLLQDNQRQK
 KSSEILKSLENERIRMEQLMSITQEETENLRQREIAAAMQQMLTESCKSRLIQMAYESQRQSLVQQACSS
 MAEMDKRFQQILSWQQMDQNKAI SQILQESVMQKAAFEALQVKKDLTHRQIRSQIRLIETELLQLTQLEL
 KRKSLDTETLQEMVSEQRWALS NLLQQLLKEKKQREEELHGILAELEAKSETKQENYWL IQYQRLLNQKP
 LSLKLQEEMERQLVALLVELSAEHYLPLFAHHRITLDMLSRMGPGDLAKVGVSEAGLQHEILRRARDLL
 DVARVQPELPPKNEVFGVSEPPTAPQELPESVRPSAPPAELDVPTSECVCLERE AQMVFLTCGHVCCC
 QCCQPLRTCPLCRQEISQRLRIYHSS

TRTRPLEQKLI SEEDLAANDILDYKDDDDKV

Restriction Sites: SgfI-MluI

Cloning Scheme:

Cloning sites used for ORF Shuttling:



* The last codon before the Stop codon of the ORF

ACCN: NM_001107833

ORF Size: 2181 bp

OTI Disclaimer: The molecular sequence of this clone aligns with the gene accession number as a point of reference only. However, individual transcript sequences of the same gene can differ through naturally occurring variations (e.g. polymorphisms), each with its own valid existence. This clone is substantially in agreement with the reference, but a complete review of all prevailing variants is recommended prior to use. [More info](#)

OTI Annotation: This clone was engineered to express the complete ORF with an expression tag. Expression varies depending on the nature of the gene.

Components: The ORF clone is ion-exchange column purified and shipped in a 2D barcoded Matrix tube containing 10ug of transfection-ready, dried plasmid DNA (reconstitute with 100 ul of water).

- Reconstitution Method:**
1. Centrifuge at 5,000xg for 5min.
 2. Carefully open the tube and add 100ul of sterile water to dissolve the DNA.
 3. Close the tube and incubate for 10 minutes at room temperature.
 4. Briefly vortex the tube and then do a quick spin (less than 5000xg) to concentrate the liquid at the bottom.
 5. Store the suspended plasmid at -20°C. The DNA is stable for at least one year from date of shipping when stored at -20°C.

RefSeq: [NM_001107833.1](#), [NP_001101303.1](#)

RefSeq Size: 4894 bp

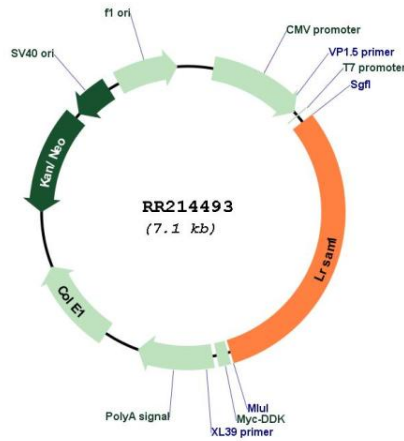
RefSeq ORF: 2184 bp

Locus ID: 311866

Cytogenetics: 3p11

MW: 83.8 kDa

Product images:



Circular map for RR214493