

## Product datasheet for **RR214489**

### Flot1 (NM\_022701) Rat Tagged ORF Clone

#### Product data:

Product Type:	Expression Plasmids
Product Name:	Flot1 (NM_022701) Rat Tagged ORF Clone
Tag:	Myc-DDK
Symbol:	Flot1
Synonyms:	Rareg
Vector:	pCMV6-Entry (PS100001)
E. coli Selection:	Kanamycin (25 ug/mL)
Cell Selection:	Neomycin
ORF Nucleotide Sequence:	>RR214489 representing NM_022701 Red=Cloning site Blue=ORF Green=Tags(s)

TTTTGTAATACGACTCACTATAGGGCGCCGGAATTCGTCGACTGGATCCGGTACCGAGGAGATCTGCC  
GCC**CGATCGCC**

ATGTTTTTCACTTGTGGCCAAATGAGGCCATGGTGGTCTCCGGTTCTGCAGGAGCCCCCAGTCATGG  
TGGCCGGAGGCCGAGTGTTCCTACCCTGCATTCAACAAATCAAAGGATCTCTCTCAACACACTGAC  
CCTCAATGTCAAGAGTGAGAAGTTTATACCCGCCACGGGGTCCCATCTCAGTCACGGGATTGCCAG  
GTGAAAATCCAGGGGCAAAACAAGGAGATGCTGGCAGCTGCCTGCCAGATGTTCCGGGGAAGACAGAGG  
CAGAGATCGCCACATTGCCCTGGAGACGCTGGAAGGCCACCAGAGGGCAATCATGGCCACATGACTGT  
GGAGGAGATCTATAAGGACAGACAGAAGTTCTCAGAGCAGTTTTCAAGGTGGCCTCCTCCGACCTGGTC  
AACATGGGTATCAGTGTGGTTAGCTACACTTTGAAGGACATTCACGATGACCAGGATTACTTACACTCTT  
TGGGGAAGGCTCGCACAGCACAAGTGCAGAAAGATGCTCGGATTGGAGAAGCAGAGGCCAAGAGAGATGC  
GGGATACGGGAGGCTAAGGCCAAGCAGGAGAAGGTATCCGCACAGTGCCTCAGTGAATAGAGATGGCC  
AAGGCCAGAGGGACTATGAGCTGAAGAAAGCCACCTACGACATTGAGGTCAACACCCGGCAGCACAGG  
CAGACCTGGCCTATCAGCTGCAGTGGCCAAGACGAAGCAGCAGATCGAGGAGCAGCGGGTACAGGTGCA  
GGTGGTGGAGCGGCCAGCAGGTGGCAGTGCAGGAGCAGGAGATAGCAAGGCGCGAGAAGGAGCTGGAG  
GCCCGGTGCGCAAGCCAGCGGAGGCTGAGCGCTACAGGCTGGAGCGCCTGGCGGAAGCAGAGAAGGCC  
AGCTGATCATGCAGGCAGAAGCTGAAGCTGAGTCTGTGCGGATGCGAGGGGAAGCTGAGGCCCTTGGCGT  
AGGGGCCCGCTCGTGTGAGGCTGAGCAATGGCCAAGAAGGCAGAAGCCTTCCAGATGTACCAGGAG  
GCCGCCAGCTGGACATGCTGCTGGAGAACTGCCCCAGGTGGCAGAAGAGATCAGTGGCCCCCTGACCT  
CAGCCAATAAGATCACGCTGGTGTCTAGCGGAAGCGGAACCATGGGGGCCCAAAGTTACTGGGAAGT  
ACTGGACATCTTAAGCCGTCTGCCAGAGAGTGTGGAGAGACTCACAGGCGTCAGCATCTCCAGGTGAAT  
CACAACAAGCCTTAAGGACGGCC

**ACGCGT**ACGCGGCCGCTCGAGCAGAAACTCATCTCAGAAGAGGATCTGGCAGCAAATGATATCCTGGATT  
ACAAGGATGACGACGATAAGGTTTAA



[View online >](#)

**Protein Sequence:** >RR214489 representing NM\_022701  
 Red=Cloning site Green=Tags(s)

MFFTCGPNEAMVVSFGCRSPPVMVAGGRVFLPCIQQIQRISLNTLTLNVKSEKVYTRHGVPI SVTGIAQ  
 VKIQGQNKEMLAACQMFLGKTEAIEAHIALETLEGHQRAIMAHMTVEEIKYDRQKFSEQVFKVASSDLV  
 NMGISVSVSYTLKDIHDDQDYLHSLGKARTAQVQKDARIGEA EAKRDAGIREAKAKQEKVSAQLSEIEMA  
 KAQRDYELKKATYDIEVNTRRAQADLAYQLQVAKTKQIEEQRVQVQVVERAQQVAVQEQEIARREKELE  
 ARVRKPAEAERYRLERLAEAEKQLIMQAEAEAE SVRMRGEAEAFAVGARARA EAEQMAKKA EAFQMYQE  
 AAQLDMLLEKLPQVAEEISGPLTSANKITLVSSGSGTMGAAKVTGEVLDILSRLPESVERLTGVSISQVN  
 HNKPLRTA

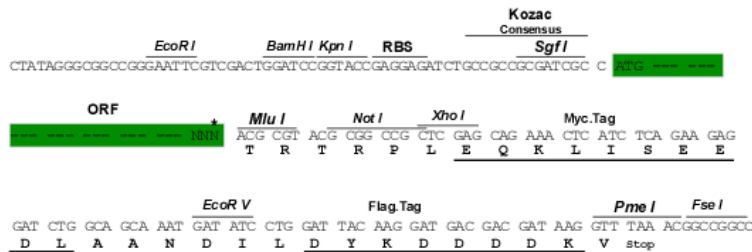
TRTRPLEQKLISEEDLAANDILDYKDDDDKV

**Restriction Sites:**

SgfI-MluI

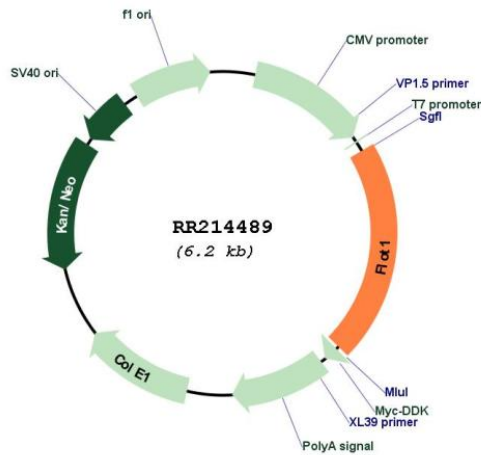
**Cloning Scheme:**

Cloning sites used for ORF Shuttling:



\* The last codon before the Stop codon of the ORF

**Plasmid Map:**



**ACCN:**

NM\_022701

<b>ORF Size:</b>	1284 bp
<b>OTI Disclaimer:</b>	The molecular sequence of this clone aligns with the gene accession number as a point of reference only. However, individual transcript sequences of the same gene can differ through naturally occurring variations (e.g. polymorphisms), each with its own valid existence. This clone is substantially in agreement with the reference, but a complete review of all prevailing variants is recommended prior to use. <a href="#">More info</a>
<b>OTI Annotation:</b>	This clone was engineered to express the complete ORF with an expression tag. Expression varies depending on the nature of the gene.
<b>Components:</b>	The ORF clone is ion-exchange column purified and shipped in a 2D barcoded Matrix tube containing 10ug of transfection-ready, dried plasmid DNA (reconstitute with 100 ul of water).
<b>Reconstitution Method:</b>	<ol style="list-style-type: none"><li>1. Centrifuge at 5,000xg for 5min.</li><li>2. Carefully open the tube and add 100ul of sterile water to dissolve the DNA.</li><li>3. Close the tube and incubate for 10 minutes at room temperature.</li><li>4. Briefly vortex the tube and then do a quick spin (less than 5000xg) to concentrate the liquid at the bottom.</li><li>5. Store the suspended plasmid at -20°C. The DNA is stable for at least one year from date of shipping when stored at -20°C.</li></ol>
<b>RefSeq:</b>	<a href="#">NM_022701.2</a> , <a href="#">NP_073192.2</a>
<b>RefSeq Size:</b>	1718 bp
<b>RefSeq ORF:</b>	1287 bp
<b>Locus ID:</b>	64665
<b>UniProt ID:</b>	<a href="#">Q9Z1E1</a>
<b>Cytogenetics:</b>	20p12
<b>MW:</b>	47.5 kDa
<b>Gene Summary:</b>	colocalized with activated GPI-linked cell adhesion molecules at the plasma membrane where transmembrane signaling may occur [RGD, Feb 2006]