

Product datasheet for **RR214483**

Itln1 (NM_001034946) Rat Tagged ORF Clone

Product data:

Product Type: Expression Plasmids
Product Name: Itln1 (NM_001034946) Rat Tagged ORF Clone
Tag: Myc-DDK
Symbol: Itln1
Synonyms: MGC124684
Vector: pCMV6-Entry (PS100001)
E. coli Selection: Kanamycin (25 ug/mL)
Cell Selection: Neomycin
ORF Nucleotide Sequence: >RR214483 representing NM_001034946
Red=Cloning site Blue=ORF Green=Tags(s)

CTATAGGGCGCCGGGAATTCGTCGACTGGATCCGGTACCGAGGAGATCTGCCGCCGCGATCGCC**GGCGC**
GCCC

ATGACCCAACCTCGGCTTTCTGCTGTTTCTCATCGTTGCCACCAGAGGGGGCAGTGCGGCTAAAGAGGACC
TGGAAACCAACAAAGGGACCCATTCTTTCTTTGACTCTCTGTCCAGAAGCTGCAAGGAAATCAAGGAGGA
GAACACAGGGGCTCAAGATGGCCTCTATTTCTGCGCACGGAGAATGGTGTCTCTACCAGACCTTCTGT
GACATGACCACTGCAGGTGGTGGCTGGACCCTGGTGGCTAGCGTGCATGAGAACAACATGGGTGGGAAGT
GCACAGTGGGCGATCGCTGGTCCAGTCAGCAAGGCAACAGAGCAGATTACCCAGAGGGGGATGGCAATTG
GGCCAACCTACAACACCTTTGGTCTGCAGAGGGTGCCACAAGTGATGACTACAAGAACCCCTGGCTACTTC
GACATCCAGGCTGAGAACCTGGGCATCTGGCACGTGCCAACACAGCCCCTGCACAGCTGGAGGAACA
GCTCCCTGCTGCGGTACCGCACCTTCACTGGCTTCTGTCAGCATCTGGGCCATAATCTGTTTGGCCTCTA
CCAGAAGTACCCGGTAAATATGGAGAAGGAAAGTGTGGACTGACAATGGCCGAGGAATTCACTGCAG
GATTTGTTCAAGTTCAGAGTGATAACAATGAGAGAGCGGCCAGTGCCTTGTGTGCTGGCATAAGGTCAC
TGGATGTAATTCTGAAGCTCACTGCATCGGTGGAGGAGGATTCTTCCAGAAGGTAACCCCTTGCAGTGT
GGAGACTTCGGGGCGTTTGATTGGAACGGATACGGAACCTCACATTGGGTACAGCAGTAGCCGGGAGATAA
CTGAAGCAGCCGTGCTTCTGTTCTATCGC

ACGCGTACGCGGCCGCTCGAGCAGAAACTCATCTCAGAAGAGGATCTGGCAGCAATGATATCCTGGATT
ACAAGGATGACGACGATAAGGTTTAA



[View online »](#)

Protein Sequence: >RR214483 representing NM_001034946
 Red=Cloning site Green=Tags(s)

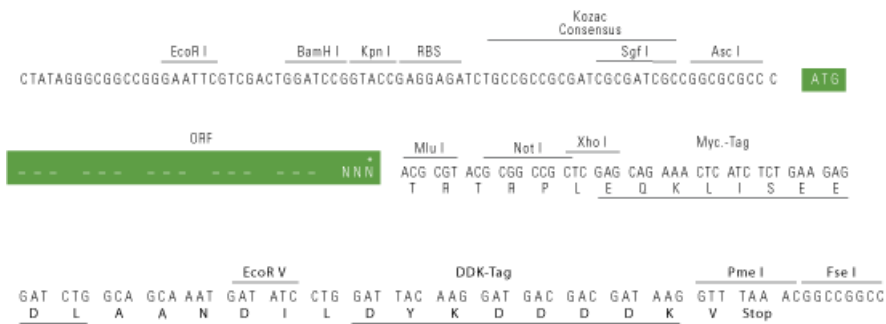
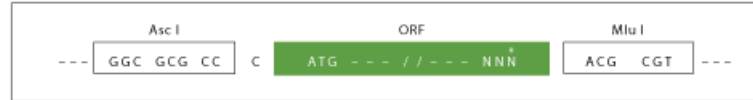
MTQLGFLFLIVATRGGSAAKEDLETNKGTHSFFDLSRSCKEIKEENTGAQDGLYFLRTENGVIYQTFCDMTTAGGGWTLVASVHENNMGGKCTVGDWRSSQQGNRADYPEGDGNWANYNTFGSAEGATSDDYKNPGYFDIQAENLGIWHVPNNSPLHSWRNSLLRYRTFTGFLQHLGHNLFGLYQKYPVKYGEKWCWDNGPALPVVYDFGDAQKTASYSPYGQKEFTAGFVQFRVYNNERAASALCAGMKVTGCNSEAHCIGGGGFFPEGNPLQC
 GDFGAFDWNWGYGTHIGYSSSREITEAAVLLFYR

TRTRPLEQKLISEEDLAANDILDYKDDDDKV

Restriction Sites: AscI-MluI

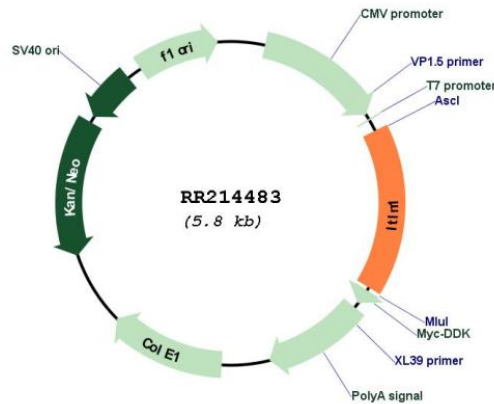
Cloning Scheme:

Cloning sites used for ORF Shuttling:



* The last codon before the Stop codon of the ORF

Plasmid Map:



ACCN: NM_001034946

ORF Size: 939 bp

OTI Disclaimer:	The molecular sequence of this clone aligns with the gene accession number as a point of reference only. However, individual transcript sequences of the same gene can differ through naturally occurring variations (e.g. polymorphisms), each with its own valid existence. This clone is substantially in agreement with the reference, but a complete review of all prevailing variants is recommended prior to use. More info
OTI Annotation:	This clone was engineered to express the complete ORF with an expression tag. Expression varies depending on the nature of the gene.
Components:	The ORF clone is ion-exchange column purified and shipped in a 2D barcoded Matrix tube containing 10ug of transfection-ready, dried plasmid DNA (reconstitute with 100 ul of water).
Reconstitution Method:	<ol style="list-style-type: none"> 1. Centrifuge at 5,000xg for 5min. 2. Carefully open the tube and add 100ul of sterile water to dissolve the DNA. 3. Close the tube and incubate for 10 minutes at room temperature. 4. Briefly vortex the tube and then do a quick spin (less than 5000xg) to concentrate the liquid at the bottom. 5. Store the suspended plasmid at -20°C. The DNA is stable for at least one year from date of shipping when stored at -20°C.
RefSeq:	NM_001034946.1 , NP_001030118.1
RefSeq Size:	1143 bp
RefSeq ORF:	942 bp
Locus ID:	498284
Cytogenetics:	13q24
MW:	34.5 kDa