

Product datasheet for RR214473

Plau (NM_013085) Rat Tagged ORF Clone

Product data:

Product Type:	Expression Plasmids
Product Name:	Plau (NM_013085) Rat Tagged ORF Clone
Tag:	Myc-DDK
Symbol:	Plau
Synonyms:	UPAM
Vector:	pCMV6-Entry (PS100001)
E. coli Selection:	Kanamycin (25 ug/mL)
Cell Selection:	Neomycin
ORF Nucleotide Sequence:	>RR214473 representing NM_013085 Red=Cloning site Blue=ORF Green=Tags(s)

TTTTGTAATACGACTCACTATAGGGCGCCGGAATTCGTCGACTGGATCCGGTACCGAGGAGATCTGCC
GCC**CGGATCGCC**

ATGAGAGTCTGGCTTGCAGCCTGTTCTCTGCGCCTTGGTGGCGCACTCTGAAGGTGGCAGTGAACCTG
GAGCTTCTGATGAATCAAACGTGGCTGTCAGAACGGAGGAGTATGTGTCTCTACAAGTACTTCTCCAG
CATTTCGAAGATGCAGCTGCCAAAGAAATTCAAAGGGGAGCACTGTGAGATAGATACATCAAAAACCTGC
TATCATGGAAATGGTCAATCTTACCGAGGAAAGGCAATACTGACACCAAGGCCGGCCCTGCCTGGCCT
GGAATTCACCCGCTGTCCTTCAGCAAACCTACAATGCTCACAGATCCGATGCTCTTAGCCTAGGCCCTGGG
GAAACACAATTACTGCAGGAACCCCGACAACAGAGGGCGACCCTGGTGTATGTGCAAAATGGCCTAAAG
CAGTTTGTCCAAGATGCATGGTGCAGGACTGCTCTCAGCAAAAAGCCTTCTTCTACTGTAGACCAAC
AAGGGTCCAGTGTGGCCAGAAGGCTCTAAGGCCCGCTTCAAGATCGTTGGGGGAGAATCACTGTTCGT
TGAGAACCAGCCCTGGTTTGCAGCCATCTACCTGAAGAATAAGGGAGGAAGCCCTCCCTCCTTTAAATGT
GGTGGGAGCCTCATCAGTCTTGTGGTTCAGTGAAGCGGAACCTATAACCCGGAGAGATGAAGTTTGAGGT
AAGAGTACGTTGTCTACCTGGTTCAGTGAAGCGGAACCTATAACCCGGAGAGATGAAGTTTGAGGT
GGAGCAGCTCATCTTGCACGAAGACTTCAGCGACGAAACTCTGGCCTTCCATAATGACATAGCCTTGCTG
AAGATACGTACACGACGGGCAATGCGCACAGCCATCCAGGACCATACAGACCATCTGCCTGCCCCCGA
GGTTTGGTGTGCTCCGTTTGGTTCAGACTGTGAGATCACTGGCTTCGGACAAGAGAGTGCCACTGACTA
TTTCTATCCGAAGGACCTGAAAATGTCAGTTGTAAGATTATTTCTCACGAACAGTGCAAGCAGCCTCAC
TACTATGGCTCTGAAATTAATTAAAAATGCTGTGTGCTGCTGACCCAGAGTGGAACAGATTCTGCT
CGGGAGATTGAGGAGCCTCTTATCTGTAACATCGATGGCCGCCAACTCTGAGCGGGATTGTGAGCTG
GGGCAGTGGATGTGCAGAGAAAAACAAGCCTGGTGTCTACACGAGGTCTCATACTTCTGAACTGGATT
CAGTCCCACATTGAGAAGAGAATGGCCTAGCCTTC

ACGCGTACGCGGCCGCTCGAGCAGAAACTCATCTCAGAAGAGGATCTGGCAGCAAATGATATCCTGGATT
ACAAGGATGACGACGATAAGGTTTAA



[View online »](#)

Protein Sequence: >RR214473 representing NM_013085
 Red=Cloning site Green=Tags(s)

MRVWLASLFLCALVAHSEGGSELGASDESNCGCQNGGVCVSYKYFSSIRRCSCPCKFKGEHCEIDTSKTC
 YHNGQSYRGKANTDTKGRPCLAWNPAVLQQTYNHRSDALSLGLGKHNYCRNPDNRRPWCYVQIGLK
 QFVQECMVQDCSLSKKPSSTVDQQGFQCGQKALRPRFKIVGGFEVTVVENQPWFAAIYLKKNKGGSPPSFKC
 GGSLISPCWVASATHCFVNQPKKEEYVVYLQSKRNSYNPGENKFEVEQLILHEDFSDETLAFHNDIALL
 KIRTSTGQCAQPSRTIQTIICLPPRFGDAPFGSDCEITGFQESATDYFYPKDLKMSVVKIISHEQCKQPH
 YYGSEINYKMLCAADPEWKTDCSCGDSGGPLICNIDGRPTLSGIVSWGSGCAEKNKPGVYTRVSYFLNWI
 QSHIGEENGLAF

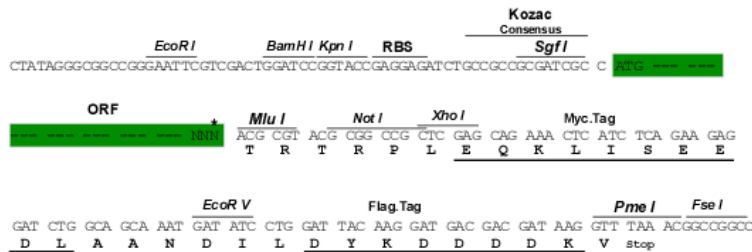
TRTRPLEQKLISEEDLAANDILDYKDDDDKV

Restriction Sites:

SgfI-MluI

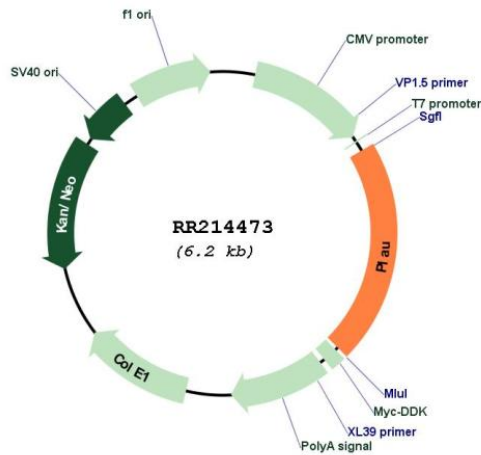
Cloning Scheme:

Cloning sites used for ORF Shuttling:



* The last codon before the Stop codon of the ORF

Plasmid Map:



ACCN:

NM_013085

ORF Size:	1296 bp
OTI Disclaimer:	The molecular sequence of this clone aligns with the gene accession number as a point of reference only. However, individual transcript sequences of the same gene can differ through naturally occurring variations (e.g. polymorphisms), each with its own valid existence. This clone is substantially in agreement with the reference, but a complete review of all prevailing variants is recommended prior to use. More info
OTI Annotation:	This clone was engineered to express the complete ORF with an expression tag. Expression varies depending on the nature of the gene.
Components:	The ORF clone is ion-exchange column purified and shipped in a 2D barcoded Matrix tube containing 10ug of transfection-ready, dried plasmid DNA (reconstitute with 100 ul of water).
Reconstitution Method:	<ol style="list-style-type: none">1. Centrifuge at 5,000xg for 5min.2. Carefully open the tube and add 100ul of sterile water to dissolve the DNA.3. Close the tube and incubate for 10 minutes at room temperature.4. Briefly vortex the tube and then do a quick spin (less than 5000xg) to concentrate the liquid at the bottom.5. Store the suspended plasmid at -20°C. The DNA is stable for at least one year from date of shipping when stored at -20°C.
RefSeq:	NM_013085.3 , NP_037217.3
RefSeq Size:	2355 bp
RefSeq ORF:	1299 bp
Locus ID:	25619
Cytogenetics:	15p16
MW:	47.9 kDa
Gene Summary:	displays a post-transcriptional increase in enzyme levels in chemically induced mammary carcinoma; may play a role in tumor invasion and metastasis [RGD, Feb 2006]