

## Product datasheet for **RR214464**

### Srsf9 (NM\_001009255) Rat Tagged ORF Clone

#### Product data:

**Product Type:** Expression Plasmids  
**Product Name:** Srsf9 (NM\_001009255) Rat Tagged ORF Clone  
**Tag:** Myc-DDK  
**Symbol:** Srsf9  
**Synonyms:** Sfrs9  
**Vector:** pCMV6-Entry (PS100001)  
**E. coli Selection:** Kanamycin (25 ug/mL)  
**Cell Selection:** Neomycin  
**ORF Nucleotide Sequence:** >RR214464 representing NM\_001009255  
**Red=Cloning site Blue=ORF Green=Tags(s)**

TTTTGTAATACGACTCACTATAGGGCGGCCGGAATTCGTCGACTGGATCCGGTACCGAGGAGATCTGCC  
GCC**CGATCGCC**

ATGTCGGGCTGGGCGGACGAGCGCGGGTGAGGGCGACGGGCGCATCTACGTGGCAACCTTCGACCG  
ACGTGCGTGAGAAGGACCTCGAGGATCTGTTTTACAAGTACGGTCGCATCCGCGAGATTGAGCTCAAGAA  
CCGGCACGGCCTCGTGCCCTTCGCCTTCGTGCGCTTCGAGGACCCGCGAGATGCTGAGGATGCCATCTAT  
GGAAGAAACGGTTATGACTACGGCCAGTGTGACTCCGGGTGGAATCCCCAGGGCTTACGAGGTCGGG  
GAGGGTGGCCCCGAGCCTCGAGGAACGGGCTCCTACAAGACGATCAGATTTCCGAGTCTTGTTTCAGG  
GCTTCTCCATCCGGCAGCTGGCAGGACCTGAAGGATCACATGCGCGAAGCTGGGGATGTCTGTTACGCA  
GACGTACAGAAGGACGGAATGGGGATGTTGAATATTTGAGGAAAGAAGACATGGAATA TGCTCTGCGGA  
AACTGGATGACACCAAATCCGCTCTCACGAGGGTGAGACTTCGTACATCCGGGTGTATCCTGAGAGGGG  
CACCAGCTATGGCTGCTCGAGGTCGCGGTCCGGGTCAGGGCCGTGACTCTCCATACCAAAGCCGGGGC  
TCGCCACACTACTTCTCCTCCGTT CAGGCCCTAC

**ACGCGT**ACGCGGCCGCTCGAGCAGAAACTCATCTCAGAAGAGGATCTGGCAGCAAATGATATCCTGGATT  
ACAAGGATGACGACGATAAGGTTTAA



[View online »](#)

**Protein Sequence:** >RR214464 representing NM\_001009255  
 Red=Cloning site Green=Tags(s)

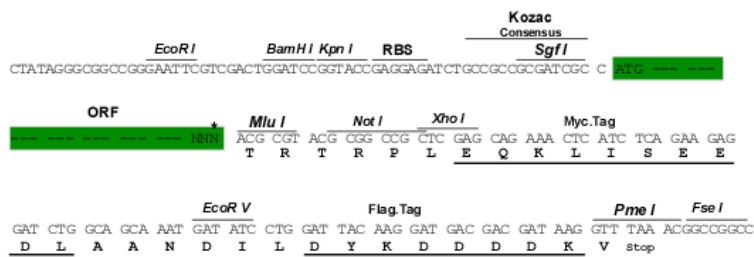
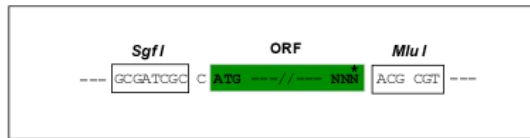
MSGWADERGGEGDGRIYVGNLPTDVREKDLDFYKYGRIREIELKNRHGLVPPAFVRFEDPRDAEDIAIY  
 GRNGYDYGQCLRVEFPFRAYGGRGGWPRASRNGPPTRRSDFRVLVSLPSSGSWQDLKDHMREAGDVCYA  
 DVQKDGGMVVEYLKEDMEYALRKLDDTKFRSHEGETSYIRVYPERGTSYGCSRSRSGSRGRDSPYQSRG  
 SPHYFSPFRPY

TRTRPLEQKLISEEDLAANDILDYKDDDDKV

**Restriction Sites:** SgfI-MluI

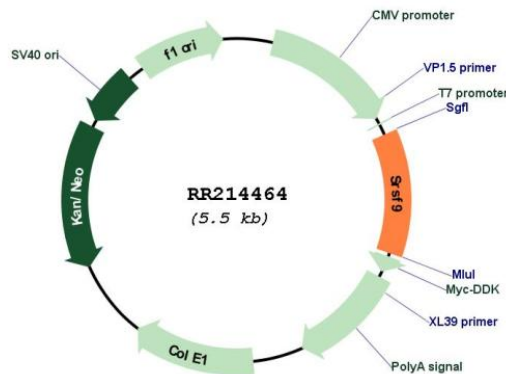
**Cloning Scheme:**

Cloning sites used for ORF Shuttling:



\* The last codon before the Stop codon of the ORF

**Plasmid Map:**



**ACCN:** NM\_001009255

**ORF Size:** 663 bp

<b>OTI Disclaimer:</b>	The molecular sequence of this clone aligns with the gene accession number as a point of reference only. However, individual transcript sequences of the same gene can differ through naturally occurring variations (e.g. polymorphisms), each with its own valid existence. This clone is substantially in agreement with the reference, but a complete review of all prevailing variants is recommended prior to use. <a href="#">More info</a>
<b>OTI Annotation:</b>	This clone was engineered to express the complete ORF with an expression tag. Expression varies depending on the nature of the gene.
<b>Components:</b>	The ORF clone is ion-exchange column purified and shipped in a 2D barcoded Matrix tube containing 10ug of transfection-ready, dried plasmid DNA (reconstitute with 100 ul of water).
<b>Reconstitution Method:</b>	<ol style="list-style-type: none"><li>1. Centrifuge at 5,000xg for 5min.</li><li>2. Carefully open the tube and add 100ul of sterile water to dissolve the DNA.</li><li>3. Close the tube and incubate for 10 minutes at room temperature.</li><li>4. Briefly vortex the tube and then do a quick spin (less than 5000xg) to concentrate the liquid at the bottom.</li><li>5. Store the suspended plasmid at -20°C. The DNA is stable for at least one year from date of shipping when stored at -20°C.</li></ol>
<b>RefSeq:</b>	<a href="#">NM_001009255.1</a> , <a href="#">NP_001009255.1</a>
<b>RefSeq Size:</b>	1120 bp
<b>RefSeq ORF:</b>	666 bp
<b>Locus ID:</b>	288701
<b>UniProt ID:</b>	<a href="#">Q5PPI1</a>
<b>Cytogenetics:</b>	12q16
<b>MW:</b>	25.5 kDa
<b>Gene Summary:</b>	Plays a role in constitutive splicing and can modulate the selection of alternative splice sites. Represses the splicing of MAPT/Tau exon 10 (By similarity).[UniProtKB/Swiss-Prot Function]