

## Product datasheet for **RR214445**

### **Dyrk2 (NM\_001108100) Rat Tagged ORF Clone**

#### **Product data:**

Product Type:	Expression Plasmids
Product Name:	Dyrk2 (NM_001108100) Rat Tagged ORF Clone
Tag:	Myc-DDK
Symbol:	Dyrk2
Vector:	pCMV6-Entry (PS100001)
E. coli Selection:	Kanamycin (25 ug/mL)
Cell Selection:	Neomycin



[View online »](#)

**ORF Nucleotide Sequence:**

>RR214445 representing NM\_001108100  
 Red=Cloning site Blue=ORF Green=Tags(s)

TTTTGTAATACGACTCACTATAGGGCGGCCGGAATTCGTCGACTGGATCCGGTACCGAGGAGATCTGCC  
 GCC**CGCATCGCC**

ATGAATGACCACCTCCACATCAGCCACAGCCACGGACAGATCCAGGTTCCAGCAGCTGTTCCGAGGACAACA  
 GTAACAAAAGGACAGTGCTCACAACCCAACCAATGGGCTTACGACGGTGGGCAAGACGGGCTTGCCTGT  
 GGTGCCTGAGCGGCAGCTGGAGAGCATTACAGACGGCAGGGGAGTTCCACCTCTCTGAAGTCCATGGAA  
 GGCATGGGGAAGGTAAAAGCCAGCCCCATGACACCTGAACAAGCGATGAAGCAATACATTCAAAAACCTCA  
 CAGCCTTCCGAACACCACGAGATTTTCAGCTACCCCGAAATCTACTTCTTGGGTCCAAATGCAAAAAGCG  
 CCAAGGCATGACAGGTGGACCAACAATGGCGTTATGATGACGACCAGGGATCATACGTGCAGGTGCC  
 CACGATCACGTGGCTTACAGGTACGAGGTCTCAAAGTCATCGGAAGGGGAGCTTTGGGCAGTGGTCA  
 AGGCCTATGACCACAAAGTCCACCAGCAGTGGCCCTGAAGATGGTGCAGAACGAGAAGCGCTTCCACCG  
 GCAGGCGGCAGAGGAGATCCGGATCTTGAACACCTACGGAAGCAGGACAAGACAACACCATGAACGTC  
 ATTCACATGCTGGAGAATTCACCTTCCGCAACCATATCTGCATGACGTTTCGAGCTGCTGAGCATGAACC  
 TCTATGAGCTCATCAAGAAGAATAAGTTCCAAGGCTTCAGCCTGCCTCTGGTGCAGCAAGTTCGCCCACTC  
 CATTCTGCAGTGCTTGGATGCTTTGCACAAAACAGAATAATCCACTGTGACCTTAAGCCCGAGAACATT  
 TTGTTAAAGCAGCAGGGTTCGGAGCAGTATAAAGTGATTGACTTTGGCTCCAGTTGTTATGAGCACCAGC  
 GCGTCTACACGTACATCCAGTCGCGCTTTTACCGGGCTCCGGAAGTGATCCTTGGAGCCAGGTATGGCAT  
 GCCCATGACATGTGGAGCCTGGGTTGCATCCTCGCGAACTTCTGACGGGTTACCCCTCTTGCCTGGG  
 GAGGATGAAGGGGACCAGCTAGCTTGTATGATCGAGCTTTGGGCATGCCCTCTCAAAAACCTCTTTC  
 TTCCAAAACGAGCAAAAATTTCTGTAGCTCTAAGGGTTACCCCGATACTGCAGTGTACAACTCTTTC  
 GGATGGCTCTGTGGTACTCAACGGAGGACAGATCCCGGAGAGGAACTGAGGGGTCGCCAGAGAGCAGA  
 GAGTGGGGGAATGCACTGAAGGGATGTGATGATCCTCTTTTCTTGGACTTCTTAAAACAGTGTGGAGT  
 GGGATCCCGCGGTCCGAATGACCCCGGACAGGCTCTACGGCACCCGTGGCTTAGGAGGCGTTTGCCAAA  
 GCCTCCGACCGGGGAGAAGACTGCGGTGAAGAGGGTCACAGAGAGTACTGGTGTATCACCTCCATTTCC  
 AAGTTACCTCCACCTTCCAGCTCAGCTTCCAAGCTGAGGACTAATTTGGCACAGATGACAGATGCCAATG  
 GGAATATTCAGCAGAGGACAGTGTGCCGAACTCGTTAGC

**ACGCGT**ACGCGGCCGCTCGAGCAGAACTCATCTCAGAAGAGGATCTGGCAGCAAATGATATCCTGGATT  
 ACAAGGATGACGACGATAAGGTTTAA

**Protein Sequence:**

>RR214445 representing NM\_001108100  
 Red=Cloning site Green=Tags(s)

MNDHLHISHSHGQIQVQQLFEDNSNKRVTLTTPNGLTTVGKTLPLVPPERQLESIHRRQGSSTSLKSME  
 GMGKVKASPMTPEQAMKQYIQKLTA FEHHEIFSYPEIYFLGPNAKKRQGMTGGPNNGGYDDQGSYVQVP  
 HDHVAYRYEVLKVIKGSFQVVKAYDHKVHQHVALKMRNEKRFHRQAAEEIRILEHLRKQDKDNTMNV  
 IHMLENFTFRNHICMTFELLSMNLVELIKKNKFQGFSLPLVRKFAHSILQCLDALHKNRIIHCDLKPENI  
 LLKQQGRSSIKVIDFGSSCYEHQRVYTYIQSRFYRAPEVILGARYGMPIDMWSLGCILAELLTGYP LLPG  
 EDEGDQLACMIELLGMP SQLLDASKRAKNFVSSKGYPRYCTVTTLSDGSVVLNNGRSRRGKLRGPPESR  
 EWGNALKGCD DPLFLDFLKQCLEWDP AVRMPGQALRHPWLRRLPKPPTGEKTA VKRVTESTGAITSIS  
 KLPPSSSASKLRTNLAQMTDANGNIQQRTVLPKLV

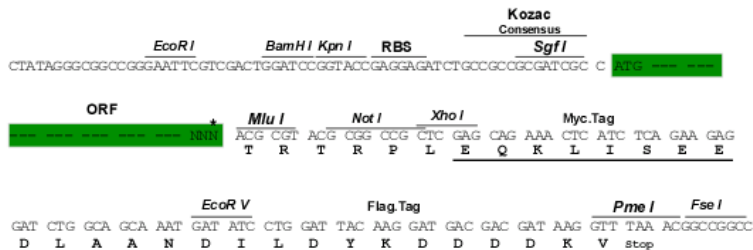
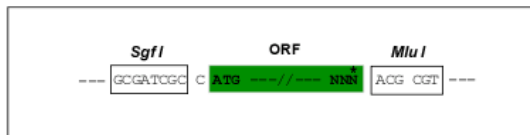
**TR**TRPLEQKLISEEDLAANDILDYKDDDDKV

**Restriction Sites:**

SgfI-MluI

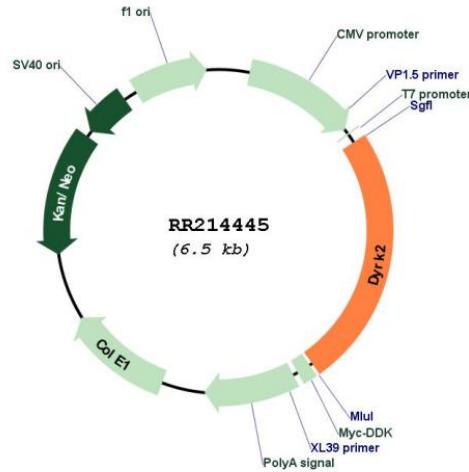
Cloning Scheme:

Cloning sites used for ORF Shuttling:



\* The last codon before the Stop codon of the ORF

Plasmid Map:



ACCN: NM\_001108100

ORF Size: 1581 bp

OTI Disclaimer: The molecular sequence of this clone aligns with the gene accession number as a point of reference only. However, individual transcript sequences of the same gene can differ through naturally occurring variations (e.g. polymorphisms), each with its own valid existence. This clone is substantially in agreement with the reference, but a complete review of all prevailing variants is recommended prior to use. [More info](#)

OTI Annotation: This clone was engineered to express the complete ORF with an expression tag. Expression varies depending on the nature of the gene.

Components: The ORF clone is ion-exchange column purified and shipped in a 2D barcoded Matrix tube containing 10ug of transfection-ready, dried plasmid DNA (reconstitute with 100 ul of water).

**Reconstitution Method:**

1. Centrifuge at 5,000xg for 5min.
2. Carefully open the tube and add 100ul of sterile water to dissolve the DNA.
3. Close the tube and incubate for 10 minutes at room temperature.
4. Briefly vortex the tube and then do a quick spin (less than 5000xg) to concentrate the liquid at the bottom.
5. Store the suspended plasmid at -20°C. The DNA is stable for at least one year from date of shipping when stored at -20°C.

**RefSeq:** [NM\\_001108100.1](#), [NP\\_001101570.1](#)

**RefSeq Size:** 5705 bp

**RefSeq ORF:** 1584 bp

**Locus ID:** 314862

**Cytogenetics:** 7q22

**MW:** 59.7 kDa