

## Product datasheet for **RR214439**

### **Il13ra1 (NM\_145789) Rat Tagged ORF Clone**

#### Product data:

**Product Type:** Expression Plasmids  
**Product Name:** Il13ra1 (NM\_145789) Rat Tagged ORF Clone  
**Tag:** Myc-DDK  
**Symbol:** Il13ra1  
**Synonyms:** MGC105309  
**Vector:** pCMV6-Entry (PS100001)  
**E. coli Selection:** Kanamycin (25 ug/mL)  
**Cell Selection:** Neomycin  
**ORF Nucleotide Sequence:** >RR214439 representing NM\_145789  
**Red=Cloning site Blue=ORF Green=Tags(s)**

TTTTGTAATACGACTCACTATAGGGCGCCGGAATTCGTCGACTGGATCCGGTACCGAGGAGATCTGCC  
GCC**CGGATCGCC**

ATGGCGCGCCAGCGTGGCTGGGCGAGCTGTTGGTGTCTGCTGCTTTTTGCCGCCTCCCTGGACCAAGTTG  
CCCTGGCCACAGAAGTTCAGCCACCTGTAACGAATTTGAGTGTCTCTGTGCAAAATCTCTGCACAATAGT  
GTGGACATGGAGTCTCCTGAGGGAGCCAGTCCAATTGCAGTCTCAGATATTTAGTCATTTTGTATGAC  
CAACAGGATAAGAAAATTGCTCCTGAAACTCGTCGTAAAAAGGAATTACCCTAAATGAGAAAATCTGTC  
TGCAAGTGGGGTCCCAGTGTAGCACCAATGAAAGTGAAGCCTAGCCCTTTGGTAAAAAGTGCATCTC  
ACCCCCGAAGGGGATCCTGAGTCTGCTGTGACCGAACTGCAGTGCATTTGGCACAACCTGAGCTATATG  
AAGTGTTCCTGGCTCCCTGGAAAGAATACAAGCCCGGACACCAACTATACTCTTTACTATTGGTACAGCA  
GCCTGGGAAAAGTCTTCAATGTGAAAACATCCACAGAGAAGGTCAACACATTGGTTGTTCTTTAAATT  
GACTAAAGTGGAACTAATTATGAACATCATAACATTGAGATAATGGTCAAGGATAATGCTGGGAAAATT  
AGGCCATCCTACAAAATAGTGTCTTCACTTCCAATGTGAAACCCGGTCCCTCCACATATTAACATCTTT  
TCCTCAAAAATGGTGCCTTATTCGTGCAGTGAAGAACCACAGAATTTGAGTGCAGATGTTTGTCTTA  
TGAAGTAGAAGTCAATAGCACTCAAAGTACAGCTATAATTCTAACTCTTTAGAGGTTGAAGAGGACAAA  
TGCCAGAATTCTGAATTTGATAGAAACATGGAGGGTGAAGTTGTTTCATATCTCCCGGTGTTCTTGCCA  
ACACTGTCTACACAGTCAAGAGTCAAAACAAACAGTTATGCTTTGATGACAACGACCTGTGGAG  
TAATTGGAGCGAAGCGTGTAGTATAGGTAAGGAGCCGAATTCACCTTCTACACCACCATGTTACTCATC  
ATTCCAGTCTTTGTGCGAGTGGTAATCATAATTCTCTTTTTTACCTGAAAAGGCTTAAGATCATTATAT  
TTCTCCAATTCCTGATCCTGGCAAGATTTTTAAAGAAATGTTTGGAGACCAGAATGATGATACCCTGCA  
CTGAAAAAGTATGACATCTATGAGAAACAATCGAAAGAAGAAACCGACTCTGTAGTGTGATAGAAAAC  
CTGAAGAAAGCGGCTCCA

**ACGCGT**ACGCGGCGCTCGAGCAGAAACTCATCTCAGAAGAGGATCTGGCAGCAAATGATATCCTGGATT  
ACAAGGATGACGACGATAAGGTTTAA



**Protein Sequence:** >RR214439 representing NM\_145789  
 Red=Cloning site Green=Tags(s)

MARPAWLGELLVLLLFAASLDQVALATEVQPPVTNL SVSVENLCTIVWTSWSPPEGASPNCSLRYFSHFDD  
 QQDKKIAPETRRKKELPLNEKICLQVGSQCSTNESEKPSLVKKCISPPEGDPESAVTELQCIWHNLSYM  
 KCSWLP GKNTSPDTNYTLYYWYSSLGKSLQCENIHREGQIHGCSFKLTKVESNYEHNNIQIMVKDNAGKI  
 RPSYKIVSFTSNVKPGPPHIKHLFLKNGALFVQWKNPQNFSSRCLSYEVEVNSTQTDSYNSNSLEVEEDK  
 CQNSEFDRNMEGASCFISPGVLANTVYTVRVRVKTNKLCFDDNDLWSNWEALSIGKEPNSTFYTTMLLI  
 IPVFAVAVVIIILLFYLKRLKIIIFPPIPDPGKIFKEMFGDQDDTLHWKKYDIYEKQSKKEETDSVVLIIEN  
 LKKAAP

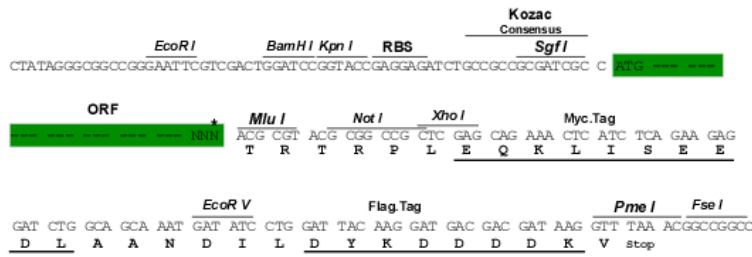
TRTRPLEQKLISEEDLAANDILDYKDDDDKV

**Restriction Sites:**

SgfI-MluI

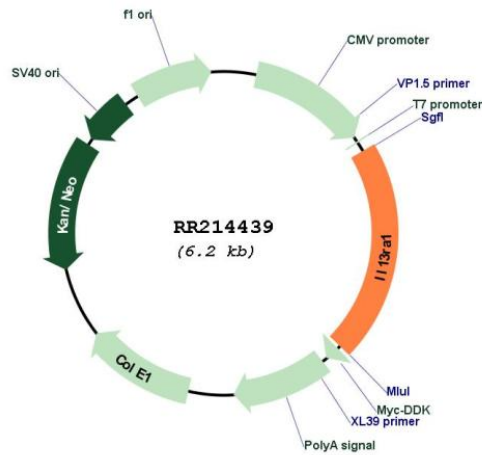
**Cloning Scheme:**

Cloning sites used for ORF Shuttling:



\* The last codon before the Stop codon of the ORF

**Plasmid Map:**



**ACCN:**

NM\_145789

<b>ORF Size:</b>	1278 bp
<b>OTI Disclaimer:</b>	The molecular sequence of this clone aligns with the gene accession number as a point of reference only. However, individual transcript sequences of the same gene can differ through naturally occurring variations (e.g. polymorphisms), each with its own valid existence. This clone is substantially in agreement with the reference, but a complete review of all prevailing variants is recommended prior to use. <a href="#">More info</a>
<b>OTI Annotation:</b>	This clone was engineered to express the complete ORF with an expression tag. Expression varies depending on the nature of the gene.
<b>Components:</b>	The ORF clone is ion-exchange column purified and shipped in a 2D barcoded Matrix tube containing 10ug of transfection-ready, dried plasmid DNA (reconstitute with 100 ul of water).
<b>Reconstitution Method:</b>	<ol style="list-style-type: none"><li>1. Centrifuge at 5,000xg for 5min.</li><li>2. Carefully open the tube and add 100ul of sterile water to dissolve the DNA.</li><li>3. Close the tube and incubate for 10 minutes at room temperature.</li><li>4. Briefly vortex the tube and then do a quick spin (less than 5000xg) to concentrate the liquid at the bottom.</li><li>5. Store the suspended plasmid at -20°C. The DNA is stable for at least one year from date of shipping when stored at -20°C.</li></ol>
<b>RefSeq:</b>	<a href="#">NM_145789.2</a> , <a href="#">NP_665732.2</a>
<b>RefSeq Size:</b>	3681 bp
<b>RefSeq ORF:</b>	1281 bp
<b>Locus ID:</b>	252963
<b>Cytogenetics:</b>	Xq35
<b>MW:</b>	48.5 kDa
<b>Gene Summary:</b>	mediates interleukin 13 activity [RGD, Feb 2006]