

Product datasheet for **RR214398**

Dmrta2 (NM_001107951) Rat Tagged ORF Clone

Product data:

Product Type:	Expression Plasmids
Product Name:	Dmrta2 (NM_001107951) Rat Tagged ORF Clone
Tag:	Myc-DDK
Symbol:	Dmrta2
Vector:	pCMV6-Entry (PS100001)
E. coli Selection:	Kanamycin (25 ug/mL)
Cell Selection:	Neomycin



[View online »](#)

ORF Nucleotide Sequence:

>RR214398 representing NM_001107951
 Red=Cloning site Blue=ORF Green=Tags(s)

TTTTGTAATACGACTCACTATAGGGCGGCCGGGAATTCGTCGACTGGATCCGGTACCGAGGAGATCTGCC
 GCC**CGGATCGCC**

ATGGAGCTGCGCTCGGAGCTGCCAGCGTGCCCGCGCGCGACAGCAGCAGCGACAGCGGACCAC
 CCGTGGCATCCGTGGCGTCCGTGGCTGCGGCGGACAGTCCCGCAGCATCGCTACCACTGAGCGTGGCCGG
 AGGCTTGCTGCGGGCGCCCGCTGCTGTTGAGGGCAGCGGAGAAGTACCCGCGGACCCCAAGTGCAGCG
 CGCTGCCGCAACCACGGAGTGGTGTCCGCGCTCAAGGGCCACAAGCGCTACTGCCGCTGGAAGGACTGCC
 TGTGCGCCAAGTGCACGCTCATCGCCGAGCGCCAGCGCTCATGGCGGCCAGGTGGCGTTGCGCAGGCA
 GCAGGCGCAGGAGGAAAACGAGGCACGCGAGTTGCAACTGCTGTACGGCACTGCCAGGGCTGGCGCTG
 GCCCGCCCAACGGCATCATCCACCGCGGCCAGCTTACGAAGTCTTTGGCTCGGTTTGCGCCACCGACG
 GCGGGGGCGCGGAGCTGGAGCGCCCGCGGGAGTGCAGGGGGCGCTGGGGGCGCAGGGGGCGCAGAGGC
 CAAGTTGAGAAGTTTATCTGTTTCCCAAGACGCTACTTCAGGCCGGCCGCCAGACAGTCCCGAGCCG
 CGCCAGGGAAGCCCTTGTGCGCCGACGGCGGACTCAGGTCCCGGGACCTCGTCCCGGAGGTGCGGC
 CCGGTTACAGGCTCGGAGAACGGAGATGGCGAGTCTTTTCCGGGTGCGCTCTGGCCCGTGCCTCCAAGGA
 GGCGGGTGGCAGCTGTCTGGAGCGCGGGCGCCAGCGGTGGCGGCGAGGAGGACAGCCCGGCTCCTCC
 AGCCCCCTGGGTTTCGGAATCGGGCTCGGAAGCTGACAAAGAAGAAGCCGAGGCGCCACCGACTCCAGGGC
 TGGGCGCGGGCCGGGGCCGCGGAGCGGACGCGCGCTGGACATCTTGACGCGTGTCTTCCCGGGCCACCG
 GAGAGGCGTCTGGAGCTGGTGTTCAGGGCTGTGGCGGCGACGTGGTGCAGGCCATTGAGCAGGTGCTC
 AACCAACCGCGGAGGCTGGCGGCCGCTGGGCCCGCCGCGCCGCTGGAGAAAGCCGCGGTGAGCG
 CGGCCGCGGGTGGAGGACGCGTGGCCCGGACGCGTGGAGGACGCTAGGGGCACGGGGCCCGGCTGC
 CCTCTCCGCTGCAGACCGGGCCCGCAGCGCCCGCCACACAGACCTTGTGGCCGGGGCCATGACGCC
 CGGCGCGTGGGCTCGCTCAGCAGCGGTCGCGCTTCTCGCTCTGCAGCCCAACGCCAGCCACTTCGGC
 GCCAGCGGGGCGCTACCCTCTGGGCGCGCGCTCGGCCTGAGCCCGCTGCGCCTGGCCTACTCCGCGAG
 CAGCGGCCACAGCCGGTCTGGCCTTATGGCGCCCTACTCCAGGCCGGCTGGTGGCCACGCTCGG
 CTTCCGGCCGCCATGGACTACGCCTTACGCGACCTCATGCGCGACCGCTCGGCCCGCCCGCCCGCGC
 GTGCACAAGGAGCCGGTTACGGGGCGGGCTGTACGGGCCATGGTCAACGGCACCCC

**CTCGAGCAGAAACTCATCTCAGAAGAGGATCTGGCAGCAATGATATCCTGGATTACAAGGATGACGACG
 ATAAGGTTTAA**

Protein Sequence:

>RR214398 representing NM_001107951
 Red=Cloning site Green=Tags(s)

MELRSELPSVPGAATAAATATGPPVASVASVAAAAAASLPVSVAGLLRAPPLLLRAAEKYPRTPKCA
 RCRNHGVVSALKGHKRYCRWKDCLCAKCTLIAERQVRMAAQVALRRQQAQEENEARELQLLYGTAEGLAL
 AAANGIIPRPAYEVFGSVCATDGGGPGAGAPAGSAGGAGGAGGAEAKLQKFDLFPKTLQAGRPDSPQP
 PPGKPLSPDGADSGPGTSSPEVRPGSGSENGDGEFSGSPLARASKEAGGSCPGSAGASGGGEEDSPGSS
 SPLGSESGSEADKEEAEAAPTGLGGGPPRQRTPLDILTRVFPGHRRGVLELVLQCGGDVVQAIQVL
 NHHRRGLAAGLGAAPLEKAAVSAAAVEDAWPGRVEAARGTGSRAALSAADRARSAPAPQTLAGRGHDA
 RRAGLAQQPVRLLASAAQRQPLRRRRRGLPSGRAARPEPAAPGLLRSSGPQPRSLHGALLHGRPGAHAR
 LPAAHGLRLQRPHARPLRRRRRGAQGARLRGRAVRAHGQRHP

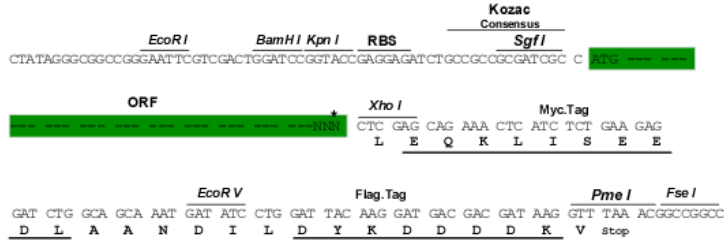
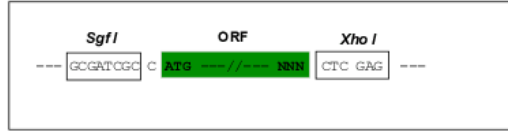
LEQKLISEEDLAANDILDYKDDDDKV

Restriction Sites:

Sgfl-XhoI

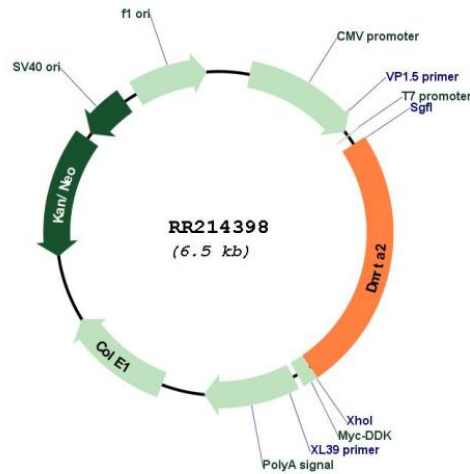
Cloning Scheme:

Cloning sites used for ORF Shuttling:



* The last codon before the Stop codon of the ORF

Plasmid Map:



ACCN: NM_001107951

ORF Size: 1599 bp

OTI Disclaimer: The molecular sequence of this clone aligns with the gene accession number as a point of reference only. However, individual transcript sequences of the same gene can differ through naturally occurring variations (e.g. polymorphisms), each with its own valid existence. This clone is substantially in agreement with the reference, but a complete review of all prevailing variants is recommended prior to use. [More info](#)

OTI Annotation: This clone was engineered to express the complete ORF with an expression tag. Expression varies depending on the nature of the gene.

Components: The ORF clone is ion-exchange column purified and shipped in a 2D barcoded Matrix tube containing 10ug of transfection-ready, dried plasmid DNA (reconstitute with 100 ul of water).

Reconstitution Method:

1. Centrifuge at 5,000xg for 5min.
2. Carefully open the tube and add 100ul of sterile water to dissolve the DNA.
3. Close the tube and incubate for 10 minutes at room temperature.
4. Briefly vortex the tube and then do a quick spin (less than 5000xg) to concentrate the liquid at the bottom.
5. Store the suspended plasmid at -20°C. The DNA is stable for at least one year from date of shipping when stored at -20°C.

RefSeq: [NM_001107951.1](#), [NP_001101421.1](#)

RefSeq Size: 2946 bp

RefSeq ORF: 1602 bp

Locus ID: 313471

Cytogenetics: 5q35

MW: 53.8 kDa