

## Product datasheet for RR214307

### Pcdh18 (NM\_001100524) Rat Tagged ORF Clone

#### Product data:

**Product Type:** Expression Plasmids  
**Product Name:** Pcdh18 (NM\_001100524) Rat Tagged ORF Clone  
**Tag:** Myc-DDK  
**Symbol:** Pcdh18  
**Synonyms:** MGC188762  
**Vector:** pCMV6-Entry (PS100001)  
**E. coli Selection:** Kanamycin (25 ug/mL)  
**Cell Selection:** Neomycin  
**ORF Nucleotide Sequence:** >RR214307 representing NM\_001100524  
Red=Cloning site Blue=ORF Green=Tags(s)

TTTTGTAATACGACTCACTATAGGGCGCCGGGAATTCGTCGACTGGATCCGGTACCGAGGAGATCTGCC  
GCC**GCGATCGCC**

ATGCACCAATAAATACTAAAATGCACCTTAGATTTCGACTTTCACTTCTGATGGCGTTTTTCAGCCAGC  
ATGTCCTGGGTAAAGATCTGAAATACAGGATTTATGAGGAGCAGAGGGTCCGGATCGGTAATTGCTAGACT  
ATCAGAAGATGTGGCTGATGTTTTACTGAAGCTACCAAATCCTTCTGCCATTCGTTTTTCGAGCCATGCCA  
CGGGGGAATTCCTCTCTCTGGTCGTAATGAGAATACCGGAGAAATCAGCATAGGGGCTAAAATCGACC  
GCGAGCAACTATGCCAAAAGAAGCTTGAAGTGTTCGATAGAGTTTGATGTGCTCACTCTGCCGACCGAGCA  
TCTGCAGCTGTTCCATATTGAAGTGGACGTGTTGGACATTAATGACAATCCCCTCAATTCTCGAGACCC  
GTCATTCCTGAGATATCGGAGAGCGCAGCAGTTGGGACTCGCATCCCTCTGGACAGTGCCTTCGACC  
CCGATGTTGGGGAAAATCCCTCCACACCTACTCGCTCTGCTAATGATTATTTAATATCGAAGTGCG  
GACCAGGACGGACGGGGCAAGTATGCTGAAGTCAATAGTGGTAAAGAGTTGGATCGGGAGCTGAAGGCT  
AGCTATGAGCTGCAGCTCACGGCCTCTGACATGGGAGTGCCTCAGAGGCTGGGTCCTCCATCCTGAAAA  
TAAGCATTTCCGATTCCAACGACAACAGCCCGCCTTTGAGCAGCCCTTACACAATAACAATCTTGA  
AAACTCCCAGTTGGAACCTTGCTCCTCGATCTAAATGCCACTGATCCTGATGAGGGCGTTAATGGGAGA  
ATTGTATATTCTTTCAGCAGCCATGTGTCTCCCAAAATATAGAGACTTTTAGGATCGACTCAGAAAGAG  
GACACTTGACTCTTTCAAGCCGGTGGATTATGAAATCACCAAGTCTATGAGATAGATGTTCAAGCCCA  
AGATCTGGGTCCCAATTCATTCTGCTCATTGCAAAATATAATTAAGGTCGTGGATGTCAATGACAAT  
AAGCCTGAAATAGCATAAACCTCATGTCCCTGGAAAAGAAGTGTCTTATGTTTTTGAAGGGGATC  
CCATTGATACATTTGTTGCTATCGTCAGGGTCAAGACAAGGATCTGGGCTGAATGGGAAATAATCTG  
TAAGTTCATGGGCATGGGCACCTTAACTTCAAGACTTATGAAAACAACCTAATCTTGACCAAT  
GCCACTCTGGATAGAGAAAAGAGATCTGAGTACAGTTTACTGTGATTGCTGAGGACAAGGGAACCCCA  
ACCTCTCTCAGTGAGACATTTTACTGTTCAAGTCAATGACATAAATGACAATCCACCTCGCTTCCAGAG  
GAGCCAATATGAATTTGCATCTCAGAGAATAATTCGCCAGGGGCGTACATCACCACAGTTACAGCCACC  
GATCCAGACCTGGGTGAAAATGGGCATGTGACATACACCATTTTGGAGAGTTTTGTCTTGGGAAGTTCCA



TTACCACGTATGTAACCATTGATCCATCCAATGGCGCCATCTATGCCCTCAGGATCTTTGATCATGAGGA  
 AGTGAGTCAGATCACTTTTGTGGTGAAGCAAGGGATGGAGGGAGTCAGAAGCAACTCTCAAGCAACACC  
 ACAGTTGTGCTGACCATCATTGACGAGAATGACAAATGTCCTGTGGTTGTAGGGCCTGCAATGCACAACA  
 AACTGCAGACATCTCCATCCCCAAGGAGTCGAAAGTGGTTCCATGTCACAAGACTAAGGGTAGTGGA  
 CAGAGACTCTGGTGCAATGCTGAATTCACCTGCTCCATAGTAGCTGGTAATGAGGAAAACATCTTTATC  
 ATAGATCCAAGGTCATGTGACATCCATACCAACGTCAGCATAGACTCCATTTCTCCACCGAATGGGCAC  
 TTTTCAGTTATCATCCAGGACAAGGGCAATCCCTCTGCACACCAAGTCCCTCTGAGGTGCATGTCTTT  
 TGAATATACAGAATCTGTGACAAGCACAGCCATGACTTCTGTGAGTCACGCATCCTTGGATGTGTCTATG  
 ATCATAATTATTTCTTAGGGGCAATCTGTGAGTGTGCTGGTATTATGGTACTGTTCCGCCACGAGGT  
 GCAATAGAGAAAAGAACACACAGGCTCTACAACGTCAGGGTGGCAGAAATCCACTTACCAGCATCATCC  
 CAAAAGGCCGTCAGGCAGATTCACAAAGGAGACATTACTGGTGGCCACCATCAATGGTACTCTGCC  
 ATCAGATCTCACCACAGATCCTCTCCATCTTATCTCCAACCTTGGAAAGGGGCGAGATGGGCAGCCGCC  
 AGAGTCACAACAGTCACCAGTCACTCAACAGTTTGGTACCATCTCTCAAACACGTCGCCAGAAATTT  
 TTCATTAGAACTACCCATGCCACTCTGCTGTTGAGCAGGTCTCACAGTCTCTCCATGCTCCACCAG  
 GGGCAATATCAGCCACGGCAAGCTTTGAGGAAACAAATATTCCAGGAGCTATAGATATGCCCTTCAAG  
 ACATGGATAAATTTAGCTTGAAGACAGTGGCCGTGGAGATAGTGAAGCAGGAGACAGTGATTATGATTT  
 GGGGCGAGATTCTCCAATAGACAGGCTCTGGGAGAAGGATTCAGTGACCTCTTCTCACTGATGGAAGA  
 ATTCCAGCAGCCATGAGGCTATGTACGGAGGAATGCAGAGTCTGGGCCACTCTGACCAGTCTGGATGC  
 CTCCACTGCCCTCGCCATCTCAGACTACAGAAGCAACATGTTTATCCCCGGAGAAGAGTTCCCGGCTCA  
 ACCTCAACAACAGCATTCTATCCGGGCTTGTATGATGACAGTCAGCCTGCCGAATCTGGGGAGAAAAA  
 AAGAGCTTTTCCACCTTTGGGAAGGATCCCTAGCGACGAGGACTCCGGGACTCTAGCACATCATCTC  
 TGCTATCAGAAATGAACAGTGTGTTCAACGCCTCTCCCGCATCCCTAGATACCTATTCTGAATGCAG  
 CGAAGTGGACGGTCCAACCTCCCTGGAACGTCGAAAGGGTCCAGCACAGGGCAAACTGGGGTTACCCA  
 CAAGGGTTGCAGCCTGGGCGAGCACACATTTTTCAGAACCCACAGCAGCTCTGGGACCCCTCTGG  
 GGACTCACTCCAGTGTGACGCTTCTTCAAGTGGTGGCAGCTATGGAGGAGATCCCTGAAAACACGA  
 GGAAGATGATTTTGAACAATGTGCTGAACCATCTTAGTGATGGGAAACACGAACTCATGGATGCCAGCGAG  
 CTGGTAGCTGAGATCAACAACTGCTTCAAGATGTCCGCCAGAGC

ACGCGTACGCGGCCGCTCGAGCAGAACTCATCTCAGAAGAGGATCTGGCAGCAATGATATCCTGGATT  
 ACAAGGATGACGACGATAAGGTTTAA

**Protein Sequence:**

>RR214307 representing NM\_001100524  
 Red=Cloning site Green=Tags(s)

MHQINTKMHRFALSLLMAFFSHDVLGKNLKYRIYEEQRVGSVIARLSEADVLLKLPNSAIRFRAMP  
 RGN SPLLVNENTGEISIGAKIDREQLCQKNLNCSEIFDVLTLPTHELQLFHIEVDVLDINDNSPQFSRP  
 VIPIEISESAAVGTRIPLDLSDAFDPDVGNSLHTYSLSANDYFNIEVRTRTDGAKYAEIIVKELDRELKA  
 SYELQLTASDMGVPQRSGSSILKISISDSNDNSPAFEQPSYTIQLLENSPVGTLTLLDLNATDPDEGVNDR  
 IVYSFSSHVSPKIIETFRIDSERGHLTLFKPVDYEITKSYEIDVQAQDLGPN SIPAHCKI I I KVVVDVNDN  
 KPEISINLMSPGKEEVSYVFEGDPIDTFVAIVRVQDKD SGLNGEII CKLHGHHFKLQKTYENNYLILTN  
 ATLDREKRSEYSLTVIAEDKGTPNLSSVRHFTVQVNDINDNPPRFQRSQYEFVISENNSPGAYITVTAT  
 DPDLGENGHVYTYILESFLVGGSSITTYVTIDPSNGAIYALRIFDHEEVSQITFVVEARDGGSQKQLSSNT  
 TVVLTIIIDENDNVPVVVGPAMHNTADISIPKGVESGFHVTRLRVVDRDSGANAEFTCSIVAGNEENIFI  
 IDPRSCDIHTNVSIDSISSTEWALSVIIQDKGNPPLHTKVLLRCMVFDTESVTSTAMTSVSHASLDVSM  
 IIIISLGAICAVLLVIMVLFATRCNREKKDTRS YNCRVAESTYQHHPKRP SRQIHKGDITLVPTINGTLP  
 IRSHRSPSSSPTLERGQMGSRQSHNSHQLNSLVTISSNHVPENF SLELTHATPAVEQVSQLLSMLHQ  
 GQYQPRPSFRGNKYSRSYRYALQMDKFLSKDSGRGDSEAGDSYDLGRDSPIDRLLGEGFSDLFLTDGR  
 IPAAMRLCTEECRVLGHSQDQWMPPLPSPSSDYRSNMFPGEFFAQPQQHSHPLGDDSDQPAESGEKK  
 KSFSTFGKDSDESDGSSSTSSLLSEMNSVFQRLLPASLDTYSECSEVDRSNSLERRKGAQGGTGGYP  
 QGVAWAASTHFQNPSTSSGTPLGTHSSVQPSKWL PAMEEIPENYEEDDFDNVNLHSDGKHELM DASE  
 LVAEINKLLQDVRQS

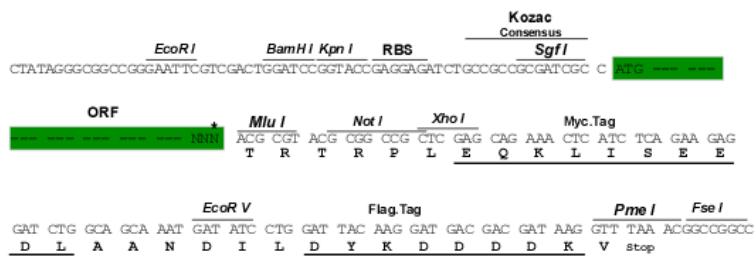
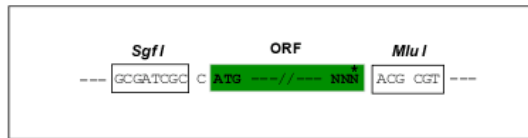
TRTRPLEQKLI SEEDLAANDILDYKDDDDKV

Restriction Sites:

SgfI-MluI

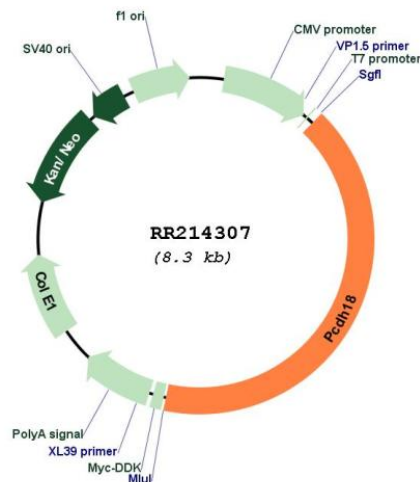
Cloning Scheme:

Cloning sites used for ORF Shuttling:



\* The last codon before the Stop codon of the ORF

Plasmid Map:



ACCN: NM\_001100524

ORF Size: 3405 bp

OTI Disclaimer: The molecular sequence of this clone aligns with the gene accession number as a point of reference only. However, individual transcript sequences of the same gene can differ through naturally occurring variations (e.g. polymorphisms), each with its own valid existence. This clone is substantially in agreement with the reference, but a complete review of all prevailing variants is recommended prior to use. [More info](#)

OTI Annotation: This clone was engineered to express the complete ORF with an expression tag. Expression varies depending on the nature of the gene.

Components: The ORF clone is ion-exchange column purified and shipped in a 2D barcoded Matrix tube containing 10ug of transfection-ready, dried plasmid DNA (reconstitute with 100 ul of water).

Reconstitution Method:

1. Centrifuge at 5,000xg for 5min.
2. Carefully open the tube and add 100ul of sterile water to dissolve the DNA.
3. Close the tube and incubate for 10 minutes at room temperature.
4. Briefly vortex the tube and then do a quick spin (less than 5000xg) to concentrate the liquid at the bottom.
5. Store the suspended plasmid at -20°C. The DNA is stable for at least one year from date of shipping when stored at -20°C.

RefSeq: [NM\\_001100524.1](#), [NP\\_001093994.1](#)

RefSeq Size: 4927 bp

RefSeq ORF: 3408 bp

Locus ID: 295027

Cytogenetics: 2q26

MW: 125.6 kDa