

Product datasheet for **RR214194**

Gbp2 (NM_133624) Rat Tagged ORF Clone

Product data:

Product Type:	Expression Plasmids
Product Name:	Gbp2 (NM_133624) Rat Tagged ORF Clone
Tag:	Myc-DDK
Symbol:	Gbp2
Synonyms:	MGC93208
Vector:	pCMV6-Entry (PS100001)
E. coli Selection:	Kanamycin (25 ug/mL)
Cell Selection:	Neomycin



[View online »](#)

ORF Nucleotide Sequence:

>RR214194 representing NM_133624
 Red=Cloning site Blue=ORF Green=Tags(s)

TTTTGTAATACGACTCACTATAGGGCGGCCGGAATTCGTCGACTGGATCCGGTACCGAGGAGATCTGCC
 GCC**CGGATCGCC**

ATGGACATGGCCTCGGAGATCCACATGTTACAACCCATGTGCCTCATTGAGAACACTGAGGCTCACCTAG
 TGATCAACCAGGAGGCTCTGAGGATTTGTCTGCCATCAACCAGCCTGTGGTGGTGGCAATCGTGGG
 CCTCTACCGCACAGGCAATCCTACCTGATGAACAAATTGGCTGGGAAGAGAACAGGCTTCTCCCTGGG
 TCCACTGTGCAGTCTCACACCAAGGGCATCTGGATGTGGTGTGTGCCTCACCCCAAGAAGGCAGGGCAAA
 CCCTAGTTCTGCTTGACACCGAGGGCCTTGAAGATGTTGAGAAGGGAGACAACCAGAACGACTGCTGGAT
 CTTTGCCTTGGCAGTCTCCTCAGCAGCACCTTCGTCTACAACAGCATGGGAACCATCAACCAGCAGGCC
 ATGGACCAGCTGCATTATGTGACAGAGCTGACTGATCTTATCAAGTCAAAGTCATCACCTGATCAGAGTG
 GGATAGACGACTCTGCTAACTTTGTGGCTTCTTCCAACCTTTGTGGGCTCTGAGAGATTTCTCCCT
 GGAGTTGGAAGTCAATGGAAAATTGTCACTCCTGATGAGTACCTGGAGCATTGCTGACCTGAAGAAA
 GGAGCTGATAAGAAAATAAAGCTTAAATGAGCCTCGACTGTGCATCAGGAAATCTTTCCGAAGAGGA
 AGTGTTCATCTTTGACAGACCTGCTCTGAGGAAGCAACTCTGCAAACTGGAGACTCTGGGGGAGGAGGA
 GCTGTGTAGTGAGTTTGTAGAACAAGTTGCAGAATTCACCTCGTATATCTTCAGTTACTCTGCTGTCAAA
 ACTCTGTCTGGTGGCATCATAGTCAATGGGCCACGTCTAAAGAGCCTGGTGCAGACCTATGTTGGTGCCA
 TCAGCAGTGGGTCTCTCCCTGCATGGAGAGTGCAGTCTGACTTTGGCCAGATAGAGAACTCAGCTGC
 AGTACAAAAGGCCATCACCCACTATGAAGAACAGATGAATCAGAAAATCCAGATGCCACAGAAACCCTC
 CAGGAGCTGTAGACCTGCACAGGCTGATTGAGAGGGAGGCCATTGAGATCTTCCCTAAAGAATCTTTCA
 AGGATGTAGACCAGAAGTCCAGACAGAATTAGGGAACCTGCTGATATCAAAGCGAGATGCCTTTATTAA
 GAAGAACTCGGATGTATCATCAGCTCATTGTTCCAGATCTGATAGAGGATATTTTTGGACCTCGGAAGAA
 GAAGTAAAACAAGGGACATTTTCCAACCAGGAGTTACTTCTCTTCTCAGATGAGACAAGAGCTAG
 AGAAGAAGTATAACCAGGCTCCTGGGAAGGGGCTCGAGGCAGAAGCGGTGCTGAAAAAGTACTTTGAGTC
 CAAGGAAGACATTGTTGAAACACTTCTAAAGACGGATCAGTCACTCACGGAGGCAGCAAAGGAGATTGAA
 GTGGAACGGATTAAGGCTGAACTGCTGAAGCTGCAAACAGAGAGTTAGCAGAGAAGCAGGAGAAGTTTG
 AGCTGATGATGCAGCAGAAGGAAGAGAGTTACCAGGAGCAGTGAGACAGCTGACTGAGAAGATGAAGGA
 GGAACAGAAAAAGTTAATAGAAGAACAGGACAACATCATAGCTCTTAACTTCGGGAACAGGAAAAATTT
 CTCAGGGAAGGATACGAGAACGAGAGCAAGAACTTCTCGAGAGATTGAGAACATGAAGAGACGACAAT
 CACCTGGGAAATGCACCATACT

ACGCGTACGCGGCCGCTCGAGCAGAAACTCATCTCAGAAGAGGATCTGGCAGCAAATGATATCCTGGATT
 ACAAGGATGACGACGATAAGGTTTAA

Protein Sequence:

>RR214194 representing NM_133624
 Red=Cloning site Green=Tags(s)

MDMASEIHMLQPMCLIENTEAHLVINQEALRILSAINQPVVVVAIVGLYRTGKSYLMNKLKAGKRTGFSLG
 STVQSHTKGIWMWCVPHPKKAGQTLVLLDTEGLEDEKGDNDQWIFALAVLLSSTFVYNSMGTINQQA
 MDQLHYVTELTDLIKSKSSPDQSGIDDSANFVGFPTFWALRDFSLLEEVNGKLVTPDEYLEHSLTLKK
 GADKKTFSFNEPRLCIRKFFPKRKCIFDRPALRKQLCKLETLGEEELCSEFVEQVAEFTSYIFSYSVAVK
 TLSGGIIVNGPRLKSLVQTYVGAISSGSLPCMESAVLTLAQIENSAAVQKAIHYEEMNQKIQMPTETL
 QELLDLHRLIEREAIEIFLKNSFKDQKQFQTELGNNLISKRDAFIKNSDVSSAHCSDLIEDIFGPLEE
 EVKQGTFSKPGGYFLFLQMRQELEKKYNQAPGKLEAEAVLKKYFESKEDIVETLLKTDQSLTEAAKEIE
 VERIKAETAEEANRELAEKQEFELMMQKQESYQEHVRQLTEKMKEEQKLEIEQDNIIALKLREQEF
 LREGYENESKLLREIENMKRRQSPGKCTIL

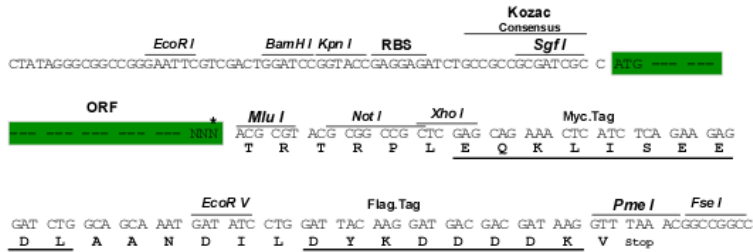
TRTRPLEQKLISEEDLAANDILDYKDDDDKV

Restriction Sites:

SgfI-MluI

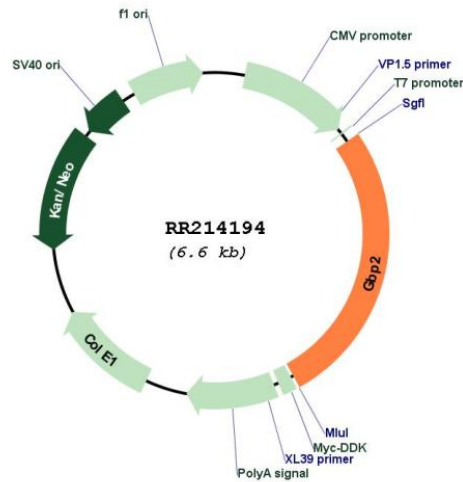
Cloning Scheme:

Cloning sites used for ORF Shutting:



* The last codon before the Stop codon of the ORF

Plasmid Map:



ACCN: NM_133624

ORF Size: 1773 bp

OTI Disclaimer:	The molecular sequence of this clone aligns with the gene accession number as a point of reference only. However, individual transcript sequences of the same gene can differ through naturally occurring variations (e.g. polymorphisms), each with its own valid existence. This clone is substantially in agreement with the reference, but a complete review of all prevailing variants is recommended prior to use. More info
OTI Annotation:	This clone was engineered to express the complete ORF with an expression tag. Expression varies depending on the nature of the gene.
Components:	The ORF clone is ion-exchange column purified and shipped in a 2D barcoded Matrix tube containing 10ug of transfection-ready, dried plasmid DNA (reconstitute with 100 ul of water).
Reconstitution Method:	<ol style="list-style-type: none"> 1. Centrifuge at 5,000xg for 5min. 2. Carefully open the tube and add 100ul of sterile water to dissolve the DNA. 3. Close the tube and incubate for 10 minutes at room temperature. 4. Briefly vortex the tube and then do a quick spin (less than 5000xg) to concentrate the liquid at the bottom. 5. Store the suspended plasmid at -20°C. The DNA is stable for at least one year from date of shipping when stored at -20°C.
RefSeq:	NM_133624.2 , NP_598308.1
RefSeq Size:	2395 bp
RefSeq ORF:	1776 bp
Locus ID:	171164
UniProt ID:	Q63663
Cytogenetics:	2q44
MW:	67.4 kDa
Gene Summary:	in vitro substrate for isoprenylation by geranylgeranylpyrophosphate [RGD, Feb 2006]