

Product datasheet for **RR214181**

Hip1 (NM_001100475) Rat Tagged ORF Clone

Product data:

Product Type: Expression Plasmids
Product Name: Hip1 (NM_001100475) Rat Tagged ORF Clone
Tag: Myc-DDK
Symbol: Hip1
Vector: pCMV6-Entry (PS100001)
E. coli Selection: Kanamycin (25 ug/mL)
Cell Selection: Neomycin
ORF Nucleotide Sequence: >RR214181 representing NM_001100475
Red=Cloning site Blue=ORF Green=Tags(s)

TTTTGTAATACGACTCACTATAGGGCGGCCGGAATTCGTCGACTGGATCCGGTACCGAGGAGATCTGCC
 GCCCGATCGCC

ATGGACCGGATGGCCAGCTCCATGAAGCAGGTACCCAACCCGCTGCCAAAGTGTGAGCCGGCGCGGGG
 TTGGTGTGGGATGGAGGCTCGGAGCGCGAGAGCTTCGAGCGGACTCAGACGGTCAGCGTCAATAAGGC
 CATTAAATACGCAGGAAGTGGCCGTGAAGGAAAAACATGCCAGGACGTGTATTCTGGGCACCCACCATGAG
 AAAGGGGCGCAGACCTTCTGGTCTGTGGTCAACCGACTGCCTCTCTCCAGCAACGCCATGCTGTGCTGGA
 AGTTCTGCCACGTGTTCCACAACTCCTTCGAGACGGACATCCGAACGTGCTGAAAGACTCTCTCAGATA
 CAAAAATGAGTTAAGCGACATGAGCAGGATGTGGGGCCACCTGAGTGAGGGGTATGGACAGCTCTGCAGC
 ATCTACCTCAAAGTCTGAGAACAAGGATGGAGTACCACACCAAAAAATCCCAGGTTCCCAGGTAACCTCC
 AGATGAGCGACCGCAGCTGGATGAAGCTGGGAAAGTGTGTTAAACAATTTTTCCAGCTCACAGTGGA
 GATGTTTGATTACCTGGAGTGCGAACTGAACCTCTTCAAAGTGTGTTCAACTCCTTGGACATGTCCCGC
 TCAGTGCCGTGACCACAGCTGGCCAGTGCCGCTCGCCCGCTCATCCAGGTCATCCTGGACTGCAGTC
 ACCTCTATGACTACACTGTCAAGCTGCTCTTCAAGCTCCACTCCTGTCTTCCAGCTGACACCCTGCAGGG
 CCACCGAGACCGTTTATGGAGCAGTTCACAAAGTTGAAAGATCTGTTTCAGCGCTCCAGCAACCTTCAG
 TACTTCAAGCGGCTCATTAGATCCCCAGTTGCCTGAGAATCCACCAACTTCTACGAGCCTCGGCC
 TGTCCGAGCACATCAGTCTGTGGTGGTATCCCGGCTGAGGTGTGCTTCCAGACAGTGAGCCCGTCT
 GGAGAAGGATGACCTCATGGACATGGATGCCTCCCAGCAGAGTTTGTGTTGACAACAAGTTTATGACATC
 TTCGGCAGCTCGTTGAGCAGTGACCCCTCAATTTCAACAATCAAAATGGCGTGAACAAGGATGAGAAGG
 ACCACTTGATTGAACGCCTCTACAGAGAGATCAGTGGACTGACAGGACAGCTGGACAACGTGAAGATTGA
 GAGCCAGCGGGCCATGCTGCAGCTGAAGGTCGCGTGAAGTGAAGTGAAGTGAAGTGAAGTGAAGTGAAG
 CACCTGGGACGGCAGGCTACGGATGACTGCGGATTCCTGCGCAGGAGCTGGATGAAGTGAAGTGAAG
 GAGAGGACACTGAGAAGGCGCAGCAGCAGCTGACTGAGATAGAAAAAAGGCCAGGCCAATGAACAGCG
 GTATAGCAAGTTAAAAGAGAAGTACAGTGAAGTGGTGCAGAACCATGCTGATCTGCTGCGGAAGAATGCA
 GAGGTGACCAAGCAGGTGTCTGTGGCCCGCAAGCCAGGTGGATTTGAAAAGAGAGAAAAAAGAAGTAG
 CGGATTCCTTTGCACGTAAGAGCAACAGGATGTTCTAGAGACCCTGAAGCAGCAACTGGCCACCAG
 CAGGCAAGAGCTGCAGGTCTCCATGGCAACCTGGAACTCTGCCAGTCTGAGGCGAAATGGCTAACG



[View online »](#)

CAGATCGCGGAGCTGGAGAAGGAACAAGGCAGTTTGGCGACAGCCGCGCTCAAAGAGAGGAAGAGTTCT
 CAGCCCTCCGAGACCAACTGAAAGCACCCAGCTCAAAGTGGCTGGTGGCCAGGATTCCATGTGTGACGA
 GATAAAGGACCAGAGGAGAATCCTCTTGGCAGGGGCCAGGAAGGCTGCGGAGCTCGAGATACAGGAGGCC
 CTGGGCCAGCTTGAAGAGCCTGCCCTCCTCATCAGCTGTGCAGGAGCCACAGATCATCTTCTCTCAAAG
 TCAACTCCGTTTCCAGCTGCCTCGAGCAACTGAAAAGAGCCGCAGCCAGTATCTGGCCTGCCAGAAGA
 GATCAGTGAGCTTCTGCACTCAATAACCCTGCTGGCCACTTGACCAGTGACACCATCATTACAGGGGACT
 GCCACCAGCCTCCGGGCCACCAGAGTCAGCCGACTCTCTGACGAGGCGCTGAGCAGTATGGCAGAG
 AAACCTGGCCTATCTGTCTCCCTAGAGGAAGAGGGGCCATGGAAAAAGCTGACACCACAGCCATAGC
 GAACTGCCTCGGCAAGATCAAGACCATTGGCGAGGAAGTCTGCCAGGGGCTTGACATCAAGCAGGAA
 GAGCTGGGTGACCTGGTGGACAAGGAGATGGCAGCCACTTCAAGCTGCCATTGAAGCTGCCACCACCCGGA
 TAGAGGAAATTCTCAGTAAGTCCCGAGCAGGAGACACGGGAGTCAAGTTGGAGGTGAACGAGAGGATCCT
 TGGCTCCTGTACCAGCCTGATGCAAGCTATCAAGGTGCTGTTGTGGCCTCAAGGACCTCCAGAAGGAG
 ATAGTGGAAAGCGGCAGGGTACCGCATCCCCTAAAGAATTTACGCCAAGAACTCTCGGTGGACAGAAG
 GGCTCATATCTGCCTCAAAGCTGTTGGTTGGGAGCTACCATCATGGTGGATGCTGCTGACCTTGTGGT
 CCAAGGCAAAGGGAAGTTCGAGGAGCTGATGGTGTGCTCGCATGAGATTGCCGCTAGCACAGCCAGCTT
 GTGGCTGCATCAAAGGTGAAAGCGAACAAGGGCAGCCTCAATCTGACCCAGCTGCAGCAGGCTCTCGGG
 GAGTGAACCAGGCCACGGCCGCTGTGGTGGCCTCAACCATTTCCGGCAAATCTCAAATTGAGGAAACAGA
 CAGTATGGACTTCTAAGCATGACACTGACCCAGATCAAGCGCCAGGAAATGGATTCCCAGGTTAGGGTG
 CTGGAGCTAGAAAACGACCTGCAGAAGGAGCGCCAGAACTAGGAGAGCTTCGGAAAAACACTACGAGC
 TGGCTGGTGTGCTGAGGGCTGGGAAGAAGGGACAGAAGCATCACCTTCTGCTGTTCAAGAAGCGGTGCC
 GGACAAAGAG

ACGCGTACGCGGCCGCTCGAGCAGAACTCATCTCAGAAGAGGATCTGGCAGCAAATGATATCCTGGATT
 ACAAGGATGACGACGATAAGGTTTAA

Protein Sequence:

>RR214181 representing NM_001100475
 Red=Cloning site Green=Tags(s)

MDRMASMKQVNPPLPKVLSRRVGVGAGMEAAERESFERTQTVSVNKAINTQEAVVKEKHARTCILGTHHE
 KGAQTFWSVNNRPLSSNAMLCWKFCHVFHKLRLDGHNPVLDKSLRYKNELSDMSRMWGHLSSEGQLCS
 IYLKLLRTRMEYHTKNPRFPGNLQMSDRQLDEAGESDVNNFFQLTVEMFDYLECELNLFQTVFNSLDMSR
 SVSVTTAGQCRLAPLIQVILDCSHLYDYTVKLLFKLHSLPADTLQGHRDRFMEQFTKLKDLFQRSNLQ
 YFKRLIQIPQLPENPPNFLRASALSEHISPVVVIPAIEVSSPDSEPVLEKDDLMDMDASQSLFDNKFDDI
 FGSSLSSDPFNFNNQNGVNKDEKDHLEIRLYREISGLTGQLDNVKIESQRAMLQLKGRVSELEAELAEQQ
 HLGQRATDDCEFLRTELDELKRQREDTEKAQRSLTEIEKKAQANEQRYSKLKEKYSSELVQNHADLLRKN
 EVTKQVSVARQAQVDLEREKELADSFARTQEQQDVLETLKHELATSRQELQVLHGNLETSAQSEAKWLT
 QIAELEKEQGLATAAAQREEF SALRDQLESTQLKLAGAQDSMCQIQIKDQRRILLAGARKAAELEIQEA
 LGQLEEPALLISCAGADHLLSKVNSVSSCLEQLEKRSQYLACPEEISELLHSITLLGHLTSDTI IQGT
 ATSLRAPPEADSLTEACRQYGRETLAYLSSLEEEGAMEKADTTAIANCLGKIKTIGEELLPRGLDIKQE
 ELGDLVDKEMAATSAAIEAATTRIEEILSKSRAGDTGVKLEVNERILGSCTSLMQAIVKLVVASKDLQKE
 IVESGRGTASPKEFYAKNSRWTEGLISASKAVGWGATIMVDAADLVVQGGKFEELMVCSEHIAASTAQL
 VAASKVKANKGSLNLTLQQAASRVNQATAAVVASTISGKSQIEETDSMDFSSMTLTQIKRQEMDSQVRV
 LELENDLQKERQKLGELRKKHYELAGVAEGWEEGTEASPSAVQEA VPDKE

TRTRPLEQKLI SEEDLAANDILDYKDDDDKV

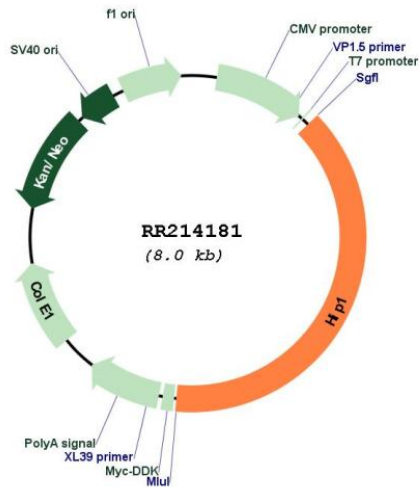
Restriction Sites:

Sgfl-Mlul

Cloning Scheme:



Plasmid Map:



ACCN: NM_001100475

ORF Size: 3090 bp

OTI Disclaimer:	The molecular sequence of this clone aligns with the gene accession number as a point of reference only. However, individual transcript sequences of the same gene can differ through naturally occurring variations (e.g. polymorphisms), each with its own valid existence. This clone is substantially in agreement with the reference, but a complete review of all prevailing variants is recommended prior to use. More info
OTI Annotation:	This clone was engineered to express the complete ORF with an expression tag. Expression varies depending on the nature of the gene.
Components:	The ORF clone is ion-exchange column purified and shipped in a 2D barcoded Matrix tube containing 10ug of transfection-ready, dried plasmid DNA (reconstitute with 100 ul of water).
Reconstitution Method:	<ol style="list-style-type: none">1. Centrifuge at 5,000xg for 5min.2. Carefully open the tube and add 100ul of sterile water to dissolve the DNA.3. Close the tube and incubate for 10 minutes at room temperature.4. Briefly vortex the tube and then do a quick spin (less than 5000xg) to concentrate the liquid at the bottom.5. Store the suspended plasmid at -20°C. The DNA is stable for at least one year from date of shipping when stored at -20°C.
RefSeq:	NM_001100475.1 , NP_001093945.1
RefSeq Size:	7376 bp
RefSeq ORF:	3093 bp
Locus ID:	192154
Cytogenetics:	12q12
MW:	115 kDa
Gene Summary:	human homolog binds clathrin and the clathrin adaptor AP2; may play a role in clathrin-mediated endocytosis [RGD, Feb 2006]