

Product datasheet for **RR214167**

Col5a3 (NM_021760) Rat Tagged ORF Clone

Product data:

Product Type: Expression Plasmids
Product Name: Col5a3 (NM_021760) Rat Tagged ORF Clone
Tag: Myc-DDK
Symbol: Col5a3
Vector: pCMV6-Entry (PS100001)
E. coli Selection: Kanamycin (25 ug/mL)
Cell Selection: Neomycin
ORF Nucleotide Sequence: >RR214167 representing NM_021760
Red=Cloning site Blue=ORF Green=Tags(s)

TTTTGTAATACGACTCACTATAGGGCGGCCGGAATTCGTCGACTGGATCCGGTACCGAGGAGATCTGCC
GCC**CGATCGCC**

ATGAGAAGCTGCCGGAGACTGGACCAGCTTCAGGCCGGCCTCTGCCTGCTCCTGGCCTCCCTACAACCTCG
TGTCTGGACGCTGGCTGCAGAACCTGTGGATGTATTGAAACCTTGGGTGTGCATAGGGACAAGGCTGG
GGTGACCAAAGGGCCTGGCTTCTGCCCCAGAGGATTCCACAGGGTGACCGAGCATTTCAGGGTGGGCAAG
TCCAGCCTTCTCAGCGTCCCCACATGGCAGCTCTTCCAGATGGACATTTCTGAGAACTTTTCTGTGC
TGCTCACTCTGCGGGCCAGCCAGCCAATCAATCTGTCCTTCTGTCTATATGACGAGAATGGTGTCCG
GCAGATGGGGCTGGCACTGGGGCCAGCTCTGGGTCTCCTTGGTACTCTTTCAGGTCTCTTCCCAAGCAG
ATCAACCTTATGGATGGCAGGTGGCACCAGGGTGGCGGTGAGCATCAGCGGTGACAAGGTGACCCTGGTGG
TTGACTGTGAACCTCAGCCCCCATGTTTGGTCAAGGGCCTCGGGTTATAAGTACAGCTGGACTCACGGT
GATGGGAACCCAGGAGCTCGGGGAGGAGCTTTTGGGGAGACATCCAGGAGCTGCTGTTAATTCAGAC
CCTCAGGCTGCTCTCAGGCCTGTGAGCTCTACCTGCCTGACTGTGAGACCCCGATTCCACAACCACAG
GGTCACTAAAGAAGAACCAGAAACACCTGCCCTCGTCGACGAAAGGGCAAAGGAAAGAAAAAGATCG
GGGTCGCAAGGGCAAGGGAAGAAAGAAAAACAAGACCTCAAGACTGAGTCCAACCCAGGTGCCCTGAG
AACCAGACCTCCCTCCACACCCCTGAGACAGAGAAGCCATCGCCCATCTGCCTCCAACCTCCACACCTT
TGGCCATCACCACCCTGTACGATGGGAGGAAATGCCACAGTTTTGCAGGGGTTGGACTCCAGTACTGA
AACTGAGCAGATGACTCCAGAGATGGACGCTACTGAAGAGAGTGAAGGAGGTGGCCCGACCATGGGCCCC
GAGTTCGGGCAGCAGAACAGTCTTTACAGACTGAGTTCAGATCTTCTGTTGCTGGAGAAAAGGGAG
CGAAAGGAGAACCTGCGACTATAGAGCAGGGACAGCAGTTTGGGGACCTGCAGGAGCTCCAGGACCCCG
GGGAATATCTGGTCTTCAGGCCCTCCTGGGCCTCCGGGCTTCCCTGGGACCGTGGCCTACCGGGCCCT
GCTGGCCTCCAGGAATCCAGGCATTGATGGCGTCCGGGGCCTGCCAGGCACAGTGATCATGATGCCGT
TCCATTTTGAAGCGGCTCGATGAAAGGACCCCAAGTCTCCTTTCAACAGGCACAGGCCAGGCAGTACT
GCAACAGGCTCAGCTGTCCATGAAAGGGCCCCCTGGTCCAGTAGGGCTCACTGGGCGCCAGGCCCTGTG
GGCCTCCCTGGATATCCAGGTCTGAAAGGTGAATTGGGAGAAGCAGGGCCTCAGGGCCCCGAGGATTGC
AGGGCCCTCCTGGCCTCCTGGACGGGAAGGCAAGACAGGCCGAGCTGGAGCAGATGGGGCTCGGGGTCT
TCCGGGAGACACAGGACCTAAGGGTGACCGGGCTTTGATGGCCTGCCTGGACTGCCTGGTGAAGGGC



CAGAGGGGTGACTTTGGACCTGTAGGACAACCTGGTCCCCCAGGAGAAGATGGTATAAAGGGCCTGCAGG
 GACCTCCAGGCCCACTGGCCAGGCTGGAGAGCCGGTCCCCAGGTCTGATTGGCCCCAGAGGCCCCCC
 TGGTCTTTAGGACGCCCGGGTGTGACAGGGAGTGATGGCGCACCCGGGTGCCAAAGGCAACGTGGGTCT
 CCCGGAGAACCAGGCCCCCAAGGACAGCAAGGAAACCACGGTCCCAGGGAATCCCAGGCCCCAGGGG
 CCATTGGCACACCCGGGAGAAAGGTCTCTGGAAACCCGGAATCCAGGTGTCCAGGATCTGAGGG
 CCCCCGGGCCACCCAGGCATGAGGGTCCCACCGGAGAAAAGGGGGCTCAGGGCCACCAGGGTCAGCA
 GGCCCTCAGGGCTATCCTGGACCTCGTGGTGTGAAGGGTACCTCTGGTAACCGGGCCCTCAAGGAGAGA
 AAGGAGAAAGGGGAGAGGATGGTTTTCCAGGCTTCAAGGGTGATGAGGGACCAAAGGCGACCCGGGAAA
 CCCGGACTCCCAGGTCCCAGAGGAGAGGATGGCCAGAAAGGACAAAAGGGCCCTGAGGGACTGCCTGGT
 GATGAGGGCCCCCAGGAGCAGCAGGGGAGAAGGGCAAGCTTGGGGTGCCAGGTCTCCCAGTTATCCAG
 GACGCCCAGGACCTAAGGGATCTATTGGATTTCTGGGCCCTTGGACACTGGGGGAGAAAGGCAAGCG
 GGGCAAAGCAGGGCAGCCAGGGGAGGAAGGAGAACGTGGCACACCCGGGCACCAGAGGAGACAGAGGACAG
 CCAGGGGCCACAGGCCAGCTGGCCCTAAGGGAGATGTGGCCAGAACGGGTCTCTGGGGCCCCGGAG
 AAAAGGGTCTACCGGTCTGCAAGGTCCCCAGGATTCCTGGGCCAAAAGGCCCCCCAGGTCTCAGGG
 GAAAGATGGGATACCCGGACACCTGGACAAGAGGAGAATTGGGCTTCAAGGTGAGACAGGCCCCCT
 GGACCAGCTGGTGTCTTGGTCTCAGGAAAAGGTAGGGGATGTGGGTCTCTAGGCGAGAGAGGCCCCC
 CAGGGCCTCCTGGACCGCTGGTGAACAGGTCTGCCAGGCATAGAAGGCAGAGAAGGGGCCAAGGGTGA
 GCTAGGACCCCTGGGGTCCCTCGAAAGGAGGGGCCACCTGGGCCATGGGCTTCCCTGGCCACAAGGA
 GCCCCCGAGACCCAGGACCCATTGGTTGAAGGGTGACAAGGGTCCCCGGGCCCTTTGGGGCAAATG
 GCTCCCCAGGTGAGCGTGGTCTGTGGGCCCTCTGGAGGCAATGGGCTTCTGGCCAGAGTGGTGGGCA
 AGGCCCTATTGGTCTGTGGTGAAGGGTCCCCGGGAGAACGGGTGTGCCTGGTCTACTGGCAA
 GATGGTATTCCAGGGCCCCGGGACTTCAGGGGCCCTGGAGCTGCAGGGCCTTCTGGTGAAGGAGG
 ACAAGGGGAAGTAGGGATGCTGGACACAAGGGAAGCAAGGGGATAAAGGAGATGCGGGCCCACTGG
 ACCAACAGGAATAAGGGGTCCAGCGGGCCATCCAGGCCCCCGGGTGTGATGGTCTCAGGGTCGGCCG
 GGACCCCTGGCCTCTTTGGGCAGAAAGGTGATGATGGAGTCCGAGGCTTTGTAGGTGTAATTGGTCTC
 CAGGCCTGCAGGGGTGCCGGGCCCTCCTGGGAGAAAGGCGAGGTTGGAGACGTGGGATCCATGGGTCC
 CCACGGAGCTCCAGGCCCTCGGGTCCCCCTGGGCCAGTGGATCAGCGGGTTCCCAGGGCTGCCTGGA
 GGAGTAGGGCAGCTGGCGCTGTGGCGAGAAGGGTGAGCCAGGGAATGCTGGAGACGTGGACCCCAAG
 GAGTCCAGGCATCCCTGGGCCAAAGGTGAAATTGGTAAAAGGGGGATTGGGTCCATCAGGGGTGC
 TGGTCTCCAGGCAAAAAGGACCTCCTGGAGAGGACGGAGCTAAGGGGAACATGGTCCCACAGGACTC
 CCTGGAGATCTAGGACCCCAAGGAGACCTGGAGTTCGGGTACGGATGGCATCCAGGGGAGAAGGGGA
 ATGCTGGTATATTGGGGACCGGGGCCACCTGGAGCTTCAAGGGAACCTGGTGCCTGGGCTCCCTGG
 CAAGAGGGGTTCCCTGGCCGATGGGTCCAGAAGGAAAAGAGGGAGAGAAGGGCCCAAGGGAGATGCT
 GGTCCCAGTGGCCCCCAGGAGAACAGGCCCAATGGGGCTCGGGGGCCCCCTGGACGGGTTGGGCTG
 ATGGTCTTCCAGGGATCCCTGGTCTGTGGGTGAACAGGTCTCCTGGGACCTCCTGGGTAATCGGCC
 TCCAGGGCCCCTGGGCCACCTGGCCTCCCTGGCTGAAGGGAGACGCTGGCCTCAAGGGGGAAAAGGGC
 CACATTGGGCTAATCGGCCTCATTGGTCCCCAGGGGAGGCTGGGAAAAAGGCGATCAGGGGTTGCCAG
 GTGTGCAGGGCCCTCAGGCCTCAGGGAGACCTGGTCTTCTGGTCTGTTGGCTCCTTAGGTACCC
 TGGGCCCCAGGTGTGGTGGGCCCTCTGGGACAGAAGGGTTCAAGGGGTCCCCGGGATCCTTTGACCT
 CGTGGAGACCCTGGACCAGCAGGTCTCCTGGTCCCCCGGGTCCCCTGCTGAGGTGCACGGCCTGCGTA
 GGCGCCGCTCTGTGTTGGACACCCAGAAGGTGGCCTGGAGGAAGTATGGCCTCACTCAATCACTGAG
 CTTGGAGCTGGAGCAGTTGCAGCAGCCCCAGGCACAGCCGAGAGCCAGGCCTCATATGCCACGAGCTT
 CATCGAAACCACCCACACCTGCCGACGGAGAGTACTGGATTGACCCCAATCAGGGCTGTGCACGGGACG
 CCTTCAAGGTCTTCTGCAACTTCACTGCCGAGGTTGAGACCTGTCTTACCAGACAAGAAGTTGAGAC
 GGTGAAACTGGCCTCCTGGTCCCAGAAAAGCCTGGAGGTTGGTACAGCACCTCCGCGAGGGAAGAAG
 TTCTCTATGTGGATGCTGACGGCTCCCCGGTGAATGTGGTCCAGTTGACCTTCTGAAGTTGTTGAGCG
 CTGCAGCCATCAGAGGTTCACTTACACCTGCCAGAACTCCGACGATGGCTGGACGAAGCTTCAAGTGA
 CCACAGGCACTATCCGCTTCCAAGGGACCAACTGGGAAGAGTTGTCTTCAACCAGACAACAGCAGCC
 ACCATCAAGGTCCCCATGATGGCTGCCGGTCCGGAAGGGACAGGCCGAAGACCTCTTTGAATTAGCT
 CTTCTGTGGGCTTTCTGCCTCTGTGGGATGTGGCCGCCGTTGACTTTGGCCAGACGAACCAGAAGTTGG
 GTTTGAACCTGGCTCCGCTGCTTTAGCAGC

ACGCGTACGCGGCCGCTCGAGCAGAACTCATCTCAGAAGAGGATCTGGCAGCAAATGATATCCTGGATT
ACAAGGATGACGACGATAAGGTTTAA

Protein Sequence:

>RR214167 representing NM_021760
Red=Cloning site Green=Tags(s)

MRSCRRLDQLQAGLCLLLASLQLVSWTLAEPVDVLETLGVHRDKAGVTKGPGFCPQRIPQGDRAFRVVK
SLLSVPTWQLFPDGHFENFVLLTLRAQPANQSVLLSIYDENGVRQMGLALGPALGLLGDSEFRSLPKQ
INLMDGRWHRVAVSISGDKVTLVVDCEPQPMFQGQPRVISTAGLTVMGTQELGEESEFGDIQELLLIPD
PQAALQACELYLPDCETPDSTTTGVTKEEPETPAPRRRKGKGGKDRGRKGRKKNKTSRLSPTPGAPE
NQTSLHTPETEKPSPLPPTPTPLAITTTVTMGGNATVLQGLDSSSTETEQTPEMDATEESEGGGPTMGP
EFRAAEQSLQTEFQIFPGAGEKAKGEPATIEQQQFEGPAGAPGPRGISGSPGPPGPPGFGDRGLPGP
AGLPGIPGIDGVRGLPGTVIMPPFHFASGSMKGGPPVFSQQAQAQAVLQQAQLSMKGGPPVGLTGRPGPV
GLPGYPLKGLGEAGPQGPRLQGPPGPPGREGKTGRAGADGARGLPDGTGPKGDRGFDGLPGLPGEKG
QRGDFGYPVQPGPPGEDGIKGLQPPGPTGQAGEPGPRGLIGPRGPPGLGRPGVTGSDGAPGAKGNVGP
PGEPPGPPQQGNHGSQGIPIGPQPIGTGPEKGGPNPPIGPVPGSEGGPHGHEGPTGEKGAQGGP
GSA
GPQYGPGRGKGTSGNRGLQGEKGERGEDGPFKGDGPKGDRGNPGLPGRGEDGPEQKGPGLPG
DEGPPGAAGEKGLGVPGLPGYGRPGKSGIFGPGPLGPLEKGRKAGQPGEEGERGTPGTRGDRGQ
PGATGQPGKGDVQNGSPGAPGEKGLPGLQPPGFPKGGPPGQKDGIPGHPGQRGELGFQGGTGP
GPAGVLPQKGVGDVGLGERGPPGPPGPEPLPIEGREGAKGELGGLSLGKEGPPGMPGFPQ
APGDPGPIGLKGDKGGPPLGANGSPGERGVPVSGGIGLPGQSGGQPIGPAGEKSPGERGVPGTGK
DGIPGPPGLQPPGAAGPSGEEGDKGEVMPGHKGSKGDGDAGPPGPTGIRGPAGHPGPPGADGAQRR
GPPGLFGQKGGDVRGFGVIGVPPGLQGLPGGPEKGEVGDVSGMGPAGPGRGPPGSPGAGSPLPG
GVGQPGAVGEKGEPEGNAGDAGPPGVPPIGPKEIGEKDSSGSAAGPPGKGGPPGEDGAKNMGPTGL
PGDLGPPGDPGVPDGTGIPGEKGNAGDIGGPPGASGEPGARGLPKRGSPGRMGPEGKEGKAGKDA
GPDGPPGRTGPIGARGPPGRVDPGLPIGPVGEPLGPPGLIGPPGPLGPPGLPGLKGDAGLKGEKG
HIGLIGLIGPPGEAGEKGDQGLPGVQPPGLQGDPLPGVPSLGHPPGPPVGLGQKSGKSPGSLGP
RGDPGAPGPPGPPGSPAEVHGLRRRSVLDTPEGGLEEVMSLNSLSLELEQLRPPGTAE SPLICHEL
HRNHPHLPDGEYWDPNQGCARDAFKVFCNFTAGGETCLYDKKFETVKLASWSREKPGGWYSTRFRGKK
FSYVDADGSPVNVVQLTFLKLLSAAHQRFYTCQNSAAWLDEASGDHRHSIRFQGTNWHEELSFNQTTAA
TIKVPDHGCRVRKGAQKTLFEFSSVGFLLPLWDVAAVDFGQTNQKFGFELGVCVCFSS

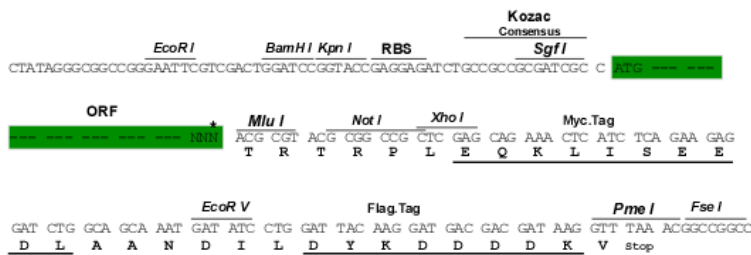
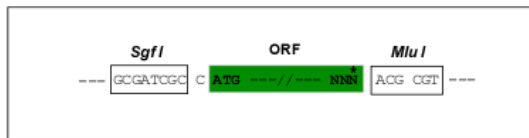
TRTRPLEQKLISEEDLAANDILDYKDDDDKV

Restriction Sites:

SgfI-MluI

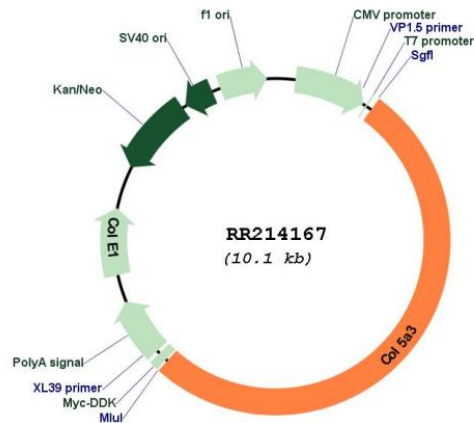
Cloning Scheme:

Cloning sites used for ORF Shuttling:



* The last codon before the Stop codon of the ORF

Plasmid Map:



ACCN: NM_021760

ORF Size: 5211 bp

OTI Disclaimer: The molecular sequence of this clone aligns with the gene accession number as a point of reference only. However, individual transcript sequences of the same gene can differ through naturally occurring variations (e.g. polymorphisms), each with its own valid existence. This clone is substantially in agreement with the reference, but a complete review of all prevailing variants is recommended prior to use. [More info](#)

OTI Annotation: This clone was engineered to express the complete ORF with an expression tag. Expression varies depending on the nature of the gene.

Components:	The ORF clone is ion-exchange column purified and shipped in a 2D barcoded Matrix tube containing 10ug of transfection-ready, dried plasmid DNA (reconstitute with 100 ul of water).
Reconstitution Method:	<ol style="list-style-type: none">1. Centrifuge at 5,000xg for 5min.2. Carefully open the tube and add 100ul of sterile water to dissolve the DNA.3. Close the tube and incubate for 10 minutes at room temperature.4. Briefly vortex the tube and then do a quick spin (less than 5000xg) to concentrate the liquid at the bottom.5. Store the suspended plasmid at -20°C. The DNA is stable for at least one year from date of shipping when stored at -20°C.
RefSeq:	<u>NM_021760.1</u> , <u>NP_068528.1</u>
RefSeq Size:	6076 bp
RefSeq ORF:	5214 bp
Locus ID:	60379
Cytogenetics:	8q13
MW:	171.6 kDa
Gene Summary:	alpha chain of type V collagen [RGD, Feb 2006]