

Product datasheet for **RR214161**

Cdipt (NM_138899) Rat Tagged ORF Clone

Product data:

| | |
|--------------------------|---|
| Product Type: | Expression Plasmids |
| Product Name: | Cdipt (NM_138899) Rat Tagged ORF Clone |
| Tag: | Myc-DDK |
| Symbol: | Cdipt |
| Synonyms: | Pis; Pis1 |
| Vector: | pCMV6-Entry (PS100001) |
| E. coli Selection: | Kanamycin (25 ug/mL) |
| Cell Selection: | Neomycin |
| ORF Nucleotide Sequence: | >RR214161 representing NM_138899 Red=Cloning site Blue=ORF Green=Tags(s) |

TTTTGTAATACGACTCACTATAGGGCGGCCGGAATTCGTCGACTGGATCCGGTACCGAGGAGATCTGCC
GCC**CGATCGCC**

ATGCCAGAGGAAAATATCTTCCTGTTTCGTGCCTAATCTTATTGGTTATGCCCGGATTGTTTTGCCATCA
TTTCCTTCTACTTTATGCCCTGCTGCCCTTACGGCCTCCTCCTCTATCTACTCAGCGGACTTCTAGA
CGCTTTTCGATGGACACGCAGCTCGAGCCCTTAATCAAGGAACCCGATTTGGGGCCATGCTCGACATGCTG
ACGGACCGTTGCGCCACCATGTGTCTTTGGTCAACCTGGCCCTGCTCTACCCTCGGGCCACTCTTCTGT
TCCAGCTCAGCATGAGCCTGGACGTGGCCAGTCACTGGCTGCATCTGCACAGTTCTGTGGTGCGAGGCAG
TGAGAGCCACAAGATGATTGACCTGTCTGGAAACCCTGTGCTTGAATCTACTATACTTCCAGGCCTGCT
CTGTTACCCCTGTGTGCTGGAAATGAACTTCTACTGCCTCCTGTACCTGTTCAATTTCTCCGAGGGAC
CACTAGTCGGCTCTGTGGGGCTTTTCCGAATGGCCTCTGGATCACAGCTCCCATTGCCCTGCTCAAGTC
CATCATTAGTGCATCCACCTCGTCACGGCTGCAAGGAACATGGCTGCCCTCGATGCAGCAGACCCGCC
AAGAAGAAA

ACGCGTACGCGGCCGCTCGAGCAGAAACTCATCTCAGAAGAGGATCTGGCAGCAAATGATATCCTGGATT
ACAAGGATGACGACGATAAGGTTTAA



[View online »](#)

Protein Sequence: >RR214161 representing NM_138899
 Red=Cloning site Green=Tags(s)

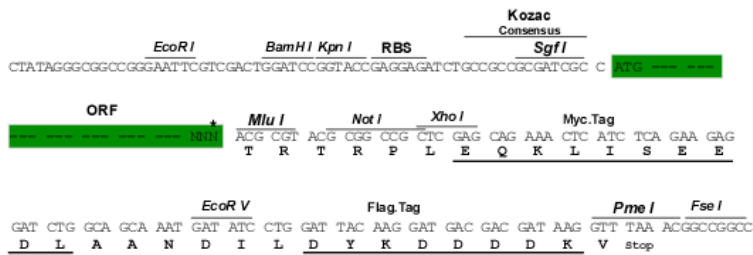
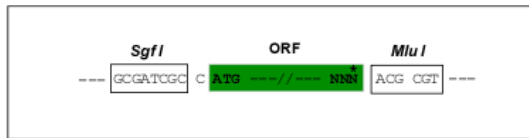
MPEENIFLVPNLIIGYARIVFAIISFYFMPCCPFTASSFYLLSGLLDAFDGHAARALNQGTRFGAMLDM
 L TDRCATMCLLVNLLALYPRATLLFQLSMLSDVASHWLHLHSSVVRGSESHKMIDL SGNPVLRIYYTSRPA
 LFTLCAGNELFYCLLYLFNFSEGPLVGSVGLFRMGLWITAPIALLKSII SVIHLVTAARNMAALDAADRA
 KKK

TRTRPLEQKLISEEDLAANDILDYKDDDDKV

Restriction Sites: Sgfl-MluI

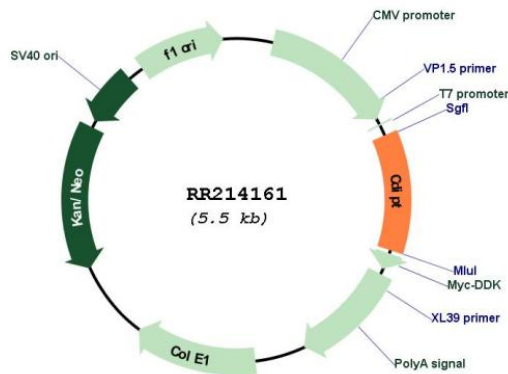
Cloning Scheme:

Cloning sites used for ORF Shuttling:



* The last codon before the Stop codon of the ORF

Plasmid Map:



ACCN: NM_138899

ORF Size: 639 bp

| | |
|-------------------------------|---|
| OTI Disclaimer: | The molecular sequence of this clone aligns with the gene accession number as a point of reference only. However, individual transcript sequences of the same gene can differ through naturally occurring variations (e.g. polymorphisms), each with its own valid existence. This clone is substantially in agreement with the reference, but a complete review of all prevailing variants is recommended prior to use. More info |
| OTI Annotation: | This clone was engineered to express the complete ORF with an expression tag. Expression varies depending on the nature of the gene. |
| Components: | The ORF clone is ion-exchange column purified and shipped in a 2D barcoded Matrix tube containing 10ug of transfection-ready, dried plasmid DNA (reconstitute with 100 ul of water). |
| Reconstitution Method: | <ol style="list-style-type: none">1. Centrifuge at 5,000xg for 5min.2. Carefully open the tube and add 100ul of sterile water to dissolve the DNA.3. Close the tube and incubate for 10 minutes at room temperature.4. Briefly vortex the tube and then do a quick spin (less than 5000xg) to concentrate the liquid at the bottom.5. Store the suspended plasmid at -20°C. The DNA is stable for at least one year from date of shipping when stored at -20°C. |
| RefSeq: | NM_138899.2 , NP_620254.1 |
| RefSeq Size: | 1890 bp |
| RefSeq ORF: | 642 bp |
| Locus ID: | 192260 |
| UniProt ID: | P70500 |
| Cytogenetics: | 1q37 |
| MW: | 23.6 kDa |
| Gene Summary: | catalyzes the formation of phosphatidylinositol and CMP from CDP-diacylglycerol and myo-inositol [RGD, Feb 2006] |