

Product datasheet for **RR214102**

Npy5r (NM_012869) Rat Tagged ORF Clone

Product data:

Product Type:	Expression Plasmids
Product Name:	Npy5r (NM_012869) Rat Tagged ORF Clone
Tag:	Myc-DDK
Symbol:	Npy5r
Synonyms:	NPYR5
Vector:	pCMV6-Entry (PS100001)
E. coli Selection:	Kanamycin (25 ug/mL)
Cell Selection:	Neomycin



[View online »](#)

ORF Nucleotide Sequence:

>RR214102 representing NM_012869
 Red=Cloning site Blue=ORF Green=Tags(s)

TTTTGTAATACGACTCACTATAGGGCGGCCGGAATTCGTCGACTGGATCCGGTACCGAGGAGATCTGCC
 GCC**CGATCGCC**

ATGGAGTTTAAGCTT**GAGGAGC**ATTTTAA**CAAGAC**ATTTGTCACAGAGAACAATACAGCTGCTGCTCGGA
 ATGCAGCCTTCCCTGCCTGGGAGGACTACAGAGGCAGCGTAGACGATTTACAATACTTTCTGATTGGGCT
 CTATACATTTCGTAAGTCTTCTTGCTTTATGGCAATCTACTTATTTAATGGCTGTTATGAAAAAGCGC
 AATCAGAAGACTACAGTGA**ACTT**CTCATAGGCAACCTGGCCTTCTCCGACATCTTGGTCGCTCTGTTTT
 GCTCCCTTTACCCCTGACCTCTGTCTTGTGGATCAGTGGATGTTTGGCAAAGCCATGTGCCATATCAT
 GCCGTTCCCTCAATGTGTGTCAGTCTGGTTTCAACTCTGATTTAATATCAATTGCCATTGTCAGGTAT
 CATATGATAAAGCACCTATTTCTAACAATTTAACGGCAAACCATGGCTACTTCTGATAGCTACTGTCT
 GGACACTGGGCTTTGCCATCTGTTCTCCCTCCCAGTGTTCACAGTCTTGTGGA**ACTT**AAGGAGACCTT
 TGGCTCAGCACTGCTGAGTAGCAAAATATCTCTGTGTTGAGTCATGGCCCTGATTCATACAGAATTGCT
 TTCACAATCTCTTTATTGCTAGTGCAGTATATCTGCCTCTAGTATGTTTAA**CGGTAAGT**CATACCGG
 TCTGCCGAAGCATAAGCTGTGGATTGTCCCA**AAAGAAA**ACAGACTCGAAGAAAATGAGATGATCAACTT
 AACCTACAGCCATCCAAAAGAGCAGGAACCAGGCAAAAACCCCGAGCACTCAAAAAGTGGAGCTACTCA
 TTCATCAGAAAGCACAGAAGGAGGTACAGCAAGAGACGGCCTGTGTCTTACCCGCCAGCAGGACCTT
 CCCAGGGGAAGCACCTAGCCGTTCCAGAAAATCCAGCCTCCGTCGGTAGCCAGCTGTCGCCATCCAGTAA
 GGTCATTCCAGGGTCCCAATCTGCTTTGAGGTGAAACCTGAAGAAAGCTCAGATGCTCATGAGATGAGA
 GTCAAGCGTTCATCACTAGAATAAAAAAGAGATCTCGAAGTGTCTTCTACAGACTGACCATACTGATAC
 TCGTGTTCGCCGTTAGCTGGATGCCACTCCAGCTTCCACGTGGTGACTGACTTCAATGATAACTTGAT
 TTCCAATAGGCATTTCAAGCTGGTATACTGCATCTGTCACTTGTAGGCATGATGCTCTGTTGTCTAAAT
 CCGATCTATATGGTTTCTTAATAATGGTATCAAAGCAGACTTGAGAGCCCTTATCCACTGCCTACACA
 TGTA

ACGCGTACGCGGCCGCTCGAGCAGAACTCATCTCAGAAAGAGGATCTGGCAGCAAATGATATCTGGATT
 ACAAGGATGACGACGATAAGGTTTAA

Protein Sequence:

>RR214102 representing NM_012869
 Red=Cloning site Green=Tags(s)

MEFKLEEHNKTFVTENNTAAARNAAFP**AWEDYRGSVDDLQYFLIGLYTFVSL**LGFMGNLLILMAVMKKR
 NQKTTVNFLIGNLAFSDILVVLFCSPFTLTSVLLDQWMFGKAMCHIMPFLQCVSVLVSTLILISIAIVRY
 HMIKHPISNNLTANHG**YFLI**ATVWTLGFAIC**SPLPVF**HSLVELKETFSGALLSSKYLCVESWPSDSYRIA
 FTISLLL**VQYILPLVCL**TVSHTSVCRSIS**CGLSH**KENRLEENEMINLTLQPSKSRNQAKTPSTQKWSYS
 FIRKHRRRYSKKTACVLPAPAGPSQ**GKHLAVPENPASVRS**QLSPSSKVIPGV**PICFEVKPEE**SSDAHEMR
 VKRSITRIKKRSRSVFYRLTILILVFAVSW**PLHVFHV**VTFDNDNLISNRHF**KL**VYIC**HLLGM**MS**CC**LN
 P**ILY**GFLNNGIKADLRALIHCLHMS

TRTRPLE**QKLISEEDLA**AND**ILDYKDDDDK**V

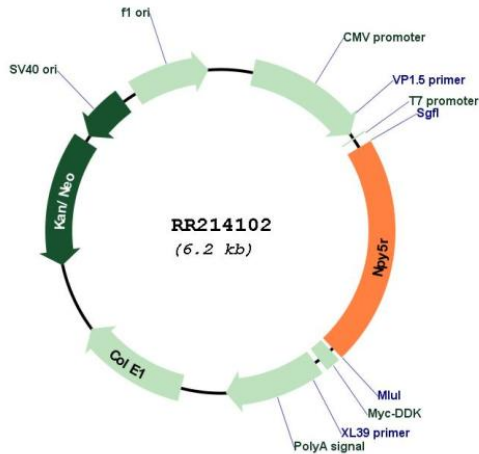
Restriction Sites:

Sgfl-MluI

Cloning Scheme:



Plasmid Map:



ACCN: NM_012869

ORF Size: 1335 bp

OTI Disclaimer: The molecular sequence of this clone aligns with the gene accession number as a point of reference only. However, individual transcript sequences of the same gene can differ through naturally occurring variations (e.g. polymorphisms), each with its own valid existence. This clone is substantially in agreement with the reference, but a complete review of all prevailing variants is recommended prior to use. [More info](#)

OTI Annotation: This clone was engineered to express the complete ORF with an expression tag. Expression varies depending on the nature of the gene.

Components: The ORF clone is ion-exchange column purified and shipped in a 2D barcoded Matrix tube containing 10ug of transfection-ready, dried plasmid DNA (reconstitute with 100 ul of water).

Reconstitution Method:

1. Centrifuge at 5,000xg for 5min.
2. Carefully open the tube and add 100ul of sterile water to dissolve the DNA.
3. Close the tube and incubate for 10 minutes at room temperature.
4. Briefly vortex the tube and then do a quick spin (less than 5000xg) to concentrate the liquid at the bottom.
5. Store the suspended plasmid at -20°C. The DNA is stable for at least one year from date of shipping when stored at -20°C.

RefSeq: [NM_012869.1](#), [NP_037001.1](#)

RefSeq Size: 2475 bp

RefSeq ORF: 1338 bp

Locus ID: 25340

UniProt ID: [Q63634](#)

Cytogenetics: 16p14

MW: 50.4 kDa

Gene Summary: receptor for neuropeptide Y and neuropeptide Y Y1; may be involved in regulation of energy homeostasis [RGD, Feb 2006]