

## Product datasheet for **RR214100**

### Cntnap1 (NM\_032061) Rat Tagged ORF Clone

#### Product data:

**Product Type:** Expression Plasmids  
**Product Name:** Cntnap1 (NM\_032061) Rat Tagged ORF Clone  
**Tag:** Myc-DDK  
**Symbol:** Cntnap1  
**Synonyms:** Caspr  
**Vector:** pCMV6-Entry (PS100001)  
**E. coli Selection:** Kanamycin (25 ug/mL)  
**Cell Selection:** Neomycin  
**ORF Nucleotide Sequence:** >RR214100 representing NM\_032061  
Red=Cloning site Blue=ORF Green=Tags(s)

TTTTGTAATACGACTCACTATAGGGCGCCGGAATTCGTCGACTGGATCCGGTACCGAGGAGATCTGCC  
GCCGCGATCGCC

ATGATGAGTCTCCGGCTTTTCAGCATTCTGCTCGCCGCTGTGGTCTCTGGAGCCCAGGGCTGGGGCTACT  
 ATGGCTGCAATGAGGAGCTGGTGGGCCCTCTGTATGCACGGTCTCTGGGTGCTTCCTCCTACTATGGACT  
 CTTTACCACAGCCCGCTTTGCCCGCTACACGGCATCAGTGGATGGTCCGCCGATTGGGGACCCGAAT  
 CCCTGGCTCCAGATAGACTTAATGAAGAAGCATCGAATCCGGGCTGTGGCCACACAGGGAGCCTTTAATT  
 CTTGGGATTGGGTCACACGTTACATGCTGCTCTACGGGGACCGTGTGGACAGCTGGACACCAATTCTACCA  
 ACAAGGGCACAACGCGACCTTCTTCGGTAATGTCAACGACTCGGGCGTGGTACGCCATGACCTGCACTAC  
 CATTTTACGGCTCGTACATCCGCATCGTCCACTGGCCTGGAACCCCGCGGCAAGATTGGCTTGAGGC  
 TGGGCATCTACGGTTGTCCCTACACGTCCAACATCCTGTATTTGACGGCGATGATGCCATTTACACCG  
 CTTCCAGCGAGGGGCCAGTCAAAGTCTTTGGGACGTGTTTCGCTTTTAGTTTCAAGACAGAGGAGAAGGAC  
 GGGCTGCTGTTGCACACCGAAGGCTCCCAGGGGATTATGTGACGCTTGAAGTCAAGGAGCACACCTGC  
 TGCTGCACATGAGCCTGGGCAGCAGCCCATCCAGCCGAGACCTGGTACACACCGGTGAGCGCTGGTGG  
 CGTACTTAATGACCTAAGCTGGCATTATGTGCGGGTGGACCGATACGGCCGAGAAGCAAATCTCACCTG  
 GATGGTTACGTACATCGCTTTGTGCTCAACGGCGACTTTGAAAGGCTGAATCTCGAAAATGAGATATTCA  
 TCGGAGGTCTAGTGGGCGCAGCGCGTAAGAACCTGGCCTACCGCCATAACTTCCGTGGCTGTATAGAAAA  
 CGTGATCTACAACCGGATCAACATAGCTGAAATGGCAGTGCAGCGCCATTCGCGGATCACCTTCGAGGGT  
 AATGTGGCTTTCCGGTGTGGATCCCCTTCCACACCCCATCAACTTCGGAGGCCCTCACAACCTCGTCC  
 AAGTGCCTGGCTTTCCACGTGAGGCGCCCTTGTGTCTCCTCCGCTTCCGCACCTGGGACCTCACAGG  
 GCTGCTCCTTTCTCCCGCTTGGGGATGGGCTGGGTCATGTGGAGCTGATGCTTAGTGAAGGGCAAGTC  
 AATGTATCCATCGCGCAGACTGGCCGCAAGAAGCTTCAGTTTGTGCGGGGTACCGCCTGAATGATGGCT  
 TCTGGCATGAGGTGAACCTTTGTGGCACAGGAAAACCATGCGGTATCAGTATTGATGATGTGGAGGGGGC  
 AGAGGTACAGGTATCATACCACTGCTGATCCGCACAGGGACTTCATACTCTTTGGTGGTTGTCCAAA  
 CCAGCCAGTCGATGGGGTGCCTCAACCCAGACAGCATTCCATGGCTGCATGGAGCTGCTCAAGGTGG



ATGGTCAACTGGTCAACCTCACTCTGGTAGAGTTTCGGAAGCTTGGTTACTTTGCTGAGGTCTCTTTGA  
CACATGTGGCATCACAGACAGATGCAGCCCTAATATGTGTGAGCATGATGGGCGTGCTACCAGTCTTGG  
GATGACTTCATCTGCTACTGCGAACCACCGGCTACAAGGGAGTTACCTGCCATGAACCATTGTATAAGG  
AGTCCTGTGAAGCCTATCGCCTCAGCGGAAATATTCTGGAAATTACACCATTGATCCTGATGGCAGTGG  
ACCCCTGAAACCATTTGTAGTGTATTGTGATATCCGAGAGAACCAGCATGGACAGTTGTGCGACATGAC  
AGGCTATGGACCACTCGAGTGACAGGTTCCAGCATGGACCGGCCCTTTCTGGGGCCATCCAATACTGTC  
ATGCCTCCTGGGAGGAAGTCAGTCTCTGGCCAATGCTTCCCAGCACTGTGAGCAGTGGATCGAGTTCTC  
CTGCTACAATTCCCGGCTGCTCAACACTGCAGGAGGCTACCCCTACAGCTTTTGGATTGGCCGAAATGAA  
GAACAGCATTCTACTGGGGAGGCTCCCAGCCTGGGATCCAACGCTGTGCCTGTGGGCTGGACCAGAGCT  
GTATAGACCCTGCACTGCACTGCAACTGCGATGCTGACCAGCCACAGTGGAGAACAGACAAGGGGCTCCT  
GACCTTTGTGGACCATCTGCCTGTCACTCAGGTAGTGATAGGTGACACAAACCGCTCCAGCTCTGAAGCT  
CAGTTCTCTGAGGCCTCTGCGCTGTTATGGTGACCGCAATTCTGGAACACTATCTCCTTCCGCACTG  
GAGCTGCACTGCGTTTCCCTCCAATCCGTGCCAACACAGCCTTGATGTCTCCTTCTACTCAGGACCTC  
GGCTCCCTCAGGAGTCTCCTAGAGAACATGGGGGCTCCTTTCTGCCAGTGGCGCCGACCTTACGTGAGA  
GTGGAGCTCAACACATCCCGGATGTGGTCTTTGCCTTTGATATTGGCAATGGGGATGAGAACCTGACAG  
TGCACTCAGATGACTTCGAGTCCAATGATGACGAGTGGCATTGGTCCGGGCTGAAATCAACGTGAAGCA  
GGCCCCGCTGCGAGTGGACCATCGGCCCTGGGTGCTAAGGCCATGCCCTGCAGACGTACATCTGGCTG  
GAGTATGACCAACCCCTCTATGTGGATCTGCAGAGCTTAAGAGGCGCCATTTGTGGGGTCTTGAGGG  
CCATGCGTTTGAATGGAGTGACTCTGAACCTGGAGGGTCTGCCAATGCCTCCGAGGGCACCTTCCCAA  
CTGCACGGGCCACTGCACCCACCCCGGTTCCCTGTTTCCACGGAGGACGCTGTGTGGAGCGATACAGC  
TACTACACGTGTGACTGTGACCTCACAGCTTTGATGGACCATATTGTAATCACGATATTGGTGGATTCT  
TTGAGACTGGACATGGATGCGCTATAACCTCCAGTCACTGCGTCTGCGGCCAGGAGTTCTCTCA  
CATGCTGAGCCGGCCGGTACCGGCTATGAGCCTGGCTATATCCAGGCTACGACACTCCTGGTTACGTG  
CCTGGGTACCATGGTCTGGGTACCGCCTACCCGACTACCCAAGGCTGGCCGGCCAGTGGCCGGATACC  
GGGGGCCGCTGTACAATGTTACTGGAGAGGAGTCTCCTTTAGCTTACGACACCAGCTCTGCTCCTGCAGT  
CCTGCTCTACGTGAGTCTCTTTGTGCGTGACTACATGGCCGTGCTCATCAAGGAAGATGGGACCCTACAG  
CTTCGCTATCAGCTGGGACCCAGTCCCTATGTGTACCAGCTAACCACCCGGCCAGTACCAGTGGCCAAC  
CCCATAGTGTCAACATCACCCGGGTCTACCGAACCTCTTTATCCAGGTGGACTACTTCCCGCTGACAGA  
ACAGAAGTTCTCTCCTGTTGGACAGCCAGTGGACTCCCCAAGGCCCTGTATCTAGGGCGTGTGATG  
GAGACAGGAGTCATTGACCCAGAGATTCAGCGGTACAACACCCAGGTTTCTCAGGCTGCCTGTCTGGT  
TCCGGTCAACAATGTGGCTCCTCTCAAGACCCATTTCCGAACCCCTCGCCCATGACTGCTGAGCTGGC  
GGAGGCCATGCGGTTCAAGGAGAACTGTCGGAGTCTAACTGTGGCGCTATGCCACGCCTTGTCTCCGAG  
GTGCCACCAGAGCTTGATCCCTGGTACCTGCCCCAGATTTCCATACTACCATGACGACGGATGGATTG  
CCATACTTAGGTTTTTTGGTGGCCTTCTGCTGCTGGGGCTTGTGGGAATGCTGGTGTGTTCTATCT  
GCAAAATCATCGATAACAAGGGCTCCTATCACACCAACGAGCCCAAGGCCACCCATGATCCACCCCTGGC  
GGCAAAGCTCCCTACCTCCCTCAGGCCCTGCCAGGCCCTGCCCCACTCCAGCTCCACCCAGGTTCC  
CGACCCAGCCCCAGCCCCAGCCTCTGGCCAGGCCCCAGGGACCAGAACCTCCCCAGATCTTGGAGGA  
GTCCAGGCTGAA

ACGCGTACGCGGCCGCTCGAGCAGAACTCATCTCAGAAGAGGATCTGGCAGCAAATGATATCCTGGATT  
ACAAGGATGACGACGATAAGGTTTAA

**Protein Sequence:** >RR214100 representing NM\_032061  
 Red=Cloning site Green=Tags(s)

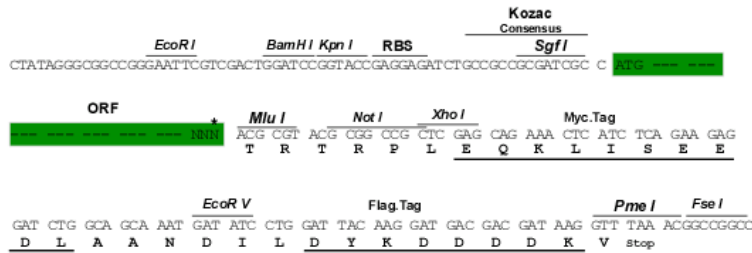
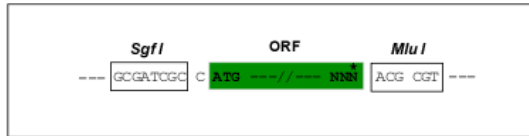
```
MMSLR LFSILLA AVVSGAQGWGYYGCNEELVGPLYARSLGASSYYGLFTTARFARLHGISGWSPRIGDPN
PWLQIDL MKKHRIRAVATQGA FNWDWVTRYMLLYGDRVDSWTPFYQQGHNATFFGNVNSAVVRHDLHY
HFTARYIRIVPLAWNPRGKIGLR LGIYGC PYTSN ILYFDGDDAISYRFQRGASQSLWDVFAFSFKTEEKD
GLLLHTEGSQGDYV TLELQGAHLLLHMSLGS SPIQPRPGHTTVSAGGVLNDLSWHYVRVDRYGREANLTL
DGYVHRFV LNGDFERL NLENEIFIGGLVGAARKNLAYRHNFRGCIENVIYNRINIAEMAVQRHSRITFEG
NVAFRCLDPVPHPI NFGGPHNFVQVPGFPRRGR LAVSFRFRTWDLTGLLLFSRLGDGLGHVELMLSEGQV
NVSIAQTGRKKLQFAAGYRLNDGFWHEVNFVAQENHAVISID DVEGAEVVSYPLLI RTGTSYFFGGCPK
PASRWGCHSNQTA FHGCMELLKVDGQLVNLTLVEFRKLG YFAEVLFDTCGITDR CSPNMCEHDGRCYQSW
DDFICYCELTGYKGVTCHEPL YKESCEAYRLSGKYS GNYTIDPDGSGPLKPFV VYCDIRENRAWTVVRHD
RLWTRVTGSSMDRPF LGAIQYWNASWEEVSALANASQHC EQWIEFSCYNSRLLNTAGGYPYSFWIGRNE
EQHFYWGGSQPGIQR CACGLDQSCIDPALHCNCDADQPQWR TDKGLLTFVDHLPVTQV VIGDTNRSSEA
QFFLRPLRCYGD RNSWNTISFR TGAALRFPPIRANHSLDVSFYFRTSAPSGV FLENMGGPFCQWRRPYVR
VELNTRSDVVF AFDIGNDENLTVHSDDFEFNDEWHLVRAE INVKQARLRVDHRPWVLRP MPLQTYIWL
EYDQPL YVGS AELKRRPFV GCLRAMRLNGVTLNLEGRANASEGTFPNCTGHCTHPRFPCFHGGRCVERYS
YYTCD CDLTA FDGPYCNHDI GGFETGTWMRYNLQSALRSAAQEF SHMLSRPVP GYEPGYIPGYDTPGYV
PGYHGPYRLPDYPRG RVPVPGYRGPVYVNTGEEVSFSFSTSSAPAVLL YVSSFVRDYM AVL IKEDGTLQ
LRYQLGTSPYVYQL TTRPVT DGGQPHSVNITRVYRNLFIQVDYFP L TEQKFSLLVDSQLDSPKALYLGRVM
ETGVIDPEIQRYNTPGF SGCLSGVRFNNAVPLKTHFRTPRPM TAEAEAMRVQGE LSESNCGAMPRLVSE
VPELDPWYLPDFPYHDDGWIA ILLGFLVAFLLGLVGMLVLFY LQNHRYKGSYHTNEPKATHDSHPG
GKAPLPPSGPAQAPAPTAPTQVPTPAPAPASGPGPRDQNL PQILEESRSE
```

TRTRPLEQKLISEEDLAANDILDYKDDDDKV

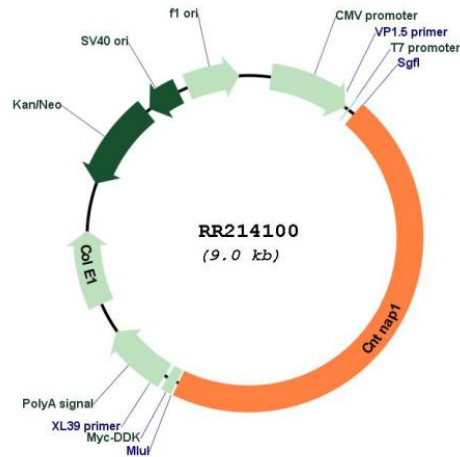
**Restriction Sites:**  
**Cloning Scheme:**

SgfI-MluI

Cloning sites used for ORF Shuttling:



\* The last codon before the Stop codon of the ORF

**Plasmid Map:**


**ACCN:** NM\_032061

**ORF Size:** 4143 bp

**OTI Disclaimer:** The molecular sequence of this clone aligns with the gene accession number as a point of reference only. However, individual transcript sequences of the same gene can differ through naturally occurring variations (e.g. polymorphisms), each with its own valid existence. This clone is substantially in agreement with the reference, but a complete review of all prevailing variants is recommended prior to use. [More info](#)

**OTI Annotation:** This clone was engineered to express the complete ORF with an expression tag. Expression varies depending on the nature of the gene.

**Components:** The ORF clone is ion-exchange column purified and shipped in a 2D barcoded Matrix tube containing 10ug of transfection-ready, dried plasmid DNA (reconstitute with 100 ul of water).

**Reconstitution Method:**

1. Centrifuge at 5,000xg for 5min.
2. Carefully open the tube and add 100ul of sterile water to dissolve the DNA.
3. Close the tube and incubate for 10 minutes at room temperature.
4. Briefly vortex the tube and then do a quick spin (less than 5000xg) to concentrate the liquid at the bottom.
5. Store the suspended plasmid at -20°C. The DNA is stable for at least one year from date of shipping when stored at -20°C.

**RefSeq:** [NM\\_032061.2](#), [NP\\_114450.1](#)

**RefSeq Size:** 5379 bp

**RefSeq ORF:** 4146 bp

**Locus ID:** 84008

**UniProt ID:** [P97846](#)

**Cytogenetics:** 10q31  
**MW:** 155.9 kDa  
**Gene Summary:** forms a complex with contactin; may mediate communication between glial cells and neurons during development [RGD, Feb 2006]