

Product datasheet for **RR214059**

Dyrk1a (NM_012791) Rat Tagged ORF Clone

Product data:

Product Type:	Expression Plasmids
Product Name:	Dyrk1a (NM_012791) Rat Tagged ORF Clone
Tag:	Myc-DDK
Symbol:	Dyrk1a
Synonyms:	Dyrk; PSK47
Mammalian Cell Selection:	Neomycin
Vector:	pCMV6-Entry (PS100001)
E. coli Selection:	Kanamycin (25 ug/mL)



[View online »](#)

ORF Nucleotide
Sequence:

>RR214059 representing NM_012791
 Red=Cloning site Blue=ORF Green=Tags(s)

TTTTGTAATACGACTCACTATAGGGCGGCCGGAATTCGTGCGACTGGATCCGGTACCGAGGAGATCTGCC
 GCC**CGGATCGCC**

ATGCATACAGGAGAGACTTCAGCATGCAAACCTTCATCTGTCCGGCTCGCACCGTCATTCTCATTCC
 ATGCTGCTGGCCTTCAGATGGCTGCACAGATGCCCCATTACATCAGTACAGTGACCGTCCGACGCCAAA
 CATAAGTGACCAGCAGGTTTCTGCCTTATCATATTCTGACCAGATTTCAGCAACCTCTAACTAACCAGGTG
 ATGCCTGACATTGTCATGTTACAGAGGCGGATGCCCAAACCTTCGGTATCCAGCAACTGCTCCTCTGA
 GAAAACCTCTGTGGACTTGATCAAACATACAAGCATATTAATGAGGTTTACTATGCAAAAAAGAAGCG
 AAGACACCAACAGGGCCAGGGGACGATTCTAGTCATAAGAAGGAGCGGAAGTTTACAACGATGGTTAC
 GATGACGATAACTATGATTACATTGTA AAAAACCGGAGAAAAGTGGATGGACCGTTATGAAATCGACTCCT
 TAATAGGCAAAGGTTCAATTTGGACAGTTGTGAAAGCATATGACAGAGTGAACAAGAATGGGTCGCCAT
 TAAAATCATCAAGAACAAGAAGGCGTTTCTGAATCAAGCGCAGATAGAAGTGGCGCTGCTTGAGCTCATG
 AACAAACATGACACTGAGATGAAGTACTACATAGTGCATTTGAAACGCCACTTTATGTTTCGGAACCATC
 TCTGTCTAGTGTTTGAATGCTGTCCTATAATCTCTATGATTTGTTGAGGAACACCAACTCCGAGGGGT
 CTCTTTGAACCTGACACGAAAGTTTGCACAACAGATGTGCACAGCATTGCTTTTCCTTGCGACTCCAGAA
 CTTAGTATCATTCACTGTGACTTAAAGCCGGAGAACATCCTTCTGTGTAACCCCAAACGAAGTGCAATCA
 AGATTGTTGACTTTGGCAGCTCTGTGAGTTGGGGCAGAGGATATACCAGTATATTCAGAGTCGCTTCTA
 TCGGTCTCCAGAGGTGCTACTGGGAATGCCTTATGACCTTGCTATCGACATGTGGTCCCTTGATGTATC
 TTGGTTGAAATGCACACTGGAGAGCCTCTGTTTCAGTGGTCCCAATGAGGTGGATCAGATGAATAAAATAG
 TGGAACTCTGGGCATCCACCTGCTCATATTCTTGACCAAGCACCGAAAGCAAGAAAGTTCTTTGAGAA
 GTTGCCTGATGGCACTTGGAGCTTAAAGAAGACCAAAGATGGAACCGGAGTACAAACACCAGGAACC
 CGTAAACTTCATAATATTCTTGGAGTGGAAACAGGAGGACCTGGCGGGCGCGTGTGGGGAGTCAGGTC
 ACACTGTAGTGACTACTTGAAGTTCAAAGACCTCATTTTAAGGATGCTTGATTATGACCCAAAACCTCG
 GATTCAACCTTATTATGCCCTGCAGCACAGTTTTTTCAAGAAAACAGCTGATGAAGGTACAAACACAAGC
 AACAGTGTGTCCACCAGCCCTGCCATGGAGCAGTCCCAGTCTTCAGGCACCACCTCCAGCACCTCCTCCA
 GCTCAGGTGGATCCTCGGAACGAGCAACAGTGGGAGAGCCAGGTCGGATCCGACGCACCAGCATCGGCA
 CAGTGGCGGGCACTTCGCTGCTGCTGTCCAGGCCATGGACTGTGAGACACATAGTCCCAGGTGCGCCAG
 CAGTTTCCGGCTCCTCTGGGCTGGTCAGGCACTGAAGCTCCTACACAAGTCACTGTTGAAACTCATCCTG
 TTCAAGAAAACAACCTTTTCATGTAGCCCTCAGCAGAATGCATTGCATCATCACCATGGAACAGTCCCA
 TCATCACCACCACCACCATCACCACCACCACCATGGACAGCAAGCCTTGGGTAAACCGGACCAGGCCA
 AGGGTCTACAATTCTCCAACAAATAGCTCCTCTACCCAGGATTCTATGGAGGTTGGCCACAGTCACCACT
 CCATGACATCCCTGTCTTCTCAACAACCTTCTCCTCGACATCTTCTCCTCTACTGGTAATCAAGGCAA
 TCAGGCCATCAGAACCGCCAGTGGCTGCTAACACCTTGGACTTTGGACAGAATGGAGCTATGGACGTT
 AATTTGACCGTCTACTCCAATCCCCGCCAAGAGACTGGCATAGCTGGACATCCAACATACCAATTTTCTG
 CTAATACAGGTCCTGCACATTACATGACTGAAGGACATCTGACGATGAGGCAAGGGGCTGATAGAGAAGA
 GTCTCCATGACAGGAGTTTGTGTGCAACAGAGTCTGTAGCTAGCTCG

ACGCGTACGCGGCCGCTCGAGCAGAAACTCATCTCAGAAGAGGATCTGGCAGCAAATGATATCCTGGATT
 ACAAGGATGACGACGATAAGGTTTAA

Protein Sequence: >RR214059 representing NM_012791
 Red=Cloning site Green=Tags(s)

MHTGGETSACKPSSVRLAPSFHAAQLQMAAQMPHSHQYSDRRQPNISDQQVSALSYSDQIQQPLTNQV
 MPDIIVMLQRRMPQTFRDPATAPLRKLSVDLIKTYKHINEVYAKKRRHQGGDDSSHKKERKVNDGY
 DDDNYDYIVKNGEKWMDRYEIDSLIGKGSFGQVVKAYDRVEQEWAIAIKIKNKAFLNQAQIEVRLLELM
 NKHDTEMKYYIVHLKRHFMRNHLCLVFEMLSYNLYDLLRNTNFRGVSLNLTRKFAQQMCTALLFLATPE
 LSIIHCDLKPENILLCNPKRSAIKIVDFGSSCQLGQRIYQYIQSRFYRSPVLLGMPYDLAIDMWSLGCI
 LVEMHTGEPLFSGANEVDQMNKIVEVLGIPPAHILDQAPKARKFFEKLPDGTWSLKTKDKGREYKPPGT
 RKLHNLGVETGGPGRRAGESGHTVADYLFKDLILRMLDYDPKTRIQPYALQHSFFKKTADEGTNTS
 NSVSTSPAMEQSQSSGTTSSSSSGGSSGTSNSGRARSDPTHQHRHSGGHFAAVQAMDCETHSPQVRQ
 QFPAPLWGSGETEAPTQVTVEHPVQETTFHVAPQQNALHHHHGNSHHHHHHHHHHHHHGGQALGNRTRP
 RVYNSPTNSSSTQDSMEVGHSHHSMTLSSTTSSSTSSSTGNQGNQAYQNRPAANTLDFGQNGAMDV
 NLTVYSNPRQETGIAGHPTYQFSANTGPAHYMTEGHLTMRQADREESPMTGVCVQQSPVASS

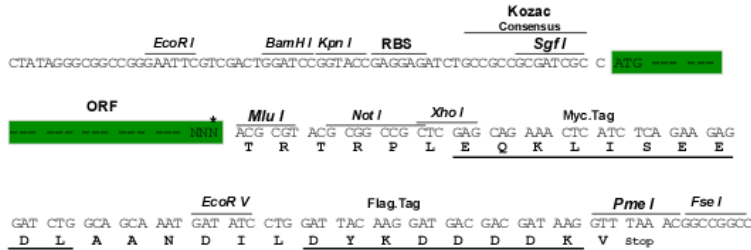
TRTRPLEQKLISEEDLAANDILDYKDDDDKV

Chromatograms: https://cdn.origene.com/chromatograms/ja2619_d07.zip

Restriction Sites: Sgfl-MluI

Cloning Scheme:

Cloning sites used for ORF Shuttling:



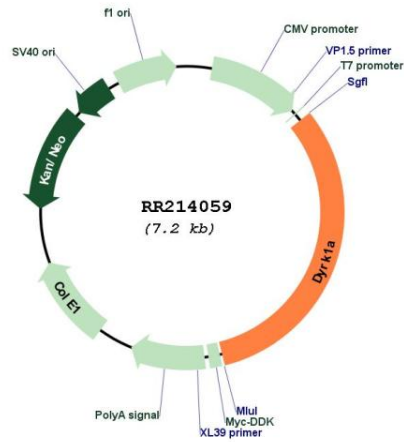
* The last codon before the Stop codon of the ORF

ACCN: NM_012791

ORF Size: 2289 bp

OTI Disclaimer:	<p>Due to the inherent nature of this plasmid, standard methods to replicate additional amounts of DNA in E. coli are highly likely to result in mutations and/or rearrangements. Therefore, OriGene does not guarantee the capability to replicate this plasmid DNA. Additional amounts of DNA can be purchased from OriGene with batch-specific, full-sequence verification at a reduced cost. Please contact our customer care team at custsupport@origene.com or by calling 301.340.3188 option 3 for pricing and delivery.</p> <p>The molecular sequence of this clone aligns with the gene accession number as a point of reference only. However, individual transcript sequences of the same gene can differ through naturally occurring variations (e.g. polymorphisms), each with its own valid existence. This clone is substantially in agreement with the reference, but a complete review of all prevailing variants is recommended prior to use. More info</p>
OTI Annotation:	<p>This clone was engineered to express the complete ORF with an expression tag. Expression varies depending on the nature of the gene.</p>
Components:	<p>The ORF clone is ion-exchange column purified and shipped in a 2D barcoded Matrix tube containing 10ug of transfection-ready, dried plasmid DNA (reconstitute with 100 ul of water).</p>
Reconstitution Method:	<ol style="list-style-type: none">1. Centrifuge at 5,000xg for 5min.2. Carefully open the tube and add 100ul of sterile water to dissolve the DNA.3. Close the tube and incubate for 10 minutes at room temperature.4. Briefly vortex the tube and then do a quick spin (less than 5000xg) to concentrate the liquid at the bottom.5. Store the suspended plasmid at -20°C. The DNA is stable for at least one year from date of shipping when stored at -20°C.
RefSeq:	NM_012791.3
RefSeq Size:	2840 bp
RefSeq ORF:	2292 bp
Locus ID:	25255
UniProt ID:	Q63470
Cytogenetics:	11q11
MW:	86 kDa
Gene Summary:	<p>catalyzes the phosphorylation of dynamin 1 and regulates dynamin 1 interaction with amphiphysin 1; may regulate assembly of the endocytic apparatus [RGD, Feb 2006]</p>

Product images:



Circular map for RR214059