

Product datasheet for **RR214047**

Zfx (NM_001109017) Rat Tagged ORF Clone

Product data:

Product Type:	Expression Plasmids
Product Name:	Zfx (NM_001109017) Rat Tagged ORF Clone
Tag:	Myc-DDK
Symbol:	Zfx
Synonyms:	RGD1562664
Vector:	pCMV6-Entry (PS100001)
E. coli Selection:	Kanamycin (25 ug/mL)
Cell Selection:	Neomycin
ORF Nucleotide Sequence:	>RR214047 representing NM_001109017 Red=Cloning site Blue=ORF Green=Tags(s)

TTTTGTAATACGACTCACTATAGGGCGCCGGAATTCGTCGACTGGATCCGGTACCGAGGAGATCTGCC
GCC**CGGATCGCC**

ATGGATGAAGATGGACTGAATTACAACCACAAGCACAACTCATTTTTTGGATGCAACAGGAGCTGGTG
CTACACACATGGATGGAAATCAAATTGTTGGAAGTACAAGAAACGGTTTATGTGTGATGTTGTGGA
TTCAGACATAACCGTTCATAACTACGTTCCCGATGACCCAGACTCAGTTGTAATCCAAGATGTTATTGAG
GATGTTGTTATAGAAGATGTCCAATGTACAGATATCATGGACGAAGCAGATGTGTCCGAAACAGTATCA
TCCTGAACAAGTCCGATTGATGTAACCGAAGAAGTTTCTTTAACGCATTGCACAGTTCAGATGA
TGTTTTAGCTTCCGATATTACTTCAGCCTCAATATCTATGCCTGAACATGTCTTGACAAGTGAATCTATA
CATGTGTCTGACGTTAGTCACGTTGAACATGTGGTTTCATGATAGTGTAGTAGAAGCAGAAATCGTCACAG
ATCCTCTGACCGCTGATGTTGTTTCGGAAGAAGTGTGGTAGCAGACTGTGCCTCTGAAGCAGTCATAGA
TGCCAACGGGGTCCCTGTGAACCAGCAGGATGAAGACAAAGCAACTGTGAGGACTACCTTATGATCTCT
TTGGATGATGCTGGTAAAATAGAACATGATGGTTCATCTGGACTGACTATGGACAACGAAACAGAAATG
ATCCTTGTAAAGTGGATGGCACTTGCCCTGAAGTCATCAAGGTGTACATTTTTTAAAGCTGATCCTGGAGA
AGATGACTTAGGTGGAACCGTAGACATTGTGAAAGCGAGCCTGAGAACGAGCATGGGGTTGAAGTCTT
GATCCAAACAACAGTATGCGTGTCCAGAGAAAAGATGGTTTATATGGCTGTTAATGACTCAGCAAG
AAGAGGAAGAATTGAATGTTGCTGAAATGCTGATGAAGTTTATATGGAAGTATTGTTGGAGAGGAGGA
TGCTGCAGCCGACGTCAGCCGAGTGCATGAACAGCAAGTGGAGGACAACGAAATGAAAACCTTCATG
CCGATTGCGTGGCAGCTGCTTACGTAATAATTCTGATGGAATTGAAAACCGGAATGGCACTGCAAGTG
CCCTCTTGACATAGATGAGTCTGCTGGCTCGGACAGACTGGCTAAACAAAACCAAGAAAAGGAGAAG
ACCTGATCCAGGCAGTACCAAACAGAATCATCTACAATCAGTACAGAACAATGATTGGACTATTTAAC
ATATATTTTTTTAAA

ACGCGTACGCGGCCGCTCGAGCAGAAACTCATCTCAGAAGAGGATCTGGCAGCAAATGATATCCTGGATT
ACAAGGATGACGACGATAAGGTTTAA



[View online »](#)

Protein Sequence: >RR214047 representing NM_001109017
 Red=Cloning site Green=Tags(s)

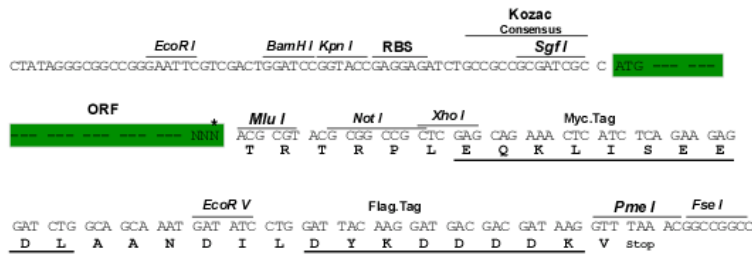
MDEGLLELQPQAPNSFFDATGAGATHMDGNQIVVEVQETVYVSDVVDSDITVHNYVPDDPDSVVIQDVIE
 DVVIEDVQCTDIMDEADVSETVIIPQVLDSVTEEVSLTHCTVPDDVLAASDITSASISMPHEVLTSESI
 HVSDVSHVEHVHDSVVEAEIVTDPLTADVVEEVLVADCASEAVIDANGVPVNOQDEDKANCEDYLMIS
 LDDAGKIEHDGSSGLTMDNETEIDPCKVDGTCPEVIKVIYFKADPGEDDLGGTVDIVSEPENEHGVELL
 DPNNSMRVPREKMYMAYNDTQEQEEELNVAEIADEVYMEVIVGEEDAAAAAAAVHEQQVEDNEMKTFM
 PIAWAAAYGNNSDGIENRNGTASALLHIDESAGLGRLAKQPKPKRRRPPDSRQYQTESSTISTEQMIGLNF
 IYFFK

TRTRPLEQKLISEEDLAANDILDYKDDDDKV

Restriction Sites:
Cloning Scheme:

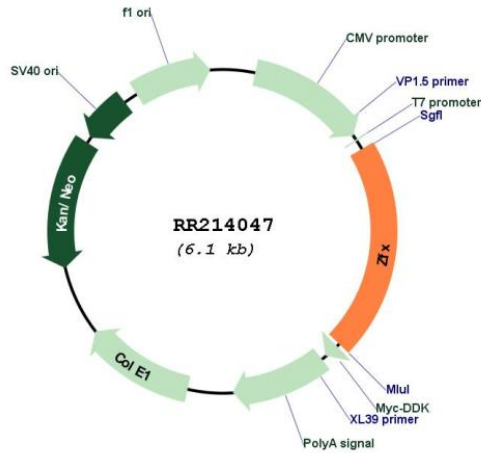
SgfI-MluI

Cloning sites used for ORF Shuttling:



* The last codon before the Stop codon of the ORF

Plasmid Map:



ACCN: NM_001109017

ORF Size:	1275 bp
OTI Disclaimer:	The molecular sequence of this clone aligns with the gene accession number as a point of reference only. However, individual transcript sequences of the same gene can differ through naturally occurring variations (e.g. polymorphisms), each with its own valid existence. This clone is substantially in agreement with the reference, but a complete review of all prevailing variants is recommended prior to use. More info
OTI Annotation:	This clone was engineered to express the complete ORF with an expression tag. Expression varies depending on the nature of the gene.
Components:	The ORF clone is ion-exchange column purified and shipped in a 2D barcoded Matrix tube containing 10ug of transfection-ready, dried plasmid DNA (reconstitute with 100 ul of water).
Reconstitution Method:	<ol style="list-style-type: none">1. Centrifuge at 5,000xg for 5min.2. Carefully open the tube and add 100ul of sterile water to dissolve the DNA.3. Close the tube and incubate for 10 minutes at room temperature.4. Briefly vortex the tube and then do a quick spin (less than 5000xg) to concentrate the liquid at the bottom.5. Store the suspended plasmid at -20°C. The DNA is stable for at least one year from date of shipping when stored at -20°C.
RefSeq:	NM_001109017.1 , NP_001102487.1
RefSeq Size:	3072 bp
RefSeq ORF:	1278 bp
Locus ID:	367832
Cytogenetics:	Xq22
MW:	46.3 kDa