

## Product datasheet for **RR214009**

### Arhgef28 (NM\_001108542) Rat Tagged ORF Clone

#### Product data:

Product Type:	Expression Plasmids
Product Name:	Arhgef28 (NM_001108542) Rat Tagged ORF Clone
Tag:	Myc-DDK
Symbol:	Arhgef28
Synonyms:	Rgnef
Vector:	pCMV6-Entry (PS100001)
E. coli Selection:	Kanamycin (25 ug/mL)
Cell Selection:	Neomycin
ORF Nucleotide Sequence:	>RR214009 representing NM_001108542 Red=Cloning site Blue=ORF Green=Tags(s)

TTTTGTAATACGACTCACTATAGGGCGGCCGGGAATTCGTCGACTGGATCCGGTACCGAGGAGATCTGCC  
GCC**GCGATCGC**C

ATGGAGCTGAGCTGCAGTGAAGTGCCTCTTTACGGACAGAGGACGGTCTATGCAAAGTTCGGCAAAAACG  
TTTATCTTCTGAAGATGCGGAGTATTACTTTATTTATGATGGGTCGCATCAGAGGCACGTGGTATTGC  
GGATCGTGTGGAGATAATGTTCTCCAGTCTATCATTCCAGGCCATTGGCTTCAAGAGACGGTGTGGTA  
TCTGTGTGCCTCTGCTCAGAAGGGTATCCCGGTGACCATGGGCTCTGGCTCAGTGACCTATGTGGACA  
ACATGGCCTGCAGGCTGGCTCGTCTGCTGGTCACTCAGGCTGACCGACTCACGCCCTGTAGTCCACAGAC  
ACTGCTGACCCCGTTTGGCCTGACAGCAGAAGCGCTGCCTGCCTTGGATGAGGAACTCGTGTGGCTCTG  
ACCCAAGTGGAGCTGCCTTTGGGTTGGACAGTCTGGGAAATTCCTCACTTGAAGTGTGTCTACACAGAG  
AGTCTCTCCTGCACCTGGCAGTGAAGTGGGCCCCGCCTAAGCTATTCCATTTCTTGTGCCTCCCTGG  
AGGAGTCAAGGCCTTGGAGCTACCTAATGAAGAGGCCACCACACCATTAGACTTAGCCTTGCATGGCGGA  
CACTCTATGCTGGTGAAGACATCTCAAATTTTCAGGGTCGCCGCTCCCAGGCTTCTCCGACTGCGTC  
TTAATGAAGATGCCACGCTGCAGTTCGATCGGTATCAGAAACGTTGACGCTGACCGTTAACACACAGC  
TGAGCATCTGTTGAAGCAGATATCAAACCTTCCGGAAGTATTTCTGGGACAGAGCCTTCTTGTCAAG  
GCTCTTGTATCAAGAAGCCAAGACAGAGAGGCAACCATGCCTTCTGGAGCTGCGGAAACTGAAGAAGAGG  
TTAGGAATCTGGAGTCTGGCAGATCACCTCAGAAGAGGAGGAGGATGGACAGCTCGTCAAAAGCCAGGC  
CGACGGCCGAGTGAACAGGAAGACCAGGACCGCTAGTTTTGGATCACTCCTTTGATGGCCTCAAAAAG  
TCCAAGCAGCCCCAGCGTCCCTTGTCTGACGGCCAGCTCTCTGACGTGCCGAATGGGGGTGACGAAGTCT  
ACGCTAACTGTATGGTATTGATCAGGTTGGCGATTTGGACATCACTATATAACATAGAGGGACTCTC  
CACCCATACTAGCCCGGAGTCCATGAGGTCCACTCTGGGGCCTCAGGCTTGTAAAGCACATCCTTCTCCT  
GACACCAGTCCCTGCGGGCACCTGCTCTGTGAGGACAGTGACAGGACCTGGATGCTGCAGCCTCTCAGT  
CCTGCATGTCACCACCCAGTTCTCACACTTCCAACCTTGAACCTTTCTTTTGGTCTCCATGGATTTGTAAG  
GGAGCAGAGTCATCTCAAGAAAAGAAGTTCTAGCCTGGATGCCCTCGTTGCCGACAGTGAAGAGGAAGGG  
CGTTCTGAGCCCCCATCTGCTATGCTGTGGCTCTCAGAGTCCCCCAGAAGTGGGCTCCCCGGCGGAG



[View online »](#)

ATGAACTGGATTCTTTGATGCGAACACCGAACCAAGACTGTAACATCTCTAGGACCGAATCACTTCCCT  
 GTCCAGCACTCTGCATTGCAAGGAGTCCCTGCTTCTGGGATCCGATCACGCTCTACTCTGCTCATCA  
 CCCAAATCTCTTCAGGAAAATCCCGGCTAGTGCAGGATTTACAGTGTGCAGTTCAGTGAAGAACAGA  
 GATCATATAGTTTCCAGGAGCCACCGGAGAAAAAAGAATTGAGGAAGAAGATGGGACGACTACATCAT  
 TCCTGCCAAAGCAGAGTCCGAAAAGCACAAAGTGAAGCCGACTTTCAGCTTCTCATGAACAGGATGACC  
 AGTCCCTCGGAACAAATCTAAGATGAAAAACAAGGACACTAAAGATAAAGAAAACTCACTCGACATCAGT  
 TTGTCGCGGGAACGTTCTGGAGTTCTGCAGTGTTCGGTGTGACAAAAACACTCCTGGGGAAGATC  
 ACTCCAGTGTGCCAAGTCAAGGCCAACACACAAGGGCTGCAAGACACTGTGCCTCGGTGTACCAAG  
 AAATTCGAAGACAAATACAACAAGAAACAAACCACAGACCATCCTCGAAGCTCTTCAGTTAGAGACGTCC  
 CACCGCTGGGCTCTCCTTGACCCCTCCCTCCATGCCTATTGGACTGCCAGCTGGAAGGAAGGAAAC  
 TGCAGGGCAGGCACATCCGTTGTCCAGAAGTGTCCAGGCACCACTTTGGAAAGCTTCAGGAGGGCAGTG  
 ACATCCTTGAGTCTGAGGGTGACAGTAAACAGCTGGAGAAGCAGGTCTCATTCCGATGAGCTGTTCCAGT  
 CCATGGGCTCGTCTCCTCCACGGAGTCATTATGATGGAAGATGTCGTGGATTCTTCTGTGGAGTGA  
 GCTCAGCAGTGTGCTCAAGAGTTTGAAGCTGAGTCTGGAGTCTCGTGGTGGACCTTCTTCTGCAGC  
 AGACAGGAGAAGGATGTCATCAAAGACAGGATGTCATTTTTGAGCTGATGCAGACGGAGGTGCCACACA  
 TCCAGACACTGCTCATCATGTCTGAAGTCTTCAGGAAGGCATGAAGGAGGAGCTGCAGCTGGACCACAG  
 CACGGTGGACAGGATCTCCCTGCTTAGATGAGCTGCTGGAGACTCACAAAGCATTTCTTCTCAGCATG  
 AAGGAGCGCAGGCAGGAGTCTGCACCGCAATGACAGGAACTTTGTGATCAACCAAATCGGAGACATTT  
 TGGTACAACAGTTTTCAGAAGAAAATGCAAGCAAGATGAAGAGGATCTATGGAGATTTCTGCAGCCATCA  
 CAAAGAAGCCATGAGCCTCTTTAAAGAGCTCCAGCAGAACAAAAGTTTTCAGATTTTATTAAGATCCGA  
 AATAGCAACCTGTTGGCCGTCGCCGTGGAATCCAGAGTGCATCCTGCTGTACCCAGCGCATACGA  
 AGTACCCGGTCTTGGTGGAGAGGATCCTGCAGTACACCAAGGAAAGACCGAAGAGCAGAGACCTGTG  
 TAGAGCTCTTGGCTTAATTAAGACATGATCGACCCGTTGGACCTGAAAGTCAGTGAATATGAGAAGA  
 CAAAAATGGCTCGAGATCCTAAAATAAAATCGAGAACAACAAACATACACAAAGCTCAAAAAATGGCCAGTGT  
 TTAGAAGCAGGCGTGTGAGCCAAGAAAGGGCTCTTCTGCACGACGGGCTCGTTTACTGGAAAATGC  
 GACAGGCCGTTTCAAAGACATCCTGGCCCTGCTTCTCACCGATGTGCTGCTTCTTTCAGAAAAGAC  
 CAGAAGTATATCTTTCAGCTGTTGACCAGAAGCCTTCAGTTATTTCCCTTCAGAAGCTCATCGTAGGG  
 AAGTCGCCAACGAGGAGAGAGGCATGTTTCTCATCAGTGTTCGTGAGCGGGTCCCGAGATGTATGAAAT  
 CCACACCAGTTCCAAAGAGGAACGGAATAACTGGATGAGGCGGATCCAGCAGGCAGTGAAGAGTTGTCCA  
 GAAGAAGAAGGAGGAAGGACAAGTGAAGTCTGATGAAGAGAGGCGGAAAGCTGACGCTAGAGTGGCCAAA  
 TTCAGCAATGTCAAGAGATTCTCAGCAACCAAGACCAGCAGATCTGCACATATTTGGAAGAAAAGCTGCA  
 CATCTACGCTGAGCTTGGGAACTAAGTGGCTTTGAGGATGTCCACCTAGAACCCTACTGCTCATCAAG  
 CCCGACCCCGGAGAACCTCCCAAGGCAGCCTCCCTGCTTGCAGCAGCCCTGAGAGAAGCTGAGAGTCTGC  
 AAGTTGCTGTGAAGGCTTCAAAGCTGGCTGATGTAAGCCAGCCATCTGAAGAAGGCCCTGGAGGGGCTGT  
 CCTGGCTGACACACTCAGTGCACAAGATGCACCAGCATCGCCGACTGCCCTCACAGAAGGGACAGAAGGA  
 AGAGGCTGTGGGATGTGGATCCCGGCTCCAGGGTGTGGTAACGGACTTGGCGGTCTCTGATGCAGGGG  
 AGAAGGTGGAATATAGAAGTTTTCCGGTCTTCACAATCAGAGATTATACAAGCGATACAGAACCTAAC  
 GCGTCTCCTCTACAGCCTTCAGGCTGCCTTGACCATCCAGGACAGCCACATTGAGATCCACAAGCTAGTT  
 CTACAGCAGCAGGAGAGCTTGGCCCTAGCCACTCCTCCGAGGTGGCCCTTGAAGACCAGGAGAAAT  
 CCCGTTACCTGGAAAAGCATCGTGAAGAGCTGGCCAACATCCACAAGCTCCAGTACCAGTTCCAACAAGA  
 GCAGCGCGTGGCACCCACATGTGACCAGCAACAGCGTGAAGAGGAGCCAAAGAGAGCTGGTGCAG  
 GCACGGGAACGTGAGTGCAGTGCAGGAGGAATTACTGCTGCGCCACCGTAGCGAACTGGACCACCAAC  
 TCCAGGAGTACCAGCAGAACCTCGAGCGGTTGCGGGAGGGCCAGAGGATGGTGGAGAGGGAGAGGCAGAG  
 GATGCGTGACCAGCAGGCTGCTGGGCCACTGTAAGCATAGTCGCCAGAGGAGCCTCCAGCCGCTTCT  
 TCTCCGGGAGCAAAGAGGTAAACGAACTTAATCGAGCTGAGAGTTTGTGTCATGAAAAATCATTTTTCC  
 TCAATGACGCCTTACACACATGTCGTTAACACATCCAATAAACCAAACCCATCAGGTGCCCTGGGA  
 CGCTACCCCCAGGTGGTCTCATCTTGATTTGGCAAGGACTAGTGATAGTCAGATAGAAGTGAAGATG  
 GACGTTTCTCAGCCTTCCGATGTCAACTCTGAACTCTGGACAACAGGGCTGGGCCCTCAGAGACCTGCTC  
 GCCAAGAAAGCATCAAGGATTCTTGAAAAATGTTGCAGATTTGAACTCCTTCCAGACTGAATCCCCAGA  
 TCCCCAGGACTCAAATCAACGTGGCCCTCAGCCACAGACACTATAACAGAAGCAAACTAACTCCCCCG  
 ATGGCGGCCGGACATGGTGGAGATGCTGGGATGGAGCTGAAGAGAACATTGTTTACCTC

AGCGGACCGACGCGTACGCGCCGCTCGAGCAGAACTCATCTCAGAAGAGGATCTGGCAGCAAATGATATCC  
TGGATTACAAGGATGACGACGATAAGGTTAA

**Protein Sequence:**

>RR214009 representing NM\_001108542  
Red=Cloning site Green=Tags(s)

MELSCSEVPLYGQRTVYAKFGKNVYLPEDA EYFYIDGSHQRHVVIADRVEDNVLQSIIPGHWLQETVMV  
SVCLCSEGYSPVTMGSGSVTYVDNMACRLARLLVTQADRLTPCSHQTLTPFALTAELPALDEELV LAL  
TQLELPLGWTVLGNSSLEVCLHRESLLHLAVRWALPKLFHFLCLPGGVKALELPNEEATTPDLALHGG  
HSMLVEDISNFQGRSPGFSRLRLNEDATLQFDRSSETLTLVNHTAEHLLLEADIKLFRKYFWDRAFLVK  
ALDQEAKTERATMPSGAAETEEVEVRNLESGRSPSEEEEDGQLVKSQADGPSEQEDQDRLVLDHSFDGLKK  
SKHAPASLAAGQLSDVPNGGDEVYANCMVIDQVGDLIDYINIEGLSTHTSPESMRSTLGPQACKHILPP  
DTSPCGHLLCEDSDRTLDAASQSCMSPSSHTSNLNL SFGHLGFVKEQSHLKKRSSLDALVADSEEEG  
RPEPPICYAVGSQSSPRTGLPGGDELDFDANTEPCDNISRTESSLSTLHKSHELLSGIRSRYSYSCSS  
PKISSGKSRVLDFTVCSSEEQRSYSFQEPGGEKRIQEEEWDDYIIPAKAESEKHKVSRTF SFLMNRMT  
SPRNKSKMKNKDTKDKELNRHQFVPGTFSGVLQCSGCKTLLGKESLQCANCKANTHKGCKDTPVPCTK  
KFQDKYNKNKPTILGSSSVRDVPPGLSLHSPSPMPIGLPAGRKETAGQAHP LRSRVPGTTLESFRRAV  
TSLESEGDSNSWRSRSHDELFSQMGSSPSTESFM MEDVVDSSLWSELSSDAQEFAESWSLVVDP SFC  
RQEKDVIKRDVIFELMQTEVHHIQTLIMSEVFRKGMKEELQLDHSTVDRIFPCLDELLETHKHF F SM  
KERRQESCTGNDRNFINQIGDILVQFSEENASKMKRIYGD FCSHHKEAMSLFKELQQNKKFQNF IKIR  
NSNLLARRRGIPECILLVTQRITKYPV LVERILQYTKERTEEHRDLCRALGLIKDMIAAVDLKVSEYKN  
QKWLEILNKIENKTYTKLNGHVFRKQALMSQERALLHDGLVYWK TATGRFKDILALLLTDVLLFLQEKD  
QKYIFAAVDQKPSVISLQKLIAREVANEERGMFLI SASSAGPEMYEIH TSSKEERNNMRRIQQAVESCP  
EEEGGRTSE SDEERRKADARVAIQCCQEILSNQDQQICTYLEEKLHIYAELGELSGFEDVHLEPHLLIK  
PDPGEPQAA SLLAAALREASLQVAVKASKLADVSQPS EEGPGGAVLADTL SAQDAPASPTAFTEGTEG  
RGCWDVDPRLQGVVTDLAVSDAGEKVEYRSFSGSSQSEI IQAIQNLTRLLYSLQAALTIQDSHIEIHKLV  
LQQQESLAPSHSFRGGPLQDQEKSRYLEKHREELANIHKLQYQFQQEQRRWHRTCDQQQREQEAQESWLQ  
ARERECQSQEELLLRHRSELDHQLQEYQQNLERLREGQRMVERERQRMRDQQGLLGHCKHSRQ RSLPAVF  
SPGSKEVTELNRAESLCHKESFFLNDAFTHMSLNTSNKPNP SGAPWDAHPPGGSHLDLARTSDS QIEVKM  
DVSQPSDVNSELWTTGLGPQRPARQESIKDSCKNVADLNSFQTESPDPQDSNQRGPQPQTLITEAKLTPP  
MAAGHGDAGDGAENIYYL

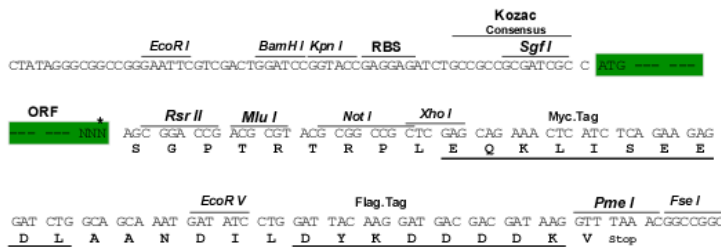
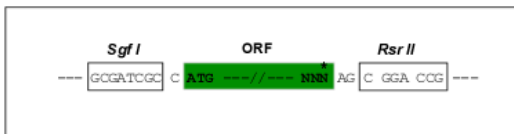
SGPTRTRPLEQKLI SEEDLAANDILDYKDDDDKV

**Restriction Sites:**

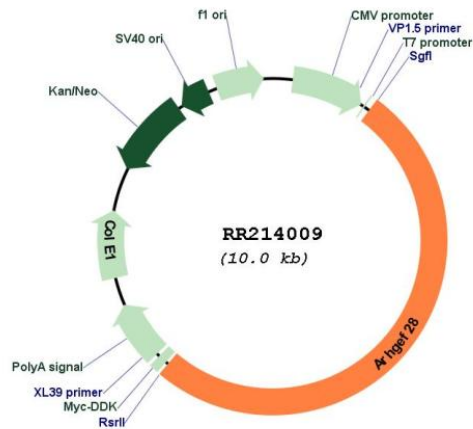
SgfI-RsrII

**Cloning Scheme:**

Cloning sites used for ORF Shutting:



Plasmid Map:



ACCN: NM\_001108542

ORF Size: 5100 bp

OTI Disclaimer: The molecular sequence of this clone aligns with the gene accession number as a point of reference only. However, individual transcript sequences of the same gene can differ through naturally occurring variations (e.g. polymorphisms), each with its own valid existence. This clone is substantially in agreement with the reference, but a complete review of all prevailing variants is recommended prior to use. [More info](#)

OTI Annotation: This clone was engineered to express the complete ORF with an expression tag. Expression varies depending on the nature of the gene.

<b>Components:</b>	The ORF clone is ion-exchange column purified and shipped in a 2D barcoded Matrix tube containing 10ug of transfection-ready, dried plasmid DNA (reconstitute with 100 ul of water).
<b>Reconstitution Method:</b>	<ol style="list-style-type: none"><li>1. Centrifuge at 5,000xg for 5min.</li><li>2. Carefully open the tube and add 100ul of sterile water to dissolve the DNA.</li><li>3. Close the tube and incubate for 10 minutes at room temperature.</li><li>4. Briefly vortex the tube and then do a quick spin (less than 5000xg) to concentrate the liquid at the bottom.</li><li>5. Store the suspended plasmid at -20°C. The DNA is stable for at least one year from date of shipping when stored at -20°C.</li></ol>
<b>RefSeq:</b>	<u>NM_001108542.1, NP_001102012.1</u>
<b>RefSeq Size:</b>	6195 bp
<b>RefSeq ORF:</b>	5103 bp
<b>Locus ID:</b>	361882
<b>Cytogenetics:</b>	2q12
<b>MW:</b>	190.8 kDa
<b>Gene Summary:</b>	Functions as a RHOA-specific guanine nucleotide exchange factor regulating signaling pathways downstream of integrins and growth factor receptors. Functions in axonal branching, synapse formation and dendritic morphogenesis. Functions also in focal adhesion formation, cell motility and B-lymphocytes activation. May regulate NEFL expression and aggregation and play a role in apoptosis.[UniProtKB/Swiss-Prot Function]