

## Product datasheet for **RR213992**

### **Hcn1 (NM\_053375) Rat Tagged ORF Clone**

#### **Product data:**

Product Type:	Expression Plasmids
Product Name:	Hcn1 (NM_053375) Rat Tagged ORF Clone
Tag:	Myc-DDK
Symbol:	Hcn1
Vector:	pCMV6-Entry (PS100001)
E. coli Selection:	Kanamycin (25 ug/mL)
Cell Selection:	Neomycin



[View online »](#)

ORF Nucleotide  
Sequence:

>RR213992 representing NM\_053375  
 Red=Cloning site Blue=ORF Green=Tags(s)

TTTTGTAATACGACTCACTATAGGGCGGCCGGGAATTCGTGACTGGATCCGGTACCGAGGAGATCTGCC  
 GCC**CGCATCGCC**

ATGGAAGCGCGCGCAAGCCAACTCCGCTTCCAACAGCCGCGACGATGGCAACAGCGTCTACCCCTCCA  
 AGGCGCCCGCGACGGGGCCGGCGCGCGGCGACAAGCGCCTGGGGACCCCGCGGGGGCGGCGCGGCCGG  
 GAAGGAACACGGCAACTCCGTGTGCTTCAAGGTGGACGGCGGCGAGGAGAGAGCCGGCGGCGAGCTTC  
 GAGGATGCCGAGGGGCCCGGCGACAGTACGGTTTCATGCAGAGGCAGTTCACCTCCATGCTGCAGCCTG  
 GGGTCAACAAATTCCTCCCGCATGTTCCGGGAGCCAGAAGGCGGTGGAGAAGGAGCAGGAAAGGTTAA  
 AACTGCAGGCTTCTGGATTATCCATCCGTACAGTACTTCAGGTTTTATTGGATTTAATAATGCTTATA  
 ATGATGGTTGAAATTTGGTCATCATACCAGTTGGAATCACATTCTTCACAGAGCAAACAACACCCGT  
 GGATTATTTTCAATGTGCATCAGATACAGTTTTCTGTTGGACCTAATCATGAATTTTAGGACTGGGAC  
 TGCAACGAAGACAGCTCTGAAATCATCTGGACCCTAAAGTAATCAAGATGAATTTTAAAAAGCTGG  
 TTCGTGGTGGACTTCATCTCCTCGATCCCGGTGGATTATATCTTTCTTATTGTAGAGAAAGGAATGGATT  
 CGGAAGTTTACAAGACCGCCAGAGCACTTCGGATCGTGAGGTTTACAAAAATTCAGTCTCTTGCCTTT  
 ATTACGCCTTCAAGTTAATTAGATACATACACCAGTGGGAAGAGATATCCACATGACATATGATCTC  
 GCCAGTGCAGTGGTGAGAATCTTCAACCTCATTGGCATGATGCTGCTCCTGTGTCAGTGGGATGGCTGTC  
 TTCAGTTTCTGGTCCCTCTGCTGCAGGACTTCCACCGGATTGCTGGGTTTCTCTAAATGAAATGGTTAA  
 TGATTCATGGGGAAACAGTATTCCTACGCACTTCAAAGCTATGAGTCACATGCTGTGCATTGGTTAT  
 GCGCCCGAGCCCGCTCAGCATGTCTGACCTCTGGATTACCATGCTGAGCATGATTGTTGGGGCCACT  
 GCTATGCCATGTTTGTGCGCCATGCCACAGCTTTGATCCAGTCTCTGGATTCTTCAAGGAGCAGTATCA  
 AGAGAAGTACAAGCAAGTAGAGCAATACATGTCATTCCACAAGTTACCAGCTGACATGCGCCAGAAGATA  
 CATGATTACTATGAGCACCGATACCAAGCAAGATCTTCGATGAGGAAAAATTCTCAGTGAACCTAATG  
 ATCCTCTGAGAGAGGAAATAGTCAACTTCAACTGCCGAAACTGGTGGCCACCATGCCTCTCTTTGCTAA  
 CGCGGATCCCAATTTCTGACGGCCATGCTGAGCAAGCTGAGATTTGAGGTGTTCCAGCCCGGAGACTAT  
 ATCATTGAGAAGGAGCTGTGGGAAGAAAAATGATTTTCATCCAGCATGGTGTGGCTGGTGTATCACCA  
 AGTCCAGTAAAGAAATGAAGTTGACAGACGGCTTACTTTGGAGAAATATGCCTGCTGACCAAGGGCCG  
 GCGCACTGCCAGTGTTCGAGCTGATACATACTGTCGCTTACTCCCTTTCGGTGGACAATTTCAACGAG  
 GTCTTGGAGGAATATCCAATGATGAGAAGGCCTTTGAGACAGTTGCTATTGACCGACTAGATCGGATAG  
 GCAAGAAAACTCTATTCTCCTGCAAGATTCCAGAAGGATCTGAACACTGGTGTTTTCAACAACAGGA  
 GAATGAGATCCTGAAGCAGATTGTGAAGCATGACAGAGAGATGGTACAAGCGATCCCTCCAATCAACTAT  
 CCTCAAATGACAGCCCTGAATTGCATCTTCAACCACCACCCCAACGTGCGCATGAGGACCCAATCTC  
 CACCAGTCTACACAGCGACCAGCCTCTCTCACAGCAACCTGCACTCACCCAGCCCGAGCACACAGAGCC  
 TCAACCTCAGCCATCTTTACCCTGCTCCTACACCACAGCAGTCTGCAGTCTCCTATAACAGAGCCCC  
 CTGGCCACGCGAACTTTCCATTAGCCTCTCCACTGCATCCCAATTGCTACTCATGCAGCAGCCTCAGC  
 CGCAGCTACAGCAATCCAGGTACAGCAGACTCAGACTCAGACTCAGCAGCAGCAGCAGCAACAGCAGCC  
 CAGCCCGCAGCCGAGCAGCCGCAACAGCAACAACAGCAGCAACAGCAGCAGCAGCAGCAGCAGCAACAA  
 CAGCAGCAGCAACAGCCACAGACACCTGGTAGTTCCACACCGAAAAATGAAGTGCACAAGAGCACTCAAG  
 CTCTTATAACACCCACCTGACCAGAGAAGTCAGGCCCTCTCTGCCTCGCAGCCTTCGCTGCCCATGA  
 GGTCTCCACTATGATCTCCAGACCGCATCCCACTGTGGGCGAGTCCCTGGCTTCCATCCCTCAACCCGTG  
 GCAACAGTCCACAGCACTGGCTTCAGGCGAGGAGCAGGAGCACCCTGCCACAGCGTGTACCTTGTTC  
 GACAGATGCTCCTCGGAGCCATCCCCCAACCGAGGAGTGCCTCCAGCACCCCGCCACCAGCAGTGT  
 GCAGAGAGAGTCTCCCTCAGTCTAAATAAAGACCCAGATGCAGAAAAACCCGTTTTGCTTCGAATTTA

**ACGCGT**ACGCGGCCGCTCGAGCAGAACTCATCTCAGAAGAGGATCTGGCAGCAATGATATCTGGATT  
 ACAAGGATGACGACGATAAGGTTTAA

**Protein Sequence:** >RR213992 representing NM\_053375  
 Red=Cloning site Green=Tags(s)

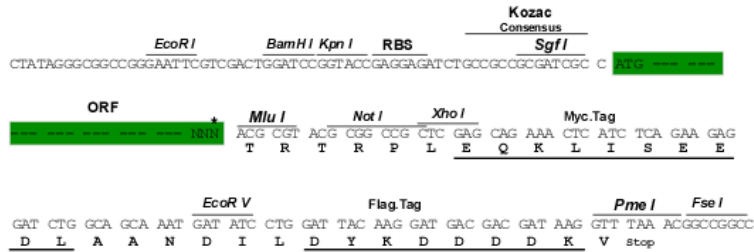
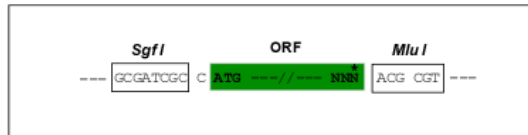
```
MEGGGKPNASNSRDDGNSVYPSKAPATGPAAADKRLGTPPGGGAAGKEHGNSVCFKVDGGGGGEEPAGSF
EDAEGRPRQYGFMRQFTSMLQPGVNKFLRMFGSQKAVEKEQERVKTAGFWIIHPYSDFRFYWDLIMLI
MMVGNLVIIPVGIITFFTEQTTTPWIIFNVASDTVFLLDLIMNFRTGTVNEDSSEIILDPKVIKMNYLKS
FVYDFISSIPVDYIFLIVEKGMDESEVYKTARALRIVRFTKILSLLRLLRLSRLIRYIHQWEEIFHMTYDL
ASAVVRIFNLIGMMLLLCHWDGCLQFLVPLLQDFPPDCWVSLNEMVNDSWGKQYSYALFKAMSHMLCIGY
GAQAPVMSDLWITMLSMIVGATCYAMFVGHATALIQSLDSSRRYQEKYKQVEQYMSFHKLPAQMRQKI
HDYYEHRYPGKIFDEENILSELNDPLREEIVNFNCRKLVATMPLFANADPNFVTAMLKLRFEVFPQGDY
IIREGAVGKKMYFIQHGAVGVIKSSKEMKLTGGSYFGEICLLTKGRRTASVRADTYCRLYSLVDNFNE
VLEEYPMRRAFETVAIDRLDRIGKNSILLQKFQKDLNTGVFNNQENEILKQIVKHDREMVQAIIPPIN
PQMTALNCTSSSTTPTSRMRTQSPVYATSLSHSNLHSPSPSTQTPQPSAILSPCSYTTAVCSPIQSP
LATRTFFHYASPTASQLSLMQQPQLQQSQVQQTQTQTQQQQQQQPQPQPQQPQQQQQQQQQQQQQQ
QQQQQPQTPGSSTPKNEVHKSTQALHNTHLTREVRPLSASQPSLPHEVSTMISRPHTVGESLASIPQPV
ATVHSTGLQAGSRSTVPQRVTLFRQMSSGAIPPNRGVPPAPPPAAVQRESVSNKDPDAEKPRFASNL
```

TRTRPLEQKLISEEDLAANDILDYKDDDDKV

**Restriction Sites:** Sgfl-MluI

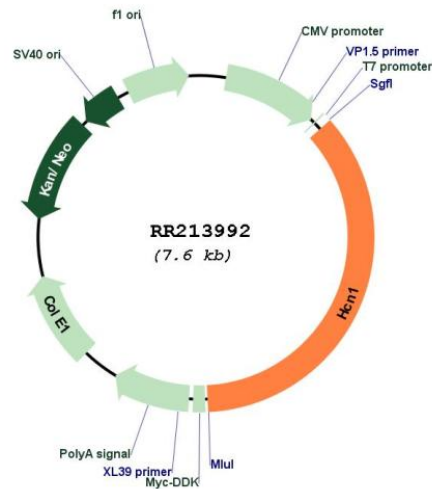
## Cloning Scheme:

Cloning sites used for ORF Shuttling:



\* The last codon before the Stop codon of the ORF

## Plasmid Map:



<b>ACCN:</b>	NM_053375
<b>ORF Size:</b>	2730 bp
<b>OTI Disclaimer:</b>	The molecular sequence of this clone aligns with the gene accession number as a point of reference only. However, individual transcript sequences of the same gene can differ through naturally occurring variations (e.g. polymorphisms), each with its own valid existence. This clone is substantially in agreement with the reference, but a complete review of all prevailing variants is recommended prior to use. <a href="#">More info</a>
<b>OTI Annotation:</b>	This clone was engineered to express the complete ORF with an expression tag. Expression varies depending on the nature of the gene.
<b>Components:</b>	The ORF clone is ion-exchange column purified and shipped in a 2D barcoded Matrix tube containing 10ug of transfection-ready, dried plasmid DNA (reconstitute with 100 ul of water).
<b>Reconstitution Method:</b>	<ol style="list-style-type: none"><li>1. Centrifuge at 5,000xg for 5min.</li><li>2. Carefully open the tube and add 100ul of sterile water to dissolve the DNA.</li><li>3. Close the tube and incubate for 10 minutes at room temperature.</li><li>4. Briefly vortex the tube and then do a quick spin (less than 5000xg) to concentrate the liquid at the bottom.</li><li>5. Store the suspended plasmid at -20°C. The DNA is stable for at least one year from date of shipping when stored at -20°C.</li></ol>
<b>RefSeq:</b>	<a href="#">NM_053375.1</a> , <a href="#">NP_445827.1</a>
<b>RefSeq Size:</b>	2807 bp
<b>RefSeq ORF:</b>	2733 bp
<b>Locus ID:</b>	84390
<b>UniProt ID:</b>	<a href="#">Q9JKB0</a>
<b>Cytogenetics:</b>	2q15
<b>MW:</b>	102.4 kDa
<b>Gene Summary:</b>	may generate neuronal pacemaker activity [RGD, Feb 2006]