

## Product datasheet for **RR213927**

### Wwp2 (NM\_001106184) Rat Tagged ORF Clone

#### Product data:

Product Type:	Expression Plasmids
Product Name:	Wwp2 (NM_001106184) Rat Tagged ORF Clone
Tag:	Myc-DDK
Symbol:	Wwp2
Vector:	pCMV6-Entry (PS100001)
E. coli Selection:	Kanamycin (25 ug/mL)
Cell Selection:	Neomycin



[View online »](#)

**ORF Nucleotide Sequence:**

>RR213927 representing NM\_001106184  
 Red=Cloning site Blue=ORF Green=Tags(s)

TTTTGTAATACGACTCACTATAGGGCGGCCGGGAATTCGTCGACTGGATCCGGTACCGAGGAGATCTGCC  
 GCC**CGCATCGCC**

ATGGCGTCTGCCAGCTCCAGCCGGGGGGTGGCCCTGCCTTTTGAGAAGTCCCAGCTTACTCTGAGAG  
 TGGTGTACAGCAAAGCCCAAGGTGCAACAACGCCAGCCAGAAATCAACTCCTATGTGGAGGTGGCAGTGGA  
 TGGACTCCCCAGTGAGACCAAGAAGACTGGGAAGCGCATCGGGAGCTCTGAGCTTCTCTGGAATGAAGTC  
 ATCGTTCTGAATGTTACAGCCCAGAGTCATTTAGATTTGAAGGTCTGGAGCTGTACATACCTTGAGGAATG  
 AACTACTGGGCACTGCCTCTGTCAACCTCTCCAATGTCCTGAAGAACAATGGCGGCAAAATGGAGAACAC  
 GCAACTGACCCTGAACCTGCAGACAGAGAACAAGGCAGCGTTGTCTCAGGAGGAGAGCTGACAATTTTC  
 CTGGATGGGCCAACTGTTGATCTGGGCAGTGTGCCTAATGGCAGTGCAGTACAGACGGATCACAACCAC  
 CTTCAAGAGAATCCAGTGGGACTGCTTAGCTCCAGAGACCCGGCACCAGCCCCCAGTACAACCTGCTT  
 TGGTGGCAGATCCCGGACGCACAGACATTCAGGTGGCTCAGCCAGGACAGCCACAGCAACTGGCGAACAA  
 AGTCCTGGTGCTAGGAACCGCCACCGCCAACTGTGAAGAACCCAGCAGCAGTGGCTTAGCCAATGGCA  
 CAGTGAGTGAGGAACCTACGACAGCCAGCGATCCTGAAGAAGTGTGCGTTGTTGGTGTGACATCGCCGCC  
 TGCTGCAGCCTCCAGTGTGTCCCAAAATCCCAACACGACATCTCTCCCTGCACCGTCCACACCAGCTGAG  
 GGAGAAGAGCCCAGCACTTCCGGGACACAGCAGCTCCCTGCTGTGCCAGGCCCTGATGCTCTTCCTG  
 CTGGATGGGAACAGAGACAGCTGCCCAATGGGCGTGTCTATTATGTTGATCACAATACCAAGACCACCAC  
 CTGGGAGCGGCCCTTCTCCTCCAGGATGGGAAAAGCGCACAGACCCCGAGGGAGGTTTTACTACGTGGAC  
 CACAACACCCGGACAACCCTGGCAGCGCCGACTGCTGAGTACGTGCGGAACATGAGCAGTGGCAGT  
 CACAGCGGAATCAGCTGCAGGGGCCATGCAGCACTTCAGCCAAAGATTCTCTACCAGTCTTCGATGTC  
 TTCGACTGACCATGATCCCTTGGGCCCCCTCCCGCTGGCTGGGAGAAGAGGCAGGACAATGGCCGGGTG  
 TATTACGTGAACCACAACACACGCACTACCCAATGGGAGGACCCGCGGACGCAGGGAATGATACAGGAGC  
 CAGCCCTGCCCCAGGGTGGGAGATGAAGTACACCAGCGAGGGCGTGCAGTACTTTGTTGATCACAACAC  
 CCGCACTACCACCTTTAAGGATCCTCGCCAGGGTTCGAGTACAGGACAAGCAGGGCTCGCCTGGTGCC  
 TATGAGCGAAGTTTCCGGTGGAAAGTACACCAGTTCGCTTCTCTGCCACTCAAATGCCCTACCCAGCC  
 ACGTGAAGATCAGCGTTTCCAGGCAGACTCTTTGAGGATTCTTTCAACAGATTATGAACATGAAACC  
 TTACGACCTGCGCCGCCGCTCTACATCATCATGCGTGGTGGAGGGCCTGGACTACGGCGGCATCGCC  
 AGAGAGTGGTTTTCTCCTGTCCCATGAGGTGCTCAACCCTATGTACTGTTTGTGATGCTGGGA  
 AGAACAATTACTGCCTGCAGATCAACCCGGCCTTCCATCAACCCTGACCACCTCACCTACTTCCGCTT  
 TATCGGCAGATTCATCGCCATGGCTCTGTACCATGGAAAGTTCATCGACACAGGCTTACCCCTCCCTTTC  
 TACAAGCGGATGCTCAACAAGAGACCAACTCTCAGGGACCTGGAGTCTATTGACCCTGAGTTTTACAAC  
 CCATTATCTGGATCAAAGAGAACAACCTGGATGAGTGTGGCCTGGAGCTGTTCTTCATCCAGGACATGGA  
 GATCCTGGGCAAGGTGACAACCCATGAAGTGAAGGAAGCGGAGAGAACATCCGAGTACTGAGGAGAAC  
 AAGGAGGAGTATATCATGCTGCTGACTGACTGGCGATTACCCGAGGTGTGAAGAGCAGACCAAGCCT  
 TCCTGGATGGCTTCAATGAGGTGGCCCTCTGGAGTGGTTGAGATATTTGATGAAAAAGAGCTGGAGCT  
 CATGCTGTGTGGCATGCAGGAGATTGACATGAGTGAAGTGGCAGAGAAGACGCCATCTATCGGCACTACACC  
 AAGAGCAGCAAGCAGATCCAGTGGTTCTGGCAGGTTGTGAAGGAGATGGACAATGAGAAGAGGATCCGGC  
 TACTGCAGTTTGTACGGGAACCTGCCCGCTGCCTGTTGGGGGCTTTGCTGAGCTCATTGGGAGCAATGG  
 ACCCCAGAAGTTCTGCATTGACAGAGTTGGCAAGGAAACCTGGCTGCCTAGGAGCCATACATGCTTCAAC  
 CGCCTGGATCTGCCTCCCTACAAGAGCTACGAGCAGCTGAAAGAGAAGCTGCTGTATGCCATCGAGGAGA  
 CTGAGGGTTTTGGACAGGAG

**ACGCGT**ACGCGGCCGCTCGAGCAGAACTCATCTCAGAAGAGGATCTGGCAGCAATGATATCCTGGATT  
 ACAAGGATGACGACGATAAGGTTTAA

**Protein Sequence:** >RR213927 representing NM\_001106184  
Red=Cloning site Green=Tags(s)

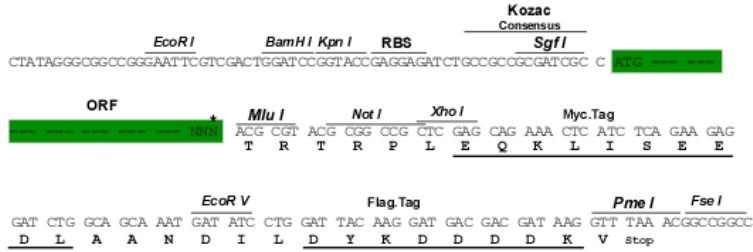
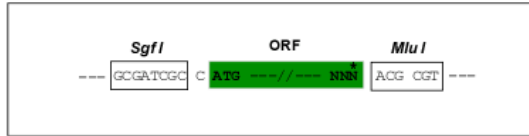
MASASSSRAGVALPFEKSQLTLRVVSAKPKVHNRQPRINSYVEVAVDGLPSETKKTGKRIGSSELLWNEV  
IVLNVTAQSHLDLKVWSCHTLRNELLGTASVNL SNVLKNNGGKMENTQLTLNLQ TENKGSVVSGGELTIF  
LDGPTVDLGSVPNGSAVTDGSQPPSRESSGTALAPETRHQPPSTNCFGGRSRTHRHSGGSARTATATGEQ  
SPGARNRHRQPVKNPSSSGLANGTVSEEPPTASDPEELSVVGVTSPPPAAASSVSPNPNTTSLPAPSTPAE  
GEEPSTSGTQQLPAAAQAPDALPAGWEQRQLPNGRVYYVDHNTKTTTWERPLPPGWEKRTDPRGRFYVD  
HNTRTTTWRPTAEYVRNYEQWQSQRNQLQGAMQHFSQRFLYQSSSASTDHDPLGPLPPGWEKRQDNGRV  
YYVNHNRTRTTQWEDPRTQGMIEPALPPGWEMKYTSEGVRYFVDHNRTRTTFKDPRPGFESGKQGSPGA  
YERSFRWKYHQFRFLCHSNALPSHVKISVSRQTLFEDSFQQIMNMKPYDLRRRLYIIMRGEGLDYGGIA  
REWFFLLSHEVLNPMYCLFEYAGKNNYCLQINPASSINPDHLTYFRFIGRFIAMALYHGKFIDTGF TLPF  
YKRMLNKRPTLRDLESIDPEFYNSIIWIKENNLDECGLLEFFIQDMEILGKVTTHELKEGGENIRVTEEN  
KEEYIMLLTDWRFTRGVEEQTKAFLDGFNEVAPLEWLR YFDEKELEMLCGMQEIDMSDWQKNAIYRHYT  
KSSKQIQFWQVVKEMDNEKRIRLLQFVTGTCRLPVGGFAELIGSNGPQKFCIDRVGKETWLP RSHTCFN  
RLDLPPYKSYEQLKEKLLYAIEETEGFGQE

TRTRPLEQKLI SEEDLAANDILDYKDDDDKV

**Restriction Sites:** Sgfl-MluI

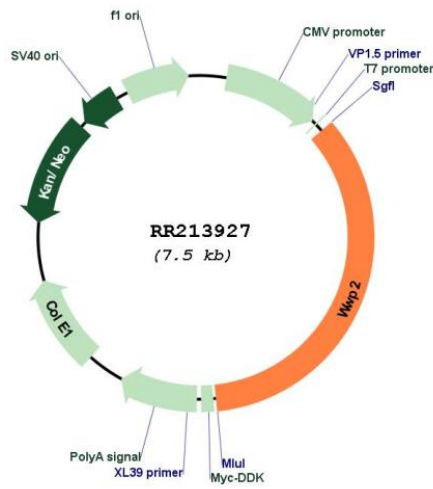
Cloning Scheme:

Cloning sites used for ORF Shuttling:



\* The last codon before the Stop codon of the ORF

Plasmid Map:



<b>ACCN:</b>	NM_001106184
<b>ORF Size:</b>	2610 bp
<b>OTI Disclaimer:</b>	The molecular sequence of this clone aligns with the gene accession number as a point of reference only. However, individual transcript sequences of the same gene can differ through naturally occurring variations (e.g. polymorphisms), each with its own valid existence. This clone is substantially in agreement with the reference, but a complete review of all prevailing variants is recommended prior to use. <a href="#">More info</a>
<b>OTI Annotation:</b>	This clone was engineered to express the complete ORF with an expression tag. Expression varies depending on the nature of the gene.
<b>Components:</b>	The ORF clone is ion-exchange column purified and shipped in a 2D barcoded Matrix tube containing 10ug of transfection-ready, dried plasmid DNA (reconstitute with 100 ul of water).
<b>Reconstitution Method:</b>	<ol style="list-style-type: none"><li>1. Centrifuge at 5,000xg for 5min.</li><li>2. Carefully open the tube and add 100ul of sterile water to dissolve the DNA.</li><li>3. Close the tube and incubate for 10 minutes at room temperature.</li><li>4. Briefly vortex the tube and then do a quick spin (less than 5000xg) to concentrate the liquid at the bottom.</li><li>5. Store the suspended plasmid at -20°C. The DNA is stable for at least one year from date of shipping when stored at -20°C.</li></ol>
<b>RefSeq:</b>	<a href="#">NM_001106184.1</a> , <a href="#">NP_001099654.1</a>
<b>RefSeq Size:</b>	2907 bp
<b>RefSeq ORF:</b>	2613 bp
<b>Locus ID:</b>	291999
<b>Cytogenetics:</b>	19q12
<b>MW:</b>	98.8 kDa