

## Product datasheet for **RR213912**

### **Bsdc1 (NM\_001106636) Rat Tagged ORF Clone**

#### **Product data:**

Product Type:	Expression Plasmids
Product Name:	Bsdc1 (NM_001106636) Rat Tagged ORF Clone
Tag:	Myc-DDK
Symbol:	Bsdc1
Synonyms:	RGD1311622
Mammalian Cell Selection:	Neomycin
Vector:	pCMV6-Entry (PS100001)
E. coli Selection:	Kanamycin (25 ug/mL)



[View online »](#)

**ORF Nucleotide Sequence:**

>RR213912 representing NM\_001106636  
 Red=Cloning site Blue=ORF Green=Tags(s)

TTTTGTAATACGACTCACTATAGGGCGGCCGGAATTCGTCGACTGGATCCGGTACCGAGGAGATCTGCC  
 GCC**GCGATCGCC**

ATGGCGGAAGGGGAGGACGTGGGGTGGTGGCGGAGCTGGCTGCAGCAGAGCTACCAGGCAGTCAAAGAGA  
 AGTCCACTGAAGCTTTGGAGTTCATGAAGCGCGACCTGACAGAGTTTACCAGGTGGTACAGCATGACAC  
 GCCTGCACCATAGCAGCCACGGCCAGTGTGGTGAAGGAGAGGCTGGCCACTGAAGGCTCCTCGGGAGCA  
 ACAGAAAAAGTGAAGAAGGGATTATCCGACTTCTTAGGGGTGATCTCAGATACCTTTGCCCTCTCCAG  
 ACAAACCATCGACTGCGATGTCATCACCTGATGGGTACACCCTCTGGCACAGCTGAGCCATATGATGG  
 CACCAAGGCTCGGCTCTACAGTCTGCAGTCAGACCCGGCAACATACTGCAACGAGCCGACGGGCCCCCG  
 GAATTGTTTATGCTGGCTTTCCCGATTCTGCTTGGAGGAGAAGAAAGGGGAGATCTCAGAGCTCCTTG  
 TAGGCAGCCCTCCATTCGAGCCCTCTACACCAAGATGGTTCAGCAGCTGTTTCCATTGAGAATTCTG  
 GCATCGGTATTTCTATAAAGTCCACCAACTTGAACAGGAGCAGGCCCGGAGGGATGCACTGAAGCAGCGG  
 GCAGACCAGAGCATCTCTGAAGAGCCTGGCTGGGAGGAGGAAGAAGAGGAGCTTGAACGCATTGTACCAT  
 CTCCAAAAGAGGCAAAGCTTCCACAAGAGACTAAAACCTTCTACAGCCCTGAAAAAGAGCCAGCCCCCA  
 GAGCCCTTGTGAAGAGATTCCAGTGGAGGCCCTGCAGAGGCTACCCCATCAGAGAGCAGTGAAGCAGT  
 TCCCTCGCCACACAGATCGCAAACCCAGCAGCTGCACCTCAGCCACCAGAGCTACCTAAAGACCTGTCCC  
 AAAAGTCTCGAGGCGCTTTTGAAGAACAGAGTCTGGCTGAGGATGCGGGTAAAAGTGGACCCCAACC  
 CCCCCTTACCTCAAGCCTTAACCCCTGCAGGCCGAGCCAGTGGCTAGAACCAGGCCCTCCAGCCAGA  
 GTAGAGACCCTGAGAGAAGAGGTGCCACAGACTTAAGAGTGTGAGCTGAACTCAGACAGTGGGAAGT  
 CAACACCCTCAAACAATGGCAAGAAAGGCTCAAGCACGGACATCAGCGAGGACTGGGAGAAGGACTTTGA  
 CTGGACATGACTGAAGAAGAAGTGCAGATGGCACTTTCCAAGGTGGAAGCCTCTGGGAGCTTGAAGAT  
 GTAGAGTGGGAGGACTGGGAA

**ACGCGT**ACGCGGCCGCTCGAGCAGAAACTCATCTCAGAAGAGGATCTGGCAGCAAATGATATCCTGGATT  
 ACAAGGATGACGACGATAAGGTTTAA

**Protein Sequence:**

>RR213912 representing NM\_001106636  
 Red=Cloning site Green=Tags(s)

MAEGEDVGWRSWLQQSYQAVKEKSTEALEFMKRDLTEFTQVVQHDTACTIAATASVVKERLATEGSSGA  
 TEKVKKGLSDFLGVISDTFAPSPDKTIDCDVITLMGTPSGTAEPYDGTKARLYSLQSDPATYCNEPDGPP  
 ELFDLAWL SRFCL EKKGEISELLV GSPSIRALYTKM VPAVSHSEFWHR YFYKVHQL EQEQARRDALKQR  
 ADQSI SEEPGW EEEEEELERIVSPK EAKLPQETKTSTAPENEPAPQSPCEEIPVEAPAEATPSESSESI  
 SLATQIANPAAAPQPPEL PKDLSQKLL EASLEEQSLAEDAGETGPPPPVT SKPLTPAGRASGLEPRPPAR  
 VETLREEVPTDLRVFELNSDSGKSTPSNNGKGSSTDIS EDWEKDFDLDMTEEEVQMALSKVEASGELED  
 VEWEDWE

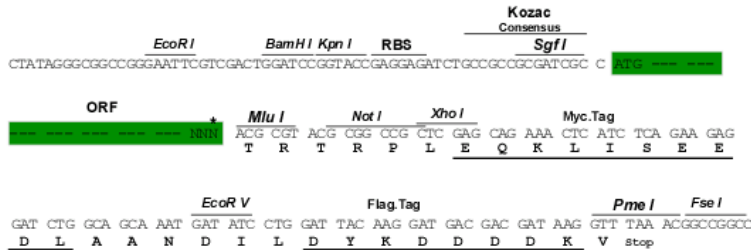
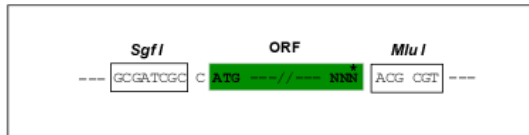
**TR**TRPLEQKLISEEDLAANDILDYKDDDDKV

**Restriction Sites:**

Sgfl-MluI

**Cloning Scheme:**

Cloning sites used for ORF Shutting:



\* The last codon before the Stop codon of the ORF

**ACCN:** NM\_001106636

**ORF Size:** 1281 bp

**OTI Disclaimer:** The molecular sequence of this clone aligns with the gene accession number as a point of reference only. However, individual transcript sequences of the same gene can differ through naturally occurring variations (e.g. polymorphisms), each with its own valid existence. This clone is substantially in agreement with the reference, but a complete review of all prevailing variants is recommended prior to use. [More info](#)

**OTI Annotation:** This clone was engineered to express the complete ORF with an expression tag. Expression varies depending on the nature of the gene.

**Components:** The ORF clone is ion-exchange column purified and shipped in a 2D barcoded Matrix tube containing 10ug of transfection-ready, dried plasmid DNA (reconstitute with 100 ul of water).

- Reconstitution Method:**
1. Centrifuge at 5,000xg for 5min.
  2. Carefully open the tube and add 100ul of sterile water to dissolve the DNA.
  3. Close the tube and incubate for 10 minutes at room temperature.
  4. Briefly vortex the tube and then do a quick spin (less than 5000xg) to concentrate the liquid at the bottom.
  5. Store the suspended plasmid at -20°C. The DNA is stable for at least one year from date of shipping when stored at -20°C.

**RefSeq:** [NM\\_001106636.1](#), [NP\\_001100106.1](#)

**RefSeq Size:** 2687 bp

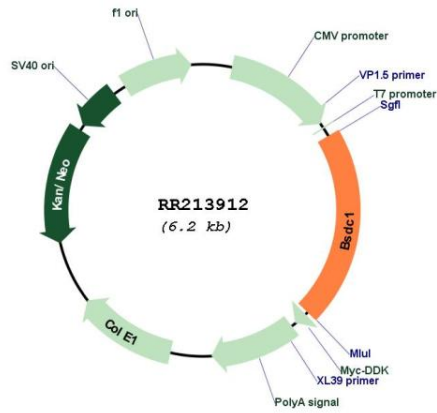
**RefSeq ORF:** 1284 bp

**Locus ID:** 297890

**Cytogenetics:** 5q36

**MW:** 47 kDa

Product images:



Circular map for RR213912