

Product datasheet for **RR213890**

Acsm3 (NM_033231) Rat Tagged ORF Clone

Product data:

Product Type:	Expression Plasmids
Product Name:	Acsm3 (NM_033231) Rat Tagged ORF Clone
Tag:	Myc-DDK
Symbol:	Acsm3
Synonyms:	Sa; Sah
Vector:	pCMV6-Entry (PS100001)
E. coli Selection:	Kanamycin (25 ug/mL)
Cell Selection:	Neomycin



[View online »](#)

ORF Nucleotide Sequence:

>RR213890 representing NM_033231
 Red=Cloning site Blue=ORF Green=Tags(s)

TTTTGTAATACGACTCACTATAGGGCGGCCGGGAATTCGTCGACTGGATCCGGTACCGAGGAGATCTGCC
 GCC**CGCATCGCC**

ATGGCAATGTTACTTCGTGCTAGGTGTTTTACCCGCCTAGCAATCCCTGATCCCAGGAGAATCTTGATA
 AAGATTACAGAACAGCGATTCTCAGAACTTTTCCAACATGAGTCCATGAAACATGACTTCAAAATAGA
 GATTCCAGAGTATTTCAATTTTGCAAAAAGATGTTTTGGACCAATGGACCAATACGAAAAAGACTGGAAAA
 AGACTTTCCAATCCAGCCTTCTGGTGGGTAGATGGAAATGGAAAGGAGGTGAGATGGAGTTTTGAAGAAC
 TTGGGTCTTTATCCAGGAAATTTGCCAACATACTCACAGAAGCCTGTTCCCTGCAAAGAGGAGATAGAGT
 AATGGTGATTCTGCCAAGATCCAGAGTGGTGGCTTCCAATGTAGCCTGTCTGCGAACAGGGACAGTT
 TTAATCCAGGAACCACTCAGCTGACCCAGAAAGACATCTCTACAGGCTACAATCTTCAAATCAAAGT
 GCATTATTACTGATGATACTTTGGCCCCAGCAGTAGATATTGTAGCAGCTAAATGTGAAATCTCCACTC
 CAAATTAATTGTGTCTCAGCACTCCAGAGAAGGCTGGGGGAACCTCAAGGAGATGATGAAATATGCCAGT
 GACAGCCACACCTGTGTGGACACAAAACACAATGAGTTGATGGCCATCTACTTCACCAGTGGGACGACTG
 GGCTCCGAAGATGATTGGACACACCCACAGCAGTTTTGGTTTAGGACTGTCTGTCAACGGAAGGTTCTG
 GCTGGATTTGATAGCCTCTGACGTGATGTGGAATACGTACAGTACAGGCTGGGCAAAGTCTGCATGGAGT
 AGTGTTTTTTCTCCGTGGACCCAAGGAGCATGTGTGTTTGCACACTATTTGCCCGTTTTGATCAACTT
 CCATCTTGCAAACCTCTCCAAGTTCCCATCACTGTCTTCTGTTCTGCACCAACTGCCTACCGGATGCT
 TATACAGAATGACATAACCAGCTATAAGTTCAACAGTTTGAAGCACTGTGTGAGTGCCGGGAACCCATC
 AACCTGAAGTGATGGAACAATGGAAAAAGAAGACAGGACTAGACATCTACGAAGGATATGGACAGACAG
 AAACGGTGCTGATCTGTGGAATTTCAAGGGGATGAAAATTAAGCCTGGCTCAATGGGGAAGCCCTCTCC
 TGCTTTTAATGTGGAGATTTTAGATGAAAATGGCACTATTCTTCTCCTGGACAAGAAGGGGATATTGCT
 GTTCAAGTTCTTCTGATCGACATTTGGCCTTTTTACTCATTATGTAGATAATCCTTCGAAAAACAGCTT
 CAACTCTACGAGGGAATTTCTACATCACTGGGGACAGAGGCTATATGGATGAGGATGGCTATTTCTGGTT
 TGTTGCAAGATCAGACGATGTCATATTATCCTCTGGTTACCGAATTGGACCATTGAGGTAGAGAGTGCT
 CTCATAGAGCATCCTTCCATTGCAGAGTCACTGTTGTCAGCAGCCCTGACCCCATCAGAGGAGAGGTAG
 TAAAGGCCTTTATTGCTCAAATCCTGATTACAACTCCATGATCAAGAACAAGTAAAAAGAGATTCA
 GGAGCATGTGAAAAAGACTACAGCACCTTACAAATACCCAGGAAGATAGAATTTATTGAGGAGCTGCCA
 AAGACTGTCAGTGGGAAGGTCAAAGAAATGAACTGAGGAGAAAGGAATGGACAACAAT

ACGCGTACGCGGCCGCTCGAGCAGAAACTCATCTCAGAAGAGGATCTGGCAGCAAATGATATCCTGGATT
 ACAAGGATGACGACGATAAGGTTTAA

Protein Sequence:

>RR213890 representing NM_033231
 Red=Cloning site Green=Tags(s)

MAMLLRRCFHRLAIPDPRRILYKDYRTAIPQNF SNYESMKHDFKIEIPEYFNFAKDVLQWNTTEKTKG
 RLSNPAFWVVDGNGKEVRWSFEELGSLSRKFANILTEACSLQRGDRVMVILPKIPEWWLANVACLRGTGTV
 LIPGTTQLTQKDILYRLQSSKSKCIITDDTLAPAVDIVAAKCNLHSLKIVSQHSREGWGNLKEMMKYAS
 DSHTCVDTKHNELMAIYFTSGTTGPPKMI GHTHSFGLGLSVNGRFWLDLIASDVMWNTSDTGWAKSAWS
 SVFSPWTQGACVFAHYLPRFDSTILQTL SKFPITVFCSAPTAYRMLIQNDITSYKFNSLKHCVSAGEPI
 NPEVMEQWKKKTGLDIYEGYQTETVLICGNFKGMKIKPGSMGKPSAFNVEILDENGTLPPGQEGDIA
 VQVLPDRPFGLFTHYVDNPSKTA STRLGNFYITGDRGYMEDGYFWFVARSDDVILSSGYRIGPFEVESA
 LIEHPSIAESAVVSSPDIRGEVVKAFIVLNPDKLHDQEQ LKKEIQEHVKTTAPYKYPRKIEFIEELP
 KTVSGKVKRNELRRKEWTTT

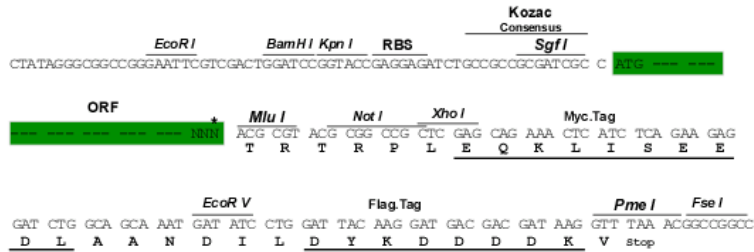
TRTRPLEQKLISEEDLAANDILDYKDDDDKV

Restriction Sites:

Sgfl-MluI

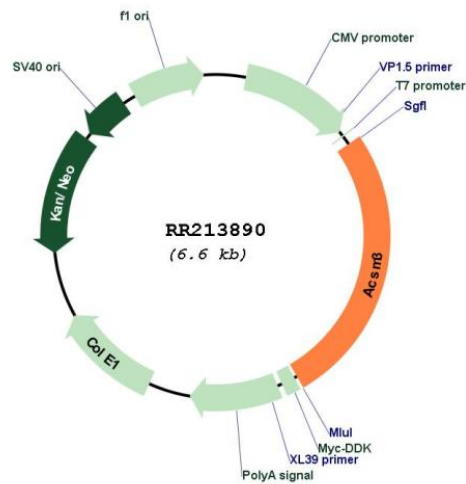
Cloning Scheme:

Cloning sites used for ORF Shutting:



* The last codon before the Stop codon of the ORF

Plasmid Map:



ACCN: NM_033231
 ORF Size: 1740 bp

OTI Disclaimer:	The molecular sequence of this clone aligns with the gene accession number as a point of reference only. However, individual transcript sequences of the same gene can differ through naturally occurring variations (e.g. polymorphisms), each with its own valid existence. This clone is substantially in agreement with the reference, but a complete review of all prevailing variants is recommended prior to use. More info
OTI Annotation:	This clone was engineered to express the complete ORF with an expression tag. Expression varies depending on the nature of the gene.
Components:	The ORF clone is ion-exchange column purified and shipped in a 2D barcoded Matrix tube containing 10ug of transfection-ready, dried plasmid DNA (reconstitute with 100 ul of water).
Reconstitution Method:	<ol style="list-style-type: none">1. Centrifuge at 5,000xg for 5min.2. Carefully open the tube and add 100ul of sterile water to dissolve the DNA.3. Close the tube and incubate for 10 minutes at room temperature.4. Briefly vortex the tube and then do a quick spin (less than 5000xg) to concentrate the liquid at the bottom.5. Store the suspended plasmid at -20°C. The DNA is stable for at least one year from date of shipping when stored at -20°C.
RefSeq:	NM_033231.1 , NP_150234.1
RefSeq Size:	2585 bp
RefSeq ORF:	1743 bp
Locus ID:	24763
UniProt ID:	Q6SKG1
Cytogenetics:	1q35
MW:	65.7 kDa
Gene Summary:	may be a component of genetic hypertension [RGD, Feb 2006]