

Product datasheet for **RR213810**

Zfp281 (NM_001012030) Rat Tagged ORF Clone

Product data:

Product Type:	Expression Plasmids
Product Name:	Zfp281 (NM_001012030) Rat Tagged ORF Clone
Tag:	Myc-DDK
Symbol:	Zfp281
Vector:	pCMV6-Entry (PS100001)
E. coli Selection:	Kanamycin (25 ug/mL)
Cell Selection:	Neomycin



[View online »](#)

ORF Nucleotide Sequence:

>RR213810 representing NM_001012030
 Red=Cloning site Blue=ORF Green=Tags(s)

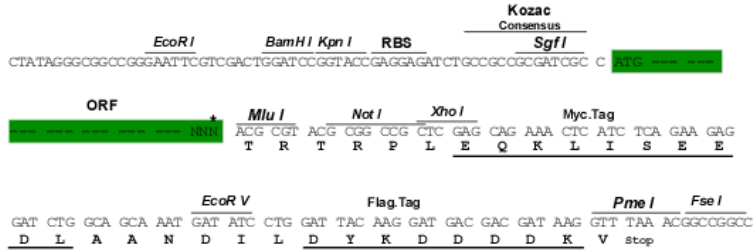
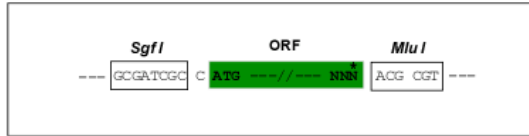
TTTTGTAATACGACTCACTATAGGGCGGCCGGGAATTCGTCGACTGGATCCGGTACCGAGGAGATCTGCC
 GCC**CGGATCGCC**

ATGAAAATCGGCAGCGGGTTCCTCAGCGCGCGCGGGTCCCGGCAGTAGCGGTGGTAGCGGCTCCAGCG
 GCAGCTCCGGCAGCGCGCGCAGCAGGAGAGCTGAGATGGAGCCACCTTCCCCCAGAGTATGGTTATGTT
 CAACCACCGGCTCCCCCGGTACCAGCTTACCACCGCCTGCGGGGACGGCCGCCCTCCCCCGAGTGC
 GTGTTATCCTCCTACCTCCGAGCCCGGCCGTGAGCCCCCCTCCACCAGCCCCGGACATGACTT
 TCAAGAAGGAGCCGGCGGTGACCGCGGCTTCCCTTCGCAGAGGACCTCCTGGGGATTCTTGACGTC
 CTTGGTGAGCATCAAGCAGGAGAAACCTGCGGATCCTGAGGAGCAGCAGTCCCACCACCATCATCCACC
 CACCACATGGGGGGCTGTTGCTGGGGCTGAAGAGAGATCACCAGGCCTAGGAGGAGGGGAAGGGGGGA
 GCCACGGCGTCATCAAGACCTCAGTATTCTCCACCAGCATGTCCAGCAGCAACCAGCCCAGCATACCCG
 CGATGTATTACTGAGCAGCAGCGGTAGCAGGACTGATGACCATGGCAACGAGGAGCCAAAGCAGGACACT
 AACGTCAAAAAGGCAAAGAGGCCAAAGCCAGAATCTCAGGAATCAAAGCCAAGGAGAAGCCAAGTGCAT
 CTTCCAAACCTTTGGTTGGAGAGGGAGAAGGTGCCGTCCTGTCCCAAGTCAGAAACCTCATATCTGTGA
 TCACTGTAGTGCTGCTTTCAGGAGCTCCTACCCTGCGGAGACATGTCCTCATTACACAGGAGAAAGG
 CCGTTCAGTGCAGCCAGTGTAGTATGGGTTTCATTGAGAAATACCTACTGCAGAGACACGAGAAATTC
 ACAGCAGAGAGAAGCCCTTTGGGTGCGATCAGTGCAGCATGAAGTTTATTCAGAAGTACCATATGGAGAG
 ACACAAGAGGACACATAGTGGAGAAAAGCCATAAAGTGTGACACTTGCCAACAGTATTTTTCAAGGACT
 GACAGATTGTTGAAGCACAGGCGCACGTGTGGTGAAGCCATAGCAAAAGGGCGGCTAGTGCAGAACCTG
 GTCATCAAACCATATAATATGGTAATCTGGCTGTGTTGCTCAGGAAATACAAGTTCTCACGGAG
 AAAATCGAAGTCAAAAAGCATAGCTGTTGAAAATAAGGAACACAAGACTGGCAAAAACAAACGAATCACAG
 ATGTCAAACAATATAACATGCAGAGTTACTCAGTAGAAATGCCTACTGTGTCCACCAGTGGCGGCATCA
 TCGGCACGGGGCTCGATGAGCTACAGAAAAGGGTGCCAAAACCTGATCTTTAAGAAAGGAAGCAGAAAAGAA
 TACAGATAAAAGCTACCTTAATTTGTGTACCCTTACCAGATGTAGCTGGGCAGAAATCCTTGTCTGGT
 AAACCAAGTGGCTCGCTTGGCATCGATCGAACAATAGCGTGGAGACCATTAGTCTTCTCCAAAGTGCAA
 GCGGCAAACCAGGCCGATAAGTAGTAATTATGATGATGCCATGCAGTTCTCAAAGAAGAGAAGATACTT
 ACCAACTGCCAGCAGCAACAGTGCCTTTCTATCAATGTAGGACACATGGTCTCCAGCAGTCAGTCATT
 CAGTCTGCAGGGTCACTGTTTTGGACAATGAGGCGCCATTGTCACTTATTGACTCCTCAGCTCTAAATG
 CTGAAATTAAGTCTGTACGACAAGTCTGGAATTCCTGATGAGGTTCTACAAAGTATTTGGATCAGTA
 CTCTAGCAAGTCAGAACCACAGAAGGAGGATCCCTTCACTTAACAGAACCACGAGTGGATTTACACACC
 TCAGGAGAACACTCTGAATTTGGTTCAAGAAGAGCATTGAGCCAGGCACCCAGACACCTTCAAATGACA
 AAGCAAGCGTGTGACAGGACTCCAAATACCTCCAGCAGGCTTTTGAGAAGTCCACGAATGCAGGTTT
 TACCCTCGGACATGGTTTCCAGTTTGTGACGTTATCTTCACTCTCCACAACCACACTTTGTTTCCAGAA
 AAACAGATATACTACTACATCTCCTTTGGAGTGTGGTTTGGCCAATCTGTTACCTCAGTGTGCCATCTT
 CATTGCCAAAGCCTCCTTTTGGGATGTTGTTGGATCTCAACCAGGCTTTATTTATCTGCTTTGGATGC
 TACACATCAGCAGTTGACACCTTCCAGGAGCTGGATGATCTGATAGATTCTCAGAAAGAACTTAGAGACA
 TCATCAGCCTTCCAGTCCATCTCAGAAATTGACTAGCCAGAAGGAACAACAGAAAAATTTAGAGTCTT
 CAACAAGCTTTAGATTCCATCTCAGGAGTTAGCTAGCCAGATTGATCCTCAGAAAGACATAGAGCCTAG
 AACACGTACCAGATTGAGAACTTTGCACAAGCATTGCGTTTCTCAGTTTAAAGTCGGGCAGCAGGGTGCCA
 ATGACCTTTATCACTAATCTAATGGAGAAGTGGACCATAGAGTAAGGACTTCAGTGTGAGATTTCTCAG
 GGTATACAAATATGATGTCTGATGTAAGTGAAGGATGATGATGATGATGATGATGATGATGATGATGATGAT
 TTACAGG

ACGCGTACGCGGCGGCTCGAGCAGAAACTCATCTCAGAAGAGGATCTGGCAGCAATGATATCCTGGATT
 ACAAGGATGACGACGATAAGGTTTAA

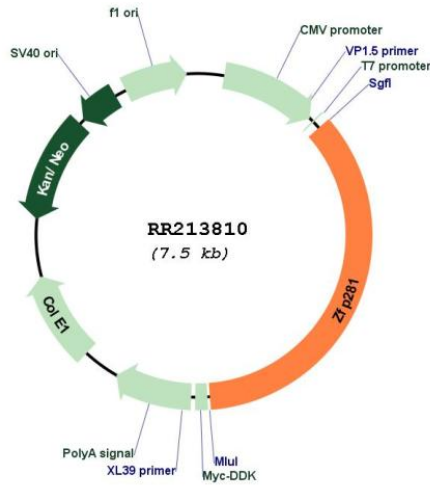
Cloning Scheme:

Cloning sites used for ORF Shuttling:



* The last codon before the Stop codon of the ORF

Plasmid Map:



ACCN:	NM_001012030
ORF Size:	2667 bp
OTI Disclaimer:	The molecular sequence of this clone aligns with the gene accession number as a point of reference only. However, individual transcript sequences of the same gene can differ through naturally occurring variations (e.g. polymorphisms), each with its own valid existence. This clone is substantially in agreement with the reference, but a complete review of all prevailing variants is recommended prior to use. More info
OTI Annotation:	This clone was engineered to express the complete ORF with an expression tag. Expression varies depending on the nature of the gene.
Components:	The ORF clone is ion-exchange column purified and shipped in a 2D barcoded Matrix tube containing 10ug of transfection-ready, dried plasmid DNA (reconstitute with 100 ul of water).
Reconstitution Method:	<ol style="list-style-type: none">1. Centrifuge at 5,000xg for 5min.2. Carefully open the tube and add 100ul of sterile water to dissolve the DNA.3. Close the tube and incubate for 10 minutes at room temperature.4. Briefly vortex the tube and then do a quick spin (less than 5000xg) to concentrate the liquid at the bottom.5. Store the suspended plasmid at -20°C. The DNA is stable for at least one year from date of shipping when stored at -20°C.
RefSeq:	NM_001012030.1 , NP_001012030.1
RefSeq Size:	3114 bp
RefSeq ORF:	2670 bp
Locus ID:	305083
Cytogenetics:	13q13
MW:	96.5 kDa