

Product datasheet for **RR213802**

Apbb1 (NM_080478) Rat Tagged ORF Clone

Product data:

Product Type:	Expression Plasmids
Product Name:	Apbb1 (NM_080478) Rat Tagged ORF Clone
Tag:	Myc-DDK
Symbol:	Apbb1
Synonyms:	FE65
Mammalian Cell Selection:	Neomycin
Vector:	pCMV6-Entry (PS100001)
E. coli Selection:	Kanamycin (25 ug/mL)



[View online »](#)

ORF Nucleotide
Sequence:

>RR213802 representing NM_080478
 Red=Cloning site Blue=ORF Green=Tags(s)

TTTTGTAATACGACTCACTATAGGGCGGCCGGGAATTCGTCGACTGGATCCGGTACCGAGGAGATCTGCC
 GCCGCGATCGCC

ATGTCTGTTCATCATCCCTGAGCCAGTCGGCCATTAATGCTAACAGCCACGGAGGCCCTGCACTCAGCT
 TCCCTTCCCCTTGCATGCTGCCATAACCAGCTGCTCAACGCCAAGCTGCAAGCCACAGCTGTGGTACC
 CAAGGACCTTCGAAGTGCCATGGGAGAGGGTAGTGTGCCTGAACCAAGCCCTGCCAATGCCAAGTGGTTA
 AAGGAAGGCCAGAACCAGCTTCGGAGGGCTGCCACAGCCATCGAGACCAGAACCAGAAATGTGACCTTGA
 CCTTGGCGGAGGAGGCCAGCCAGGAGGCTGAGACAGCACCTTTGGGTCCCAAAGGCTTAATGCATCTATA
 CTCTGAGCTGGAGCTCTCGGCCACAATGCAGCCAACCGAGGGCTTCATGGATCCGCCTTGATCATCAAC
 ACCCAGGACTGGGACCAGATGAAGGAGAGGAGAAGGCAGCAGGAGAAGTTGAGGAGGAGGATGAAGATG
 AGGAGGAAGAGGATGAGGAGGAGGAGGACTTGTCTTCTCCTCAAGGGCTACCTGAGCCTCTGGAGAATGT
 GGAAGTCCCCTCTGGACCCAGGTCCTCACAGATGGCCCCGGGAACATAGCAAGAGTGCTAGCCTCCTA
 TTTGGCATGCGAAACAGTGCAGCCAGTGACGAGGACTCAAGCTGGGCCACCTTATCGCAGGGCAGCCCT
 CCTATGGCTCTCCGGAGGACACAGATTCCTTCTGGAACCCCAACGCTTTCGAGACGGATTCCGATCTACC
 GGCTGGATGGATGAGGGTCCAAGACACCTCAGGGACCTACTACTGGCACATCCCAACAGGGACCACCCAG
 TGGGAACCCCAAGGCCGGCCCTCCCATCACAGGGGAACAGTCCCAAGAAGAGTCCCAGCTCACCTGGA
 CTGGCTTTGCTCACCAAGAAGGCTTTGAGGAAGGAGAGTTTTGGAAGGATGAACCTAGTGAAGAGGCCCC
 AATGGAGTTGGGACTGAAGGACCTGAGGAGGGACATGGCCCTTCTCAGCTCAGAGCCTCAGCCCAGAG
 CCAGTCCCAAGGAGGAGAGAATCTGCCCAACGGAACGCCAATCCAGGGATCAAGTGTTCGCTGTGC
 GCTCCCTAGGCTGGGTAGAGATGACTGAGGAGGAGCTGGCCCCAGGACGCAGCAGTGTGGCAGTCAACAA
 TTGTATCCGCCAGCTCTCCTACCACAAAAACAATCTACATGATCCGATGTCTGGAGGCTGGGGAGAGGGA
 AAGGATCTGCTGCTCCAGCTGGAGGATGAGACGCTAAAAGTTGGTGGAGCCACAGAACCAGACACTGCTGC
 ATGCCAGCCATCGTCAGCATTGCGTGTGGGGCTGGGGCGGACAGTGAAGAGAGAGGGACTTTGC
 CTACGTAGCTCGAGATAAGCTGACCCAGATGCTCAAGTCCACGTGTTTCGCTGTGAGGCACCTGCCAAG
 AACATCGCCACCAGCCTGCATGAGATCTGCTCCAAGATCATGTCTGAACGGCGCAATGCTCGCTGCTTGG
 TAAATGGACTCTCCCTGGACCACTCTAACTTGTGGATGTCCCTTCCAAGTGAATTCCCAGCACCAAA
 GAATGAAGTGGTGCAGAAGTTTCAAGTCTATTACCTAGGGAACGTGCCTGTGGCTAAACCCGTTGGGGTA
 GATGTGATTAATGGAGCCCTGGAGTCAGTCTGTCTTCCAGTAGTCGTGAGCAGTGGACCCCAAGTCAG
 TCAGCGTGGCCCCGTCACCCCTACCATCTTGACCAGCAGACAGAAGCAGTGTGGGGGAGTGTGAGT
 GCGGTTCTCTCCTTCTGGCTGTGGGCAGAGATGTGCACACGTTTCGATTTCATCATGGCTGCCGGCCCA
 GCCTCCTTCTGCTGTACATGTTTTGGTGGAGCCCAATGCTGCCAGTCTCTCGGAGGCTGTGCAGGCTG
 CATGCATGCTCCGCTACCAGAAGTGTCTGGATGCTCGTCCCAGACCTCCACCTCCTGCCTCCCAGCACC
 CCCTGCGGAGTCAGTTGCGAGACGTGTAGGGTGGACTGTCCGAGGGGTGTTCACTCTGTGGGGTTCC
 CTCAGCCCAACGTCTAGGATCCCAGACCCCA

ACGCGTACGCGGCCGCTCGAGCAGAACTCATCTCAGAAGAGGATCTGGCAGCAAATGATATCCTGGATT
 ACAAGGATGACGACGATAAGGTTTAA

Protein Sequence: >RR213802 representing NM_080478
 Red=Cloning site Green=Tags(s)

MSVPSSLQSAINANSHGGPALSFPFPLHAAHNQLLNAKLQATAVVPKDLRSAMGEGSVPEPGPANAKWL
 KEGQNQLRRAATAHRDQNRNVTLLAEEASQEAETAPLGPGLMHL YSELELSAHNAANRGLHGSALIIIN
 TQGLGPDEGEEKAAGEVEEEDEDEEEDEEEEDLSSPQGLPELENVEVPSGPQVLTGPREHKSASLL
 FGMRNSAASDESSWATLSQGSPSYGSPEDTDSFWNPNAFETDSDLPAGWMRVQDTSPTYWHIPTGTTQ
 WEPPGRASPSQGNSPQEESQLTWTGF AHQEGFEEGEFWKDEPSEEAPMELGLKDPEEGTLPFSAQSLSPE
 PVPQEEENLPQRNANPGIKCF AVRSLGWVEMTEEELAPGRSSVAVNNCIRQLSYHKNLHDPMSGGWGEG
 KDLLLQLEDETLKLVEPQNQTLLHAQPIV SIRVWVGRDSGRERDFAYVARDKLTQMLKCHVFRCEAPAK
 NIATSLHEICSKIMSERRNARCLVNGLSLDHSLKVDVLPFQVEFPAPKNELVQKFQVYYLGNVPVAKPVGV
 DVINGALESVLSSSSREQWTPSHVSVAPATLTI LHQQTEAVLGEICRVRFSLFVAVGRDVHTFAFIMAAGP
 ASFCCMHFWCEPNAASLSEAVQAACMLRYQKCLDARSQTSSTCLPAPPAESVARRVGT VRRGVQSLWGS
 LKPKRLGSQTP

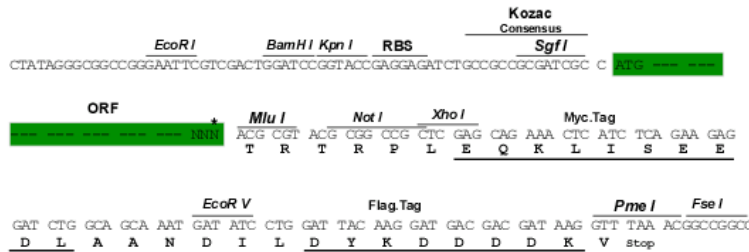
TRTRPLEQKLI SEEDLAANDILDYKDDDDKV

Restriction Sites:

SgfI-MluI

Cloning Scheme:

Cloning sites used for ORF Shuttling:



* The last codon before the Stop codon of the ORF

ACCN: NM_080478

ORF Size: 2133 bp

OTI Disclaimer: The molecular sequence of this clone aligns with the gene accession number as a point of reference only. However, individual transcript sequences of the same gene can differ through naturally occurring variations (e.g. polymorphisms), each with its own valid existence. This clone is substantially in agreement with the reference, but a complete review of all prevailing variants is recommended prior to use. [More info](#)

OTI Annotation: This clone was engineered to express the complete ORF with an expression tag. Expression varies depending on the nature of the gene.

Components: The ORF clone is ion-exchange column purified and shipped in a 2D barcoded Matrix tube containing 10ug of transfection-ready, dried plasmid DNA (reconstitute with 100 ul of water).

Reconstitution Method:

1. Centrifuge at 5,000xg for 5min.
2. Carefully open the tube and add 100ul of sterile water to dissolve the DNA.
3. Close the tube and incubate for 10 minutes at room temperature.
4. Briefly vortex the tube and then do a quick spin (less than 5000xg) to concentrate the liquid at the bottom.
5. Store the suspended plasmid at -20°C. The DNA is stable for at least one year from date of shipping when stored at -20°C.

RefSeq: [NM_080478.1](#), [NP_536726.1](#)

RefSeq Size: 2554 bp

RefSeq ORF: 2136 bp

Locus ID: 29722

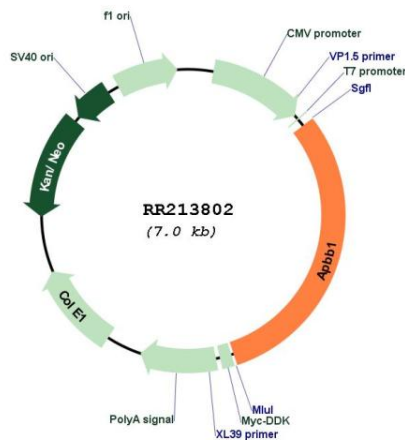
UniProt ID: [P46933](#)

Cytogenetics: 1q32

MW: 77.7 kDa

Gene Summary: displays in vitro binding to the NPTY intracellular domain of the Alzheimers disease associated human beta amyloid precursor protein [RGD, Feb 2006]

Product images:



Circular map for RR213802